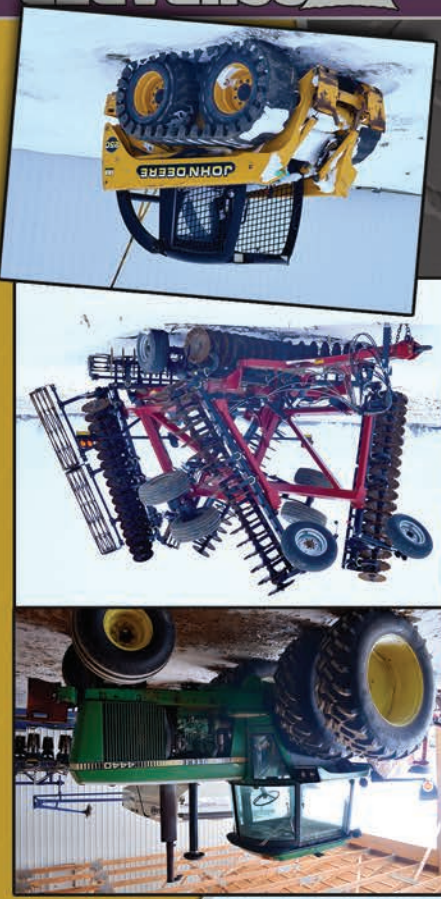


MONDAY, MARCH 30 • 11:00 AM

**SCHIFFER
FARMS, et. al.**
**Surplus Farm & Trucking
EQUIPMENT**
AUCTION

BUCCYRUS, OHIO



BUCYRUS, OHIO



LIVE INTERNET BIDDING
Visit SchraderAuction.com for Details
or call Zach Hiner 260.437.2771

SCHIFER
FARMS, et. al.

Surplus Farm & Trucking EQUIPMENT AUCTION



SchraderAuction.com

Follow us on:

YouTube

Facebook

Twitter


MARCH 2015						
Sun	Mon	Tue	Wed	Thu	Fri	Sat
1	2	3	4	5	6	7
8	9	10	11	12	13	14
15	16	17	18	19	20	21
22	23	24	25	26	27	28
29	30	31				



419-566-1599
wendtk@schraderauction.com

AUCTION MANAGER:
Kevin Wendt, CAI

Columbia City, IN 46725 • 800-451-2709

SCHRADER 
Real Estate and Auction Company, Inc.
80 Box 508, 950 N. 1st St.,
Bozeman, MT 59717-0508

TRACTORS • TILLAGE • PLANTING • TRUCKS • GRAIN TRAILERS
LOWBOY • SKID LOADER • ROGATOR • GRAIN DRYER • & MORE!



SCHRADER
Real Estate and Auction Company, Inc.

MONDAY, MARCH 30 • at 11:00 AM





BUCYRUS, OHIO

SCHIFER FARMS, et. al.

Surplus Farm & Trucking EQUIPMENT AUCTION

MONDAY, MARCH 30 at 11:00 AM

AUCTIONEERS NOTE:

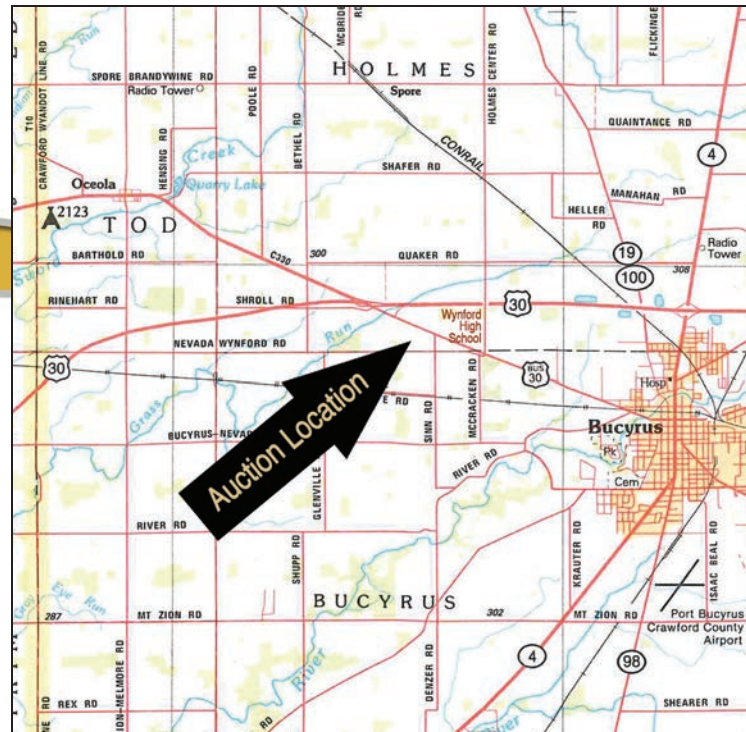
Schifer Farms has increased the scope of their operation and along with a few neighbors will be offering a quality diversified line of equipment. Don't miss this excellent opportunity to buy field and road ready units. **BE ON TIME VERY FEW SMALL ITEMS** this auction will last less than 2 hours. Loading available auction day please bring your trailer. Lunch and Restrooms on site.

Owner: SCHIFER FARMS

EQUIPMENT QUESTIONS CALL DON SCHIFER 419-563-6368



16 Miles North of Marion OH
20 Miles East of Upper Sandusky, OH
60 Miles West of Mansfield, OH
60 Miles North of Columbus, OH



AUCTION LOCATION:
1742 Wynford-Nevada Road, Bucyrus, OH 44820
(Near Wynford School)

DIRECTIONS: From Bucyrus take US 30 Bypass West of Bucyrus 3 miles to CR 330 (Bucyrus/Oceola Exit OLD 30) turn south/southeast on Old Lincoln Way HWY go 1 mile to Sinn Rd turn right south on Sinn Rd 1/4 mile to Wynford-Nevada turn right west 1/4 mile to sale site. From Nevada take Center St 5 miles east to Sale site. Watch for Schrader Signs!



LIVE INTERNET BIDDING
Visit SchraderAuction.com for Details
or call Zach Hiner 800-451-2709

AUCTION MANAGER:
Kevin Wendt, CAI
419-566-1599

SCHRADER
Real Estate and Auction Company, Inc.

800-451-2709 • www.schraderauction.com

Tractors • Rogator Skid Loader • Grain Dryer Scrapper Pan

- **93 JD 8300** Tractor CHA, 1000 pto, 3 pt, new 420x85x30 ftr tires, 20.8 x 42 axel mounted rear dual tires, 4 hd remotes, power shift, good interior, showing 2877 hrs SN# POO1244
- **JD 4440** Tractor CHA, Quad range, 3 remotes, 3pt, PTO, 3040 Original Hours (Sharp) SN# H062420RW
- **Torx 11** Yard pull type scrapper ejector construction pan
- **2006 1274C** Rogator sprayer, 90' booms, 1200 gal SS tank, newer tires, Ag Leader cont, 2nd owner operator
- **JD 250** Skid Loader w/1100 hrs
- **Skid loader** hay fork, material bucket, 7' hyd angle snow plow sold seprate
- **Hay Baler** bale basket
- **Farm Fans 500H** continuous or staged auto flow Grain Dryer
- **Leon 8'** Tractor loader quick tach w/ 7' manure bucket and brackets to fit 20-55 series JD tractors
- **Wagon Load** of miscellaneous Farm & Truck parts monitors and radars

Tillage and Planting

- **Sun Flower 6332** 26' Soil Conditioner w/rear hitch. 1/4 inch blades, Z piece S tine shanks
- **Sun Flower 7231** 28' Roller Harrow
- **CIH 330** 30' Turbo-Till w/ rear hitch new front blades
- **Salford 570** 30' RTS w/ new blades & weight pkg
- **DML 13** shank 28% Coulter bar w/ twin piston John Blue pump and drive wheel
- **DML 730B** Ripper w/rear hitch
- **JD 2700** 5 shank ripper w/ adj disc
- **CIH 2500** pull type 3pt sub soiler
- **CIH 720** 6x18" 3pt plow
- **Great Plains** 30' Grain Drill, 3-section solid stand
- **Clarke** 1000 gal poly tank w/ gear

Dump Trucks • Pickup Grain Trailers • LowBoy Tanker • Livestock Trailer Tires

- **88 IHC 9300** Dump Truck, Cummins 10 spd, lift axel, new tires, 17' Alum dump bed
- **88 Ford L9000** Dump Truck BCIII 400 HP Cummins 8 spd, low hole, air lift 3 axel, hendricksen sep, 17' Alum dump bed
- **01 Ford F-350** Super Duty Western Pkg Pick-up, 7.3 diesel, snow plow, 200,000 miles
- **64 Double Conoco** twin 5300 gal SS Tanker trailer w/ new sub frame (sharp)
- **50 Ton Lowboy** Detach 3 axel trailer (great cond)
- **09 Stoughton** 40x96x66 Ag Hopper Grain Trailer w/ spring ride, steel wheels
- **06 Timple** 40x96x72 grain trailer spring ride, 4 outside alum wheels, 2 rows of 5 lights
- **Moritz** 16' Bumper pull Livestock Trailer
- **Air Ride** Truck seat
- **Misc.** truck Parts
- **(8) 22.5** all bud wheels hub polit
- **(8) 22.5** steel bud wheels hub polit
- **(8) 24.5** LP Drive tires
- **(8) 22.5** LP Drive tires

TERMS & CONDITIONS:
Cash or Check with photo ID. All items sold "AS IS."
Announcements made the day of the auction take precedence over any printed material.
Not responsible for accidents.

