

AUCTION TERMS: CASH, CHECK, MASTERCARD & VISA - 4% Convenience fee on credit cards. All Sales Final! Everything Sold "AS-IS"!



Follow us on:



SCHRADER
Real Estate and Auction Company, Inc.

950 North Liberty Dr., Columbia City, IN 46725
260-244-7606 • 800-451-2709
auctions@schraderauction.com

AUCTION MANAGER: Mark Smithson, 765-744-1846
mark@schraderauction.com
#AC63001504 #AU10100108

JULY 2015						
Sun	Mon	Tue	Wed	Thu	Fri	Sat
			1	2	3	4
5	6	7	8	9	10	11
12	13	14	15	16	17	18
19	20	21	22	23	24	25
26	27	28	29	30	31	



260-244-7606 • 800-451-2709
www.SchraderAuction.com

Gaston, Ind.

COPPERSTONE FARMS

FARM EQUIPMENT
LANDSCAPING TOOLS
ART COLLECTIBLES

SCHRADER
Real Estate and Auction Company, Inc.

AUCTION

THURSDAY, JULY 30 • 4 PM

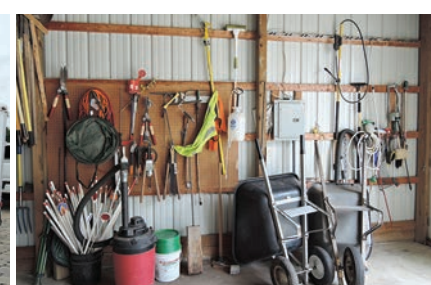
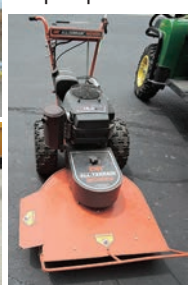
AUCTION THURSDAY, JULY 30 • 4 PM

Gaston, Indiana

LOCATED AT 12701 N. WHEELING AVE., GASTON, IN - Approximately 2 miles north of the intersection of Wheeling Ave. & SR 28. From the NW side of Muncie, travel NW on Wheeling Ave. about 5 miles to Copperstone Farms.

EQUIPMENT:

2013 John Deere 5085M tractor w/ JD H260 loader, FWA, diesel, 345 hrs, shuttle shift, 16.9-32 rears, 11.2-24 fronts, 2 remotes, 540 PTO, front bumper. Like new! • **2013 John Deere 4120** tractor, FWA, diesel, 813 hrs, Power Reverser, front weights, 17.5-24 rears, 10+16.5 fronts, 2 front remotes, 540 PTO. Excellent condition • **2013 John Deere X734** compact tractor, gas, 116 hrs, 4 wheel steer, w/ 60" drive over mower deck. Like new! • **2010 John Deere 825i XUV** 4x4 Gator, 434 hrs, gas, electric dump bed, cab canopy, windshield • **Frontier SB 2176** Snowblower w/ PTO mount High Flow sending unit, 6" width. Snowblower is front mount & sending unit is rear mount. Very nice set-up, excellent condition • **Woods 918** ORD Turf Bat Wing finish mower, 15', wings & rear deck all hydraulic fold. Excellent condition • **2002 Sooner** aluminum 3 horse slant trailer, w/ loading ramp, gooseneck hitch, 7' interior height. Hard to find trailer - excellent condition • **Exmark 72"** commercial mower w/ bagger • **Worksite Pro BL7B** 7' blade, front mount w/ hydraulic pivot & tilt • **Worksite Pro C78** 6½" bucket, front mount • **3 pt. blade, 8' • 4' forklift** w/ forks, for front mount • **Buffalo** turbine blower, 3 pt mount, 540 PTO • **Honda EB 5000** generator, 120/240 watts • **Master 650,000** space heater • **DR All Terrain** walk behind mower, 28" blade, 15 HP Kawasaki engine, electric start, w/ 48" finish mower deck • **Walk behind** mower w/ bad motor • **(2) 45 Gal.** pull behind sprayers, one w/ pump & booms, one without pump/booms



AUCTIONEER'S NOTE: This is an excellent opportunity to purchase well-maintained items in excellent condition. Many of the decorative items are one-of-a-kind. *Don't miss this chance to purchase unique desirables or quality equipment.*

LANDSCAPING & YARD TOOLS:

- **Hay Elevator**, 24', electric
- **Shark** hot water pressure washer, 1500 psi, 1.9 GPM
- **Leaf vacuum** unit, 6 HP, w/ bag & hose
- **7' Cultivator**, 3 pt. mount
- **8' Wheel disc**
- **Speeco** 30" quick hitch
- **4' Lawn roller**



Stihl gas edger, (3) Stihl weed eaters, Stihl 021 chainsaw, (2) Stihl MS 170 chainsaws, Stihl BR550 Shoulder leaf blower, JD hedge trimmers, Echo Power Pruner pole saw, garden hoses, hand sprayers, shears, nippers, tamping packer, shovels, scoop shovels, spades, maddox, clamshell shovels, rakes, landscaping rakes, axes, potato hoes, potato fork, pitchfork, mulch shovel, hand edger, hand hoes, barn scrapers, power hedge trimmers, backpack hand sprayers, extension cords, etc.

HAND TOOLS:

(Many are Craftsman - De-Walt): Framing nailers, power nailers, Rockwell Porta Tool, air staplers, air nailer, brad nailer, jigsaw, sawzall, chop saw, mitre saw, skil saws, drills, drill bits, sander, hand grinder, Craftsman table grinder, air hoses, air wands, sockets, socket sets, threading tools, pliers, wrenches, snips, vice grips, pipe wrenches, crow bars, pry bars, spud bar, impact sockets, impact wrench, hammers, levels, squares, vise, Kennedy tool chest on wheels, Craftsman tool chest on wheels, salamander, ratchet straps, asst. bolts/ screws, small battery chargers, binders, bolt cutters, hydraulic floor jack, gas cans, lug wrenches, jack stands, Reese hitch insert, chains, 20' fiberglass ext. ladder, 10' fiberglass stepladder, (2) 8' fiberglass stepladders, wheelbarrows, hydraulic cylinder, shop vac, measuring wheel, work belts, assorted field tile, etc.

HOUSEHOLD & DESIRABLES:



Pinball machine • tanning bed • treadmill • exercise bike • Craft-matic twin beds • bunk beds • bed frames • head board • table • coffee table • chest of drawers • Wicker rocker & sofa table • 28" Vizio TV • (2) bar stools • Oriental standing screen • (2) matching leather living room chairs • recliner • baby bed • Singer sewing machine (like new) • Christmas decorations • Trotter 545 treadmill • SunQuest Pro 24 XL tanning bed • Williams "Tales of the Arabian Nights" pinball machine • several smaller household items • vacuum • VCR's • books • shelving units • glassware • plates • rugs • oriental rugs • artwork • wall hangings • canvas paintings • decorative items • misc. lawn furniture • assorted home furnishings & more.



SELLER: LARRY AND CYNDEE STONE

Auction Manager:
Mark Smithson,
765-744-1846

SCHRADER
Real Estate and Auction Company, Inc.

260-244-7606 • 800-451-2709
www.SchraderAuction.com