

MARCH 2016						
Sun	Mon	Tue	Wed	Thu	Fri	Sat
			1	2	3	4
6	7	8	9	10	11	12
13	14	15	16	17	18	19
20	21	22	23	24	25	26
27	28	29	30	31		



TERMS & CONDITIONS:
Cash or Check with proper ID.
Announcements made the day of the
auction take precedence over any printed
material. Not responsible for accidents.

www.SchraderAuction.com

- Tractors • Backhoe • Combine
- Heads • Grain Cart • Wagons
- Semi Tractor • Hopper Bottom
- Kinze Planter • Grain Drills
- Sprayers • Tillage equipment
- Hay Equipment • Augers

and more!

No Small Items
Please Be Prompt
Online Bidding
Available

SCHRADER
Real Estate and Auction Company, Inc.



WIDENER FARM EQUIPMENT AUCTION

THURSDAY MARCH 3, @ 11:00 AM

Held at the Miami County Fairgrounds • 650 N CR 25A Troy, OH

Follow us on:

YouTube f B

Get our new iOS App

WIDENER FARM EQUIPMENT AUCTION

THURSDAY MARCH 3 @ 11:00 AM

WIDENER FARM EQUIPMENT AUCTION

THURSDAY MARCH 3
@ 11:00 AM

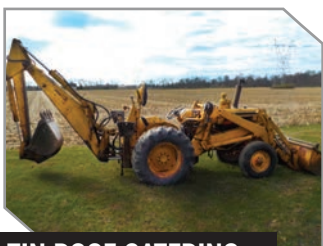
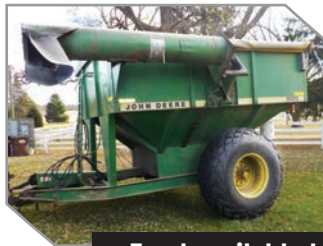
Auctioneer's Note:

After a successful career in farming, Mr. Widener is retiring and offering his full-line of equipment! Moved to the Miami County Fairgrounds for your convenience

AUCTION LOCATION:

650 N CR 25A Troy, OH

Directions: From I-75 North of DAYTON, OH take exit 74 east on to SR 41 (W. Main St.) travel southeast 1 mile to N. ELM St. turn left or north ½ mile to fairgrounds. **No Small Items - PLEASE BE ON TIME!**



**Food available by TIN ROOF CATERING
Loader Tractor available the day of sale!**



INSPECTION DATE: TUESDAY MARCH 1ST FROM 10AM - 2 PM AT THE FAIRGROUNDS. EQUIPMENT QUESTIONS OR EARLY VIEWING, CALL RON WIDENER AT 937-823-9663.

OWNERS: RON & SHARON WIDENER

AUCTION MANAGER:
Andy Walther - 765-969-0401

800-451-2709
www.SchraderAuction.com

TRACTORS - BACKHOE

- **1990 JD 4555 Tractor, MFWD, 155hp, CAH, Powershift 15F/4R Transmission, 18.4 x 42 rears w/duals, 14.9 x 30 fronts, Triple remotes SCV, Cat III 3-point hitch, 1000 RPM PTO, Radar, rear wheel weights, 10 front weights, 5,802 Hrs., SN# RW4555P005297**
- **1975 JD 4430 Tractor, CAH, w/only 800 hours on complete overhaul and 7,650 total hours, New Clutch, cam shaft and oil pump, 18.4 x 38 rears w/duals, 2 remotes, Quad Range Trans., 540/1000 RPM PTO, rear wheel weights, 5 front weights, SN# 4430R-034568R**
- **1966 CASE 530 BACKHOE, diesel, SN# 8289701.**

COMBINE - HEADS - GRAIN CART - WAGONS

- **1998 JOHN DEERE 9510 Maximizer COMBINE, GreenStar ready, Contour master, J&M hopper extension, Twin chaff spreader, 23" front rubber, 14.9-24 rears, 3994E/2871S hours, SN# 676677, Yearly maintenance and multi-point inspections completed at Koenig Equipment (Urbana) Shop after each harvest, field ready! NOTE: Service Records available through Koenig on Combine!**
- **1998 JD 693 Corn Head, poly snouts, SN# 676217**
- **(6) LANKOTA Stalk Stompers**
- **1997 JD 920 grain platform, flex-contour, poly reel fingers**
- **20ft. header Cart**
- **JOHN DEERE 500 Grain Cart, 23.1x26 tires, with roll tarp**
- **(2) KILLBROS Mod. 350 gravity wagons with P&H gears, side discharge**
- **J&M 300 Bu. Gravity wagon w/J&M gear, side discharge**
- **Unverferth-McCurdy Mod. 275 Bu. Gravity wagon, side discharge.**



SEMI TRACTOR - HOPPER BOTTOM

- **2001 FREIGHTLINER D112 SEMI TRACTOR, Day Cab, CAT C-12 engine, 410 Hp, 601K miles, Eaton Fuller transmission RX-14710B, Air ride seat, nice**
- **1997 TIMPTE Hopper Bottom, 40ft, with aluminum wheels, Shure-lok tarp.**

KINZE PLANTER - GRAIN DRILLS - SPRAYERS

- **KINZIE 3600 12/24 Planter, Liquid Fertilizer, Insecticide units, Less than 1000 acres on re-conditioned corn units, (12) new bean pusher units with only 700 acres, SN# 615458, John Blue Pump, Excellent, w/monitor**
- **1998 JOHN DEERE 750 DRILL, 15 ft., Monitor, markers, SI seed unit upgrades, Down pressure on both gangs**
- **JOHN DEERE / Van Brunt 13 hole grain drill**
- **GREAT PLAINS S1000 Sprayer, 60ft booms, GPS Raven Monitor, foam markers, 1000 gallon tank, wash tank**
- **ATV Pull-type sprayer w/ Briggs and Stratton Motor, 30' booms, tandem axle, 250 gallon tank.**

TILLAGE EQUIPMENT

- **KRAUSE 2860 7-shank Disk Chisel w/ harrow**
- **KRAUSE 14' DISK**
- **JD 1010 Field Cultivator 24' with Sunflower 5 bar harrow**
- **JD Field Cultivator, 12', 3pt.**
- **14' pull-type harrow**
- **White 544 Auto-reset plow, 4 bottom, plus 1 extra bottom.**

HAY EQUIPMENT - AUGERS - MISC.

- **NEW HOLLAND 488 Haybine**
- **NH 273 Hayliner square baler**
- **TOP-AIR Seed conveyor, hydraulic belt auger, 20ft, transport wheels**
- **WESTFIELD incline semi-unloading auger w/electric motor**
- **60ft. Kewanee Transport auger**
- **18ft. Hutchinson Load-out auger**
- **1000 gallon poly water tank**
- **Flat rack haywagon w/heavy duty gear**
- **Tandem axle flatbed wagon 8'x 10'.**



Online Bidding Available!

SCHRADER
Real Estate and Auction Company, Inc.