



AUCTION *Tates*

WEDNESDAY, JUNE 22 • 6 PM

AUCTION LOCATION: 18414 Scipio Road, Spencerville, IN. Directions: Take 101 north off of St. Rd. 37, go 1-1/2 miles to Scipio Road, turn left to property.



TRACT 1: 15 Acres w/immaculate 3,800 sq. ft. custom built home! Home features master BR suite on main level w/ jet tub, 2 shower head shower, separate vanities, & lots of closet space. There are 2 large BRs on lower level, each w/ a bathroom. Kitchen features custom made cabinets by County Mill, a center island w/ cabinets, lots of extra cabinet storage, & a corner window over the sink for great view out over the back pond. The Great room off of the kitchen features a walk-out onto the huge upper level deck overlooking the back pond area! A bonus room for dining or recreation has a wall of windows overlooking the back pond area! There is a room for a den or study w/ double pocket doors. The utility room is huge w/ 1/2 bath, lots of cabinets &

counter space. There is a large open loft above the kitchen & great room area — perfect for a study, hobby or rec area. The lower level offers a large family room w/ gas fireplace. There is a bricked area w/ drain & surrounded by windows (perfect for a hot tub), & a walk-out covered patio off of the back. There is also a room plumbed & wired for kitchen, & a large storage area in the lower level. The 2 car garage has a complete floored attic w/ stairs. **The first building is 36x80'** w/ all concrete, 4 overhead doors, gas heat, & includes an apartment w/ full bath & office w/ counter + a conference room area & full bath. There is full length loft area for storage. **The livestock building is 48x64'** w/ 3 box stalls, tack room, cattle pens, a heated office, water & electric. There is full hay storage overhead on 2 sides, a turn-out area in the front of the building, & a 90 x 90 riding arena off of the back. **The storage building is 30x40' + a 20x40' heated lean-to.** Both sides are concrete w/ electric & 14' overhead door. There is a dog run off of the back plus stall area.

There is a 40x56' livestock or storage barn w/ a front 14' sliding door. **There is a 20x48' shed for implement storage w/ concrete floor.** **The pond is over 1+ acre & nearly 16' deep.** It is stocked w/ fish & has a covered pavilion w/ newly poured concrete. In front of the pavilion is a sand beach.

TRACT 2: 6.5 Acre scenic site, perfect for an estate building site! It is currently planted in alfalfa. It has over 400' of road frontage, rises up from the road for a very elevated building site, & backs up to a very private woods area. There is an old small pond on the north end of the tract.



TRACT 3: 2 Acre parcel. This includes a 2 story home which will need complete restoration or demolition. The Tract offers a possible 2 acre building site w/ nearly 280' of road frontage, & runs back over 350'. It too rises up toward the back for a potential elevated building site.

OWNER:
Joseph A. Schaeffer Revocable Trust
AUCTIONEER: JERRY EHLE
SCHRADER
REAL ESTATE & AUCTION
of Fort Wayne, LLC
260-749-0445 • 866-340-0445
www.SchraderFortWayne.com
www.SchraderAuction.com

Inspection Dates:
Sunday, May 22
2-4PM &
Wed., June 1,
5-7PM



MORE PHOTOS ONLINE: www.SchraderAuction.com and www.SchraderFortWayne.com

SATURDAY, JUNE 25 • 9 AM

HORSE TRAILER: 2004 Sundowner 38' Sierra SW series horse trailer, model 8014, 3 horse, 5th wheel, 14' camping-dressing area, fully kitchen & bath, sleeps 6, w/ Onon generator 493 hrs., hay rack, **CLASSIC AUTOMOBILE:** 1985 Pontiac Grand Prix, 350 V-6, fully loaded, 7600 original mi., excellent condition

TRACTORS, MOWERS, & RANGER: 2013 Kubota L5740 utility tractor w/ cab & LA 854 loader & quick connect bucket, 128 hrs, industrial tires, serial#73456 • 2013 Polaris Ranger 4x4, 800 HO, 276 mi., dump bed, like new condition • 2013 Kubota diesel, ZD 326S zero turn mower, 60", 26 HP, only 335 hrs • 1966 John Deere 110 riding mower, fully restored, 38" deck • 1950 Farmall M, runs good, original paint good rubber, ser. # FBK225417, duals

EQUIPMENT & ATTACHMENTS (all bought new in 2013): 48" pallet forks for Kubota tractor or Bobcat, PF 4048 S • King Kutter 72" professional rotary mower • JD Woods 7200 rotary finish mower • King Kutter 6' grader box w/ adj. teeth, 6 shank • 3 point platform • 42" Agri-Fab lawn sweeper • 4' garden trailer • Husqvarna 55R21 mulching-bagger pusher mower w/ Honda eng. • Mantis cultivator-tiller • Troy Bilt 2600 psi power washer

TOOLS & MISC: Echo 660 EVL 20" chain saw • Wagner airless paint sprayer • Coleman 3.5 HP 30 gal air compressor • Reese hitches & accessories • lawn & garden tools • halogen work light • RV waste tank on wheels • 75 sq. ft. hickory flooring • wood hobby workbench w/ drafting light • saw horses • battery charger • 1.5 amp battery warmers • 3.5T floor jack • 100K BTU salamander heater • hose reel on cart

HORSE & LIVESTOCK ITEMS: (5) 16' & (2) 12' pipe panels • 100 gal rubber trough • 30 gal rubber trough • many small feeders & buckets • (2) poly wheelbarrows • square hay feeder • large selection of bits, bridles, horse tack • Dura Tech nylon saddle bags, insulated, waterproof • Classic equine "Play to Win" saddle pads, 30x32 & 32x31 • several saddle pads & blankets • rolls of barby wire • Billy Cook 16.5" tooled leather western saddle • 11.5" black kid's western saddle • saddle stands • large collection of horse, cowboy, western decorators • large cow hide

FURNITURE: Barnwood rustic bar built by Jak-wood Furniture, 4' x 6' • pair of metal & leather western bar stools • pair of tractor seat metal bar stools from Grabbill, IN • large country pine china hutch • corner armoire w/ cowhide doors • futon daybed • 3-sec. office unit, mahogany color • (2) leather office chairs • log entry bench & matching coat hook

ANTIQUE FURNITURE: 4' counter display from Dr. Parker's, Woodburn • primitive harvest table • foreman's desk w/ 30 drawers painted green • glass door wall display cabinet • jewelers work desk • walnut wardrobe w/ burled doors • cast iron based café table from Stevens Toledo OH w/ 5 bentwood chairs • green beadboard cupboard • 30's breakfast

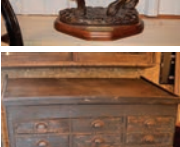
set w/ enameled top • small butcher block

ANTIQUES & COLLECTIBLES: Cutter sleigh painted red • John Deere 4'x 6' wagon or cart w/ seats for 4 • John Deere mower sully • Elgin National coffee grinder w/ 28" wheels • Hobart dbl. head elec. commercial coffee grinder, model 2727 • Harley Davidson 3-wheeled pedal motorcycle • Railroad luggage wagon, all original • reproduction model T pedal car • plastic Mobil Pegasus wall sign • BF Goodrich sign • Michelin sign • lighted Goodrich-Michelin hanging sign • Cooper Tire sign • Richelieu tin litho coffee box • tin litho 5 pc. train • Aerial cast iron stove • cast iron cannon, fires • cutter sleigh, painted red • Chein wind up tin litho ferris wheel • Sealtest Ice cream sidewalk sign • Maxwell House coffee adv. cart • Royal Crown Cola thermometer • Pepsi thermometer • Bulldog Won't Bite tobacco sign • Tonka & Tru Scale trucks & farm toys • wall mount coffee grinders • John Deere 1847 wall pocket • V&K restored water pump • counter cigar humidior marked "Freihofers" • 1950's General Electric retro refrigerator excellent cond. • Aerial cast iron stove • Richelieu Coffee tin litho box • Punch 5 cent cigar clown bank • cast alum. buffalo doorstop • collection of coffee grinders & mills, all varieties & sizes • vintage scooter all original • Western Flyer tricycle • early Firestone boat motor • 14" Royal cook stove w/ accessories • kitchen primitives, cherry pitter, grinders & more • Harley Davidson framed advertisements • (2) transit scopes • deco desk lamp & Bakelite telephone • graniteware bucket & pale • Dino Oil, Ford Mustang & other reproduction signs • many metal adv. trays • yarn winder spinning wheel

SCALES: Watling fortune teller penny coin op platform scale • Dayton #30 style 144 computing scale, adj. mirror • Toledo white 3 lb. candy scale • Eastlake marble apothecary scale w/ brass trays • Buffalo barn scale, restored • Triner #8 postal scale • Jacobs #20 Detectoware by Brooklyn Bros. • Anglidle #20 style E computing scale • Christian Becker scientific scale • early cast scales of justice • Richardson 10 & 30lb chrome weights • USS 50lb weight • large Howe double post barn scale • Indiana Standard pit less wood cased scale • also 20 more asst. postal, candy, store & scientific scales ... too many to list

GUNS: 22 long hand gun from Tanfoglio, Italy, model TA, w/ leather holster • Colt auto 22 LR hand gun, Challenger • Universal 12 ga. double barrel shotgun, non-firing • Marlin model 99 22LR rifle w/ Apache 23x18x44 scope

MISC.: Maytag washer & elec. dryer, Centennial Commercial models • White refrigerator • porch glider on frame • park bench • Lodge cast iron skillets & camping gear • household decorator items • several wildlife prints & wall pictures • large collection of Western & Cowboy items, decorators, pictures, figurines, stirrups, lamps & more • 2 Breyer horses in boxes • asst. dishware & cookware • lawn chairs



MORE PHOTOS ONLINE: www.SchraderAuction.com and www.SchraderFortWayne.com