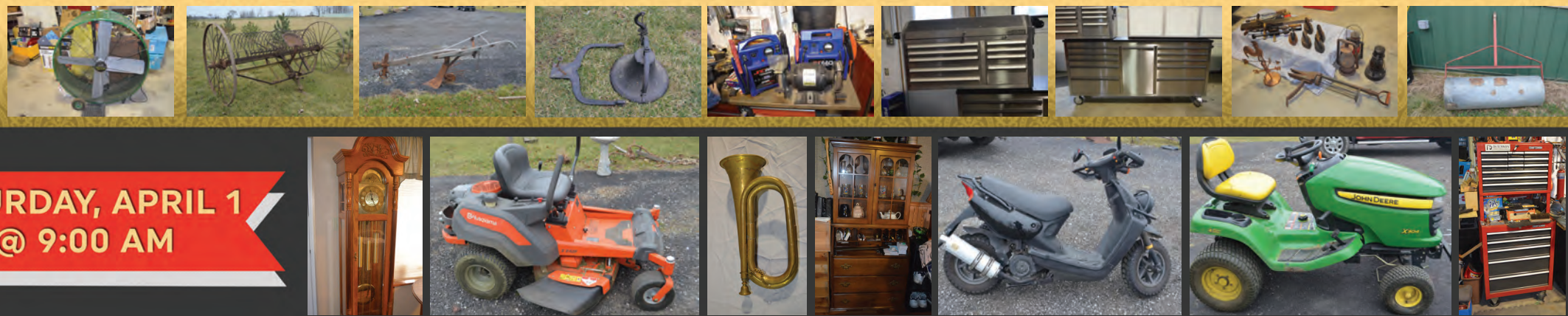


2 Rings All Day!

HUNTINGTON, INDIANA
PERSONAL PROPERTY
& ANTIQUE FARM EQUIPMENT
AUCTION
Henry Hoting Estate

**SATURDAY, APRIL 1
@ 9:00 AM**



AUCTION LOCATION: 593 E. 1200 NORTH, HUNTINGTON, IN
2 RINGS ALL DAY

- FARMALL TRACTORS & PARTS • SHOP TOOLS
- POWER TOOLS • LAWN & GARDEN TOOLS
- MOTOR CYCLES • GOLF CART
- LAWN MOWERS • ANTIQUES & COLLECTIBLES
- HUGE BRASS COLLECTION • FURNITURE & HOUSEHOLD

FARMALL TRACTOR COLLECTION

- Farmall H ser# 267822 with Horn Hydraulic loader, single hydraulic, PTO, rear wheel weights
- Farmall H 1940 ser# 46815 with loader, good paint, new front tires, good rear rubber
- Farmall C 1949 ser#35908 with good rubber
- Farmall C 1948 ser#5507 with good rubber
- Farmall Super C 1952 ser#174070 with good rubber
- Farmall C 1951 ser#190857 with double rear wheel weights, belt pulley, hydraulic lift draw bar
- Farmall Super C 1952 ser#143624 with belt pulley, good rubber
- Farmall C 1951 ser#105817,
- Farmall B ser#209538 FULLY RESTORED, new paint, rubber, battery, belts and hoses
- Farmall B wide front ser#337605, new rear tires, rear wheel weights
- Farmall M 1949 ser#203078 XL rough for parts only, non-running
- Farmall Assorted wheel weights, extra motor, large quantity parts, additional loader



IH FARM EQUIPMENT: 2 bottom plow • 2 row cultivator • 5' disc, 6' blade sickle bar mower • 3 point boom

LAWN AND GARDEN: Club Car gas golf cart with windshield and canopy, ser#AG9247311238, custom rims, blue • Husqvarna zero turn mower, Z242F, 42", 23 HP, • John Deere X304 Lawn Tractor, 4 wheel steering, 42" cut, 446 hours • Troy Built Pony rear tine tiller • (2) front tine tillers • Toro 6.5 HP self-propelled push mower • Snapper push mower • Craftsman 6.75 HP pressure washer • Toro S-200 snow blower • 100'S OF GARDEN TOOLS: pull garden sprayer • dozens of gas cans • wheel barrels • trailers made from pick up beds

ANTIQUE AND PRIMITIVE EQUIPMENT: McCormick Deering no#7 horse drawn sickle bar mower • IH pull type 2 bottom plow • wood wagon with wood spoked wheels and 2 good seats • wood wagon with spoked rubber wheels • horse drawn dump rake • New Idea R111 side rake • 6' 3 point cultivator • belt drive buzz saw • 14' flat wagon

PRIMITIVES: 7 garden cultivators • 5 walk behind plows • milk cans • wood barrels • several sad irons • hand planters • Yankee screwdrivers • breast drills • runner sleds • Kellogg oak wall phone • wood spoke wagon wheels • windmill blades • windmill pump handle • horse collars • horse hanes • double and single trees • cutter sleigh parts and hitches • barn lanterns • vintage Coleman lanterns • several pitcher pumps • floor model corn sheller • block planes • grain



scale • wood spoke wagon wheels • pair of horse head horse ties • 4 Vintage Pedal Tractors-IH row crop with trailer, Minneapolis Moline wide front, Farmall Super M, Farmall single front tire.

ANTIQUES: First National Bank Huntington wall clock • 1918 US military bayonet in sheath • IH belt buckle • Illinois Central RR lantern with marked globe • walnut ornate wall clock • oak drop leaf table and 2 chairs • Caswell Runyan cedar chest • Little Wizard RR lantern • dinner bell • crock jugs • (2) rocking chairs

TOOLS AND SHOP EQUIPMENT: Like New Stainless Steel Kobalt 9 drawer tool box with 11 drawer Montezuma base • Snap On rolling cabinet base • Craftsman 2 piece rolling tool chest • several rolling tool chests • Kennedy 2 drawer tool box • (2) Milwaukee saw saws • dozens of hand power tools • 1000's of hand tools, sockets and wrenches • (2) jumper boxes • New Craftsman rubber handled vise grips • many New Craftsman screwdrivers • swivel bench vise with pipe clamp • 25+ pipe & Crescent wrenches • 2.5T floor jack • many shop cabinets, drawered units and shelving • Dremel tool in case • 150,000BTU heater • (3) portable air compressors • many step ladders, extension ladders, all sizes • dozens of drop cords • heavy duty 30 amp RV extension cord • shop vacs • Hi Lift jack • 36" livestock fan • Powermate 5000 generator • Craftsman 10" radial arm saw • many bar and C clamps • Ryobi drill

press • Craftsman wood lathe • large quantity of hardware, shop supplies and garage miscellaneous • Craftsman bench grinder • air hose on reel • ball hitch dolly

MISCELLANEOUS: 8 buckets of new driveway sealer • 6 panel oak door • many oak door slabs • (75) sheets of 1/2" foil back sheeting • (2) moped scooters • new in box 12 x 20 x 8 garage in a box • compost barrel • Kenmore gas grill • lawn and garden blocks and bricks • metal windmill • picnic table • his and hers mountain bikes • ball hitch dolly • aluminum bed for ATV • aluminum ramps • nylon straps • ratchet ties • saw horses • 100's square feet of new anti-fatigue mats • Eagle BB gun

FURNITURE & HOUSEHOLD: 50" flat screen TV • Ridgeway grandfather clock • power lift recliner • oval table and 6 chairs • dressers and chests • sofa • leather platform rocker and ottoman • drop front secretary • (2) Eden pure heaters • small kitchen appliances & Food Saver • assorted patio and outdoor furniture • swivel office chair • 100's of brass decorators and trinkets • bookcases • bedding • wall pictures • storage bench • kitchenware • Disney tumblers • Bissell vacuum and carpet machine • SS coffee pot and toaster oven • (2) robotic vacuums • aluminum roasting pan • many wood wine boxes



**SELLER: HENRY HOTING ESTATE
AUCTION MANAGER: JERRY EHLE**

260-749-0445 866-340-0445

www.SchraderAuction.com • www.SchraderFortWayne.com

SCHRADER
REAL ESTATE AND AUCTION
of Fort Wayne