

ABSOLUTE AUCTION • JIM ZEEB'S RETIREMENT FARM EQUIPMENT AUCTION

GREENVILLE, IL | THURSDAY, NOVEMBER 29 • 10AM CST
INSPECTION DATE: NOVEMBER 28, 2018 • NOON-5PM



LIVE INTERNET BIDDING
Visit SchraderAuction.com for
Details or call 800-451-2709

FOLLOW US ON:

GET OUR IOS APP



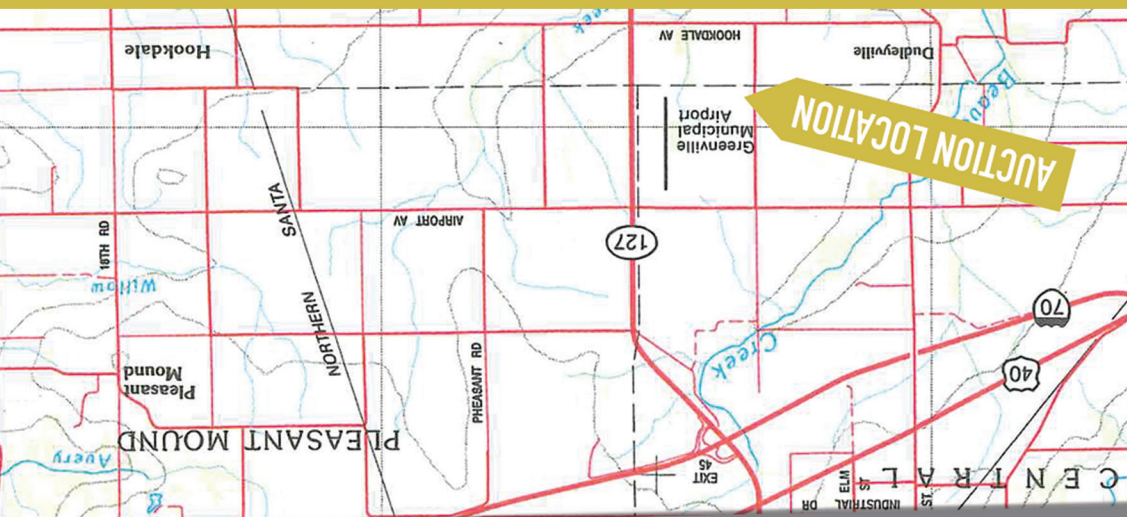
Sale Managers:
Roger Diehm • 260-318-2770
Robert Wishler • 260-336-9750

NOVEMBER 2018						
Sun	Mon	Tue	Wed	Thu	Fri	Sat
		1	2	3	4	5
6	7	8	9	10	11	12
13	14	15	16	17	18	19
20	21	22	23	24	25	26
27	28	29	30			

SCHRADER
Real Estate and Auction Company, Inc.
Corporate Headquarters:
950 N Liberty Drive, Columbia City, IN 46725
800-451-2709 • www.SchraderAuction.com

ABSOLUTE AUCTION • JIM ZEEB'S RETIREMENT FARM EQUIPMENT AUCTION

GREENVILLE, IL | THURSDAY, NOVEMBER 29 • 10AM CST
LIVE INTERNET BIDDING
Visit SchraderAuction.com for
Details or call 800-451-2709



DIRECTIONS: From the intersection of 70 & Hwy 127 go south on Hwy 127 approx. 2.2 miles to Airport Ave., turn west and proceed to Buchmiller Rd (approx. 1 mile). Turn South on Buchmiller Rd, go approx. 3/4 mile on Buchmiller Rd to Auction Site. Look for signs!



ABSOLUTE AUCTION • JIM ZEEB'S RETIREMENT FARM EQUIPMENT AUCTION

GREENVILLE, IL | THURSDAY, NOVEMBER 29 • 10AM CST



LATE MODEL
LOW HOUR
ONE OWNER

Jim Zeeb has had a successful farming career utilizing 20" row farming practices.

- TRACTORS • HARVEST • TILLAGE • PLANTING
- AUGERS • TECH • MISC. FARM RELATED



SCHRADER
Real Estate and Auction Company, Inc.

LIVE INTERNET BIDDING
Visit SchraderAuction.com for
Details or call 800-451-2709

800-451-2709
www.SchraderAuction.com

ABSOLUTE AUCTION • JIM ZEEB'S RETIREMENT FARM EQUIPMENT AUCTION



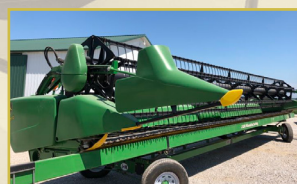
LIVE INTERNET BIDDING
Visit SchraderAuction.com for
Details or call 800-451-2709



GREENVILLE, IL | THURSDAY, NOVEMBER 29 • 10:00AM CST • INSPECTION: NOVEMBER 28, 2018 • NOON-5PM CST

AUCTIONEER'S NOTE: After a very successful farming career, Jim Zeeb is retiring from farming and offering this late model, low houred, and one owner line of very nice farm equipment, at Absolute Auction. Don't be late for this auction! Food service on auction day will be provided by Greenville FFA.

LOAD OUT: Day of auction until 5PM • Friday, November 30 until 5PM • All items to be removed from auction site no later than December 29, 2018.



For this auction, aggregate purchases of \$100,000.00 or more must be paid by wire transfer prior to removal of equipment. Please see terms and conditions.



TRACTORS

- **2013 John Deere 8335R**, SN#1RW8335RAD028662, 843 hrs, power shift, ILS front axle, rear tires 480/80R/50, w/ duals, weights inner & outer, front tires 380/80R/38 w/ duals, 8 front weights, 4 remotes
- **2012 John Deere 8310R**, SN#1RW8310RCC8065014, 1,197 hrs, power shift, 1500 front axle, rear tires 480.80R/50, w/ duals, front tires 420/85R/34 w/ duals, rear weights inner & outer, front weights 6 suite case, 4 remotes
- **2012 John Deere 6190R** w/ H 380 loader, SN#1RW6190RTCA002889, 2,443 hrs, 18.4R-46 Firestone rear tires w/duals, 16.9R30 Firestone front tires, rear wheel weights, power shift, 3 remotes

HARVEST

- **2016 John Deere S670 Combine**, ONLY 610 eng. hrs, and 420 sep. hrs., SN#1H056705A60785702, extended auger, front 520/85 R 42 w/ duals, rear 600/70 R 28
- **2014 John Deere 612C 20"**, SN#1H00612CJEX765685, single ft, poly
- **2013 John Deere 635FD Hydra Flex**, draper, 35' SN#1H0635FDHD0765102
- **J&M 4WS15 head cart**, all wheel steer, 42'
- **J&M HT8 head cart**
- **J&M model 1010-20 Xtenda reach digi-star scales**, SN#1502336, 20" unload auger, hydraulic spout
- **1997 IH 4900 twin screw grain truck**, DT466E, 9 spd., power divider, air brakes, air ride seat, 19' Alum. bed, 60" sides, 3 section cargo doors w/grain door, 11R-22.5 tires
- **1992 IH 8100 twin screw grain truck**, L10 Cummins, 9 spd., power divider, air brakes, air ride seat, AC, 20' Alum. bed, 60" sides, 3 section cargo doors w/grain door, 205/75R 22.5 tires, shows 195k mi.
- **Brent 774 wagon**, brakes, tarp, Super-Singles

TILLAGE

- **DMI 7 shank ripper**, model 2500, SN#JFH0023909
- **Unverferth Zone Builder 7 shank ripper**, SN#A43680412
- **2013 John Deere 2620 disc 33'7"**, SN#1N0260XKD0755174, rock flex, hyd. down pressure, rolling harrow
- **2014 John Deere 2210 35' AU Depth field cultivator** w/ rear hitch, SN#1N02210XKE0755697, hyd., s-bar spike harrow, all new knock on shovels, (Brown box for non-JD equipment to run)
- **John Deere 200 Rolling basket 37'**
- **Hiniker 7700 30' rotary hoe**

AUGERS

- **(Never Used) Westfield MKX 130-74** w/ swing away, SN#286599
- **Westfield MKX 130-84** w/ swing auger, SN#256121
- **Westfield 2017 WR 100-31 SD**, SN#285865

- **Westfield 2014 RW 100-31**, SN#261059
- **Westfield RW 100-31**, SN#232514
- **Speed King Belt Veyor**, 12"x42' belt conveyor, 540 pto drive

PLANTING

- **2012 John Deere 1790 planter**, SN#1A01790DCCE750159, 24 row 20", mechanical drive
- **J&M seed tender cart**, 375 st., 2 compartments, scales, tri-axle, Honda motor, electric start, remote control seed deliver & roll tarp

TECHNOLOGY

- **(1) 2630 display** w/Autotrac SF1
- **(1) 2630 display** w/Autotrac SF1 & section control
- **(1) 2600 display** w/Autotrac SF1
- **(4) StarFire 3000 receivers** w/SF1

MISC. FARM RELATED

- **2012 Thunder Creek fuel trailer**, 750 gallon, 2012, 6.5 hp electrical start
- **BushHog GHM909** 3 pt 9' disc mower
- **Ferguson PTO ditcher**, 1000 pto
- **Super-Single spare tire**
- **Hawkins Down Corn Reel**
- **Sukup bin fans**
- **Fair MFG double fan snow blower**, 8', hyd. angle chutes
- **Pallet forks**, Global 1 hook up
- **(1) 4,000 gal. single wall fuel tank** w/pump & filter
- **(2) 2,500 gal. single wall fuel tank** w/pump & filter
- **(2) 1,000 gal. LP tank**
- **(1) 300 gal. fuel tank** on stand
- **Polaris Sportsman 500**, 4x4, snowplow, wind jammer, 2067 mi.
- **(2) 14.9 R46 rims & Firestone tires**, 10 bolt
- **(1) Michelin 455/55R 22.5** super-single & rim
- **(3) Gustafson TST liquid 12v** seed treatment pump/applicator (1 has not been used)
- **8000 Watt generator**, 13 hp motor, electric start
- **14' Tandem axle trailer** w/2' beaver tail & ramps

AUCTION TERMS & CONDITIONS:

Payment of the Purchase Price must be received by Seller or Auction Company prior to removal of the Purchased Items from the auction site. Except as otherwise provided below, payment may be made by certified, cashier's or personal check (drawn on a US financial institution) or credit card. If payment is made by check, Seller reserves the right to confirm available funds with Buyer's bank, prior to releasing the Purchased Items. If payment is made using a credit card account, Buyer shall pay a 4% surcharge in addition to the Purchase Price. Any payment may be made by wire transfer to: First Collinsville Bank (Bank/Routing # 081025198); For Credit to Weinheimer Law Firm P.C., Reference: Agri-Dynamics, Inc. Auction. **IF THE PURCHASE PRICE IS \$100,000 OR MORE, PAYMENT MUST BE MADE BY WIRE TRANSFER TO THE ACCOUNT DESCRIBED ABOVE.** In the event Buyer fails to make final payment as required by these Sale Terms, or fails to remove the Purchased Items within a 30-day period, Buyer agrees that Buyer will: (1) lose all right, title and interest which Buyer might otherwise have acquired in and to the Purchased Items; and (2) reimburse Seller for all costs, including reasonable attorney's fees and other costs of collection, arising out of Buyer's failure to perform. In addition to any remedies set forth in these Sale Terms, Seller shall be entitled to any and all remedies otherwise available to it under applicable law and not precluded by these Sale Terms. Remedies available to Seller shall be considered cumulative. Announcements made the day of the auction take precedence over any printed material. Not responsible for accidents.

Owner: Jim Zeeb | Sale Managers: Roger Diehm • Robert Mishler

800-451-2709 • www.SchraderAuction.com

SCHRADER
Real Estate and Auction Company, Inc.