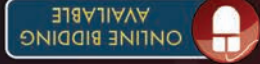


800-451-2709 SchradersAuction.com



SCHRADER
Real Estate and Auction Company, Inc.

MONDAY **MARCH 4TH @ 10AM**
20128 BROWNSVILLE ST., CASSOPOLIS, MICHIGAN



- TRACTORS & FARM RELATED ITEMS
- PLANTING, TILLAGE, AND CROP CARE
- HARVEST EQUIPMENT

CASS COUNTY • CASSOPOLIS, MICHIGAN
FARM EQUIPMENT

AUCTION



CASS COUNTY • CASSOPOLIS, MICHIGAN
FARM EQUIPMENT
AUCTION

- TRACTORS & FARM RELATED ITEMS
- PLANTING, TILLAGE, AND CROP CARE
- HARVEST EQUIPMENT



www.SchradersAuction.com

TERMS & CONDITIONS:
Cash or Check with ID. Announcements made the day of the auction take precedence over any printed material. Not responsible for accidents. Food Available.



Follow us on:

31									
24	25	26	27	28	29	30			
17	18	19	20	21	22	23			
10	11	12	13	14	15	16			
3	4	5	6	7	8	9			
2	1								
Sun	Mon	Tue	Wed	Thu	Fri	Sat			

MARCH 2019

#6505397356, #AU10800060
Ed Boyer: 574-215-7653
Ted Boyer: 574-215-8100
260-244-7606 • 800-451-2709
Columbia City, IN 46725
P.O. Box 508, 950 N. Liberty Drive



SCHRADER
Real Estate and Auction Company, Inc.

CASS COUNTY • CASSOPOLIS, MICHIGAN
AUCTION
FARM EQUIPMENT
MONDAY **MARCH 4TH @ 10AM**

MONDAY
MARCH 4TH
20128 BROWNSVILLE ST.
CASSOPOLIS, MICHIGAN
@ 10AM



SCHRADER
Real Estate and Auction Company, Inc.



800-451-2709 SchradersAuction.com



AUCTION

20128 BROWNSVILLE ST.
CASSOPOLIS, MICHIGAN

MONDAY **MARCH 4TH @ 10AM**



AUCTIONEER'S NOTE:

Dennis & Dick are discontinuing their row crop operation. You now have the opportunity to buy some good used equip. they no longer need. We are also selling Riley Wyant Estate's equip.

OFF ROAD PARKING

TRACTORS & FARM RELATED

- **2002 JD 8420 MFWD Tractor**, 18.4R46 Duals, PS, 4 Remote, 1000 Pto. Coupler, Buddy Seat, 18 Front Wts, 2- 1500 lb. Wts. 4- Out Side Wts. 5547 Hrs. S# 003431
- **JD 440 Bull Dozer**, Diesel, 9' Blade, Pto. 14" Track
- **JD X534 AWS GT**, 4 Wheel Steer, Hydro, 54" Mower Deck
- **Troy-Bilt 2 Stage Snow Blower** 26" 8.5hp. Electric Start
- **JD GreenStar 3 2360 Display**
- **JD StarFire 3000 Receiver**
- **JD HX 20 Rotary Cutter**, 20' Bat Wing
- **JD Flat Bed Wagon w/ Hyd. Lift**
- **Calhoun Flat Bed Wagon w/ Hyd. lift**
- **MISC. Items, Parts & Supplies**, Approx. 20 Minutes

PLANTING • TILLAGE • CROP CARE

- **JD 1770 NT Planter**, 12x30, Vac. MaxEmerge XP, Liq. Fert. 450 gal. Tank, Large Seed Hoppers, Spray Att, Row Cleaners, Red Ball, Monitor
- **Dalton 3028 NH3 Applicator**, 11 Shank, Closing Disks, Hyd. Fold, Rear Hitch
- **ADS ST 100 Seeder Tender**, 2 Box
- **JD 6000 High Boy Crop Sprayer**, Diesel, 500gal. Single Front wheel
- **1000 Gal. Tandem Axle Nurse Tank**, Poly, 11L-16, W/ Transfer Pump
- **Cert. Equip. 1600 Gal. Alum Spray Wagon**, 20 Wheels, W/ Transfer Pump
- **Saddle Tanks, Unver. Mount**, fits New Style JD w/ MFWD
- **JD 875 Row Cult.** 6x30, C Shanks W/ Springs, Guide Coulters
- **JD 2310 Field Finisher**, 21'9", Walking Beam, Spike Att. Rolling Baskets
- **2- Unverferth 1235 Rolling Harrows**, 50' Spike Att. Kirkdorfer Farms
- **JD 714 Mulch Tiller**, 11 Shank, Hiniker Buster Bar
- **JD 710 Mulch Tiller**, 7 Shank, Buster Bar
- **JD 220 Center Fold Disk**, 18'
- **JD 400 Rotary Hoe**, 30'
- **Farm Forge 3Pt. Disk**, 6' Notched Blades
- **Lely Roterra RH 450-40 Mulcher**, 3Pt.
- **JD F145 Semi Mount Plow**, 5x16
- **RD Cole NH3 Tank**, 9'6" Dia.
- **2- Kale 2200 gal. Poly Tanks**
- **2- 500 gal. Tanks**, On Skids
- **NH3 Tool Bar Applicator**, 9 Shank, 3Pt.



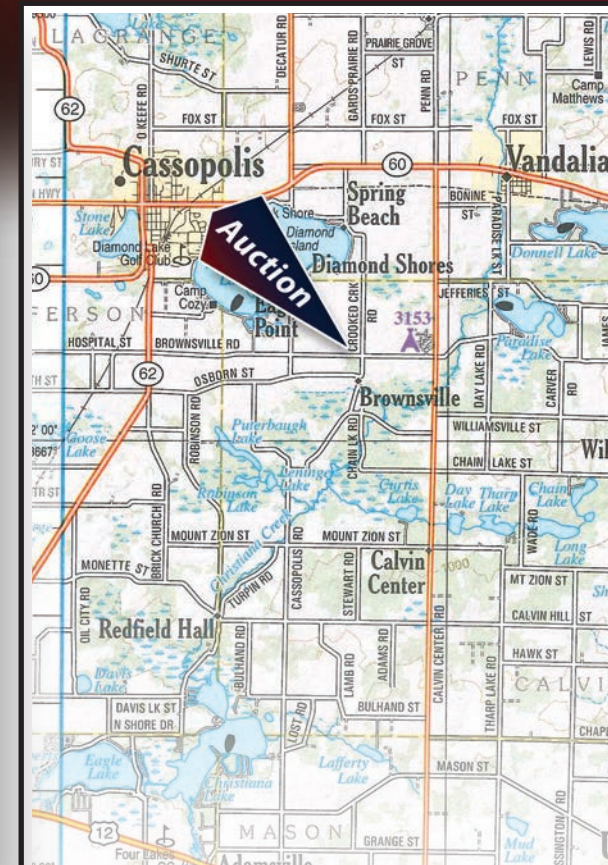
HARVEST EQUIPMENT

- **2003 JD 9650 STS Combine**, 20.8R42 Duals, Con-tour Master, GreenStar, Chopper, Buddy Seat, 1913 Sep. Hrs. 3163 Eng. Hrs. S# 701630
- **2003 JD 1293 Corn Head**, 12x30
- **2006 JD F630 Flex Head**, 30' Hydra Flex
- **J&M HT 30 Head Cart**
- **2- J&M 385 G Wagons**, 385 bu. 385/65R22.5 Tires, Cushion Adj, Hitch
- **2- J&M 350-20 G Wagons**, 350 bu. 20" wheels
- **Kilbros 375 G Wagon**, 375 bu. Kilbros Gears
- **2- M&W Little Red Wagons**, 350 bu. M&W 10T Gears
- **M&W Little Red Wagon**, 200 bu. M&W Gears
- **Gravity Wagon Auger**
- **Brock 2500 bu. Hopper Bottom Wet Tank**, Safety Cage
- **Behlen M700 Grain Dryer**, LP
- **2016 Hutchinson 10"x72' Transport Auger**, Swing Away Auger
- **2011 Hutchinson 8"x33' Transport Auger**
- **Hutchinson 8"x55' Transport Auger**
- **Hutchinson 6"x55' Transport Auger**
- **Hutchinson 6"x30' Transport Auger**
- **Bazooka C800 Transport Auger**
- **6"x16' Auger**
- **JD 338 Sq. Baler**, Wide Pickup



RILEY WYANT ESTATE

- **NH LS 160 Diesel Skid Steer**, Super Boom, 10-16.5NNS Tires, 60" Mat. Bucket 1045 Hrs. S# LMU010756
- **Premier Fork Att. w/ Back Stop**
- **NH Manure Tine Bucket**
- **Kasco Bale Spear**
- **2003 Chevy 3500 4X4 Dually PU**, 4Dr. Vortec 8100 Eng. 158K Miles
- **JJN Gooseneck Trailer**, 24' Tandem Axle, 286/85R16, Ramps w/ Center Section
- **JD 3020 Tractor**, Gas, Syncro, WF, 2 Remote, 540/1000, 3pt. 1pr. Rear Wts. Shows 2156 Hrs.
- **2018 County Line Rotary Cutter**, 3pt. 5' like new
- **NH 488 Haybine**, Rubber Rolls, 540 pto.
- **NH 258 Rolabar 5 Bar Hay Rake**
- **NH 276 Hayliner Sq. Baler**
- **Pequea 910 Tedder**
- **9-10' Green pull Drag**
- SHEEP EQUIP:**
- **Sheep & Goat Working Tub System**
- **Sheep & Goat Working Chute**
- **Milker like new, Pens & Gates**
- **All in excellent condition**
- **Misc. Livestock Gates, Air Compressor, Chain Saw, Large Fan, Misc. Supplies & General Farm Items**



INSPECTION DATE: Sat. March 2, 10:00 to 2:00

OWNER: WOODEN ROW CROP FARMS

• Dennis: 517-937-5568 • Dick: 269-445-3447

SALE MANAGERS:

• Ted Boyer: 574-215-8100

• Ed Boyer: 574-215-7653

ed@boyerpig.net



SCHRADER
Real Estate and Auction Company, Inc.

800-451-2709 • SchraderAuction.com