

950 N. Liberty Drive  
Columbia City, IN 46725  
260-244-7606 or 1-800-451-2709

Contact:

Dean Retherford  
765-427-1244



Follow us on:



Get our new iOS App



**800-451-2709**

**SchraderAuction.com**

# RESIDENTIAL DEVELOPMENT LAND FOR SALE

60 Acres • West Lafayette, IN • Tippecanoe County  
79.6 Acres • East Indianapolis, IN • Marion County





# RESIDENTIAL DEVELOPMENT LAND FOR SALE



60 Acres • West Lafayette, IN • Tippecanoe County

79.6 Acres • East Indianapolis, IN • Marion County



Tippecanoe Twp., Tippecanoe County, IN - West Lafayette - Harrison Schools. Located just 1.5 Miles from the High School and Middle School

60<sup>±</sup>  
ACRES



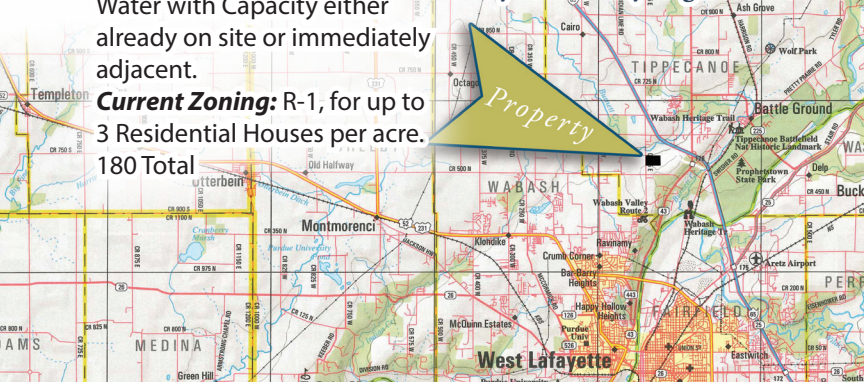
ASKING PRICE: \$1,500,000  
or \$8,333 per build-able lot.

**Pasture with a pond:** Also includes 20 acres of cropland.  
**Road Access:** CR 75 East, Just North of 500N.

**Utilities:** Sewer and City Water with Capacity either already on site or immediately adjacent.

**Current Zoning:** R-1, for up to 3 Residential Houses per acre. 180 Total

This is an excellent opportunity for anyone looking to explore Lafayette, IN housing market, with a limited exposure in a fast growing area, Zoning and utilities already in place, simply needs to be platted and you are ready to get started!



Lawrence Township, Marion County - At Oaklandon, Just South of Pendleton Pike. Located right behind Watson's

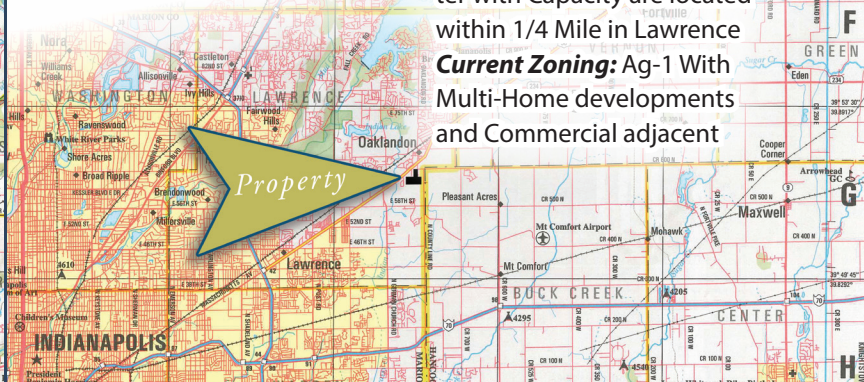
79.6<sup>±</sup>  
ACRES



ASKING PRICE: \$2,500,000  
Take Downs and Timing is Negotiable

An excellent opportunity in a well developed neighborhood with density possibilities beyond the norm. Not adjacent to the trailer parks.

**Wooded pasture:** 50 Acres  
**Road Access:** Corner of E62nd St. Near Hancock County Line.  
**Utilities:** Both Sewer and Water with Capacity are located within 1/4 Mile in Lawrence  
**Current Zoning:** Ag-1 With Multi-Home developments and Commercial adjacent



The information on this sheet is subject to verification and no liability for errors or omissions is assumed by the Schrader Agency.

Offenbacher / CC&J

**75<sup>th</sup> ANNIVERSARY**  
Since 1944 **SCHRADER**

**800-451-2709**  
schraderauction.com/listings

**Listing Agent: DEAN RETHERFORD**  
765-427-1244 • deanrethorford@schraderauction.com