

950 N Liberty Drive.,
Columbia City, IN 46815
260-244-7606

AUCTION MANAGERS:
Arden Schrader: 260-229-2442



SEPTEMBER 2019

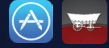
Sun	Mon	Tue	Wed	Thu	Fri	Sat
1	2	3	4	5	6	7
8	9	10	11	12	13	14
15	16	17	18	19	20	21
22	23	24	25	26	27	28
29	30					

TERMS: Cash or Check w/proper ID, Credit Card
w/4% convenience fee. Not responsible for
accidents. Lunch Available

Follow us on:



Get our iOS App



www.SchraderAuction.com

800-451-2709

PERSONAL PROPERTY

AUCTION

SATURDAY, SEPT 21ST @ 10AM

PERSONAL PROPERTY

AUCTION

SATURDAY, SEPT 21ST @ 10AM



**LOCATED: 5725 E 400 S
LAOTTO, IN**

**KUBOTA L4240 TRACTOR W/LOADER • JOHN DEERE 4X2 GATOR • 18'
RAFTER TRAILER • 16' SEA NYMPH FISHING BOAT • QUALITY WOOD-
WORKING TOOLS • LUMBER • SHOP TOOLS • ASSORTED HOUSEWARES**



PERSONAL PROPERTY AUCTION

SATURDAY, SEPT 21ST @ 10AM

Auctioneer's Note:

Due to the passing of her husband Harry, Peggy has no need for this personal property. Like new Kubota tractor, quality woodworking equipment and much more. **DON'T MISS THIS AUCTION!**

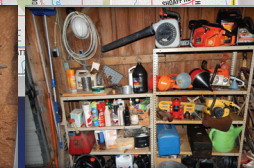
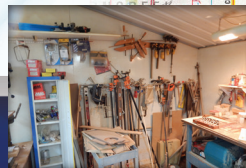
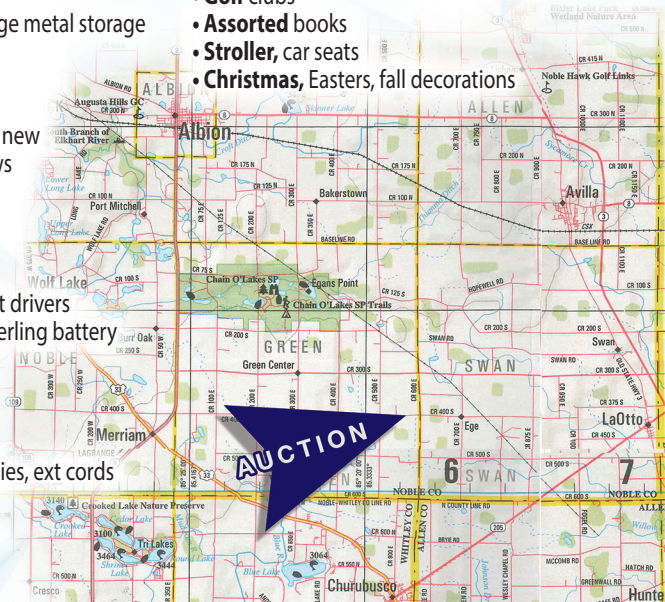


LOCATED: 5725 E 400 S, LaOtto, IN : From the intersection of SR 9 and US 33 at Merriam, IN take SR 9 north ½ mile to CR 400 S then east 5 ¾ miles to the auction OR from the intersection of SR 205 & SR 3 at LaOtto take SR 205 Southwest 1 mile to CR 450 S and go due west 1 mile to CR 100 E, North ½ mile to CR 400 S then west 4 ¼ mile to the auction.

- **2010 Kubota L4240 HST MFWD tractor**, LA 854 loader, 17.5L x 24 tires, 3pt, pto, **ONLY 351 hrs**
- **Pallet fork** for Kubota loader
- **8' HD grader blade**
- **6' ARPS snow blower**
- **5' grader box**
- **Lickity splitter log splitter**, 9 hp gas motor
- **2003 John Deere 4x2 gator**, 1019 hrs
- **Lawn sprayer** with boom, (fits gator)
- **Fimco fertilizer spreader**
- **2004 Rafter 18 tandem trailer w/full ramp**
- **1995 Sea Nymph 16' alum. boat & Shorelander trailer**, 50hp Evinrude, Mikota trolling motor, depth finder, elec. anchor winches, live well, clean boat
- **1974 Coachmen Cadet 28' tandem axle camper**
- **Saw Stop contractor's saw**, 30" out feed table
- **Grizzly 15" planer**, spiral cutter head, 220V
- **Grizzly jointer**, 220V
- **Grizzly 14" bandsaw**, 220V
- **Grizzly dust collector**, 220V
- **Jet Oscillating drum sander**
- **Jet benchtop oscillating spindle sander**
- **DeWalt miter saw**, stand, and Laser system
- **Jessum router table**, stand, fence and router lift
- **Delta 6" belt 9" disc sander w/stand**
- **Steel City hollow chisel mortiser**
- **Steel City air filter**, 3sp
- **Saw Stop shop vac dust separator**
- **16 gal Shop vac**, (2) Craftsman shop vacs
- **Vika work bench**
- **Sanchin 5sp drill press**
- **Leich dovetail jig**
- **Dubby cut of fixture**
- **Earlex spray station 6900** low pressure paint system
- **Panel Max glue system**
- **Large assortment** of white oak, red oak, cherry & walnut lumber
- **Porter Cable & Craftsman routers**

- **Porter Cable sanders**, assorted sanders
- **Makita circular saw**, Makita cordless saw
- **Circular saw w/track**
- **Woodcraft 16pc Forstner bit set**
- **Craftsman impact driver**
- **Pipe clamps**, assorted clamps
- **Numerous power tools**
- **Craftsman 26 gal air compressor**
- **Air hose reels**
- **Work benches**, roll around work carts, panel cart
- **Assorted hand tools**, gear pullers
- **Hardware cabinet**, handles & knobs
- **Onan 6500 portable generator** (never used)
- **Work Pro 2700 psi gas power washer**
- **Little Giant alum ladder**, 20' alum ext ladder, 6' fiber-glass ladder
- **Cabinets, shelves**, 6 spot locker, large metal storage cabinets w/drawers
- **Scaffold section**
- **Bench & vise**, small anvil
- **96 gal fuel tank w/hand pump**, like new
- **Stihl, McCulloch**, (2) Echo chain saws
- **Echo weed eater**, Echo leaf blower
- **Craftsman 5hp tiller**, Mantis tiller
- **400 lb of fertilizer**, 25-10-10
- **Lawn roller**, lawn aireator
- **Garden tools**, post hole digger, post drivers
- **Road master battery jump pack**, sterling battery charger
- **Lincoln battery grease gun**
- **(2) shop creepers**
- **Squirrel cage fans**
- **Plumbing supplies**, electrical supplies, ext cords
- **Clamps**, chains
- **Nuts, bolts, screws**
- **4 wheel cart**
- **Whirlpool refrigerator**
- **Frigidaire upright freezer**

- **Dorm refrigerator**
- **Turkey deep fryer**
- **Cane seat & back rocker**
- **Hutch top**
- **Chairs**, file cabinets
- **Church pew**
- **House fans**, heater
- **Antique camera**
- **Sewing machine**
- **Twin beds**, toddler bed, desk
- **Window blinds**, curtain rods
- **Pictures & picture frames**
- **Card table & chairs**, shelving
- **Dishes**, housewares
- **Lamps**, radio
- **Golf clubs**
- **Assorted books**
- **Stroller**, car seats
- **Christmas**, Eaters, fall decorations



OWNER: Mrs. Harry (Peggy) Draper

AUCTION MANAGER: Arden Schrader: 260-229-2442

#AC63001504 #AU01050022

SchraderAuction.com

800-451-2709