

# LAND FOR SALE

— NOBLE COUNTY —

# 23<sup>±</sup> ACRES

ROLLING SETTING • POTENTIAL WALKOUT • EASY ACCESS TO US-33



- **23<sup>±</sup> acres potential building site**
- **Green Township**
- **Rolling setting**

- **Potential walkout**
- **Easy access to US-33**
- **Approximately 14<sup>±</sup> acres tillable per FSA**

The information on this sheet is subject to verification and no liability for errors or omissions is assumed by the Schrader Agency.

Krider • KJ35N





# LAND FOR SALE

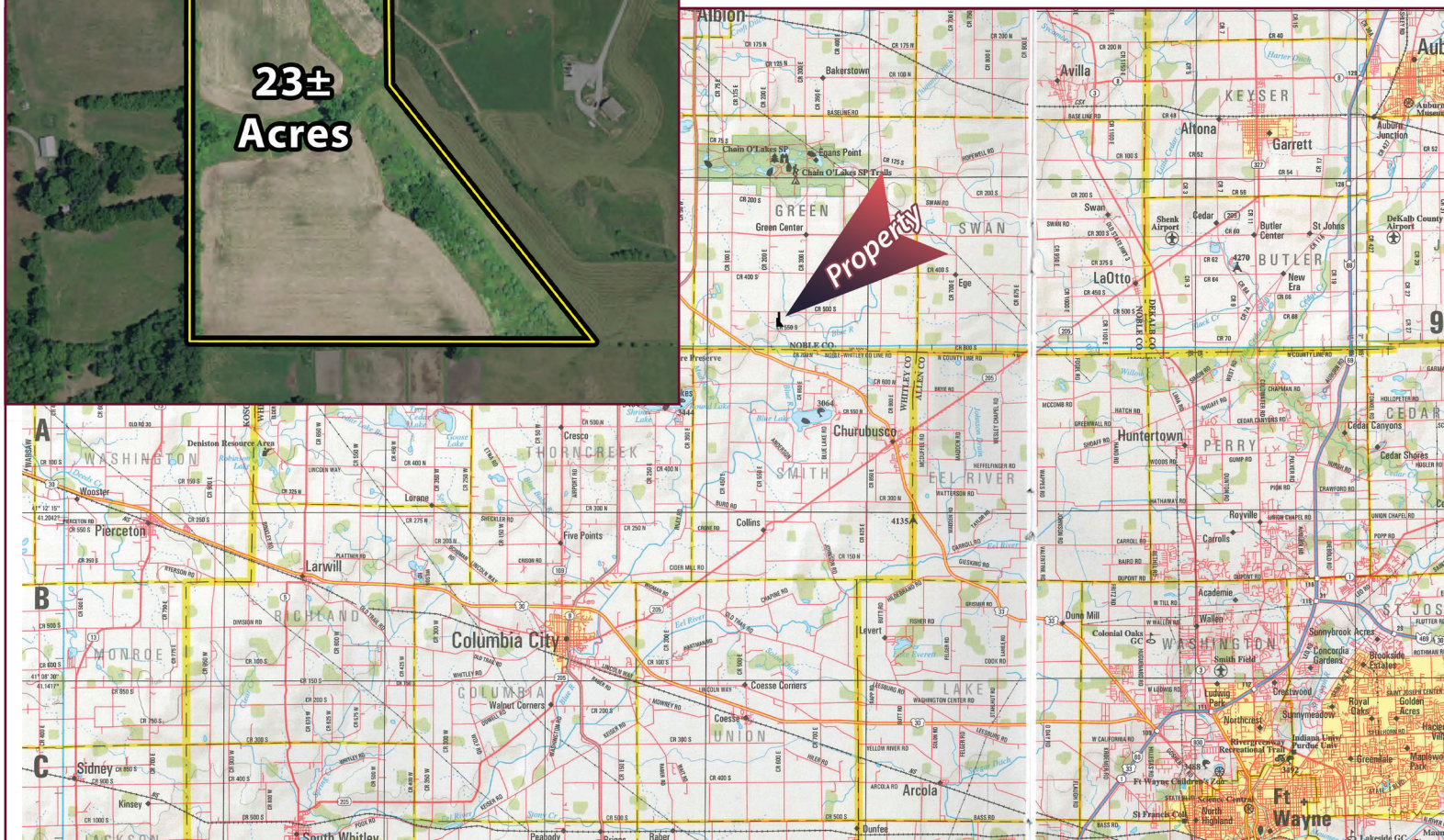
## NOBLE COUNTY

# 23<sup>±</sup> ACRES



- Just 5<sup>±</sup> miles northwest of Churubusco
- 10<sup>±</sup> miles northeast of Columbia City
- 15<sup>±</sup> miles northwest of Fort Wayne

**Directions:** From the intersection of US-33 and CR 200 E (5 miles northwest of Churubusco) travel north on CR 200 E 1 mile to CR 500 S. Turn right on CR 500 S and travel 1/4 mile to the property.



The information on this sheet is subject to verification and no liability for errors or omissions is assumed by the Schrader Agency.

Krider • KJ35N