

AUCTION LOCATION: 3260 PARMAN RD., DANSVILLE, MI
DIRECTIONS: From Dansville: South 2 miles on Williamston Rd to Dexter Trail, turn east on Dexter Rd 1.5 miles to Parman Rd. Continue to Auction Site.

Friday, March 6th • 10:00am

INSPECTION DATE:
Friday, February 28th
9:00am - 1:00pm

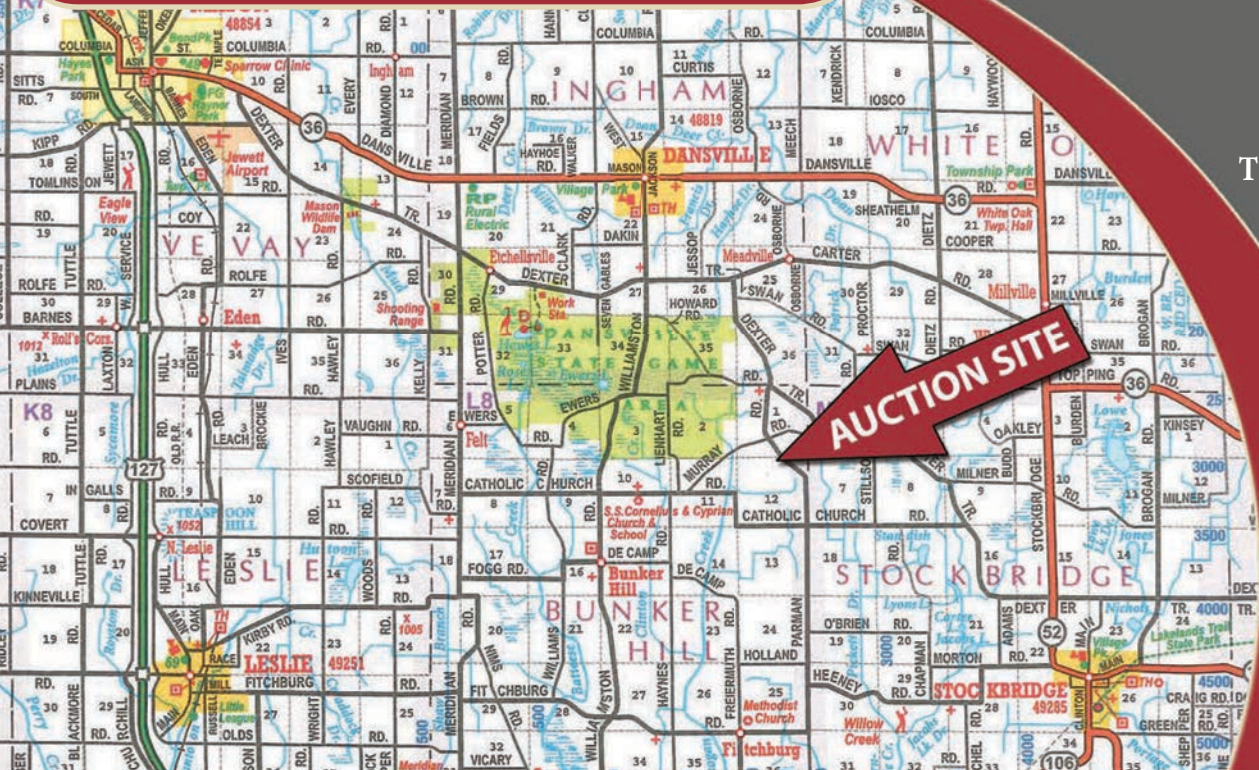
TERMS & CONDITIONS:

Cash or Check w/proper ID.
 4% convenience fee for credit cards. Announcements made the day of the auction take precedence over any printed material. Not responsible for accidents.

SCHRADER
 Real Estate and Auction Company, Inc.

800-451-2709

www.SchraderAuction.com



SCHRADER
 Real Estate and Auction Company, Inc.



CORPORATE HEADQUARTERS
 950 N. Liberty Dr., Columbia City, IN 46725

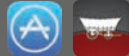
AUCTION MANAGERS:
Robert Mishler, 260-336-9750
Eric Ott, 260-413-0787

AC63001504 • MI#6505261770

Follow us on:



Get our iOS App



MARCH 2020						
SUN	MON	TUE	WED	THU	FRI	SAT
1	2	3	4	5	6	7
8	9	10	11	12	13	14
15	16	17	18	19	20	21
22	23	24	25	26	27	28
29	30	31				

800-451-2709
SchraderAuction.com

FARM EQUIPMENT AUCTION
 Garner Farms

Ingham County, Michigan

FARM EQUIPMENT AUCTION
 Garner Farms

Friday, March 6th • 10:00am

Ingham County, Michigan
 Auction held at: 3260 Parman Rd.
 Dansville, MI

TRACTORS • DOZER
PLANTING • TILLAGE
COMBINE • GRAIN TABLE
HEAD CART • GRAIN CARTS
SEMI • PICK-UP
WAGONS • TRAILERS
GUIDANCE • GRAIN VAC
SNOW BLOWER • LOADER
GRAIN BINS • DRYER
TIRES • POLY TANKS
MISC FARM RELATED ITEMS

LIVE INTERNET BIDDING
 Visit SchraderAuction.com for Details
 or call Eric Ott 260-413-0787

SCHRADER
 Real Estate and Auction Company, Inc.

800-451-2709 • SchraderAuction.com



FARM EQUIPMENT AUCTION

Garner Farms

Ingham County, Michigan

AUCTION LOCATION: 3260 PARMAN RD., DANSVILLE, MI

DIRECTIONS: From Dansville: South 2 miles on Williamston Rd to Dexter Trail, turn east on Dexter Rd 1.5 miles to Parman Rd. Continue to Auction Site.



Friday, March 6th • 10:00am

INSPECTION DATE:
Friday, February 28th
9:00am - 1:00pm

TRACTORS • DOZER

- 1994 CIH 9230, 4wd, Row Crop Special, 4 remotes, big 1000 pto, powershift, 18.4R38 rubber, recent replacement of articulation bushings & drive shaft U-joints, 6886 hrs
- 1979 White 2-155, 2wd, 3 remotes, small 1000 pto, 3pt, quick hitch, 6 suitcase weights, 20.8R38 rears & duals, 14L-16.1 fronts, 8704 hrs
- 1960 Massey Ferguson 65, diesel, 540 pto, 3pt, 13.6-38 rears, 6.00-16 fronts, 4527 hrs
- 1991 JD 450G dozer, Series IV, 6 way blade, 8531 hrs

PLANTING • TILLAGE

- 2015 Kinze 3660 planter, 16 row, 30", ASD, scales, Keeton Seed firmers w/fertilizer tubes, Martin row cleaners, spike closing wheels, covering chains, Precision V-Set meters for corn & soybeans, clean sweep row cleaner control, Row flow individual row shut off, 20/20 seed sense screen & control, 3-250 gallon tanks, red ball system, *only 4500 acres*
- 1997 Great Plains 3010 drill, No-till, 30', 7 1/2" spacing, markers
- Tebbins 5 shank sub soiler, pull type
- DMI 5 bottom plow, vari-width, semi-mount
- Krause 25' disc, rock flex, 8" spacing
- Hiniker 24' field cultivator, buster bar, rear hitch

COMBINE • GRAIN TABLE • HEAD CART • GRAIN CARTS • WAGONS

- 2008 JD 9770 combine, 4wd, STS, Bullet Rotor, single point hookup, bin extension, chopper, 520/85R42 duals, 28L-26 steer tires, 3478 engine, 2267 separator
- Lancota rear hitch for combine
- 2008 JD 635F grain table, hydra flex, single point hookup, hydraulic fore & aft
- Horst 35' head cart, all wheel steer, lights
- 35' head cart
- 2005 Kinze 1050 grain cart, big 1000 pto, roll tarp, camera, 1250/45-32 tires
- Lucknow grain cart, 600 bushel, 24.5-32 tires
- (2) Killbros 375 gravity wagons on JD gears, one w/ aviation tires
- Killbros gravity wagon on Electric gear
- Hutchinson transport auger, 8" x 50', hydraulic drive
- Mayrath 6"x14' hydraulic drive auger
- 6"x36' grain auger

SEMI • PICKUP • TRAILERS

- 1999 Freightliner semi, daycab, ISM cummins, eaton fuller trans, aluminum tanks, aluminum outers, 22.5 rubber, air ride, 530,652 miles
- 1985 Ford F800 fuel truck, 370 gas, w/2000 gallon stainless steel tank, w/2 pumps, automatic, 31,288 miles
- 1992 Dodge 2500 pickup, 4x4, cummins diesel, automatic, transmission issues, 207,071 miles
- 1967 Fruehauf dump trailer, 30', tandem axle plus lift axle, spring ride, coal chute, 22.5 rubber
- (2) 28' single axle flat bed trailers, spring ride, steel deck, no-title
- 1983 Stoughton 18' flat bed implement trailer, ramps, tandem axle
- Charles 23' implement trailer, tri-axle, 18'+5' beaver tail, ramps, pintle hitch, no-title
- 1950s Shoreline Coach travel trailer, single axle, stored inside, good condition

GUIDANCE

- **GRAIN VAC**
- **SNOW BLOWER**
- **LOADER**

- JD 2630 display w/auto steer & swath control
- JD 3000 globe
- D-K grain vac, 540pto, 60' pipe, 5"
- George White Double Blizzard snow blower, 8', 540 pto, dual auger
- Woods 350 tractor loader, 8' bucket
- Forks for Woods 350 loader

GRAIN BINS • DRYER

- (2) Read 27' grain bins, 7 ring, 10,000 bushel, no floor - *will be taken down by June by seller*
- Read 27' grain bin, 9 ring, 13,000 bushel, no floor - *will be taken down by June by seller*
- (2) Brock 30' grain bins, 7 ring - *to be removed by buyer by August 1st*
- (2) Brock 21' grain bins, 7 ring - *to be removed by buyer by August 1st*
- Brock 12' cone bottom bin, 7 ring - *to be removed by buyer by August 1st*
- Super B 375C grain dryer, continuous flow, w/3 phase converter, 5048 hours

TIRES • POLY TANKS

• MISC FARM RELATED ITEMS

- (2) 20.00-20 26 ply tires on 10 bolt rims
- (4) 20.8-34 clamp on duals • (2) 18.4-38 clamp on duals
- (16) 255/70/22.5 tires
- 1600 gallon poly tank • 1400 gallon poly tank
- (5) 200 gallon shuttle tanks, 1 w/pump
- (2) gas power washers
- Simplicity Lawn Mower, 50" deck
- Shop Cherry picker
- Country Home trimmer on wheels, gas, 5hp
- Craftsman edger on wheels, gas
- Mast mount Cascade forklift barrel rotator w/clamp
- Mast mount fork lift rotator
- Oliver Gravity seed separator, 10hp, 3 phase motor, model 160A
- Crippen Model GX-354-LH, 7 1/2 hp, 3 phase motor
- Misc commercial lights, florescent
- Garner Denver air operated chain fall, 3300 lbs
- Yale Eaton 3 ton air operated chain fall, I-beam mount
- Yale 1 ton overhead beam air hoist
- (2) Morse 1500 lb barrell hoists
- Self contained hydraulic pump, 5hp, 3 phase
- Self contained hydraulic pump, 10hp, 3 phase
- Self contained hydraulic pump, 30hp, 3 phase
- (2) Miller wire feed welders, 250 amp
- 24 amp battery charger
- (5) 36 amp battery chargers
- Woodbarry Belt conveyor, 16' long, 18" wide, 1/2 hp - 3 phase motor
- 8" 1500 G/M DE Laval irrigation pump w/150 hp - 3 phase motor
- Pallet of misc hose, 2.5" & 4"
- Misc scrap steel

SELLER:
GARNER FARMS

AUCTION MANAGERS:
Robert Mishler,
260-336-9750 &
Eric Ott, 260-413-0787

LIVE INTERNET BIDDING
Visit SchraderAuction.com for Details
or call Eric Ott 260-413-0787



SCHRADER
Real Estate and Auction Company, Inc.

MANY MORE PHOTOS ONLINE!!

800-451-2709 • www.SchraderAuction.com