

WEDNESDAY, MARCH 11TH - 10:00 AM M.T.

SCHRADER
Real Estate and Auction Company, Inc.
Visit SchraderAuction.com
Call 800-451-2709

AUCTION

RETIREMENT

Ron Wollert Farms

- Misc
- Harvesting Equipment
- Tillage/Planting Equipment
- Hay Equipment
- Construction Equipment
- Tractors • Trucks & Trailers



LIVE INTERNET BIDDING
Visit SchraderAuction.com for Details
or call 800-451-2709

Bent County • Wiley, CO Auction held at 41969 C.R. 34, Wiley CO, 81092

800-451-2709
SchraderAuction.com

Get our iOS App

Follow us on: YouTube, Facebook, Twitter

MARCH 2020						
SUN	1	2	3	4	5	6
MON	8	9	10	11	12	13
TUE	15	16	17	18	19	20
WED	22	23	24	25	26	27
THU	29	30	31			

March 20, 2020.
REMOVAL: All items to be removed by 5 pm on 13th, Barn - 4pm. By appointment after the 13th.
LOAD OUT: Day of Auction till 5pm. March 12th & 13th, Barn - 4pm. By appointment after the 13th.
Announcements made the day of the auction take precedence over any printed material. Not responsible for accidents.
TERMS: Cash or Check w/proper ID.
Announcements made the day of the auction take precedence over any printed material. Not responsible for accidents.

#AC63001504

Robert Mishler, 260-336-9750

Roger Diehm, 260-318-2770 or

Questions regarding the Auction or Equipment:

Roger Diehm, 260-318-2770

Sale Manager:



CORPORATE OFFICE:
950 N. Liberty Dr., Columbia City, IN 46725
email: auctions@schraderauction.com

SCHRADER
Real Estate and Auction Company, Inc.

Bent County • Wiley, CO

AUCTION

RETIREMENT

Ron Wollert Farms

Bent County • Wiley, CO

Auction held at 41969 C.R. 34, Wiley CO, 81092



Ron Wollert Farms

AUCTION

RETIREMENT

LIVE INTERNET BIDDING
Visit SchraderAuction.com for Details
or call 800-451-2709



- Tractors • Trucks & Trailers • Construction Equipment
- Hay Equipment • Tillage/Planting Equipment
- Harvesting Equipment • Misc

800-451-2709
SchraderAuction.com

SCHRADER
Real Estate and Auction Company, Inc.

WEDNESDAY, MARCH 11TH - 10:00 AM M.T.

Bent County • Wiley, CO

Ron Wollert Farms

RETIREMENT AUCTION

WEDNESDAY, MARCH 11TH - 10:00 AM M.T.

AUCTION LOCATION: 41969 C.R. 34, Wiley, Co., 81092

DIRECTIONS: From Wiley: 3 miles north on Hwy 287. West on CR 55 to CR 34, north 3 miles. Auction is on the West side of the intersection.

From the Eads Colorado area: South on 287 to Prowers/Kiowa Line. Rd W-W, Hwy marker 96. West 3 mile to CR 34, south on CR 34 1.5 miles. Auction is on the West side of the intersection. Look for signs.



TRACTORS

- **2013 John Deere 8335R Tractor MFWD**, IVT, ILS, hyd 3rd link, 5-remotes, big 1000 PTO, Firestone 480/80R50 – 420/85R34, dual fronts & rears, inner & outer rear weights, 22 front weights, 1685 hrs, #1RW8335REDD070681
- **2012 Case IH Magnum 290 MFWD**, PS Trans., hyd 3rd link, 4 remotes, big 1000 PTO, LED light package, Titan 480/80R50, 380-80R38, duals fronts & rear, inner & outer rear weights, 18 front weights, 1355 hrs, #2BRD02649
- **1991 Case IH 7110**, 18/4 speed PS trans., 3 remotes, LED Light package, 1000/540 PTO, QH, axle mount dual hubs, Agri Radial II 18.4-42 rear tires, inside rear weights w/10 front wide, NOTE: this tractor has 2 hrs on complete O/H, 5876 hrs, #JJA0031646
- **1990 Case IH 7110**, 18/4 speed PS trans., 3 remotes, LED light package, 1000/540 PTO, QH, axle mount dual hubs, 480/80R42 rear tires, inside rear weights, 10 front weights, NOTE: this tractor has 1000 hrs on complete O/H, 6914 hrs, #JJA0026863
- **International 656 Hydro**, gas, wide front, 3pt hitch, 2 remotes, 15.5-38 rear tires, axle

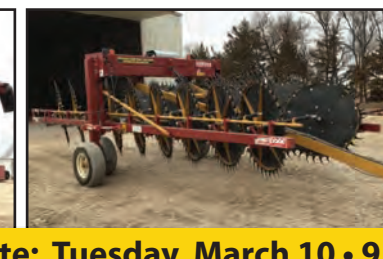
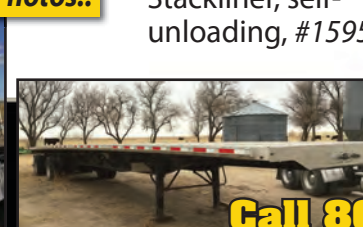
hubs, showing 4656 hrs

- **Set of 18.4-42 duals**
- **Set of 15.5-38 duals**

TRUCKS & TRAILERS

- **2002 Peterbilt 379** Ext Hood "American Class Addition", Unibuilt/Ultracab 60" Sleeper, C-15 Cat eng., 20,000 miles on CAT cert. rebuild, 18 speed trans., 11R-24" tires/aluminum wheels, 824,634 mi.
- **2005 Ford Sterling tandem day cab**, Mercedes-Benz motor, Eaton 10 speed trans, air ride, Alum wheels, Alum tanks, 377,858 mi.
- **2012 Merritt 42' Hopper Bottom**, ag hoppers, roll tarp, air ride
- **1986 Timpte 50' Super Hopper** 72" sides, ag hoppers, spring ride, w/new 2 speed doors
- **2012 Transcraft Eagle II 102"x53'** Alum straight deck trailer, Hendrickson Suspension/sliding rear axle, 295/75R22.5 alum outer wheels, stainless tool box
- **1982 Fontaine 50' straight deck trailer**, spring ride, w/4' Extension "bolt on"
- **International 1600 Loadstar**, gas, V8, 4+2 trans, 16' Bed w/hoist, Westfield tailgate auger

See Website for More Photos!!



Inspection Date: Tuesday, March 10 • 9 a.m. to 3 p.m.

CONSTRUCTION EQUIPMENT

- **2016 Cat TH 407C Tele-handler**, enclosed cab, hydra quick coupler, aux hydra, 460/70R24 Michelin tires, 923 hrs
- **Material bucket** with bolt on teeth
- **Grapple bucket**
- **HD forks • Hay forks • Grapple**
- **2014 Case SV 300 unloader**, ride control, heated and A/C cab, 84" bucket, aux hydra and pwr, weight package, 675 hrs, "like new"
- **Hancock Model E-4**, Loyd pan, pull type pan, pto drive self loader
- **pull type 12' box scraper** HD
- **Leon HD 3pt 12' 6 way grader blade**
- **2005 Cat 420-D Backhoe**, full cab and air, 4x4, extend hoe, 1909 hrs, #0420DAFOP22689

HAY EQUIPMENT

- **2013 Massey Ferguson/Hesston WR9770 Swather**, Razor Bar 16' head, twin max, steel rolls, Top Con guidance, Firestone 23.1/26 turf tires, 960 hrs, #AGCM97700CHS13419
- **2019 Darf Rake Model FM/1017 W** Series, 18 wheel, only 300 AC of use, like new!
- **2018 Massey Ferguson 1840 Inline Baler**, hyd tension, knotter fans, 540 pto, 1/4 turn bale chute, small bale, only 3000 bales, like new unit!
- **2016 Massey Ferguson/Hesston series 2190**, 4x4 baler, 3 bale accumulator, 14,913 bales, "like new"
- **New Holland Model 1044** Stackliner, self-unloading, #15950

TILLAGE/PLANTING EQUIPMENT

- **2016 Sunflower 6631 30'** Vertical till, saber blades, C-Flex, Hydraulic draft/level, spring down pressure flat bar rolling basket, "like new condition"
- **2016 1435-35' Rock Flex Disk**, C-Flex, Hydraulic draft/level, walking tandems on main frame and wings, 23" Front Blades, 23 1/2" Rear Blades
- **2011 Sunflower 7610 pull type 8 row Strip tiller**, JD rate controller
- **John Deere 1720 3pt 12 Row 30" planter**, MaxEmerge XP units, gullwing fold, Hydro Drive, Air Down Press, Row Cleaners, 2 Bushel boxes
- **Great Plains 30' 3 section drill**, double disc openers, press wheels, down pressure springs, 6" centers, w/grass seeder
- **Wetherell 12 row 30" min-til cultivator**, gauge wheels, discs, sweeps with hiller wings
- **2013 McFarland 44' 16 bar spike tooth harrow**
- **Danish tine 34' field cultivator**
- **Case IH 415 24' cultimulcher**, solid packer wheels, danish tine teeth, flat fold
- **Case IH 6814 3pt 7 shank V Ripper**
- **3pt 9 shank irrigation groover**

- **Brillion Sure Stand 10'** Pull type grass seeder

- **Tyler Tandem axle Fertilizer Spreader**, tarp, single spreader



SELLER:
Ronald Wollert

SALE MANAGER:
Roger Diehm,
260-318-2770

Questions regarding the Auction or Equipment:
Roger Diehm, 260-318-2770
Robert Mishler, 260-336-9750

SCHRADER
Real Estate and Auction Company, Inc.

Call 800-451-2709 • Visit SchraderAuction.com

Bent County • Wiley, CO

Ron Wollert
Farms

RETIREMENT AUCTION

WEDNESDAY, MARCH 11TH - 10:00 AM M.T.

AUCTIONEER NOTE: After a successful career of Ranching, raising crops and Hay, Ron is offering a very well maintained line of equipment at Auction. There will be a minimal amount of small items, so be on time for this opportunity to buy at auction. You will be hard pressed to find a cleaner line of Ag production equipment.



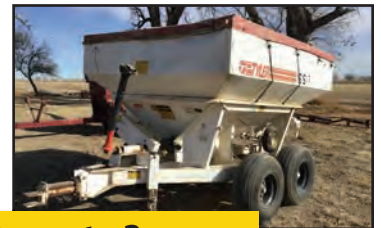
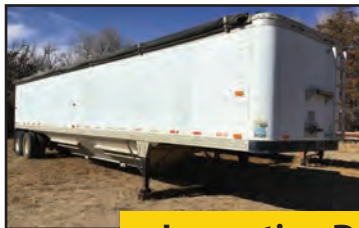
LIVE INTERNET BIDDING

Visit SchraderAuction.com for Details
or call 800-451-2709.

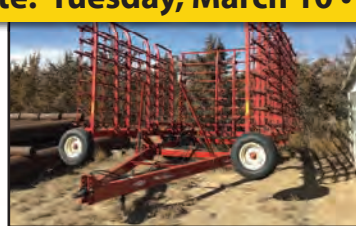


HARVESTING EQUIPMENT

- **Case IH 2388 Axial Flow Combine**, Crary Big Top Hopper ext, chopper, rock trap, chaff spreaders, LED lights, 2232 eng/1559 sep hrs, #JJC0270529
- **2008 Case IH 2208 Corn head**, 8 row 30", only 2000 acres of use
- **Case IH 1010 30' fore/aft, bat reel**, #JJ00308063
- **Wenco 30' header cart**, dolly wheel
- **2018 Brandt 1120XR Grain Cart**, scales, Goodyear 900/60R32 tires, Hydraulic spout, tarp, only 40,000 bushel use in fall of 2019, *This unit is as close to new as you will find*
- **2012 Westfield M-K130-91 Plus High cap**, 13"x91' auger, hyd lift, Right hand gear box, PTO, Swing away auger



Inspection Date: Tuesday, March 10 • 9 a.m. to 3 p.m.



See Website for
More Photos!!



Call 800-451-2709 • Visit SchraderAuction.com



SCHRADER

Real Estate and Auction Company, Inc.

Bent County • Wiley, CO

Ron Wollert
Farms

AUCTION

RETIREMENT

WEDNESDAY, MARCH 11TH - 10:00 AM M.T.



MISC

- Case IH fm1000 display, RTK unlocked and receiver
- JD 2630 display, RTK activations
- JD 3000 globe with RTK radio and activation
- Hienke Buffalo Roller Mill 540 pto, unloading conveyor, #72001254
- Bush Hog 12720, 20' HD use Bat Wing Mower, 1000 pto, chains frnt and rear, high lift, air plane tires, very little use, excellent condition
- John Deere MX10 3pt 10' rotary Mower
- Rhino 3pt 8' rotary mower
- Miller Bobcat 225G CC/CG-AC/DC welder, w/long leads, 8000 watt generator, torch set w/long leads, vice, tool boxes on trailer
- 1250 Gallon Gooseneck tandem axle Water wagon
- Several Bundles of new 2"-4" thick wall steel pipe
- Water tanks, T-Posts
- Several pipe gate & coral panels
- Bush Hog Zero turn 52" mower, Honda 20 hp engine, 246 hrs



LIVE INTERNET BIDDING
Visit SchraderAuction.com for Details
or call 800-451-2709.



TERMS: Cash or Check w/proper ID. Announcements made the day of the auction take precedence over any printed material. Not responsible for accidents.

LOAD OUT: Day of Auction till 5pm. March 12th & 13th 8am - 4pm. By appointment after the 13th.

REMOVAL: All items to be removed by 5pm on March 20, 2020.

SELLER: Ronald Wollert
SALE MANAGER: Roger Diehm, 260-318-2770
Questions regarding the Auction or Equipment:
Roger Diehm, 260-318-2770 or Robert Mishler, 260-336-9750

Call 800-451-2709 • Visit SchraderAuction.com



SCHRADER

Real Estate and Auction Company, Inc.