



Grubaugh Retirement Farm Equipment
Auction
 LaGrange County, IN

Timed Online Only
 Bidding Ends: **Thursday, September 24 at 1pm**

800-451-2709 • SchraderAuction.com

THE ORIGINAL MULTI-TRACT AUCTIONS
 LIVE WITH VIRTUAL
 TIMED ONLINE ONLY

Grubaugh Retirement Farm Equipment
Auction
 LaGrange County, IN

Timed Online Only

Bidding Ends: Thursday, September 24 at 1pm



Grubaugh Retirement Farm Equipment
Auction
 LaGrange County, IN

Timed Online Only
 Bidding Ends: **Thursday, September 24 at 1pm**

800-451-2709 • SchraderAuction.com

SCHRADER
 Real Estate and Auction Company, Inc.

CORPORATE OFFICE:
 950 N. Liberty Dr.,
 Columbia City, IN 46725

AUCTION MANAGER:
 ROBERT MISHLER,
 260-336-9750 (call or text)

AC63001504 • #AU08701553
 TERMS: Cash or Check w/proper ID.
 4% convenience fee for credit cards.
 Announcements made the day of the auction take precedence over any printed material. Not responsible for accidents.

SEPTEMBER 2020

SUN	MON	TUE	WED	THU	FRI	SAT
27	28	29	30			
20	21	22	23	24	25	26
13	14	15	16	17	18	19
6	7	8	9	10	11	12
	1	2	3	4	5	

Follow us on:

Get our iOS App

TRACTORS
 • COMBINE & HEADS
 PICKUP & 4 WHEELER
 PLANTER & TILLAGE EQUIP.
 WAGONS • MOWER • BACKHOE
 BLADE • MISC EQUIP.
 GRAIN BINS & AUGERS

FOR INSPECTION AND PICKUP:
 Equipment will be located at
 105 S 500 E, LAGRANGE INDIANA, 46761

SCHRADER
 Real Estate and Auction Company, Inc.

800-451-2709 • SchraderAuction.com for Bidding



**Timed
Online Only**

Grubaugh Retirement Farm Equipment

LaGrange County, IN

AUCTION

Go to **SchraderAuction.com**
for bidding details
and follow directions to
bidding site.

Bidding Ends: Thursday, September 24 at 1pm



INSPECTION & EQUIPMENT PICK UP LOCATION:

Equipment will be located at **105 S 500 E, LAGRANGE INDIANA, 46761**

INSPECTION DATES: Tuesday, September 8th and Friday, September 11th • 12-5pm or by Appointment

PICK UP DATES:

Day of Auction until 6pm • Friday, September 25th and Saturday, September 26th - 8am-6pm

By appointment after September 26th. Loader on site to load equipment.

TRACTORS

- **1993 John Deere 7800 MFWD tractor**, power quad, RH door, 2 remotes, QH, fenders, 420/85-28 front & 18.4-42 rear radial tires, front weights, foot pedal throttle, 5475 hrs., #RW7800H001069 • **1996 John Deere 7710 MFWD**, power quad, RH door, fenders, QH, 3 remotes, 380/85-30 fronts & 18.4-42 rears radials, front weights, 10 bolt hubs, no duals, 3972 hrs., new batteries, #RW7710H001947 (purchased new by the Grubaugh's) • **18" x 42" 10 bolt rims only**, no tires

COMBINE AND HEADS

- **1982 IH 1420 combine**, electric hydra controls, Firestone 23.1-26 tires like new, 4235 hrs, #17402186005853 (purchased new by the Grubaugh's, very nice hard to find machine) • **IH 820 15' grain head**, good poly, hydra reel height, stone guard, 1480103U040244, good • **IH 843 4 row 30" corn head**, updated with water pump bearings

FORD PICKUP • YAMAHA 4 WHEELER

- **1981 Ford F250 auto** 351 V8 gas, cushion bumper • **Yamaha Timber Wolf 4 wheeler** electric start, reverse

JOHN DEERE 1760 PLANTER AND TILLAGE EQUIPMENT

- **1997 John Deere 1760 8 row 30" front fold planter**, row cleaners, double disc fertilizer openers, (2) 150 gallon poly tanks, ground drive fertilizer pump and ground seed drive, insecticide, HD down pressure springs, markers, John Deere 250 monitor, #HO1760R675660 • **Krause 3950 rock flex 19' disc**, 7 1/2" spacing, rear hitch with hyd outlets, blades are 19 1/2 front 20 1/2 rear, 3951 NR #1299 • **Brillion X fold 23' crow foot packer**, tandem wheels • **Brillion X fold 20' solid packer**, scrapers, tandem wheels • **Brillion 8 row danish tine** folding row crop cultivator with guage wheels • **Brillion 4 row danish tine** cultivator • **Unverferth Zone Builder 3pt**, 4 shank, spring reset shanks, shank protectors, A38980149

WAGONS

- **(2) Killbros 350 gravity wagon** on Killbros 1072 10 ton gear with 11L-15 tires, with wood extentions • **Killbros 350 gravity wagon** on IH 335 gear 11L-15 tires • **(3) Killbros 350 gravity wagon** on Killbros 1072 10 ton gear with 20" tires, with metal extentions • **Killbros 350 on Farmers Pride gear** with J & M 15' brush auger, Auger Mate hydra power unit with Briggs and Stratton Intek 8 hp and tarp

GRAIN BINS AND AUGERS

NOTE: For Bin Information or to set up an appointment to inspect grain bins call Auction Manager, Robert Mishler 260-336-9750. **NOTE:** Grain Bins are not located at same location as equipment.

Bin Removal Date: Tuesday, June 1, 2021.

- **Brock 24' 7 ring bin** with full air floor, 8" horizontal unloading auger with farm fans U1028B-1LP heater, DMC Calco-U-Dri continuous flow system, grain spreader and micro switches, stir-ator, spiral steps • **Brock 24' 7 ring**, 8" horizontal unloading auger with electric 3 hp 1 ph motor, full air floor, single screw stir-ator, grain spreader, with dryer fan. **NOTE: fan works burner does not work** • **GSI 24' 7 1/2 rings**, air fan, full air floor, grain spreader, 6" horizontal auger with electric motor • **35' 6" transfer auger** 7 1/2 hp, 1 ph • **30' 8" top cross auger**, 3hp 1 ph • **Hutchinson 33'x6" transport auger**, 5 hp 1 phase motor, enclosed gear box (microswitch control) 1005124 • **Hutchinson 6" x28' transport auger** with 540 pto drive • **Hutchinson 8" x61' transport auger** with pto 540 drive, enclosed oil bath top end drive

If you want to Bid & don't have the Internet? Not a problem! Please call Robert Mishler, 260-336-9750

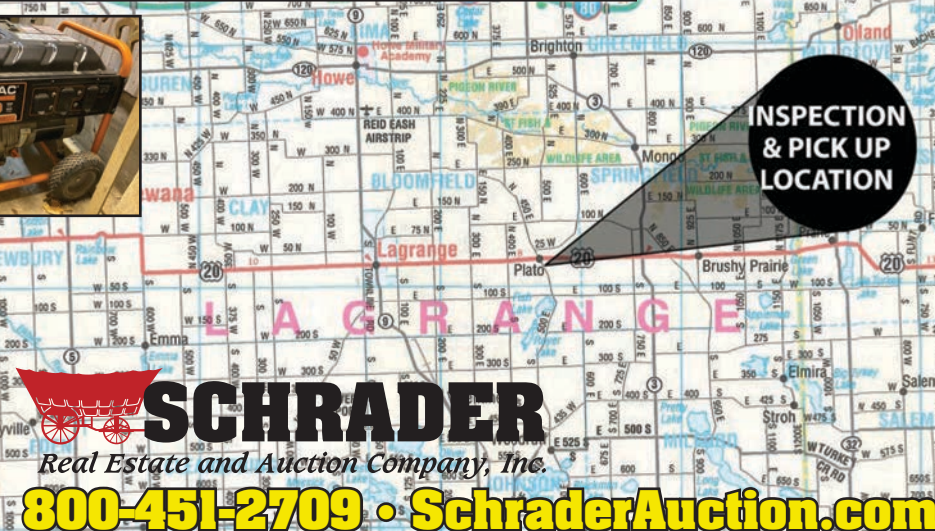
JOHN DEERE 2018 MOWER • BACKHOE • JOHN DEERE 115 BLADE • MISC EQUIPMENT

- **John Deere 2018 20' batwing rotary mower**, small 1000 rpm pto, full chains front and back, airplane tires, low use no dents on the deck • **John Deere 115 9' 3pt 8 way blade**, hydra angle and tilt, like new • **ARPS 730 3 pt. backhoe** 22" and 12" buckets • **6' 3 pt. yard rake** • **1000 gal. LP tank** • **Mittler Oxy acetyline tanks and torch set** • **3 pt. boom** • **old yellow kid's wagon** • **hydra cylinders** • **brush puller** • **6 bolt wagon tires** • **(8) JD 47 kg weights** • **110 gal. fuel tank** and 12V pump • **Y pipe** • **old front tine tiller** • **cement mixer**



AUCTIONEER'S NOTE: Bob has been farming all his life in northeast Lagrange County, he farmed with his father until his passing in 1978, he continued the farming operation himself until this year. Bob has now decided to retire and has rented out his farm and will sell his full line of farm equipment that has always had meticulous care. Bob and Bonnie requested that we move the equipment to another farm for better visibility.

SELLERS: GRUBAUGH FARMS • BOB & BONNIE GRUBAUGH
AUCTION MANAGER: Robert Mishler, 260-336-9750, call or text



SCHRADER
Real Estate and Auction Company, Inc.

800-451-2709 • SchraderAuction.com