

Oklahoma LAND AUCTION

240± acres
Tuesday
December 14
 Starting at 5:30pm • Online Bidding Available

240± acres
 with Multiple Homes
 Offered in 7 Tracts

Oklahoma LAND AUCTION
 Custer & Roger Mills Counties

Tuesday
December 14
 Starting at 5:30pm • Online Bidding Available
 Held at Elk City Convention Center (West Room), OK

Excellent Pasture
 Good Perimeter Fencing
 2 Homes – Good Rentals or Ranch Houses
 Numerous Potential Building Sites
 Multiple Ponds



Oklahoma LAND AUCTION
 Custer & Roger Mills Counties

240± acres
 with Multiple Homes
 Offered in 7 Tracts

Tuesday
December 14
 Starting at 5:30pm • Online Bidding Available
 Held at Elk City Convention Center (West Room), OK

Excellent Pasture
 Good Perimeter Fencing
 2 Homes – Good Rentals or Ranch Houses
 Numerous Potential Building Sites
 Multiple Ponds

SCHRADER
 Real Estate and Auction Company, Inc.
 101 N Main St, Stillwater, OK 74075
 CORPORATE OFFICE: PO Box 508
 950 N Liberty Dr • Columbia City, IN 46725
 800.451.2709 • 260.244.7606

Auction Manager:
 BRENT WELLINGS • 405.332.5505
 brent@schraderauction.com • LIC#158091

DECEMBER						
Sun	Mon	TUE	Wed	Thu	Fri	Sat
			1	2	3	4
5	6	7	8	9	10	11
12	13	14	15	16	17	18
19	20	21	22	23	24	25
26	27	28	29	30	31	

Online Bidding Available
 You may bid online during the auction at www.schraderauction.com. You must be registered One Week in Advance of the Auction to bid online. For online bidding information, call Schrader Auction Co.

Follow Us and Get Our Schrader iOS App:

405.332.5505
SchraderAuction.com



800.451.2709 • SchraderAuction.com

Oklahoma LAND AUCTION

Custer & Roger Mills Counties

Tuesday December 14

Starting at 5:30pm • Online Bidding Available

Auction Location:

Elk City Convention Center, West Room
1016 Airport Industrial Rd
Elk City, OK 73648

An exciting opportunity

to purchase quality pasture, homes and potential building sites in Custer and Roger Mills Counties. The auction consists of 3 separate properties, all near the community of Carpenter, Oklahoma. Tracts 1 through 4 offer some stunning views of the surrounding landscape, have good perimeter fencing and offer frontage on county roads. Tracts 5 and 6 make up 160± acres total, including: a great pond, good fences, county road frontage and a 1,080 square foot, 3 bed, 1 bath ranch house in good repair. Tract 7 features a 2,163 square foot, 2 bed, 2 bath, 2 living area home located along Highway 34! Buyers may bid on any individual tract or combination of tracts that best fit their needs.

240± acres

with Multiple Homes
Offered in 7 Tracts

TRACT 1: 10± acres with an outstanding view of the landscape to north, includes excellent set of working pens with 3 small sheds, road frontage on 2 sides, excellent potential building site.

TRACT 2: 20± acres with county road frontage and another excellent view.

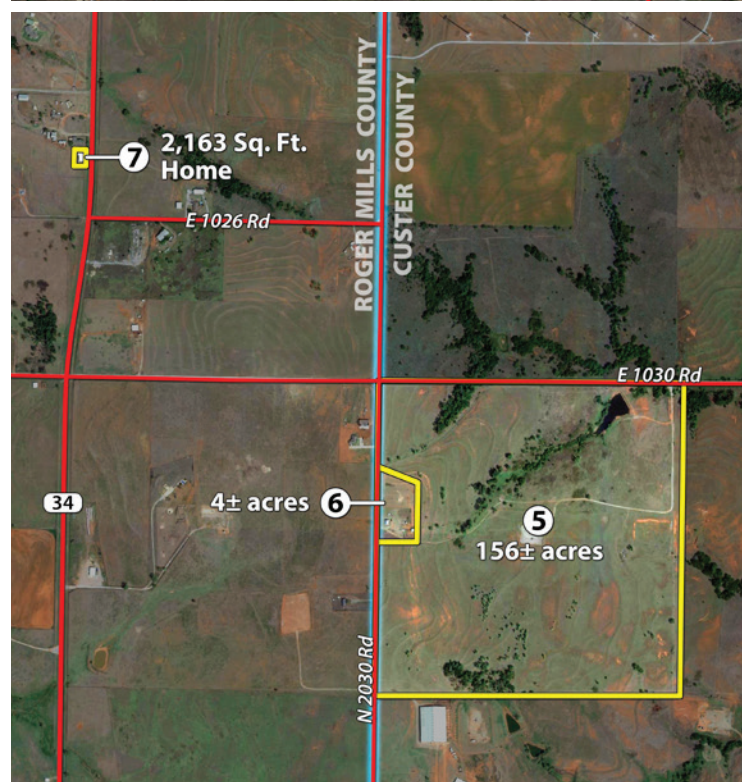
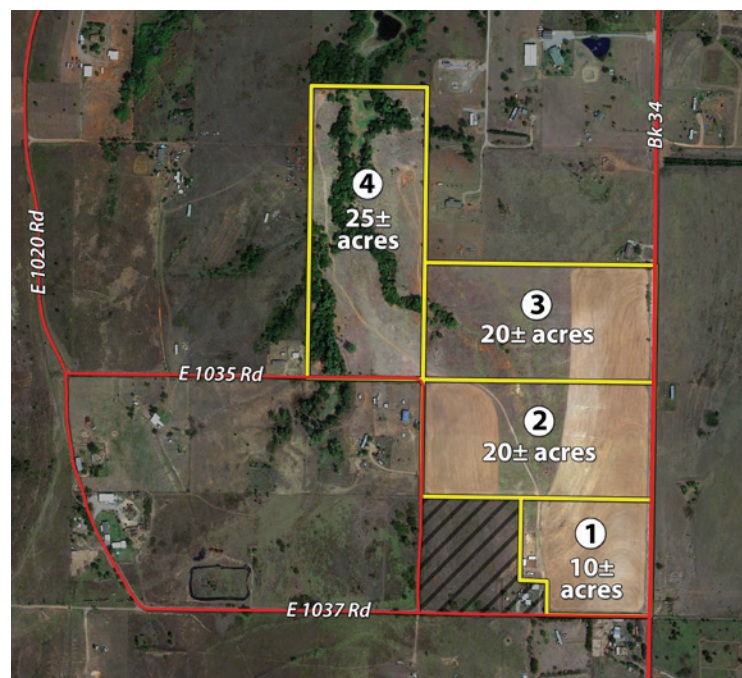
TRACT 3: 20± acres with county road frontage and a small pond on the west side!

TRACT 4: 25± acres with an excellent combination of open pasture and big trees! Hunting potential here and lots of places to potentially build.

TRACT 5: 156± acres which is an excellent combination of open pasture, trees for shade and a very nice pond. This tract is fully fenced, with perimeter fence in excellent shape.

TRACT 6: 4± acres which include the 1,080 square foot, 3 bed, 1 bath ranch home. Property is cross fenced with a large trap, small set of corrals and shed.

TRACT 7: 2,163 Sq. Ft. Home on 0.32± acre lot in an excellent location along Highway 34, includes 2,163 square foot ranch home, 2 bed, 2 bath, 2 large living areas and massive utility room! Also includes a circle driveway and covered carport with large storage area. Back yard is fully privacy fenced and there is even a local mule deer which has called the property home! House is in good repair, clean and ready for new owners.



TRACTS 1-4
Southeast View



TRACT 1



TRACT 2



TRACT 3



TRACT 4



TRACT 5



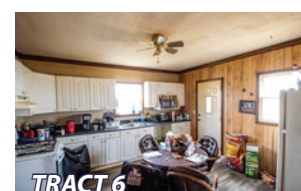
TRACT 6



TRACT 1



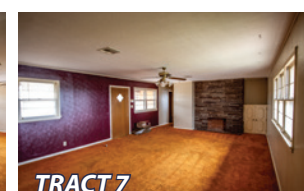
TRACT 7



TRACT 6



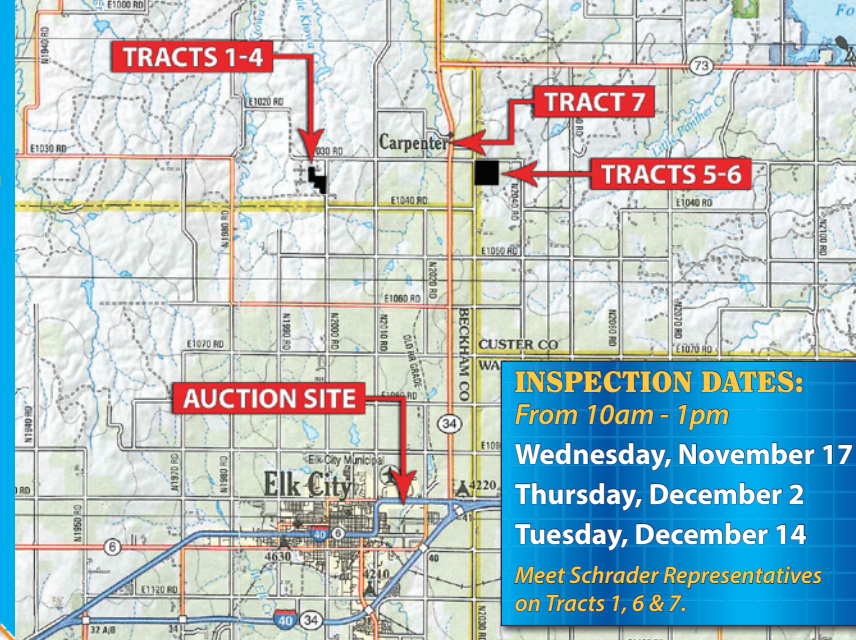
TRACT 7



TRACT 7



TRACT 7



INSPECTION DATES:

From 10am - 1pm

Wednesday, November 17

Thursday, December 2

Tuesday, December 14

Meet Schrader Representatives
on Tracts 1, 6 & 7.

Auction Terms and Conditions:

PROCEDURE: Tracts 1 through 7 will be offered in individual tracts, in any combination of these tracts, or as a total unit per auction date and time. There will be open bidding on all tracts and combinations during the auctions as determined by the Auctioneer. Bids on tracts, tract combinations and the total property may compete. The property will be sold in the manner resulting in the highest total sale price.

BUYER'S PREMIUM: The contract purchase price will include a Buyer's Premium equal to 4% of the bid amount.

DOWN PAYMENT: 10% of the total contract purchase price will be due as a down payment on the day of auction, with the balance due in cash at closing. The down payment may be made in the form of cashier's check, personal check, or corporate check. YOUR BIDDING IS NOT CONDITIONAL UPON FINANCING, SO BE SURE YOU HAVE ARRANGED FINANCING, IF NEEDED, AND ARE CAPABLE OF PAYING CASH AT CLOSING.

APPROVAL OF BID PRICES: All successful bidders will be required to enter into purchase agreements at the auction site immediately following the close of the auction. The auction bids are subject to the acceptance or rejection by the Seller.

DEED: Seller shall be obligated only to convey a merchantable title by Special Warranty Deed.

EVIDENCE OF TITLE: Seller agrees to make available to bidder a preliminary title insurance commitment to review prior to auction. The cost of title insurance, if the buyer(s) elects to purchase the title insurance policy, will be the responsibility of the buyer(s). Seller agrees to provide merchantable title to the property subject to matters of record, general conditions of title, and similar related matters. All tracts sold "AS-IS".

CLOSING: The closing shall take place 45 days after the auction or as soon thereafter as applicable closing documents are completed by Seller.

POSSESSION: Possession shall be at closing.

REAL ESTATE TAXES: Real Estate taxes shall be prorated to the date of closing.

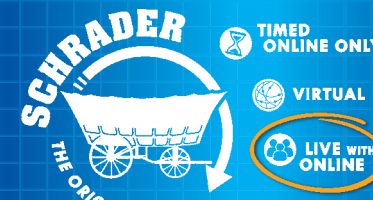
MINERALS: Seller specifically excepts and reserves all minerals, including without limitation, oil, gas, coal, coalbed methane, and all other hydrocarbons, lignite, and all metallic minerals, etc., if any, associated with the referenced real estate, and the term "Property" shall not include any mineral rights.

ACREAGE AND TRACTS: All acreages, dimensions and square footages are approximate and have been estimated based on current legal descriptions, property tax records and/or aerial photos. Any corrections, additions, or deletions will be made known prior to the auction.

AGENCY: Schrader Real Estate and Auction Company, Inc. and their representatives are exclusive agents of the Seller.

DISCLAIMER AND ABSENCE OF WARRANTIES: All information contained in this brochure and all related materials are subject to the terms and conditions outlined in the Purchase Agreement. The property is being sold on an "AS IS, WHERE IS" basis, and no warranty or representation, either expressed or implied, concerning the property is made by the Seller or the Auction Company. All sketches and dimensions in the brochure are approximate. Each potential bidder is responsible for conducting his or her own independent inspections, investigations, inquiries, and due diligence concerning the property. The information contained in this brochure is subject to verification by all parties relying on it. No liability for its accuracy, errors, or omissions is assumed by the Seller or the Auction Company. Conduct of the auction and increments of bidding are at the direction and discretion of the Auctioneer. The Seller and Selling Agents reserve the right to preclude any person from bidding if there is any question as to the person's credentials, fitness, etc. All decisions of the Auctioneer are final. ANY ANNOUNCEMENTS MADE THE DAY OF THE SALE TAKE PRECEDENCE OVER PRINTED MATERIAL OR ANY OTHER ORAL STATEMENTS MADE.

NEW DATE, CORRECTIONS AND CHANGES: Please arrive prior to scheduled auction time to inspect any changes or additions to the property information.



405.332.5505 AUCTIONS
SchraderAuction.com

AUCTION MANAGER | BRENT WELLINGS • 405.332.5505 • brent@schraderauction.com