

# *For Sale* **Nick Mumm DAIRY FARM**

11835 RAMSEY ROAD, CASSVILLE, WI



**Listing Price:** *\$625,000*



- The Farm is located 6 miles from Cassville and 28 miles from Prairie du Chien, WI.
- The Farm site has 210 free stall barn 118'x248' and an addition was built in 2017, Double 10 Parallel Parlor, built in 2009.
- 3,000 gallon Bulk Tank, Commodity shed 32x64, four bays, 6,000 bushel drying bin.
- 1.5 million gallon total cement with ramp manure pit, six months storage.
- Sellers will rent buyers additional land or supply feed to buyers.
- Farm has 3 phase power with a portable tractor generator.
- Dairy is well maintained and ready for cows.



*The information on this sheet is subject to verification and no liability for errors or omissions is assumed by the Schrader Agency.*

*Mumm • DC04G-WI*



**SCHRADER**  
Real Estate and Auction Company, Inc.

**800-451-2709**  
**260-244-7606**

*Listing Agent:*  
DARRELL CRAPP • [darrell@schraderauction.com](mailto:darrell@schraderauction.com)  
**608-558-6832**

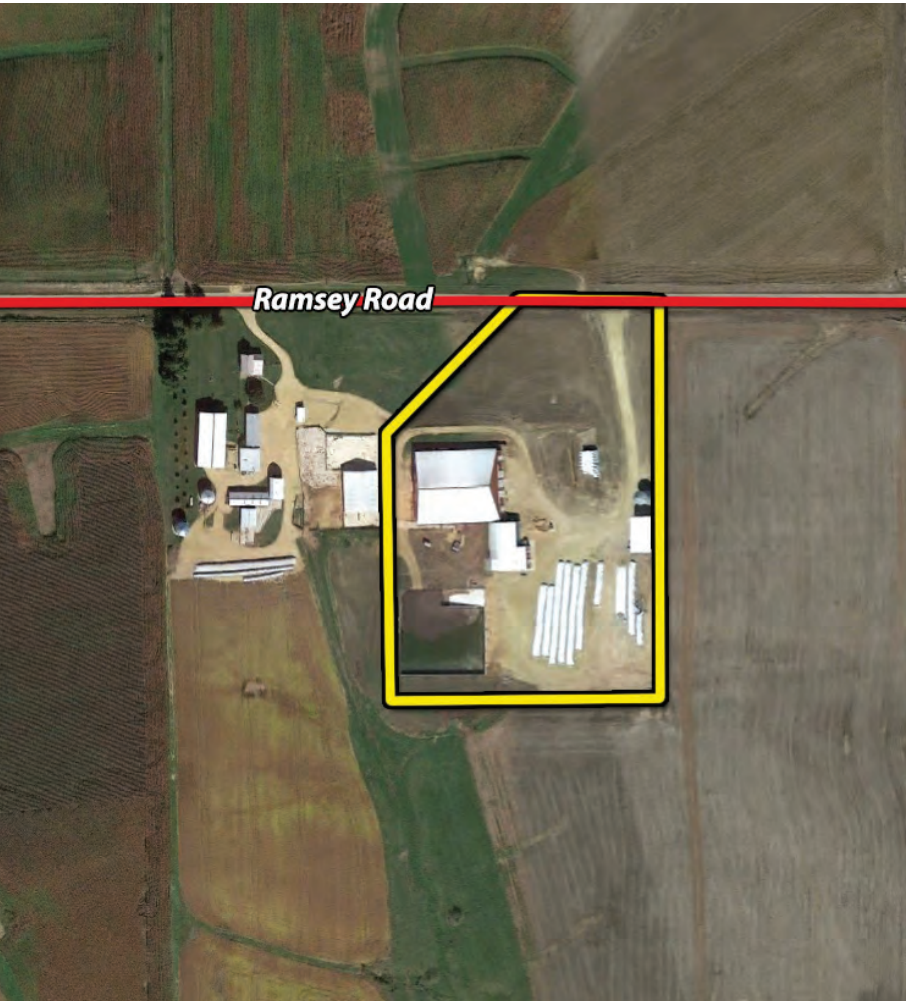


# *For Sale* Nick Mumm **DAIRY FARM**

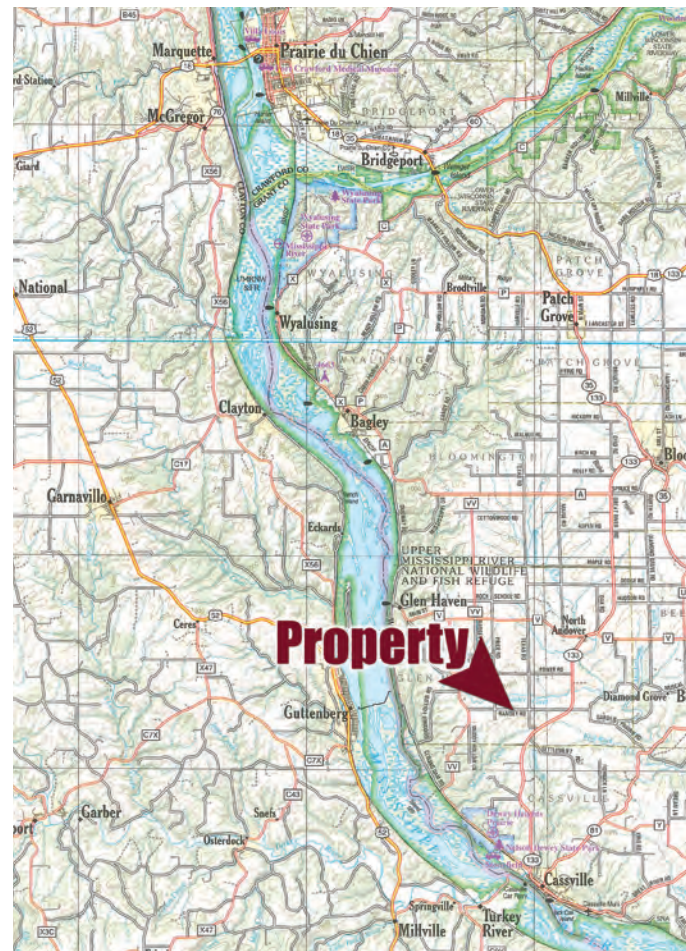
11835 RAMSEY ROAD, CASSVILLE, WI

*Listing Price: \$625,000*

AERIAL MAP



LOCATION MAP



*The information on this sheet is subject to verification and no liability for errors or omissions is assumed by the Schrader Agency.*

*Mumm • DC04G-WI*

 **SCHRADER**  
Real Estate and Auction Company, Inc.

**800-451-2709**  
**260-244-7606**

*Listing Agent:*  
DARRELL CRAPP • [darrell@schraderauction.com](mailto:darrell@schraderauction.com)  
**608-558-6832**