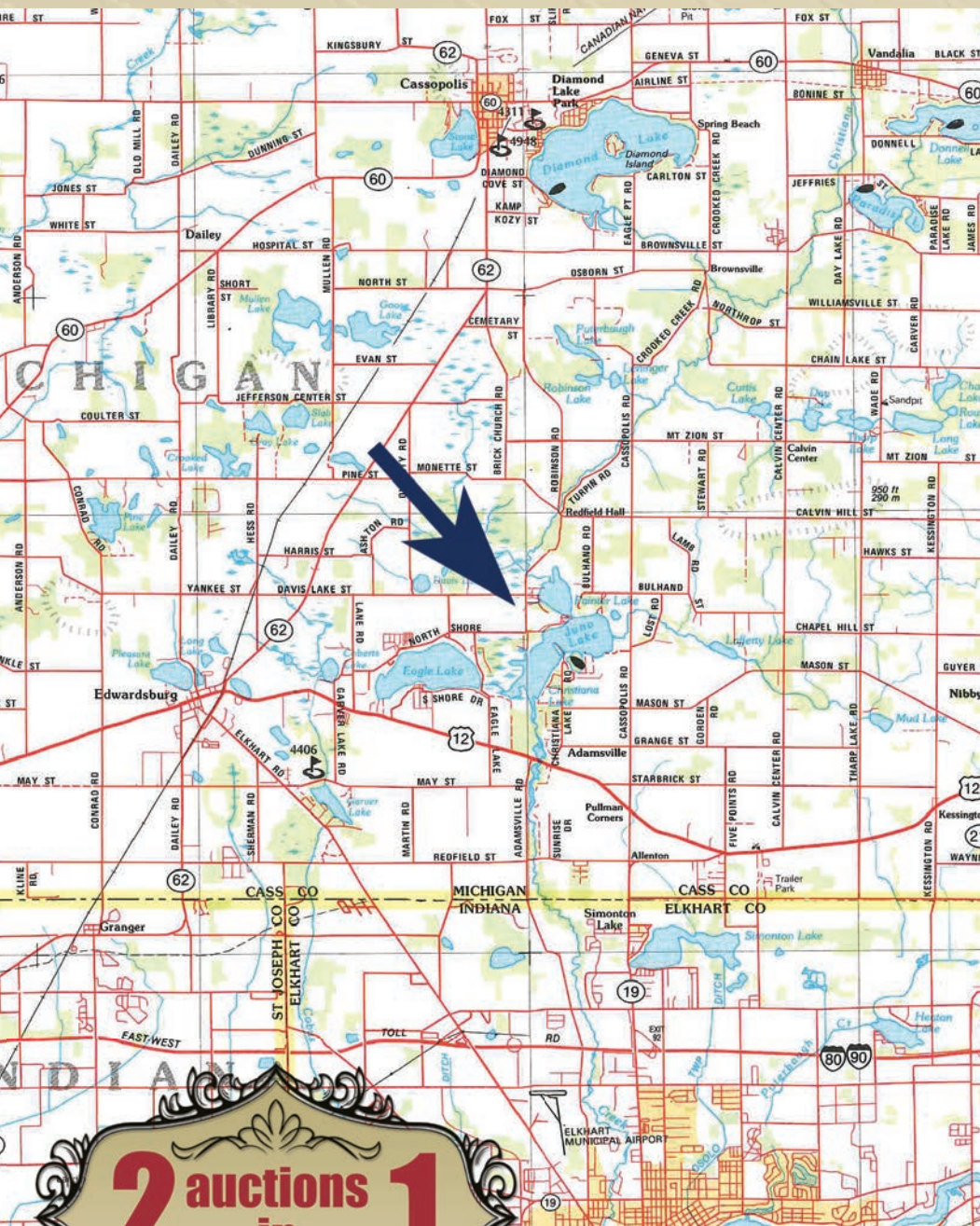


Edwardsburg, Michigan
7.5 miles from I 80-90 at Elkhart, Indiana Exit

SOUTHWESTERN MICHIGAN • CASS COUNTY



2 auctions in 1
held at the Kirkdorfer Farms

AUCTION LOCATION:
67722 North Shore Drive
Edwardsburg, MI 49112

AUCTION DIRECTIONS: East of Edwardsburg OR West of Adamsville on US 12 to Eagle Lake Road, go north past Eagle Lake to North Shore Drive, go east to sale site.

AUCTIONEERS NOTE: If you are looking Excellent Well Maintained Equipment, don't miss this sale. Off-Road Parking. Very little Miscellaneous — be on TIME.

ONLINE BIDDING
You may bid online during the auction at www.schraderauction.com. You must register one week in advance of the auction to bid online. For information on registering for online bidding, call Schrader Auction Company at 800-451-2709.



2 auctions in 1
held at the Kirkdorfer Farms

SCHRADER
Real Estate and Auction Company, Inc.
950 N. Liberty Drive
Columbia City, IN 46725
260-244-7606 • 800-451-2709

Auction Managers:
Ted Boyer 574-215-8100, Ed Boyer 574-215-7653
ed@boyerpig.net
6501225192

FEBRUARY 2016

Sat	6	13	20	27
Fri	5	12	19	26
Thu	4	11	18	25
Wed	3	10	17	24
Tue	2	9	16	23
Mon	1	8	15	22
Sun		7	14	21
			28	

Follow Us:

TERMS & CONDITIONS: Cash or check with proper ID. Announcements made day of auction take precedence over any printed material. Not responsible for accidents.

800-451-2709
www.SchraderAuction.com



Edwardsburg, Michigan

- TRACTORS
- TILLAGE
- HARVEST
- PLANTING & CROP CARE
- TRUCKS & IRRIGATION
- FARM RELATED



2 auctions in 1
held at the Kirkdorfer Farms

Kirkdorfer Farms
High Quality Farms
Farm Equipment Auction

Wednesday, February 3 • 10 AM



ONLINE BIDDING AVAILABLE

SCHRADER
Real Estate and Auction Company, Inc.
www.SchraderAuction.com



Kirkdorfer Farms / High Quality Farms
Farm Equipment Auction
WEDNESDAY, FEBRUARY 3 • 10:00 AM

TRACTORS

- **2010 JD 9530T**, 2,974± hrs, 36" tracks, 5 remotes, adj. hitch, 26 ftr wts, ftr track wts, star fire 3000, power shift, deluxe cab & lights, SN#1RW9530TEAP912320
- **2010 JD 9530T**, 3,286 hrs., 36" tracks, 5 remotes, adj. hitch, 26 ftr wts, ftr idler wts inside & out, Star Fire 3000, power shift, deluxe cab & lights kit, SN#1R-W9530TCOP912326
- **2007 JD 8330**, 4,717 hrs., Powershift, ILS front, 5 remotes, big 1000 pto, 3 pt, quick hitch, 480/80R50 duals, 380/80R38 fronts, 8 ftr wts, tall wt bracket, GPS auto steer ready, updated light package, active seat, SN#R-W8330P014713
- **JD 8400 MFWD**, power shift, 46" wheels, 20 f. wts., heavy inside wt., 4 remote, 6164 hrs., SN#24936
- **NH TM175 MFWD tractor**, 1,800 hrs., 1000 pto, good rubber
- **Case IH MX180**, 3,035 hrs
- **Ford 8630 MFWD**, power shift, 4,284 hrs
- **1979 Case 2090**, 4,040 hrs., 504 diesel, power shift, 2 remotes, 3 pt, 540 pto, 18.4-38 w/hub mount duals, SN#10183679
- **JD 430 diesel garden tractor**, hydro., 60" mower deck
- **JD 8000 Series 18"** rubber tracks, 50% to 60% remaining tread

TILLAGE

- **2014 Kuhn Krause 8000** Excelerator vertical till, 40' cushion gang, hydraulic adjust 0% to 5% front & back, leveling, gauge wheels, tri fold, 6 lift axles,

TRACTORS

- SN#8000-40-3007, new front disc blades being installed prior to auction
- **2013 Kuhn Krause 8000** Excelerator vertical tillage, 40' cushion gang, hydraulic adj. front & rear 0% to 5%, leveling attachment, gauge wheels, tri fold, 6 lift axles, SN#8000-40-1991
- **2013 JD 2100 9 Shank Ripper**, cushion cutters, cushion knives, soil management system, pull type, wing fold, light kit, SN#750129
- **2010 Landoll 2130-19 Disc Chisel w/crumbler**, 19 shank, cushion gang, hydraulic adj. disc depth, hydraulic fold, 4 lift axles SN#21C1100434
- **JD 980 Field Cultivator**, 50', 4 walking beam lift axles, tri fold, rear hitch, gauge wheels
- **Unverferth 1235 Rolling Harrow**, twin basket spike attach., front fold, four axle lift, light kit
- **Wil-Rich 2900 Flex 10** bottom on land plow, spring reset bottoms & cutters
- **JD 110 wheel disk**, 12'

HARVEST

- **2012 JD S680 Combine**, 1,369 eng. hrs., 947 sep. hrs., Green Star 3, contour master, 650/85R38 deep tread duals, 750/65R26 rear tires, folding bin extensions, buddy seat, long auger, deluxe cab & light kit, SN#747785
- **2014 Geringhoff Rota Disc Elite XL**, 12 row folding corn head, only used one harvest
- **JD 640FD 40'** Hydrflex draper grain head, poly side,

TRACTORS

- 2 sets of snouts (long & short), SN#766317
- **2014 Unverferth 542** road-runner head cart, pivot steer tandem front axle, tandem rear axle, front fenders, SN#A54-460-100
- **2014 Unverferth Roadrunner** head cart, tandem axle, tandem pivot steer
- **2010 Brent 1082 Grain Cart**, Scales, 20" auger, locking roll tarp, camera, light kit, 900/60-32 floatation tires, 1000 pto, SN#B25-350-144
- **J&M Grain Cart**, 500 bu., 23.1-26 tires, roll tarp, ftr corner auger, pto, light kit, new bearings
- **Feterl 12" x 72'** auger w/16' swing auger, pto drive
- **Feterl 1062 transport auger**, 10" x 62', w/ 16' swing auger, hyd lift, pto drive, new flighting
- **Mayrath 8" x 56'** transport auger, 10 hp elect. motor, hyd. lift
- **Hutchinson transport auger**, 8x72, pto, top drive, hyd lift
- **Hutchinson truck load out auger**, 10" x 11' hyd drive,
- **JD 428 double chain transport elevator**, pto. drive

PLANTING & CROP CARE

- **2001 Miller Nitro 200HT**, 5,714 hrs on the machine, row crop sprayer, 90' boom, quick attach, 1200 gal. SS tank, 4x4, foamer, aux. hyd, 380/90R46 tires, 5.9 Cummins diesel turbo w/2000 hrs in service
- **JD 1535** no till drills w/ Houck Roto Caddy hitch 30', 15" spacing, Yetter markers, seed firmers, monitor
- **JD 750 No Till Drill**, 7.5" spacing,

TRACTORS

- SI belt meters, grass seed box, yetter markers, caster front wheels, light kit
- **JD 7000 6 x 30** Planter
- **JD 845 cultivator**, 16 row, hyd. wing fold, 3 pt, danish tines, jolly cranks, plumbed for liq. fert., gauge wheels
- **JD 400 Rotary Hoe**, 30' wing fold, 3 pt, gauge wheels
- **Sitrex QR10 hay rake**, 10 wheel V rake, hydraulic fold, used on only 35 acres!
- **JD Windrower w/sickle bar**, item is functional & in the final stage prior to being painted
- **500 gal. Snyder saddle tanks** w/ Bestway brackets, was on JD 8000 series

TRUCKS & IRRIGATION

- **2010 Ford F350** dually, 4x4, crew cab, diesel, 9' service bed, 135K
- **2002 Ford F250 Super Duty**, Power Stroke diesel V8, 4x4, 4 dr, service truck, 203,425 mi., AC, CD, Powerseat, auto trans., Stahl service body, 200 gal. fuel tank w/elec. pump, non-potable water tank
- **1975 Ford L9000**, 270 Cummins turbo diesel, 7 spd Ford trans., 81,115 mi., twin screw, 20' grain bed, hyd., lift, rear barn doors w/ grain chute, roll tarp
- **2013, 20+5 tandem axle**, tandem tire trailer, 20,000 lb capacity
- **2002 OCMIS 125R4/2** hard hose irrigation traveler, auto well shut off, pto purge, SN#E230104
- **JD Power unit w/clutch**, model 4045TF150, 1,683 hrs., 4045 diesel 4 cyl., turbo, NACD power

FARM RELATED

- take off, irrigation set up, SN#-PE4045T622386
- **Lull 644 Highlander II**, appx. 40' reach, 4x4, Perkins diesel
- **Farmstar 250 spin spreader**
- **Rockford clutch w/ shaft** for power units
- **Twin disk clutch w/ shaft** for power units
- **Marathon 20 hp. electric motor w/ 3"x2"** cent pump
- **JD bagger** for JD 400 Series GT
- **JD snow blower** for JD 400 Series GT
- **JD front wts. & chains** for JD 400 series GT
- **Seed Vac air conveyor**, w/ 2 container platform
- **Seed Vac air conveyor**, GW mount, Honda engine
- **32-Minnie** hoppers for JD 1790 planters
- **2-JD 3 bu.** seed hoppers
- **JD bottom sieve**, long tooth, for JD 9860 combine
- **Navagator Guidance Sys.**, 3pt.
- **Miller AEAD-200LE welder** Gen Set, Onan 18XSL engine, on trailer
- **Band saw**, horizontal

FARM RELATED

- **HD hyd. press**, elec. power res.
- **HPW 1530 Steam Jenny**, pressure washer
- **48" HD ditch bucket**
- **12' Tandem trailer**, ramps, bumper hitch
- **Leland 2 place snowmobile trailer**, tilt
- **JD walk behind snow blower**
- **KW Aero Cab sleeper unit**, side & front entry
- **Pony Pack power unit** for parked trucks
- **Alum Headache rack**
- **L shaped pickup fuel tank**, 110 gal.
- **Fuel tank**, w/ HD pump, 100 gal.
- **Round fuel tank**, w/ pump
- **HD Running gears**
- **Running gears**
- **Heavy Elk & Deer fence**, approx. 12' high, w/ posts & gates
- **40' HD, alum**, 3 stage ext. Ladder
- **Blue plastic barrels**, several 55&30 gal.
- **Miscellaneous bolt bins**, misc. parts & supplies

Inspection Dates:
Sat., January, 30 & Tues., February 2
10 AM - 2 PM

OWNERS: KIRKDORFER FARMS, Edwardsburg, MI, Cameron Mendenhall, 269.876.0816; HIGH QUALITY FARMS, Decatur, MI, David High, 269.655.5148; and others

SALE MANAGERS: Ted Boyer 574.215.8100, Ed Boyer 574.215.7653 ed@boyerpig.net

SCHRADER 800.451.2709
 Real Estate and Auction Company, Inc. **SchraderAuction.com**

