



PO Box 508 • 950 N Liberty Dr  
Columbia City, IN 46725  
800.451.2709 • 260.244.7606



RP-3155, RP-7186, RC19-858

The auction will be conducted by Arden Schrader  
as the managing principal auctioneer.

### Auction Manager:

Eric Ott - 260.413.0787

Brad Horrall - 812.890.8255

SEPTEMBER	Sun	Mon	Tue	Wed	Thu	FRI	Sat
	1	2	3	4	5	6	7
	8	9	10	11	12	13	14
	15	16	17	18	19	20	21
	22	23	24	25	26	27	28
	29	30					

### Live Interent Bidding Available

Visit [SchraderAuction.com](http://SchraderAuction.com) or call 800.451.2709 for details.

Follow Us and Get Our New Schrader iOS App:



**800.451.2709**  
**SchraderAuction.com**

# Absolute EQUIPMENT AUCTION

Mercer County, KY

4 Miles North of Harrodsburg • 20 Miles Southwest of Lexington

- Tractors / Sprayers
- Hay Equipment
- Trailers
- Cattle Equipment
- Mowers
- Farm Related Equipment
- Hay & Straw

*Friday*  
**SEPTEMBER 6** AT 10:00AM

held at 1083 Curry Pike, Harrodsburg, KY



# Absolute EQUIPMENT AUCTION

Mercer County, KY

4 Miles North of Harrodsburg • 20 Miles Southwest of Lexington

- Tractors / Sprayers
- Hay Equipment
- Trailers
- Cattle Equipment
- Mowers
- Farm Related Equipment
- Hay & Straw



*Friday*  
**SEPTEMBER 6** AT 10:00AM

Live Internet Bidding  held at 1083 Curry Pike, Harrodsburg, KY





# Absolute EQUIPMENT AUCTION

Mercer County, KY

*Friday* **SEPTEMBER 6 AT 10:00AM**

Live Internet Bidding



held at 1083 Curry Pike,  
Harrodsburg, KY

4 Miles North of Harrodsburg • 20 Miles Southwest of Lexington



**TRACTORS & SPRAYER:** JD 7230 Premium, MFWD, w/JD 741 loader, 3<sup>rd</sup> function, 7' bucket, power quad, left hand reverser, 3 remotes, 540/1000 pto, 3pt, rear 3pt controls, 2 sets of wheel weights, 18.4R38 rears, 14.9R28 fronts, 8191 hours \*RW7230H005250\*; **JD 5520, MFWD**, open station, w/JD 563 loader, 3<sup>rd</sup> function, 6' bucket, sync shuttle shift, 2 remotes, 540 pto, 3pt, 2 sets of wheel weights, folding ROPS, 18.4-30 rears, 12.4-24 fronts, 6774 hours \*LV5520S252635\*; **Hahn 300 Hi Boy Sprayer**, w/newer motor, 200 gallon tank

**HAY EQUIPMENT:** JD 956 MoCo discbine, 14', 2pt, small 1000 pto, rubber rolls \*1E00956REGG420091\*; **2014 Vicon Anex 714T-EVO** twin rotor rake, pull type, walking tandems, 540 pto, 10' rotors \*VF69626949\*; **JD 348 square baler**, 540 pto, hydraulic pickup & tongue & tension, twine, 5' pickup, preservation applicator \*E00348T350969\*; **Hoelscher square bale** accumulators, 21 bales; **Kuhn 21 bale grapple**, JD 600/700 series loader hookup; **McHale 991B round bale wrapper**, pull type, load arm, hydraulic drive, monitor; **Work Saver round bale grabber**, JD 600/700 series loader hookup; **(9) flat rack hay wagons**, 18-20' long, heavy native beds; **(2) Work Saver round bale unrollers**, 3pt, hydraulic drive; **Little Giant Elevator**, double chain, 32', 540 pto

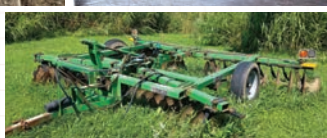
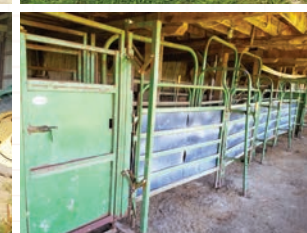
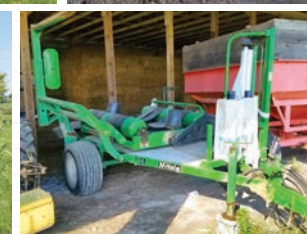
**TRAILERS:** **2014 Elite gooseneck flat bed trailer**, 27' + 5', Flex Control, black, dual tandem, chain box, dual jacks, 2 wedge ramps, pop up center beaver tail \*1E9BF322XES230406\*; **2008 Elite gooseneck flat bed trailer**, 27' + 5', red, dual tandem, chain box, dual jacks, 3 wedge ramps \*1E9BF32239S230074\*; **Sure-Pull gooseneck flat bed trailer**, 32' straight deck, black, dual tandem, chain box, dual jacks; **1999 Pro Track gooseneck flat bed trailer**, 26' straight deck, red, dual tandem, chain box, dual jacks \*51N1G2627YC001037\*; **Stainless Steel Semi water trailer**, single axle, dual wheel, air brakes, 3000 gallon, spring ride \*U44-1552\* (NO TITLE); **Title deck trailer**, single axle, dual time, 8'x14', bumper hitch, no title

**CATTLE EQUIPMENT:** **Powder River squeeze chute**, manual head gate, rear door, palpation cage, 24' adjustable alley, 180° crowding tub; **Numerous** new & used gates; **Numerous** feed bunks; **Wood fence posts**; **New Holland 355 feed grinder**, long unload auger, load auger, 540 pto, damaged tank

**MOWERS:** **JD HX20 batwing mower**, 20', 540 pto, front & rear chains, 6 tires; **Rhino 15' batwing mower**, 540 pto, front chains

**FARM RELATED EQUIPMENT:** **Frontier DH1512 disc**, 12', 19" notched front blades, 20" smooth rear blades, adjustable gang, scrapers; **JD 145 plow**, 4 bottom, semi-mount; **JD 80 planter**, 4 row wide; **Nurse trailer**, 1000 gallon poly tank, tandem axle, 3.5hp Briggs motor & pump; **1000 gallon fuel tank** on skids, w/pump; **Grove SM 42 RT** scissor lift, 42', gas; **(2) 200 bushel gravity wagons**; **West Field MK80** swing away auger, 540 pto, 8" x 42'; **Bush Hog** post hole auger, 3pt, 540 pto

**HAY & STRAW:** **2,500± small square bales**, 2<sup>nd</sup> cutting, alfalfa/orchard grass, stored inside; **(30) round bales**, 1<sup>st</sup> cutting, alfalfa/clover/orchard grass, stored inside; **(40) round bales**, 1<sup>st</sup> cutting of 2018, stored outside; **(100) round bales** of straw, from 2018, stored outside



**SELLER:** Ellis Farms

**INSPECTION DATE:** Monday, August 26 from 10:00 am - 7:00 pm

**AUCTION MANAGERS:** Eric Ott 260.413.0787 • Brad Horrall 812.890.8255

**800.451.2709 • www.SchraderAuction.com**

**TERMS:** Cash, check or credit card with valid ID. 4% convenience fee for credit cards. Announcements made the day of the auction take precedence over any printed material. Not responsible for accidents.