

**SCHRADER**  
Real Estate and Auction Company, Inc.  
See Website for more information  
SchraderAuction.com  
800-451-2709



**TUESDAY, AUGUST 11, 2020 • 10 AM**

# Virtual PRE-HARVEST EQUIPMENT AUCTION

**ONLINE/VIRTUAL BID BY PHONE / ABSENTEE BID**

- Combines • Heads • Carts • Backhoe • Telehandlers • Skidsteers • Hay and Forage Equipment
- Planting Equipment • Spraying Equipment • Tillage • Feed Truck • Mixers • Manure Spreaders
- Trucks • Trailers • Wagons • Grain Carts • Grain Bins • Grain Leg • Augers • Misc Equipment



**TUESDAY, AUGUST 11, 2020 • 10 AM**

**ONLINE/VIRTUAL BID BY PHONE / ABSENTEE BID**



**Virtual PRE-HARVEST EQUIPMENT AUCTION**

**ONLINE/VIRTUAL BID BY PHONE / ABSENTEE BID**

**SCHRADER** 800-451-2709 • SchraderAuction.com  
Real Estate and Auction Company, Inc. See Website for more information

**800-451-2709**  
**www.SchraderAuction.com**

Get our iOS App

Follow us on: YouTube

TERMS: Cash or Check w/ proper ID.  
4% convenience fee for credit cards.  
Announcements made the day of the  
auction take precedence over any printed  
material. Not responsible for accidents.

**AUCTION MANAGERS:**  
Robert Mishler, 260-336-9750  
Eric Ott, 260-413-0787

**SCHRADER**  
Real Estate and Auction Company, Inc.

SUN	2	9	16	23	30	31	25	26	27	28	29
MON	3	10	17	24	31		18	19	20	21	22
TUE	4	11	18	25			19	20	21	22	23
WED	5	12	19	26			20	21	22	23	24
THU	6	13	20	27			21	22	23	24	25
FRI	7	14	21	28			22	23	24	25	26
SAT	8	15	22	29			23	24	25	26	27
	1	8	15	22	29		24	25	26	27	28
		9	16	23	30	31	25	26	27	28	29



Equipment located at Various Places!  
Reference Our Online catalog for exact locations!





**ONLINE/VIRTUAL BID BY PHONE ABSENTEE BID**

# PRE-HARVEST EQUIPMENT AUCTION

*Virtual*

## TUESDAY, AUGUST 11, 2020 • 10 AM

Visit Website for More Photos!!

**SMALL ITEMS WILL BE IN A TIMED ONLINE ONLY AUCTION ending TUESDAY, AUGUST 11, 5:30pm • Visit [www.SchraderAuction.com](http://www.SchraderAuction.com) for details.**

**Equipment located at Various Places! Reference Our Online catalog for exact locations!**

### COMBINES • HEAD • CARTS

• **John Deere 9770 Combine**, 4x4, round bar, GreenStar Ready, bin extensions, new radiator 2 years ago, Firestone radial 520/85R42 straddle dual, rear tires 28L-26, buddy seat, 1479/977 hrs, #1H09770SCA0736699, very clean, second owner machine • **John Deere 9410 Maximizer Combine**, 4x4, Maurer Bin extension, chopper, spreader, 30.5L-32 drive tires, 18.4-26 steer tires, Brown box & ITC globe, 3714 separator, 5030 engine, a lot of maintenance work has been done since 2016 • **Case IH 2166 combine**, special rotor, rock trap, feeder house went thru 400 acres ago with new chain & drum bearings, Ag Leader yield monitor system 2 years old minus the display, 30.5L-32 drive tires, 14.9-24 steer tires, 2247 separator, 3259 engine • **John Deere 7720 Titan II Combine**, good smooth running machine, chopper, approximately 5,000 hrs, owner bought it last year to finish corn harvest from neighbor recently updated to a JD 9410, Firestone 30.5L - 32, Firestone 14.9 - 24, #H07720X601566 • **John Deere 7720 Titan II combine**, 4x4, Vittetoe chaff spreader, 30.5L-32 drive tires, 18.4-26 steer tires, 3736 hrs • **John Deere 7720 Combine**, lots of new parts over the last few years, less than 1,000 acres on concave & rasp bars, clean grain elevator & augers, machine runs very well but last fall developed a tick in the top end of the motor, owners believes hours to be around 5,000 hrs, Firestone 30.5L-32, Firestone 14.9-24, #508720 • **John**

**Deere 6620 combine**, yellow top, hydro stat, chopper, Vittetoe chaff spreader 28L-26 drive tires, 11.00-16 steer tires, 2699 hrs • **1981 International 1440 axial-flow combine**, one owner, newer chopper, electric over hydraulic, 2717 hrs, reason for selling farmer retirement, Firestone 28L-26, Firestone 11.00-16, #1680230U021275 • **Case IH 1660 combine**, chopper, double spreader, field ready, yield & grain loss monitors, Firestone 30.5L-32, Firestone 8.4-16.1, #JJC0036434 • **John Deere 3300 combine**, gas, quick tach feeder house, variable drive, chopper, 16.9-26 tires, 2143 hrs, sells with John Deere 12'6" head with Hiniker floating cutter bar, everything runs & works • **Case IH 1083 8 row 30" corn head**, head is good condition & ready to go to the field, #0J00149377 Yetter Devistators not sell with head • **International 963 corn head**, 6 row 30", good condition, always stores inside, straight tin • **Case IH 1063 corn head**, poly, new knives, chains, & stripper plates 250 acres ago • **Case IH 1020 grain table**, 30', hydraulic fore & aft • **Case IH 1020 grain table**, 22.5', hydraulic fore & aft • **Case IH 1020 grain table**, 20' hydraulic fore & aft • **Case IH 1020 17 1/2' flex head**, well maintained straight head, clean auger & cutter bar, poly skids, hydraulic fore/aft, stored inside, #JJC0092079 • **John Deere 925 grain table**, hydraulic fore & aft, newer poly • **John Deere 216 grain table**, sells with 20' cart • **International 963 corn head**, good condition, always stored inside • **International 820 grain head**, 20' flex, extra sickle, plastic fingers, original to the 1480 • **John Deere 843 low**

**tin corn head**, throat ear saver, new style power drive shafts • **John Deere 643 corn head**, high tin, ear savers, new style drive shafts • **John Deere 643 High Tin corn head**, field ready, Case IH hex shafts for Legacy series combines, with 2 stalk stompers • **John Deere 643 corn head**, high tin, 6 row, 30", sells with homemade head cart • **John Deere 444 corn head**, ear savers, always stored inside, used on 150 acres of corn each year, hasn't been used in the past few years • **John Deere 205 2 row corn head**, in very good condition, came off JD pull type JD 46 combine, good collector piece • **Unverferth McCurdy HT 30 head cart**, good tires, 30" • **Unverferth HT 30 head cart**, extendable tongue, lights, tie downs, 7.50-10 tires

### • BACKHOE • TELEHANDLERS • SKIDSTEERS

• **2016 Cat TL642D Telehandler**, 6500#, 42', 4x4, self leveling cylinders, quick tach mast, 48" forks, front aux hydra, 13.00-24 MH tires, 883 hrs, like new, #ML800393 • **Ford 555C backhoe**, 2wd, enclosed cab, 88" front bucket & 30" hoe bucket, extendable hoe, shows 2094 hrs, #417786 • **John Deere 450G Series IV dozer**, 6 way blade, pwr shift, peddle/lever steer, shows 7551 hrs, TO450GF811260 • **ASV Scout SC-50 Tracked UTV**, Perkins diesel, steering wheel, foot pedal transmission control, winch, rear seat, storage/tool boxes, over head rack, snow blade, rear hydra couplers, 323 hrs, CFA00276 •

**Don't have the Internet? Not a problem! Please call Robert Mishler, 260-336-9750**



**2015 Bobcat S530 skidsteer** enclosed cab, air cond, radio, aux hydraulics, Bob-Tach, 66" bucket, 10-16.5 NHS like new tires, needs door, ALR812796 • **1992 Skytrack Military Telehandler**, 6000#, 37' reach, 4x4, Cummins 5.9 6cyl diesel, leveling cylinders, 40" hydra sliding forks, 17.5-25 tires 80%, 3178 hrs, #6000M2F1784 • **New Holland L553 Skidsteer**, Kubota diesel, aux hydra, 2509 hrs, NH quick tach, sells with bale spear, good tires • **Sanderson 6000# Telehandler**, new hydra pump •



**CAT 215 excavator**, mechanical thumb, 30" bucket, 28" tracks, 3304 CAT motor, 2191 hrs showing • **IH 175 Track Loader**, 4-in-1 bucket, powershift, shows 1326 hrs

### TRACTORS

• **John Deere 4630**, quad range trans, 2 remotes, 3rd link, Firestone 10 bolt duals, 14L-16.1 SL front tires, cold air spent \$1600 on converting over to R134 air conditioning, #010305R second owner, very nice • **John Deere 4620 D syncho range**, 2 remotes that are updated to pioneer, Firestone 18.4-38 radials no duals, 14L -16.1 front tires, 3rd link, point of interest this tractor has a John Deere 6030 hood & air cleaner system, tractor runs very good • **John Deere 4230 CHA**, quad range, 540/1000 pto, 2 remotes, 8 front weights, front fenders, K&M step, air blows cold, 3rd link, Firestone 18.4-34 tires, cold air, #029772R • **1968 John Deere 4020 powershift**, 2 remotes, 540/1000 pto, 3 pt, engine & transmission rebuilt in 2011 within last 1000 hrs, 7373 total hrs, 18.4-34 rubber • **1969 John Deere 3020**, diesel, synchro, rebuilt injector pump, overhauled & new clutch, completely restored & lots of new parts, 16.9-38 rubber • **Ford 8730 tractor**, powershift, 3 remotes, 540/1000 pto, 3 pt, sliding rear window, right hand door, 8 slab weights, 18.4-38 rears & duals, 11.00-16 front tires, 5383 hrs • **Ford 5000 gas wide front**, 3pt, 1 remote, platform open station & fenders, nice straight tractor, good matching tires • **John Deere 5520 2wd**, full cab & air, Sync Reverser, 3pt, 540 pto, grill guard, 16.9-24 tires, shows 1363 hrs, #LV5520N158120 • **Allis Chalmers 200**, 2 remotes, 540 pto, 3 pt, 12 suitcase weights, factory Allis Chalmers cab with AC, 18.4-38 rears, 10.00-16 fronts, 2854 hrs • **White 2-105**

**tractor**, over/direct/under, 2 remotes, 540 pto, 3 pt, 18.4-38 rears, wheel weights, 4327 hrs • **John Deere 60**, gas, NF Rolla matic, rear hydraulic, JD cylinder, runs good • **International Cub Lowboy**, gas, dual diamond tread tires, with Woods 59 belly mowers needs deck belts

### HAY and FORAGE EQUIPMENT

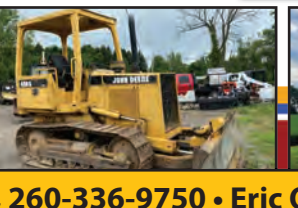
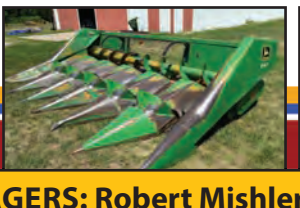
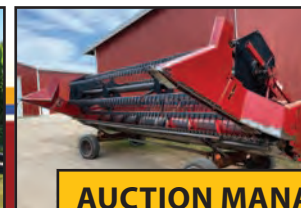
• **New Holland BB940A big square baler**, 3'x3', auto greaser, auto oiler, hydraulic pick-up, rear camera, small 1000 pto, New Holland moisture sensors & monitor, 600/55-22.5 tires, Silo King Dry Applicator or Liquid preservative applicator, 30,352 bales • **John Deere 5830 4x4 forage harvester**, 300 hp, kernel processor, 28L-26 front & 14.9-24 rear tires, new parts ready to go to the field • **Dion F63-120 D.F.E. rotary cut corn head**, knives & chains in good condition, field ready, #185361 • **New Holland FP230 Forage Harvester**, walking tandem axles, spout extension, good augers & blower fan, small 1,000 pto, electronic controller, sells with New Holland open side hay head, always stored inside very good condition • **(2) Meyer 4618 forage wagon Total Speed System**, 3 beater, fold down unloading conveyor, roofs are removed, on Meyer X1506 gear • **Meyer 18' forage wagon**, 3 beater, fold down unloading conveyor, roof, Unverferth McCurdy G12T gear • **John Deere flail green chopper** • **New Holland 499 hay bine**, 12' hydaswing, good rubber rolls • **International #15 hay elevator**, 30', electric motor, transport, always stored inside, very original condition • **Gehl 1475 round baler**, net/twine, gathering wheels, 540 pto • **Gehl 1620 silage wagon**, 3 beaters, roof, Gehl 614 tandem axle gear, 12.5-15 tires, good wagon ready to use • **Meyer 3218 silage wagon**, 18', front or rear discharge hydra drive web, roof, 3 beaters, tandem axle gear, 12.5-15 tires, ready to use • **Gehl 980 silage wagon** 18', front unload, 3 beater, no roof, on Gehl tandem axle with 12.5L -15SL, stored inside • **Gehl 980 silage wagon** 16', front unload, 3 beater, no roof, on Gehl tandem axle with 12.5L



-15SL, stored inside • **Meyer tandem axle 18' forage wagon**, 3 beater, roof • **Gehl 865 Forage chopper**, pull type, good knives, sells with hay head & Gehl 2 row corn head • **New Holland 163**, 4 basket tedder, nice • **Sitrex RT-5200-H**, 4 basket tedder, hydraulic fold • **IH hay rake** same as NH 56, rubber teeth • **Miller Pro 7916 Hay Buddy** hay merger, 14'6" belt • **John Deere 1600 haybine** 12', center pivot hitch • **John Deere 335 round baler**, hydra twine tie, bale kicker, works good however to large for sellers tractor • **2019 Krone KW 5.52/4x7T 4 basket tedder**, hydra lift wings, like new • **Degelman 9' Silage Blade** with 18" extensions making it 12', tractor brackets were bought new for John Deere 7000 series used only a couple times, blade straight cylinders all work • **John Deere 1209 hay bine** rubber rolls • **John Deere 574**, 5 bar rake, rubber teeth, dolly wheel • **Farmhand 5 wheel rake**, hydraulic lift

**WE WILL BE CALLING BIDS ON EACH ITEM FROM A REMOTE LOCATION.**

- 1) Bid online at [SchraderAuction.com](http://SchraderAuction.com)
- 2) Bid by phone during the auction. Call no later than **FRIDAY, AUGUST 7th, 5pm** to schedule your call.
- 3) Bid by submitting an absentee bid on the item that you are interested in. Absentee bids need to be turned in no later than **FRIDAY, AUGUST 7th, 5pm.**



**AUCTION MANAGERS: Robert Mishler, 260-336-9750 • Eric Ott, 260-413-0787**

**SCHRADER** 800-451-2709  
Real Estate and Auction Company, Inc. For updates visit our website: [www.SchraderAuction.com](http://www.SchraderAuction.com)



**ONLINE/VIRTUAL BID BY PHONE ABSENTEE BID**

# PRE-HARVEST EQUIPMENT AUCTION

*Virtual* **TUESDAY, AUGUST 11, 2020 • 10 AM**

**WE WILL BE CALLING BIDS ON EACH ITEM FROM A REMOTE LOCATION.**

- 1) Bid online at [SchraderAuction.com](http://SchraderAuction.com)
- 2) Bid by phone during the auction. Call no later than **FRIDAY, AUGUST 7th, 5pm** to schedule your call.
- 3) Bid by submitting an absentee bid on the item that you are interested in. Absentee bids need to be turned in no later than **FRIDAY, AUGUST 7th, 5pm.**



## PLANTING EQUIPMENT • SPRAYING EQUIPMENT

• **Gandy Orbit 62 Series Air Seeder**, 24 bushel box, 12 hole, seed level indicator, 12 volt shut off, hoses, spreader plates, ground drive, owners manual • **Great Plains Solidstand 15 no-till drill**, 15', center point hitch, Remlinger brush auger, 2 row harrow, 1376 acres • **John Deere 7200 6 row**, 30", Max Emerge 2 units, Keeton seed firmers, 3 bushel seed boxes, corn & bean plates • **John Deere 7000 4 row** male row seed corn planter with squeeze pump on folding tool bar, new opener discs, needs fertilizer tanks • **Great Plains Solid Stand 15 No Till Drill**, Caddy hitch with coulters like new iron, grass seeder, 2 pt hitch, press wheels, used this spring • **Century 1000 gal sprayer**, hydraulic fold 60' booms, X booms, 20" nozzle spacing, Single nozzle bodies, no nozzles, Raven 440 controller with 3 sections shutoff, PTO pump, ST215/75R14 tires, 12.5L-15.5L tires included as well, 2" fill • **Hardi 500 gallon sprayer**, 45' boom, triple nozzles, foam marker, chemical dump, quick fill, 50 gallon rinse tank, fresh water tank, hydraulic boom raise

## TILLAGE

• **John Deere 726 mulch finisher**, 27' hydra adjustable disc, walking axles on main frame & wings, rear hitch & hydraulics, discs 17 1/2", 9" knock on shovels very low use some are new, LED lights • **Unverferth 225 Rolling harrow**, double basket, buster bar, 15" tires • **2009 Landoll 2211**, 9 shank disc ripper w/chopping reel • **John Deere 512 disc ripper**, 9 shank, cushion gang, 3 bar spike harrow, tandems, 22'6" • **John Deere 510 disc ripper**, 7 shank, John Deere 7" winged points almost new, Front blades 21" & Rear blades 20" • **Case IH 490 disc**, 29', 7 1/2" spacing, Front 21", Rear 18 1/2", Tandem wing wheels • **International 720 semi mtd onland hitch**, 7 btm 18", auto reset moldboard plow • **John Deere 2600 6 btm plow**, semi mounted, in furrow, auto reset bottoms, thick moldboards • (2) **John Deere 450 15' drills**, gauge wheels, harrow closers, 7 1/2" spacing, John Deere tandem hitch, always stored inside, very nice • **IH 470 disc**, 18', manual wing fold • **Farm King 14-H offset 14' disc** very good blades & scrapers • **John Deere 3pt 3 bottom plow**, all coulters, tail wheel, trip bottom • **John Deere BWF 17' tandem wheel disc**, 8 1/2" spacing, 19" blades, scrapers, good condition • **DMI Colter Champ II disc chisel**, 11 shank, lever bar, one new tire, hydraulic adjustable 20" discs • **Hiniker 18' field cultivator**, buster bar • **Anderson Rock picker**, pto drive, hydra dump, pull behind

## FEED TRUCK • MIXERS • MANURE SPREADERS

• **Buffalo Kwik Kracker Roller mill**, 44" rollers, 60" blower fan, 8" hydra feed auger, 540 pto • **Triolet Solomix 1200L mixer wagon**, scales, twin screw, 385/65R-22.5 tires, #SM-2-1200L, good

condition

**1993 IH 4900 feed truck**, DT 466 motor, Weller automatic & rear end, live pto, tandem axle, Kuhn Knight 4063 mixing bed, scales, drivers side discharge, 22.5 rubber, 441,253 miles • **1988 Ford LN 8000 feed truck**, 7.8 6 cylinder Diesel engine, automatic transmission, single axle, 1999 Harsh Hay-sizer 14Z30 Feed Bed, 4 augers, hydraulic bunk auger, scales, in cab controls, tires FS591, #14Z30HB8290 • **L.M.T. MFG 4600 gal liq manure tank**, 1000 pto vacuum pump, 4 injectors, good 20-20 26 ply tires • **Pride Of The Farm 2,000 gallon manure tank**, with vacuum pump, 540 PTO, 16.5L-16.1 tires, suction hose • (4) **43x31.00-20 tires** & rims, on rims, 10 ply • **Kuhn Knight 8124 Pro twin Slinger spreader**, owner states mechanically works but sides are rusted though • **New Idea 3732 tandem axle manure spreader**, top beater, poly floor, slop gate, good flotation tires • **Kewanee 600 double chain elevator**, with a corn drag • **Arts Way 425A feed grinder**, scales, load auger, long unload auger • **New Holland 353 grinder/mixer** with extendable auger • **John Deere 400 grinder/mixer** with extra screens

## TRUCKS

• **1996 Peterbilt 377 3126 Cat**, Eaton 9 speed, air ride, aluminum tanks, steel rims, Unibilt Sleeper, 22.5 rubber, 825,771 miles • **1980 Ford 8000 tandem grain truck**, 855 V-8 Cummins, 18' Omaha Standard bed, roll tarp, twin cylinder hoist, twin screw, spring ride, cargo doors, coal chute, 2 speed rear end, 232,286 miles • **1975 Ford 700 tandem grain truck**, 361 gas motor, 4 speed w/ 2 speed rear end, hydraulic brakes, roll tarp, twin cylinder hoist, 9.00-20 tires, 63,811 miles • **2006 Jeep Liberty Limited diesel**, leather heated seats, sunroof, XM radio, power everything, cold air, 235/70-16 tires & alum rims, new timing belt, rebuilt rear axle, 193,075 miles, runs & drives good • **2008 Chevrolet Trailblazer**, 4x4, cloth power seats, 122,000 miles • **2003 Chevrolet Duramax 2500 HD Pickup**, 4X4, extended cab, B&W hitch, leather interior, cold air conditioning, FASS fuel system, mechanic special truck smokes, 272,575 miles • **2003 GMC K1500 Sierra**, 4x4, extended cab, 5.3 V8 gas, 176,416 miles, very good tires • **2005 IH 7400 tandem axle utility truck**, DT466 diesel, Allison trans, HD bumper, with Altec AA755L 18' bed, 56' reach, has an oil leak on outrigger hose, DC inverter, 11R-22.5 rear tires & 315/80-22.5 front tires, 267,234 miles • **1997 Ford F-150 4x4**, auto trans, 4.6 gas, reg cab, 8' bed, 174,401 miles, uses oil • **1996 Damin Intruder mobile home**, Freightliner Chassis, Chevy 454 motor, new Bridgestone 12 ply tires, non-smoker, no pets, Kohler generator, 2 air conditioners, 34 1/2' long, electric step, dirt skirt, queen island bed, 106 gallon fresh water tank, sleeps 6, awning, new batteries, 50 amp plug, reese hitch & plug, motorcycle rack, stored in climate control barn,

**Don't have the Internet? Not a problem!**  
Please call Robert Mishler, 260-336-9750

**SCHRADER**  
Real Estate and Auction Company, Inc.

**260-244-7606 • 800-451-2709**

**For continual updates, visit our website: [www.SchraderAuction.com](http://www.SchraderAuction.com)**



**ONLINE/VIRTUAL BID BY PHONE ABSENTEE BID**

# PRE-HARVEST EQUIPMENT AUCTION

*Virtual* **TUESDAY, AUGUST 11, 2020 • 10 AM**

**WE WILL BE CALLING BIDS ON EACH ITEM FROM A REMOTE LOCATION.**

- 1) Bid online at [SchraderAuction.com](http://SchraderAuction.com)
- 2) Bid by phone during the auction. Call no later than **FRIDAY, AUGUST 7th, 5pm** to schedule your call.
- 3) Bid by submitting an absentee bid on the item that you are interested in. Absentee bids need to be turned in no later than **FRIDAY, AUGUST 7th, 5pm.**



## TRUCKS cont.

34,000 miles • 2001 Ford SES 4 door, power seats, power windows, alum rims, V6 3.0 gas, 174,401 miles • 1971 Ford C600 cab over truck, 330 gas eng, 4+2 trans, 115K miles, 20' dump flatbed with Lo-Boy scissor hoist

## TRAILERS

• 2005 East Genesis 35' aluminum dump trailer, 72" sides, grain door, air ride, alum rims • 1987 Cornhusker hopper bottom trailer, 425/65R-22.5 super singles on alum rims • 1986 Wilson hopper bottom, 40', 54" sides, roll tarp, 22.5 rubber • 1993 Merhow Alum 2 horse trailer, bumper pull, changing & tack room up front, 2 side access doors, ramp on rear, stored inside, good condition • 2003 Mako (Built by Gulf Stream) Bunk house, 5th wheel trailer, 24', 13' slide out, sleeps 7 or 8, stove, refrigerator, air conditioner • Cub travel trailer, tandem axle, air conditioning, awning, single slide out, pop up on front & back • Dane 48' semi trailer, set up with gates making small pens to haul nursery pigs, 98" wide, roll up door • Bumper hitch livestock trailer, 10', title, cut gate, rear loading ramp • Aluminum 2 place snowmobile trailer, title

## WAGONS • GRAIN CARTS

• Killbros 1200 Grain Cart, 30.5L-32 tires, good augers • (2) Unerverth 325 gravity wagon, roll tarp, auger chute & pit chute, light Kit, Unerverth G13 gear, 11R22.5 tires, green & red • J&M 350 gravity wagon on 13 ton gear, lights, 10.00-20 tires • Killbros 385 gravity wagon on 12 ton gear • J&M 500 bushel grain cart, side extensions, corner auger, small 1000 pto, 24.5-32 tires • Parker 6000 grain cart, 540 pto, 400 bushel, 16.5L-16.1 tires • McCurdy gravity wagon on good 6 ton gear with good 15" tires • Parker 280 bu gravity wagon, 2 doors, partial divider, 11.00-16 12 ply tires • Rowe 15' steel side green bed with cargo doors & grain gates 40" sides on Kee- wanee 45 running gear also included is Midwest hoist & hydraulic tank & pump • 14' silage wagon/seed corn wagon 68" sides hy- draulic dump cargo doors with grain gates 13.6-16.1 tires

## GRAIN BINS • GRAIN LEG • AUGERS FANS LOCATED IN FRANKFORT AND BURLINGTON, IN

• 30' grain bin, full air floor, 30 horse motor & 44' fan • Stormor 48' grain bin, with partial air floor, with ventilation fans • 130' grain elevator leg, 14" trunk with 10 hole distributor • 100' grain elevator leg, 13" trunk with fill auger & motor, bin distributors, also includes all connected downspouts • (2) 16' cone bottom bin & super structure, 9 rings high • 2 ton feed bin with bottom slide & bucket slide chute on legs • 31' stainless steel transport conveyor, 8 inch belt with 10 hp 3ph electric motor • Farm King 10" x 31' load out auger on transport with 3 hp motor with reducer good flighting • Highline Accelerator Xtra 8510 85' 10" conveyor, 10' belt, 12" feeder auger, 540 pto, hydraulic lift, light kit, good tires, low use



## MISC EQUIPMENT

• John Deere AMT 626 Gator 5 wheeler, gas engine, electric dump, 1439 hrs, 25x12-9 NHS tires, #6227 2nd owner, very nice • Hutchinson 10"x35' loadout auger, 540 pto, always stored inside, very good condition, low wear on auger • May rath 10" x 60' swing away auger, hydraulic raise, 540 pto • 300 gallon fuel tank on running gear, 12 volt pump, works • 1992 Featherlite Livestock topper, fits a 8' bed, plexiglass inserts, center cut gate, roof vent • Smidley portable hog scales, stored inside • M&W 15' batwing mower, small 1000 pto, airplane tires • Bush hog 14' mower, 1000 pto • John Deere E037M sickle bar mower, pull type • NH quick tach 2 prong bale spear • (3) 220 sepearte fuel tanks bolted to lifting skid • Man lift basket 44"x93" with fork lift fork slots • Onan 100 gen set on trailer, Detroit 6 cyl diesel, 1ph 66kw 82.5kva3ph 100kw 125kva 300 amp, Generator & trailer has not been used in a number of years • (3) Schaefer barn fans with brackets • Group of chicken waters, feeders & medication meters • Natureform model NOM-45 1000 egg incubator, 110V, uses heated water, automatic egg turner • Campbell Haus- feld 3hp air compressor, 220V, very little use • Hale 6" pto irrigation pump, good condition always stored inside, used as a backup pump • 3pt category 1 3pt log splitter, runs off tractor hydraulic • Wisconsin V-465D motor, 91 hours, came off of a military welder

**SMALL ITEMS WILL BE IN A TIMED ONLINE ONLY AUCTION ending TUESDAY, AUGUST 11, 5:30pm.**

Visit [www.SchraderAuction.com](http://www.SchraderAuction.com) for details.



**Don't have the Internet? Not a problem! Please call Robert Mishler, 260-336-9750**

**SCHRADER**  
Real Estate and Auction Company, Inc.

**260-244-7606 • 800-451-2709**

**For continual updates, visit our website: [www.SchraderAuction.com](http://www.SchraderAuction.com)**