

THIS AUCTION INCLUDES A TIMED ONLINE ONLY PORTION ENDING ON:  
WEDNESDAY, AUGUST 26 • 10AM GO TO [SCHRAEDERAUCTION.COM](http://SCHRAEDERAUCTION.COM) FOR MORE INFO!



**HOW TO BID:**  **ONLINE**  **BY PHONE**  **ABSENTEE BID**

FRIDAY, AUGUST 28 • 10AM | THREE RIVERS, MI

# VIRTUAL AUCTION

- FRED W. NAGEL & SONS, INC. -

Corporate Headquarters:  
950 N Liberty Dr., Columbia City, IN 46725  
800.451.2709 • [www.SchraderAuction.com](http://www.SchraderAuction.com)

**SCHRAEDER**  
Real Estate and Auction Company, Inc.



**Follow us on:**



AUGUST						
Su	M	Tu	W	Th	F	Sa
						1
2	3	4	5	6	7	8
9	10	11	12	13	14	15
16	17	18	19	20	21	22
23/31	24/31	25	26	27	28	29

**AUCTION MANAGERS:** Ted Boyer • 574.215.8100  
Ed Boyer • 574.215.7653 • ed@boyerbig.net  
#6505261770, #6501225192

**TERMS:** Cash or check w/ proper ID, 4% convenience fee for credit cards. Announcements made the day of the auction take precedence over any printed material. Not responsible for accidents.

HOW TO BID:  ONLINE  BY PHONE  / ABSENTEE BID

FRIDAY, AUGUST 28 • 10AM | THREE RIVERS, MI

# VIRTUAL AUCTION

- FRED W. NAGEL & SONS, INC. -

— FRED W. NAGEL & SONS, INC. —

# VIRTUAL AUCTION

FRIDAY, AUGUST 28 • 10AM | THREE RIVERS, MI

**HOW TO BID:**  **ONLINE**  **BY PHONE**  **ABSENTEE BID**

- VEHICLES & SUPPORT
- SHOP BUILT CONVEYOR BELTS
- HYDRAULIC DUMPSTERS
- COLLECTION HOPPERS
- 4 POST STANDS
- ELECTRIC EQUIPMENT
- RELATED LINE EQUIPMENT
- 80+ LOTS OF PART, SUPPLIES,  
& RELATED ITEMS
- SHOP BUILT CATWALKS
- PLANTING EQUIPMENT



Fred W. Nage  
and Sons  
**Gladiolus**

THIS AUCTION INCLUDES A **TIMED ONLINE ONLY PORTION** ENDING ON:  
**WEDNESDAY, AUGUST 26 • 10AM**  
GO TO **SCHRADERAUCTION.COM** FOR MORE INFO!



800.451.2709 • [www.SchraderAuction.com](http://www.SchraderAuction.com)





- FRED W. NAGEL & SONS, INC. -

# VIRTUAL AUCTION

FRIDAY, AUGUST 28 • 10AM | THREE RIVERS, MI

HOW TO BID:  ONLINE  BY PHONE  ABSENTEE BID



## VEHICLES & SUPPORT EQUIPMENT

- **2013 Ford Expedition Limited**, MPV, 5.4L V8, 4WD, 3rd Row Seating, Sun Roof, Power Running Boards, Heated/Cooled Front Seats, Ford Mobile Media Dash, Loaded, 79K Miles, Extra Nice
- **2007 Dodge Durango Slt 4wd**, 4.7L V8, 3rd Row Seating, Sun Roof, 106K Miles, Extra Set Of Tires
- **2006 Ford F-250 XLT 4x4 Super Duty PU**, Reg. Cab, 5.4L V8, 58K, has Snow Plow Mounted on it for 1 Yr., Snow Plow Sells Separately
- **Western Pro V Snow Plow**, 8 1/2' Ultra Mount System & Controller Goes w/ Blade
- **1986 Ford LN8000 Straight Truck**, Cat. 3208 V8 Rebuilt at 125K by MI CAT. 17" Flat Bed, 189K
- **2007 Yamaha Grizzly 450 ATV**, 4WD, Push Button Start, Auto, F & R Racks, 3,454 Miles
- **Forest River 6'x10' Enclosed Cargo Trailer**, Single Axle, Very Little Use
- **Shop Built Dump Trailer**, Single Axle, Pintle Hitch, Hyd. Tailgate, Hyd. Jack Non-functional but has the Parts to Repair

## SHOP BUILT CONVEYOR BELTS

All Conveyors are 240 V, 3 Phase

- **9' W x 24' L w/ 5 Sides**, 5'3" Output Height w/ Catwalk w/ Truck Guides
- **(2) 5' W x 4 1/2' L**, w/ 1/3 HP Motor & Gear Box
- **(3) 2' W x 14 1/2' L x 3 1/2' H**, Adj. Legs, 1/3 HP Motor & Gear Box Drive w/ Speed Controller
- **(2) 3' W x 19' L 2'9" H** w/ Bench Seats, 1/3 HP. Motor & Gear Box Drive
- **5 1/2' W x 24 1/2' L** w/ 3/4 HP Motor & Gear Box w/ Tapered Belt Floor
- **4 1/2' W x 24 1/2' L** w/ 1/2 HP Motor & Gear Box w/ Tapered Belt Floor
- **(2) 3' W x 9' L** w/ Variable DC Motor & Gear Box
- **3' W x 21 1/2' L Elevator Conveyor** w/ Cleated Belt & 1 HP & Gear Box, 9 1/2' at Top

**INSPECTION DATES:**  
Saturday, August 22,  
Monday, August 24,  
& Tuesday, August 25  
from 9am-3pm



- LOCATION OF EQUIPMENT -

18389 Michigan Ave., Three Rivers, MI 49093 • 7 miles North of Three Rivers on US 131 OR 5 miles South of Schoolcraft to Michigan Ave. go East 2 miles to view equipment

Go to [www.SchraderAuction.com](http://www.SchraderAuction.com) for bidding procedures, pictures, updates, and more information.  
**Don't have internet?** Not a problem! Please call Ted Boyer: 574.215.8100

## HYDRAULIC DUMPSTERS

- **(2) Hercules Hi 626 Sp 5 1/2' W x 5 1/2' H** w/ 3 Phase Motor
- **(3) Shop Built 5 1/2' W x 5 1/2' H**, Single Phase Hyd., Pump

## COLLECTION HOPPERS

- **(2) Rubber Padded Hoppers**, 5' Sq. x 4' H w/ Transport Casters

## 4 POST STANDS

- **(2) 5' W Sq. x 5' H**
- **32" W Sq. x 4' H**

## ELECTRIC EQUIPMENT

- **30" Sq. Control Panel** w/ Penta Drive Speed Controller
- **24" Sq. Control Panel** w/ Penta Drive Speed Controller
- **Dongan 30 KVA 3 Phase Transformer**, 380 V to 240 V
- **(2) Siemens 240 V 60 Amp 3 Phase Disconnects**
- **Square D Drum Switches**
- **Lots of Other Misc. Parts & Supplies**

## RELATED LINE EQUIPMENT

- **Shop Built Shaker Screens**: 4 1/2' W x 10' L x 5 1/2' H w/ 2 HP Motor 240 V 3 Phase
- **3' W x 9' L** w/ 4 Screen Sizes & 7' Conveyor
- **Shop Built Product Washer/Stone Remover** w/ 1 1/2 HP Motor & Gear Box 240 V, 3 Phase
- **(2) Compass E50 Wood Framed Elevators**, 18" W w/ 44" Discharge Height w/ Feed Belt & Elevator
- **Hammond Dk-8 Dust Collection Unit**, 5 HP Motor 240 V, 3 Phase
- **Shop Built Shelving Units**: 28" W x 28' L x 28' H w/ an 8' H Back
- **(2) 2' W x 2' H x 12' L** w/ Plywood Shelf

## 80+ LOTS OF PART, SUPPLIES, & RELATED ITEMS

Go to [Schraderauction.com](http://Schraderauction.com) for More Info & Lot #'S

## SHOP BUILT CAT WALKS

- **5' W x 10' L x 4' H**
- **(3) 3 1/2' W x 10' L x 4' H**
- **Two Levels 2' W x 10' L x 4' H & 3' W x 6' L x 5 1/2' H**
- **4' W x 21' L x 4' H** w/ 3 Stairways
- **6' W x 10' L x 7' H** w/ Stairway
- **6' W x 6' L**

## PLANTING EQUIPMENT

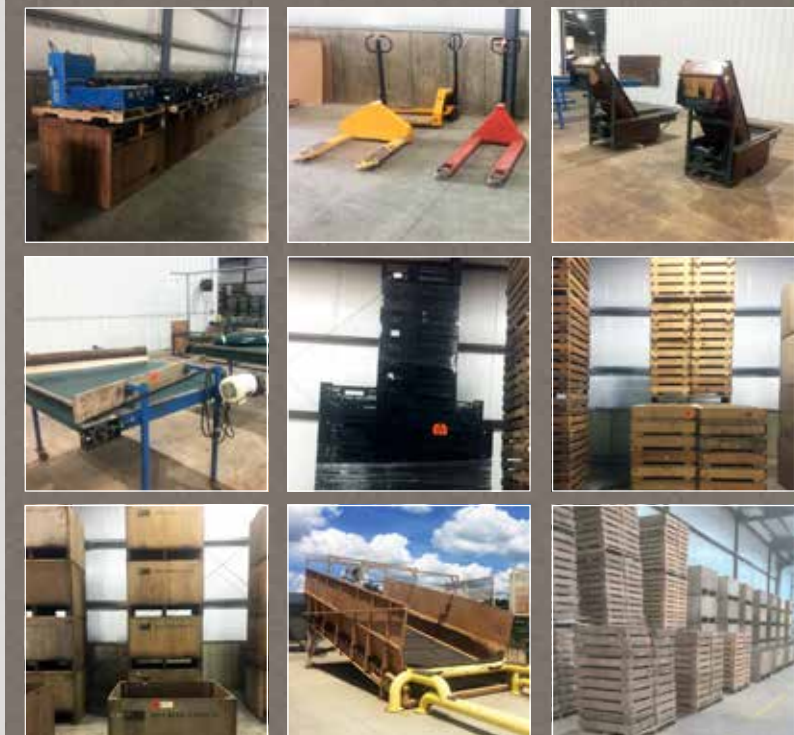
- **Cebeco 3 Pt Planter** w/ Adj. Feed Belt & Depth Control
- **Shop Built 3 Pt Planter** w/ Gandy Hopper & Adj. Depth Control
- **Furrow Opener 3 Pt Planter**

## TIMED ONLINE ONLY AUCTION ITEMS ENDING ON WEDNESDAY, AUGUST 26 • 10AM

- **(130) Dayton 24" Industrial Fan** w/ 3/4 HP Motor 240/480 Volt, 3 phase
- **(39) Aerovent 24" Direct Drive Tube Axial Fan** 2 HP Motor 1740 RPM 240/480 V, 3 phase
- **(91) Klima 35" Direct Drive Tube Axial Fan** 4 HP 1800 RPM, 18,000 CFM 240 V, 3 phase
- **(3,120) Screen Bottom Drying Boxes**
- **(28,240) Screen Bottom Storage Trays**
- **(300) 3'x4' 2'x4' Flat Pallets**
- **(20,000) Black Plastic Storage Trays**, 15 3/4" W x 23 1/2" L x 7" Deep

## SOLD IN LOTS

GO TO [SCHRADERAUCTION.COM](http://SCHRADERAUCTION.COM) FOR INFO



## FOR THE VIRTUAL AUCTION, WE WILL BE CALLING BIDS ON EACH ITEM FROM A REMOTE LOCATION.

- 1) Bid online at [Schraderauction.com](http://Schraderauction.com)
- 2) Bid by phone during the auction. Call no later than **Thursday, August 27th, 2pm** to schedule your call.
- 3) Bid by submitting an absentee bid on the item that you are interested in. Absentee bids need to be turned in no later than **Thursday, August 27th, 2pm**.



800.451.2709 • [www.SchraderAuction.com](http://www.SchraderAuction.com)



OWNER: Fred W. Nagel & Sons, Inc., Tom Nagel • 269.506.0877

SALE MANAGERS: Ted Boyer • 574.215.8100 & Ed Boyer • 574.215.7653 • [ed@boyerpig.net](mailto:ed@boyerpig.net)