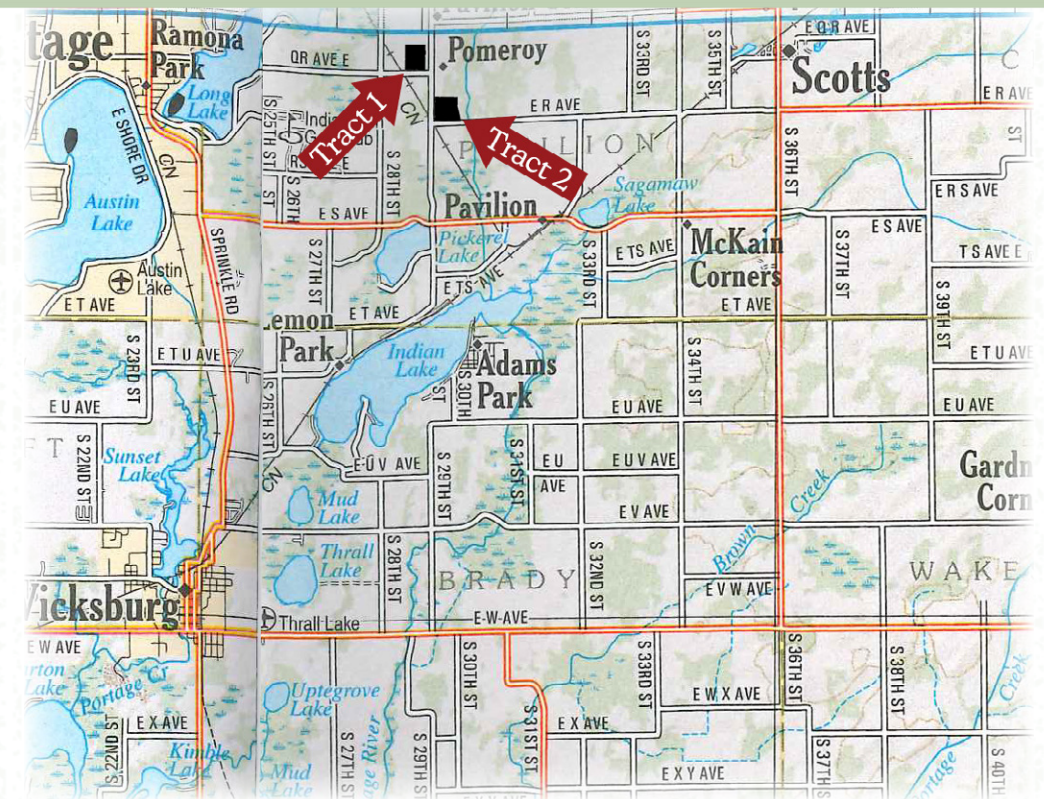


Virtual AUCTIONS

Monday, December 14 | Scotts, MI
Equipment @ 10am & Real Estate @ 3pm



Kalamazoo County • Southwestern, Michigan

PROPERTY & EQUIPMENT LOCATION: The equipment is located at Tract 1. Tract 1 is on Qr Ave E just East of S 28th St. Tract 2 is on R Ave E just East of S 29th St in Scotts, Michigan.

WE WILL BE CALLING BIDS FROM A REMOTE LOCATION.

- 1) Bid online at www.SchraderAuction.com. You must be registered to bid online **ONE WEEK BEFORE THE AUCTION**.
- 2) Bid by phone during the auction. Contact the auction company no later than **12PM (NOON), DAY BEFORE AUCTION** to schedule your call.
- 3) Bid by submitting an absentee bid on the tract(s) or equipment item(s) that you are interested in. Absentee bids need to be turned in no later than **12PM (NOON), DAY BEFORE AUCTION**.

HOW TO BID: Online By Phone Absentee Bid

800.451.2709
www.SchraderAuction.com

SCHRADER
Real Estate and Auction Company, Inc.

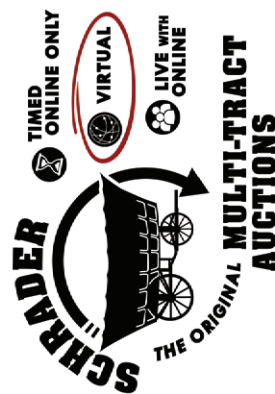
Virtual AUCTIONS

Monday, December 14 | Scotts, MI

Equipment @ 10:00am

Real Estate @ 3:00pm

HOW TO BID: Online By Phone Absentee Bid



AUCTION MANAGERS:

Ed Boyer • (574) 215-7653 • ed@boyerpig.net
& Ted Boyer • (574) 215-8100
#6505261770, #6501225192

SCHRADER
Real Estate and Auction Company, Inc.

Corporate Headquarters:
950 N Liberty Dr, Columbia City, IN 46725
800.451.2709 • www.SchraderAuction.com

DECEMBER	SU	M	TU	W	TH	F	SA
	6	7	1	2	3	4	5
	13	14	8	9	10	11	12
	20	21	15	16	17	18	19
	27	28	22	23	24	25	26
			29	30	31		

Follow us on:



Get our iOS App

Virtual AUCTIONS

Monday, December 14 | Scotts, MI



Equipment @ 10:00am

• Tractors • Planting & Crop Care • Tillage • Combine & Harvest Equipment
• Grain Handling Equipment • Trucks & Honda 4x4s • Misc. Farm Related



69⁺ Acres
Offered in
2 Tracts

Real Estate @ 3:00pm

• 66.97+ FSA Tillable Acres • Highly Productive Soil • Kalamazoo Loam Silt

HOW TO BID: Online By Phone Absentee Bid

800.451.2709
www.SchraderAuction.com

SCHRADER
Real Estate and Auction Company, Inc.

Virtual AUCTIONS

HOW TO BID:  Online  By Phone  Absentee Bid

OWNERS: Todd H. Weinberg Estate, Milford & Joanna Weinberg
Joanna Weinberg - PR, Joanna Weinberg - Trustee, John Dresser - Consultant
AUCTION MANAGERS: Ed Boyer • (574) 215-7653 • ed@boyerpig.net
& Ted Boyer • (574) 215-8100



Monday, December 14 | Scotts, MI:

Equipment @ 10:00am

Real Estate @ 3:00pm

Tractors: • **JD 9220 4X4**, 620/70R42 Duals new in 2019, Green Star/Auto Track, 3pt. w/ Coupler, 1000 Pto. 6735 Hrs. S#RW9220P002388 • **JD 8200 MFWD**, Green Star Ready, 420/80R46, 3Pt. w/ Coupler, 1000 Pto. 4 Remote, 12 SC Wts. Inside & Outside rear Wts. Hammer Strap, 5463 Hrs. S#R-W8200P011590 • **JD 8300 MFWD**, Green Star Ready, 18.4R46, 3Pt. w/ Coupler, 1000 Pto. 4 Remote, 12 SC Wts. Rear Inside Wts. Hammer Strap 7077 Hrs. S#RW 8300P002364 • **JD 4640, QR**, 480/80R42, 3PT. w/ Coupler, 1000 Pto. 3 Remotes, 10SC Wts. 8427 Hrs, S#4640020685R • **1966 IH 1206 Farmall**, 18.4X38 w/ Hub Duals, Hiniker 1300 Cab, Original Factory Fenders, 3Pt. w/ Coupler, 2 Remote, 540/1000 Pto. 10 SC Wts. 8095 Hrs. S#11462S-Y, Bought New Dec. 1966 • **IH 560 Diesel**, w/ IH 2000 Loader, NF, Fast Hitch, 540 Pto. 1 Remote, Spin Out Wheels TA Non-Functional, Mat Bucket • **IH SM**, 15.5-38, NF, Fenders, Hyd. S#F5498J • **Ford 8N**, WF, 3Pt. 540 Pto. • **(2) GreenStar Globes & Screens**

Planting & Crop Care: • **Kinze 3600 16x30 Planter**, Single Disk dry fert. w/ Cross Auger, Yetter Row Cleaners, • **(2) Complete set Seed Hoppers**, Regent Ins. System, KPM II Monitor & Controller, S#517292 • **JD 1690 Air seeder Soybean Special**, No-Till, Markers S#AO1690S705311 • **JD 400 Rotary Hoe** 30' Flat fold, • **Yetter/Remlinger 12x30 Row Crop Cult.** Hyd. Fold, Danish Tine, John Blue Pump • **1000 gal. Row Crop Nurse Tank** on Duo Lift Trailer • **Regent 1 Pass Application System**, 80 gal. • **(2) 5000 gal Blue Poly**, Fert. Tanks • **12,000 gal. MS Fert. Tank** w/ Support • **2 Row Cult 3pt. Bar** w/ 1 Row Unit

Tillage: • **CASE IH 370 Disk**, 31' Cushion Gang, Leveler Hitch, Rear Hitch, Light Kit, Used less than 100 Acres, S#YE0079066 • **SUNFLOWER Challenger 5035 Field Cult.** 32', 5 Bar Spike Att. Rear Hitch, Light Kit • **Unverferth 1225 Double Rolling Basket**, 35', S#A57350??? • **SUNFLOWER 4213 Coulter Chisel**, 13 Shank, C Flex Cushion Coulters, Furrow Filler Att. S#AGCS42130AZ400006*13 • **Glencoe Soil Saver Disk Chisel**, 9 Shank, Spring Cushion Coulters, Furrow Filler • **WILRICH 357 Inline Ripper Subsoiler** • **IH 800 Spring Reset Plow**, 9-18, On Land • **IH 710 Spring Reset Plow**, 7-18, On Land • **IH 700 Trip Bottom Plow**, 7-18, In Furrow, Brought New w/ IH 1206



Combine & Harvest Equipment: • **JD 9660 STS Combine**, Bullet Rotor, 520/80R42 Duals, 28L-26, GreenStar Ready, 2764 Eng. Hrs. 1839 Sep. Hrs. Chopper, 3 Camera System w/ Monitor, S#HO9660S716333 • **JD 893 Corn Head**, 8x30, Poly, S#H00893X715920 • **JD 930F Flex Head**, 30', Hydro Flex, S#H00630F731414 • **Unverferth HT30**, Head Cart, Green, S#7229 • **Unverferth HT25**, Head Cart, Light Kit, Red, S#A40 950558 • **Killbros 1400 Grain Cart**, Green S#D18710101 • **Killbros 1400 Grain Cart**, Orange, S#D20 680 172 • **(8) Gravity Wagons**, (3) w/ Augers

Grain Handling Equipment: • **Westfield WR 100-61 Transport Auger**, 10"x61' Electric Top Drive, S#214995 • **Westfield WR 80-46 Transport Auger**, 8"x46' Electric Top drive • **Westfield WR 100-31 Transport Auger**, 10"x31' Electric Top Drive • **Feterl Transport Auger**, 10"x62' Swing Auger, PTO Drive, • **Hutchinson Century II Transport Auger**, 8"x53' PTO Drive, S#214858 • **NECO Portable Bin Auger**, Electric Drive • **Farm Fans C2125A Grain Dryer**, Natural Gas, w/ Dri Tek Network Dryer Control Plus • **Brock 1538 Wet Bin** w/ 21' Auger • **Brock 40,000 bu. Grain Bin**, w/ Intake Auger, Stair Way • **Stormor 7,500 bu. Grain Bin**, Suckup Door

Trucks & Honda 4x4s: • **2019 Honda Pioneer 500 ATV Side by Side**, Automatic & Paddle Shift, 2wd/4wd, 591 Miles, 69.9 Hrs. Front Tow Bar, Rear Hitch, mi. & Hrs. Stanley Tool Box, S#HL5MLH-SC18K284008G • **2001 Honda Rancher ES 4x4 ATV**, TRX350FE, Front Tow Bar, Tool Box • **2006 Honda Rancher ES 4x4 ATV**, TRX-350FE, Front Tow Bar, Sprayer Tank, Tool Box • **2005 Ford F-250 PU**, 4WD, 6.0 Turbo Diesel, 148K • **1995 Ford F-250 PU**, 4WD, 7.5L Gas, 146K • **1990 Ford Ranger XLT PU**, 4WD, Gas, 43K • **1987 Ford F-350 Boom Truck**, w/ Versalift, Pierce Service Body • **1978 Ford F-600 Grain Truck**, 47K Apx. 16' Midwest Box, Hoist

Farm Related: • **Frontier RC 2060 Rotary Cutter**, 5' 3pt. Like new • **Bush Hog SM60 Ditch Bank Cutter**, 3pt. 540 Pto. S#12-03948 Like new • **(2) 2014 Fuel Tanks**, 1500 Gal. on Skids, Lot 62 w/ Pump • **(4) Flat Rack Hay Wagons** • **MTD DS Snow Blower**, 24" Electric/ Pull Start, 6F 2R, • **Agri-Fab Leaf Vac.** The Heavyweights, B&S OHV Gas • **Clean Oil Tank** w/ Graco Electric Meter, Hose reel, 100V Electric Motor • **Onan Generator on Trailer**, w/ Air compressor • **Irrigation Intake Tube**, & 6" Plastic Irr. Pipe • **(1) Uniroyal Tactical 11.00x20 Military Tire/Rim** for GW • **(1) 81-15 Imp. Tire/Rim** for GW



TRACT 1 - 32.4± ACRES: Frontage on Qr Avenue E & 32.01± acres FSA tillable. Flat land.

TRACT 2 - 36.6± ACRES: Frontage on R Avenue E & 34.96± acres FSA tillable. Slightly rolling to rolling, Kalamazoo Loam soil, Valley Electric Irrigation 4 Tower System, pump w/ remote irrigation switch, & suction tube to pull water from the stream. All sold as one unit.



AUCTION TERMS & PROCEDURES:

PROCEDURE: The property will be offered in 2 individual tracts or as a total of 69± acres. Bid on individual tracts, any combination of tracts or on the entire property. There will be open bidding on all tracts & combinations during the auction as determined by the auctioneer. The property will be sold in the manner resulting in the highest total sale price.

DOWN PAYMENT: 10% down payment on the day of auction with the balance in cash at closing. The down payment may be made in the form of cash, cashier's check, personal check, or corporate check. **Your bidding is not conditional upon financing, so be sure you have arranged financing, if needed, & are capable of paying cash at closing.**

ACCEPTANCE OF BID PRICES: All successful bidders will be required to enter into purchase agreements at the auction

site immediately following the close of the auction. The final bid price are subject to the Sellers' acceptance or rejection.

CLOSING: The balance of the purchase price is due at closing, which shall take place approximately 30 days after the auction. Costs for an insured closing shall be shared 50:50 between Buyer(s) & Sellers.

EVIDENCE OF TITLE: Seller shall provide an owner's title insurance policy in the amount of the purchase price.

POSSESSION: Possession on closing.

REAL ESTATE TAXES: Seller shall pay the 2020 taxes, buyers responsible for 2021 & beyond taxes.

ACREAGE: All tract acreages, dimensions & proposed boundaries are approximate & have been estimated based on current legal descriptions and/or aerial photos.

SURVEY: A new survey will be made where there is no existing legal description or where new boundaries are created by the tract divisions in this auction. Buyer(s) & Seller will share the survey expense 50:50.

AGENCY: Schrader Real Estate & Auction Company, Inc. & its representatives are exclusive agents of the Seller.

DISCLAIMER & ABSENCE OF WARRANTIES: All information contained in this brochure & all related materials are subject to the terms & conditions outlined in the Purchase Agreement. The property is being sold on an "AS IS, WHERE IS" basis, & no warranty or representation either expressed or implied, concerning the property is made by the Sellers or the Auction Company. All sketches & dimensions in the brochure are approximate. Each potential bidder is responsible for conducting his or her own independent inspections, investigations, inquiries, & due diligence concerning the property.

The information contained in this brochure is subject to verification by all parties relying on it. No liability for its accuracy, errors, or omissions is assumed by Sellers or the Auction Company. Conduct of the auction & increments of bidding are at the direction & discretion of the Auctioneer. The Sellers & Selling Agents reserve the right to preclude any person from bidding if there is any question as to the person's credentials, fitness, etc. All decisions of the Auctioneer are final. **ANNOUNCEMENTS MADE BY THE AUCTION COMPANY AT THE AUCTION PODIUM DURING THE TIME OF THE SALE WILL TAKE PRECEDENCE OVER ANY PREVIOUSLY PRINTED MATERIAL, OR ANY OTHER ORAL STATEMENTS MADE.** **EQUIPMENT TERMS:** Cash or Check w/ proper ID. 4% convenience fee for credit cards. Announcements made the day of the auction take precedence over any printed material. Not responsible for accidents.

SCHRADER
Real Estate and Auction Company, Inc.

800.451.2709
SchraderAuction.com