



**Timed
Online Only**

Whitley County, IN

AUCTION

Personal Property

BIDDING ENDS:

Saturday, January 23 • 10am EST

Preview Location:

**3885 N 450 E
Columbia City, IN, 46725**



**JD GATOR • FORD TRACTOR
• GRASSHOPPER**

• 1997 JD 4x2 Gator UTV, Hyd. Bed, 2 New Front Tires, Manual & Service Records, S/N W004X2X024340 • 1958 Ford 901 Tractor, Select-O-Speed, NE, 3pt. New Parts, w/Manual & Service Records • 2016 Grasshopper 623T 61" Zero Turn Mower, Equipped with power fold, duramax professional cut, T drive, Anti Vibe power platform, w/ kohler command pro 694 motor, Mod. 361 3 Bag grass catcher attachment W/ manual and service records, 463hrs, SN# 6619571 • Hay Wagon w/Running Gear, w/Sideboards & Newer Repaint • King Kutter 5ft Rotary Mower 3 pt. Mod. L-60-40-P-Y • 3pt Grader Blade, 6ft • 2003 ASM Single Axle Utility Trailer, drop gate, 78"x10', VIN# MVIN223456IND, Indiana title, 1 owner • 1987 Meyers Pro 14 Fishing Boat w/1987 Aluminum Calkins Boat Trailer & Johnson 6hp Sea-Horse Motor, Fish finder & Accessories w/ Manuals & Service Records (Indiana titles)

PREVIEW:

Friday, January 22 • 10am-6pm

LAWN & GARDEN

• Stihl Farm Boss MS-290 Chainsaw • Ariens Deluxe 12.5 AX254 Motor Mod. 921024 Electric Start Snow Blower • MTD Huskee Mod. 21AA412C131 Rear Tine Tiller • Toro Recycler 5 GTS 2-cycle Self Propelled Push Mower • Echo GT-160AE Weedeater • Poulan Pro Gas Pruner Mod. PP258TP • Huskee 3.0 HP Chain Drive Front Tine Tiller • Lawn Boy LT 10.5 Riding Mower (non running) • Craftsman 15.5HP OH Kohler Command Hydro/ Automatic Riding Mower (non running) • Huskee 25 Gallon Pull Behind Sprayer • Agri-Fab 125 Pull Behind Broadcast Spreader • Poly 48" Lawn Roller • Precision Pro 42" Pull Behind Lawn Spike Aerator



AUCTIONEERS NOTE:

Don't Miss This Opportunity to Bid On Quality/ Well Maintained Personal Property Items!

800-451-2709

Visit Website for Updates!

www.SchraderAuction.com



**TIMED
ONLINE ONLY**

VIRTUAL

**LIVE WITH
ONLINE**

**MULTI-TRACT
AUCTIONS**

Whitley County, IN



Personal Property AUCTION

BIDDING ENDS:
Saturday, January 23
10am EST

Preview Location: 3885 N 450 E Columbia City, IN, 46725

Directions: From the intersection of US 30 & SR 205, travel north on SR 205, go approx. 5 miles to 450 E, turn west (left) onto 450 E. Travel approximately 2 miles, property on left side of road. Or from US 30 & SR 9, take SR 9 north approximately 5 miles to 400 N. Turn east (right) go approx. 2 miles & take small jog on 350 E. Continue east on 400 N 1/2 mile. Turn south (right) onto 450 E with property on right side of Rd.

Note: GPS takes you to back of property, follow directions & signs.

LAWN & GARDEN (CONTINUED)

• Great Estates Reel Mower • 300-Gallon Fuel Tank on Stand • 30' Aluminum Extension Ladder • Rolls of Fencing, Fence Panels & Barbed Wire • 2 Battery Tenders • Bird Houses • 6ft Picnic Table • (3) Galvanized Culvert Pipes 8" • 30+ Fence Posts • Large qty Red Clay Brick • Live Traps • Pet Carriers • Pruners • Garden Hose • Wheelbarrows • Yard Tools: Racks, Shovels, Axe, Hatchet & Splitting Wedges • 10+ Fuel Cans • Coleman Lanterns • Large qty Camping Supplies • Cement Tiered Water Fountain • Modern Wood Patio Rockers • Wrought Iron Bench • 8pc Patio Set • Patio Glider & Swing w/awning • Misc Patio Furniture • Montgomery Wards Trolling Motor • Ice Fishing Boxes & Tackle • Boat Anchors • Fishing Poles • Manco Fox 425 American Cruiser GO Kart (non running) • NBA Huffy Sports Premier Series & Ohio Art Michael Jordan Basketball Goals

SHOP EQUIPMENT

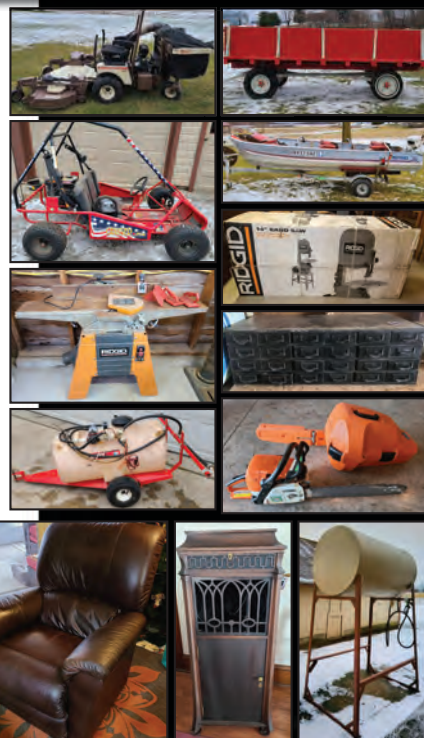
• Rigid 14" BS1400 Band Saw (new in box) • Rigid 6-1/8" JP0610 Jointer/Planer • Sears/Craftsman Mod. 113.234601 10" Miter Saw • Craftsman 8.0 Amp Mod. 315 Router & Table • Craftsman 15" Mod. 137.229150 Drill Press • Craftsman 10" Radial Arm Saw & Accessories • Sears/Craftsman 10" Mod. 113.298762 Table Saw • Craftsman 6" Disc Sander Mod. 351.215140 & ACCU-CRAFT Workbench • (New) Dewalt Finish/Nailer Mod. D51256K • PRO-TECH Mod. 3203 9" Band Saw • Dayton Mod. 3Z350 AC Arc Welding Machine • Powercraft & Craftsman Sanders • Chicago Hammer Drill • Craftsman 4HP 25 Gallon Air Compressor • Craftsman 6.0hp 16 Gallon Shop Vac • Dayton Propane 150,000 BTU Salamander • Strong Arm Angle Grinder, Drill Doctor, Hole Saw Kit & Discs • Craftsman Scroll saw, Heat Gun & Skisaw • Cen-Tech 4 in1 Portable Power Pack • Industrial Organizer • Wright 1/2 Ton Chain Hoist • RR Iron & RR Jack • Floor Jack 4000lb • Jack Stands • Chicago Battery Charger & Craftsman Work Light • Utiltech Sump Pump 1/2 HP • 3 pcs of Uncut Cherry Logs • Large qty misc lumber • (28) Sheets Press Board 44" x 8' • Small qty of hardware/nails • Pipe & Crescent Wrenches • Misc Hand Tools • Plastic & Metal Shelving • & More!

ANTIQUES • PRIMITIVES

• Edison Disc Phonograph Model C19 (Working Condition) • Silk Pledge of Allegiance Banner • Antique Library Table • 9 Drawer Knee Hole Desk • Childs Rocker • Bontempi Electric Organ • Gilbert Helicopter Erector Set • Cameras • Snack Sets • Graniteware • Enterprise Sausage grinder • Tower, Radiant Projector Screens • Child's Outfit • Ice Skates • (3) Chicken Crates • 25+ Crates & Shelves • Scythes • Forks • Block & Tackle • Hand Tools • Kendallville Advertising Bottles • Fans • Kitchen Aid Coffee Mill • Fulton Corn Sheller • Canning Jars (blue & clear) • Wood Ladders • 50+ Wood Windows • 9 Wood Doors • Chipped Paint Table • 5 Leg 7 Leaf Dining Room Table • 2 Man/Buck/Crosscut Saws • Stucky Bros Maytag Double Wash Stand & Galvanized Tubs • Galvanized Buckets • Pair of Wooden Oars & much more

FURNITURE • HOUSEHOLD

• 2001 Frigidaire Upright Freezer • La-Z-Boy Leather Recliner • 4 pc Bedroom Suite Full Bed Frame w/Leath Celeste Mattress • 4pc Bedroom Suite Full/queen bed frame w/Ortho Pillow Plush Mattress • Twin Size Bed & Oak Headboard w/Southerland Luxury Rest Mattress • Nautical Home Decor • Child's Table & Chairs, Bunk Bed, Baby Beds, Stroller, Car Seat & Toys • Baskets • Glassware • Fabric, Linens, Yarn, bedding • Kitchenware • Tea Cart • TV Trays • Pictures & frames • Luggage • All American Pressure Cooker Model 925 • Small Kitchen Appliances • Electronics: TomTom, Cobra Walkie Talkies, Yamaha Subwoofer, Paradigm speakers • Tasco Telescope • Hats • Floor & Table Lamps • Frameless Mirror • Magazine Rack • Oak Entertainment Center • Swivel Rocker • Leather Swivel Rocker • Oak Roll Top Desk (Ashley Furniture) • Harlequin Sofa Sleeper • Oak Bookcase • Glass Door TV Stand • 2 Vanities • 3 PC Matching Chest of Drawers/Dressers • Montgomery Ward Air-Hockey Game • Valley Manufacturing Bumper Pool



PREVIEW:
Friday, January 22
10am - 6pm

LOAD OUT:

Saturday, January 23rd
3pm-6pm (Day of Sale)

Sunday, January 24th
1pm-4pm

Loader Not Available!
Come Prepared!

Payment: All Payments may be made onsite at time of pickup in the form of cash, check or credit card (4% surcharge fee on CC).

- All Payments to be made by Sunday January 24th • 4pm -

- Walk in Payments at Main Office Not Permitted due to current circumstances -
10% Buyers Premium Applies
Absentee Bid Forms Available

SELLER: ZOLMAN ESTATE
AUCTION MANAGER: Phil Wolfe,
260-248-1191 (AU19900139)

SCHRADER
Real Estate and Auction Company, Inc.



800-451-2709 • Visit SchraderAuction.com for Updates