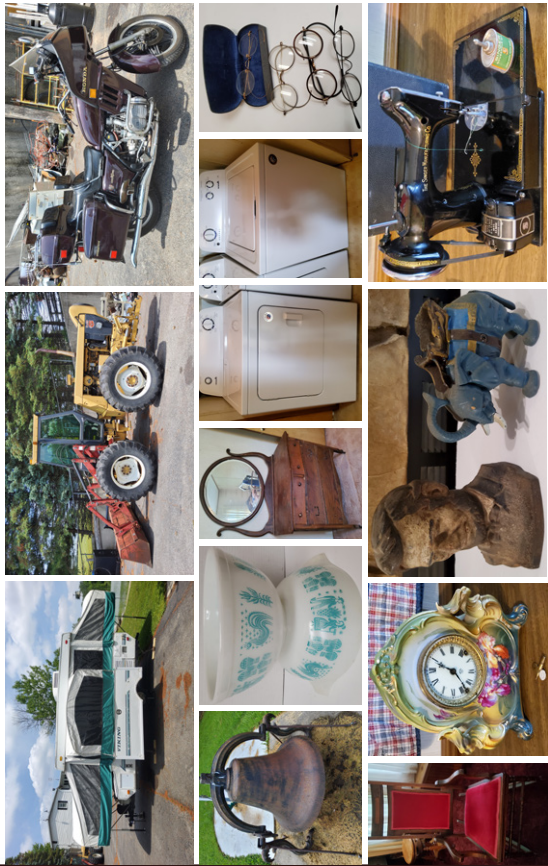


Timed Online Only Auction

2222 Wayne St. Auburn, Indiana

Corporate Headquarters:
950 N Liberty Dr, Columbia City, IN 46725
800.451.2709 • www.SchraderAuction.com



Timed Online Only Auction

2222 Wayne St. Auburn, Indiana



Thursday, June 23 • 10am

- Antiques • RR Lanterns • Games & Toys • Advertising Signs
- Household & Collectibles • Convalescent Aids • Guns & Ammo
- Shop/Lawn & Garden • Kayaks & Boats • Zero Turn/Lawn/Golf Carts
- Tractors & Implements • Trailers • Ford & Chrysler



800.451.2709
www.SchraderAuction.com



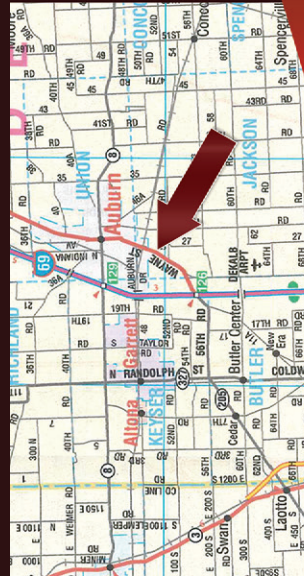
JUNE										
SU	M	TU	W	TH	F	SA				
			1	2	3	4				
5	6	7	8	9	10	11				
12	13	14	15	16	17	18				
19	20	21	22	23	24	25				
26	27	28	29	30						



AUCTION MANAGER: Phil Wolfe • 260.248.1191 #AU19900139
Schrader Real Estate and Auction Company, Inc. #AG3001504



Follow us on:
f b YouTube



PREVIEW:
Wed, June 22
from 3-6pm



Timed Online Only Auction

2222 Wayne St. Auburn, Indiana

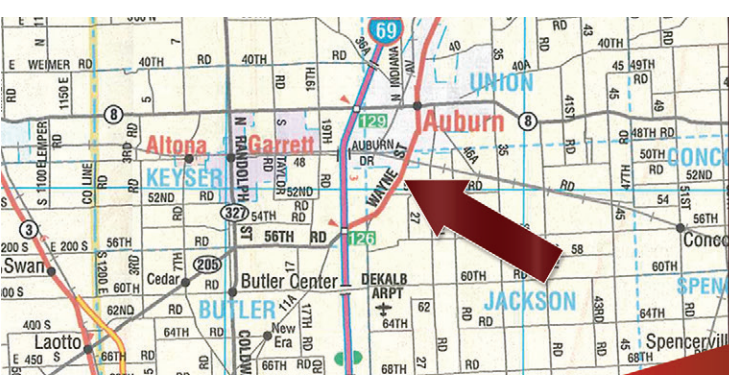


Thursday, June 23 • 10am

- Antiques • RR Lanterns • Games & Toys • Advertising Signs
- Household & Collectibles • Convalescent Aids • Guns & Ammo
- Shop/Lawn & Garden • Kayaks & Boats • Zero Turn/Lawn/Golf Carts
- Tractors & Implements • Trailers • Ford & Chrysler



800.451.2709
www.SchraderAuction.com



Timed Online Only Auction



PREVIEW:
Wed, June 22
from 3-6pm

LOCATION OF ITEMS: 2222 Wayne St, Auburn, IN 46706

From the intersection of SR 8 and South Jackson Street near the Auburn Court House, head south on S Jackson St for half a mile. Then angle west onto Wayne Street for half a mile. The property will be on your left.

AUCTIONEERS NOTE: Burt & Elsie Dickman were a staple in the Auburn community with Mr. Dickman serving as Mayor 1984-1991, City Councilman, Active Auburn Cord Duesenberg Club Member, he and his wife (Elsie) were the founders and co-owners of Auburn Homes and the large West Edge Park Manufacturing Housing community, member & president of Auburn Kiwanis Club since 1966, a collector of Auburn memorabilia & much more. This is an outstanding auction that warrants your attention, truly something for everyone. Don't miss this great opportunity to bid your price!



ANTIQUES

• 30" Antique Cast Iron Bell • 1963 Red Mark \$5 Bill • Carnival Glassware • Antique Red Velvet Upholstered Rocking Chair • Mission Style Floral Pattern Rocking Chair • 1900's Estey Co. Brattleboro, VT Walnut Pump Organ • Ansonia Porcelain Bonn Germany Mantle Clock w/Key • Carnival/ Etched Vase Wall Pocket Scones • Campbell's Kids Soup Spoons, Tasco Opera Glasses, Bisque Doll • Cast Elephant Bank & Abraham Lincoln Door Stop • Singer Catalog 3-110 Featherweight Sewing Machine w/Case • JC Penny Model 6915 Zig/Zag Sewing Machine • Sewing Notions, Patterns, Supplies, Buttons • 4 Drawer Dresser w/Oval Mirror • Hankies, Scarves & Aprons • Spectacles • Red Toy Fire Truck Ride on Cruiser #891 Hook & Ladder • Double Base Dining Room Table & 6 Chairs • Pyrex Amish Butterprint Mixing Bowls • Coin-Op O.D. Jennings Way Today Floor Scale • Cast Iron Reading Hardware Co. Apple Peeler No. 78 • Malleable Cast Iron Shoe Lasts & Shoe Forms • Cast Iron Hand Crank Corn Sheller • Griswold Square Fry Skillet & Cast Iron Pan • Brass Horns Made in Pakistan • 17.5" Grinding Stone • RR Lanterns: Genesy & Armspear, Adams & Westlake RR Lantern: (1) Red Globe • Red Coleman Lantern & Dietz Syracuse NY Lantern • Dressel RR Signal Lantern, Arlington NJ • Copper Kettle on Stand w/Bale & Paddle, 26" • Lightning Rods • Turn of The Century Floor Safe • Vintage Snack Sets • Dynaware & Corningware Blue Cornflower Pattern Ovenware • 1971 Superman Poster & 1978 Chalkboard • 9A Radio Flyer Wagon • Brass Washboard by Carolina Co. • Men/Woman Costume Jewelry: Necklaces, Bracelets, Earrings, Broaches, Belt Buckles, Cufflinks • Vintage Barbie Dolls • Way Rite & American Family Scales • Blue Crown 5 Gallon & 12 Gallon Cocks, USA • Antique UHL Pottery Co. Acorn Wares Indiana 10 Gallon Crock • Architectural Pcs • Vintage Cameras & Accessories • Smith Corona Typewriters • Music/Song Books: Gene Autry, Roy Rogers • 1940's Children's Activities Books, Jack & Jill Magazines • Litho Valentines Album • Gunsmoke Matt Dillon Holster • Frye's New Advanced Geography Indiana Book • Ganz Berlin/Eine Mark & German Menus • Vintage Radios: Philco, Motorola • Renown Roto- Wheels • View Master & Slides • Tru-View Stereoscope w/Film Strips • Road Runner, Plaid & Black Dome Lunch Boxes • Vintage Games: Twister, Operation, Shenanigans, Hocus Pocus, Swivel, Nerf Pool/Ping Pong & Slap Stick, Battle Board, Auburn Our Town, Mic/Mako, Geography, Guidance Town, Burglar Alarm, Tree Kit, Dick Tracy, Yahtzee, Aurora Glow in the Dark Creature, WWII Jeep, Aurora USS Independence Aircraft Carrier, Honda Road Racer, Trigger Jet Thunderbird, Crime Buster Police Gun, Tudor Players Hockey All Star Model, Puzzles, Strombecker Road Racing Set, 1970's Coleco Telstar Ranger, Hotwheels Super Charger Sprint Set by Mattel, 1970's Ideal Rebound Two Cushion Game, RC Helicopter & Transmitter, Charger & Radio • Auburn Rubber Toys: Cars, Motorcycles, Tractors • Nylint Ladder Fire Trucks, Vacationer, Buddy L Emergency Truck, Structo Farm Truck, Horse Trailer & Dump Truck • Victrola, True Tone Record Players, Vintage Radios & Misc. • 1960's Boys Life Magazines • Roller/Ice Skates • Retro Fiberglass Orange/Tan Scoop & (5) Virco Retro Orange Chairs • Soap Box Derby Wheels, Nail Key, Milk Can & Blue Brand Crate • Advertising Signs: Auburn Indiana American Legion Metal Sign, 20" x 30", Mid States Fence, Crawfordsville, Indiana Metal Sign, 12.5" x 5.5", Metal Coke Sign, 10" x 22", Porcelain Private Property No Trespassing Sign, 20" x 14"

HOUSEHOLD/COLLECTIBLES

• 2012 Frigidaire Refrigerator • 2007 Kenmore Side by Side Refrigerator • Amana High Efficiency Washer & Electric Dryer • Samsung 50" Flat Screen TV & Entertainment Center • (9) Hoozo Model HZ0010 Tablets (2/New in box) • 52" Flat Screen Sharp TV • Sharp Blu-Ray Disc Player • Monster Power HTS1650 Outlet Home Theater Surge Protector • Swivel Rockers, Catnapper Lift Chair, La-Z-Boy Rocker/Recliner • Small Kitchen Appliances: Oster Electric Food Grinder & Lexington Punch Set, Instantpot, Coffee Makers, Toasters, Electric Knives, Dehydrator, Slow Cooker, Ice Cream Maker & Much More. • Convalescent Aids: Invacare Reliant 450 Lift, Ki Mobility Catalyst Wheel Chair, Air Hawk Mobility Scooter, (2) AmeriGlide Summit Chair Stair Lifts, Canes, Walkers • Full Size Corunna Bed w/Brass Headboard • Twin Sealy Posturematic Covenant Elite Beds • 2 Pc. Stylemaker Bedroom Set & Side Table • Round Top Kitchen Table & 4 Chairs • Oak Roll Top Desk • Large Qty of Bedding, Linens • Dishes, Glassware, Storage Containers, Silverware

GUNS/AMMO

• Remington Model 870 .12 Ga. Shotgun, S/N W289384M • Winchester Model 61 .22, Pump, S.L. LR. • S & W .38 Special Revolver • Colt Army Special. 38 Revolver, S/N 10352, w/Grizzly Scene Hard Case • Glenfield Mod. 20 .22, S, L, LR, S/N 27489031 • Daisy Pump, Daisy Model 188, Crosman PowerMaster 66, Daisy Powerline 856 .177, Daisy Model 111B, Daisy Model 105 Pellet/BB Guns • Parris Kadet Model K-21 Trainer Rifle • Pocket Knives: Case, Cherokee, Imperial England, Germany • Russian Soviet Army Air Force Military Ushanka Siberhat • Bestguarder Digital Night Vision Monocular 6x50 • Bushnell Cam, Jason Binoculars, Holsters, Long Rifle Soft Gun Sleeves, Ammo Boxes • Marlin 3-9x32, BSA SW4X32CP, Crosman, Tasco & Vivitar Scopes • Ammo: (2) Boxes Remington 303 British Cartridges, 3-D 9 MM, Federal .20 GA, Winchester .38 Special, Remington 30-30, Winchester Olin .38 Special • PillarLock ProMax Hard Case & 4 Gun Rack • Targets & Arrows • American Hunter Tripod Feeder

SHOP/LAWN & GARDEN

• Underwriters Laboratories Ladder • Craftsman Shop Vac • Hammock & Stand • Folding Lawn Chairs/Loungers • Patio/Porch Swings w/ Stand • Weber & Turco Table Top/Portable Gas Grills, Propane Tank • Canning Jars, Lids & Misc. Supplies • Giant Swans, Underwater Soccer, Tire Tube Rafts, Noodles, Vests, Dacor, Pacifica Flippers, (4) Hydro-Tone Aquatic Resistance Weights, • Commercial Trash Container • Igloo/ Coleman Coolers • (3) Yellow Plymold 4 Person Booths • Motor Guide 30LB Thrust Trolling Motor • Sentry Safe & Honeywell Anti-Theft Safe • Assorted Lumber, Styrofoam Sheets • Uni-Matic Dispensers • Test Rite Mod 119 Bench Grinder • Pro-Tech 6" Mod 71028 Bench Grinder • 8' Werner Ladder • Aluminum Step Ladder • Oswego Ski's • Steel/Mesh Picnic Table • Cement Urns • (55+) Metal Folding Chairs • Charcoal Smoker, Turkey Fryer, Charcoal, Chips & Misc. • Wood/Metal Garden Benches • Vintage Waterski Binding Parts & Misc. • Edsbyn Snow Dance XCII Ski's & Bamboo Poles • Pair of Oars & Paddles • (4) Firestone Tires 7.00-16, 6.50-16 • Honda 3500 Generator • Vector Power Inverter, new in box • Corded/Battery Operated Tools • Husky Pancake Compressor • Honda GX 270 Gas Motor, w/ Transfer Pump • Craftsman 2 Gallon Sprayer • Makita LS 1030 10" Miter Saw • Ai- Mate Emglo Twin Stack

Air Compressor • Jumper Cables • Generac Power Systems Breaker Box • Romex 14-2 NM-B 250' (new) • Tornado 18V Pole Saw • Stihl FSE 60 Electric Weed Eaters • 4000 LBS. Hyd. Floor Jack • Pintle Hitches & Reese Receiver, w/2" Ball • Masterbuilt Hitch-Haul Expandable Rooftop Cargo Bag • AFO Fire Extinguisher Balls • Scaffolding • Hitch Haul Cargo Carrier • Stanley Axe • Harris Flow Meter Regulator AR-HE-N2 3000806 • Craftsman 1700 Electric Power Washer • Jelco Road Case, 58.5" x 12.5" x 52.5" on Wheels, S/N 12183 • Plastic Sheetting: 3,4 & 6 MIL • Schumacher, Ship Shore Chargers • Ever Start & Motorcycle Battery Chargers • Larin 2 Ton Jack Stands • MVP Super Lift 6 Ton Jack Stands • Aluminum Jack Stands • Tornado 2000LB 12 Volt Winch • Log Chains • Wheelbarrows • Pull Behind Lawn Trailer w/Tilt Bed • TSC Truck Tool Box • 16' Playground Slide • Swing Set

KAYAKS/BOATS

• Kayaks: (2) 8' ESP Kayaks & Paddles • Viking 16' Fiberglass Canoe • MonArk 14' Flat Bottom Boat

ZERO TURN/LAWN/GOLF CARTS

• Simplicity ZT3500 Zero Turn Mower, 48" Deck, shows 186 Hrs. 25hp. B & S Commercial Motor Running/Working Condition • 2017 Dixie Chopper Zee 2 Zero Turn Mower, 48" Deck, shows 450.5 Hrs. Kawasaki FR691V Motor, Extra Pr. Heavy Tread Tires/Rims, 1 Extra Front Tire/Rim, Running/Working Condition • DR Trimmer/Mower, Model TR47087BEN, 2018, working condition • DR All Terrain Mower ATM19722 & Attachment • Toro Power Curve Snow Blower 18" • Earthquake MC43 Mini Cultivator • 1994 Club Car Golf Cart, SN A0029-909400, battery charger, running working condition • 1995 EZ Go Golf Cart, battery charger, running working condition • 1981 Honda Goldwing • Viking 8 person pop up camper w/ 1 slide out • Craftsman lawn sweeper

TRACTORS/IMPLEMENTS

• John Deere 401B Diesel Tractor, shows 65761 Hrs. 3 Pt. WF, 540 Pto, Firestone 16.9-28 Rears, Bridgestone LT245/75R16 Fronts, S/N 606528T, Running Condition • Ford New Holland 9030 Versatile Tiger, Bidirectional, Quick Attach Front/ Back, Front/Rear PTO, w/Versatile 2360 94" Bucket, ROPS Cab, Service/Parts Records • 3 Pt. Hitch Attachment w/Insert, 2 5/16" Ball • TSC 3 Pt. AUGER Attachment w/ 8" & 10" Augers • Ford 22-125 Flail Mower • 10' Gears Big Foot 3 Pt. Rotary Mower • FMC Bolens Garden Tractor 33" Rotary Tiller • 6' Gill SU-100 Pulverizer • 6' Massey Ferguson MF-18 Box Blade • 2019 Behlen Country 3PT HD Trailer Mover • WorkSaver Versatile/Ford to Skid Steer Adapter • Accessories Unlimited 2 Stage Twin Auger 3 Pt. Snowblower, 108", Mod # AU-01-5000, S/N TA000000498 • 8' model # RHFAP/W8 Sweepster Rotary Broom

TRAILER

• 1986 20' Stryker Tandem Axle Enclosed Trailer/C ar Hauler, 24' overall length, fabricated by Stryker Welding, Ohio, 40 Ton Power Winch, Hitch, Sway Bars, VIN # MVIN66198IND (Indiana Title & Bill of Sale)

FORD/CHRYSLER

• 1997 Ford E-350 Wagon/Van, 176,219 miles, 4 Door Van; Extended, RWD, V8, 5.4L (330 CID); SOHC 16V; EFI, Gasoline, 235-260HP, w/Turtle Top, VIN #: 1FBJS31L4VHB60629 Indiana Title • 2005 Chrysler Town & Country Van 85,522 miles, 4 Door Van; Extended, FWD, V6, 3.8L, Gasoline, VIN #: 2C8GP64L75R229546 Indiana Title



Lots Start Closing Thursday, June 23 • 10am



800.451.2709

www.SchraderAuction.com

PAYMENT: Payments may be made online or onsite in the forms of cash, check or credit card (4% CC surcharge applies) on Thur, June 23 from 4-7pm or Fri, June 24 from 9am-4pm or by calling main office for ACH & credit card payments both days during normal business hours @ 260-244-7606 all payments need to be made by Fri, June 24 by 4pm.
10 % BUYERS PREMIUM APPLIES
NOTE: Please check e-mail & junk mail for invoice, and add auctions@schraderauction.com to your preferred sender list if you believe you have won items, but have not received an e-mail within 1 hr. of auction ending, call main office @ 260-244-7606. Text messages will be sent only as a reminder of pick up, not what lots bidders have

won. It is the buyers responsibility to contact the auction company. Land lines slow down the process of contact. Please list cell phone # during registration.
LOAD OUT: Thur, June 23 from 4-7pm or Fri, June 24 from 9am-4pm & Sat, June 25 from 9am-12pm (noon). 3 day load out only! Loader available only Thur, June 23 & Fri, June 24!! Loader tractor not available Sat, June 25. Loader on reserve only Thur, June 23 & Fri, June 24. Plan accordingly, staff is limited/come prepared/auction company does not provide boxes & packing. This is a large auction & staff is limited to only providing locations of items, not loading items other than what requires loader tractor.
SHIPPING (SMALL ITEMS OR LARGE ITEMS): Shipping is available through 3rd party shipper - Columbia City Going Postal, 1080 Spartan Dr, Suite A, Columbia City,

IN 46725, Ph: 260-248-8608. Call for quote prior to bidding. Auction company is not responsible for taking items to going postal or to the main office. Auction managers discretion. All shipping & handling costs are the responsibility of the buyer and said shipping/handling is between buyer & Going Postal, not the auction company.
FIREARMS: All firearms (excluding black powder) will be handled by Auburn Arms, Inc. 401 West Auburn Dr, Auburn, IN 46706, Ph: 260-413-6148 (no exceptions). \$25 Transfer fee applies, call for hours of business & shipping/handling info Ph: 260-413-6148. Do not send FFL information to auction company, communicate all FFL in state & out of state questions & information directly to Auburn Arms, Inc. 260-413-6148.