



Switzerland County, IN

Heritage Hill FARM INC.
Vevay, Indiana

Retirement AUCTION

SCHRADER
Real Estate and Auction Company, Inc.

CORPORATE HEADQUARTERS:
950 N. Liberty Dr., Columbia City, IN 46725
CENTERVILLE OFFICE:
300 N. Morton Ave., Centerville, IN 47330

Auction Manager:
Andy Walther,
765-969-0401

AC63001504, AU19400167
TERMS: Cash or Check w/proper ID. 3.5% surcharge fee for credit cards. Announcements made the day of the auction take precedence over any printed material. Not responsible for accidents.

800.451.2709
SchraderAuction.com

DECEMBER 2022

SUN	MON	TUE	WED	THU	FRI	SAT
				1	2	3
4	5	6	7	8	9	10
11	12	13	14	15	16	17
18	19	20	21	22	23	24
25	26	27	28	29	30	



Switzerland County • Vevay, IN

11169 Bennington Pike,
VEVAY, IN 47043



Retirement AUCTION

Heritage Hill FARM INC.
Vevay, Indiana

TRACTORS • JD GATOR • FORKLIFT • COMBINES & HEADERS • JD PLANTERS
SEED TENDER • TILLAGE EQUIPMENT • 28% APPLICATOR • SEMIS • HOPPER BOTTOM
TRUCKS • TRAILERS • SPRAY TRAILER • NURSE TANK • POLY TANKS • MOWER
BUSH HOG • GRAIN CART • AUGERS • SHOP EQUIPMENT • MORE

Monday, December 19th at 10:30am

800.451.2709
SchraderAuction.com

LIVE INTERNET BIDDING
Visit SchraderAuction.com for Details
or call 800-451-2709.



Switzerland County • Vevay, IN

11169 Bennington Pike,
VEVAY, IN 47043



Retirement AUCTION

Heritage Hill FARM INC.
Vevay, Indiana

Monday, December 19th at 10:30am

TRACTORS • JD GATOR • FORKLIFT • COMBINES & HEADERS • JD PLANTERS
SEED TENDER • TILLAGE EQUIPMENT • 28% APPLICATOR • SEMIS • HOPPER BOTTOM
TRUCKS • TRAILERS • SPRAY TRAILER • NURSE TANK • POLY TANKS • MOWER
BUSH HOG • GRAIN CART • AUGERS • SHOP EQUIPMENT • MORE

800.451.2709
SchraderAuction.com

LIVE INTERNET BIDDING
Visit SchraderAuction.com for Details
or call 800-451-2709.



Switzerland County • Vevay, IN

11169 Bennington Pike,

VEVAY, IN 47043

Retirement

AUCTION

Heritage Hill FARM INC.
Vevay, Indiana

Monday, December 19th at 10:30am



PREVIEW: Monday, December 12th • 11am - 5pm

TRACTORS

- **2008 John Deere 9330 4x4 Tractor** PS Transmission, 1000 PTO, 3pt. arms, (4) SCV remotes, (8) Goodyear 620/70R/42 tires, Quick-hitch, hammer strap, *NEW JD ENGINE in 2018, Only 800 hrs. on new engine, 4,597 total hrs, *RW9330P002558**
- **2012 John Deere 8285R MFWD Tractor**, ILS front suspension, PS trans, (4) SCV remotes, 60 GPM hyd. Pump, (10) Front weights, Active seat, Firestone 480/80R/46 rear duals, 380/85R/34 front duals w/fenders, hammer strap, 1000 PTO, 10" Display, 2,485 hrs, *1RW8285RHCP062933*
- **2013 John Deere 7230R MFWD Tractor**, ILS front suspension, IVT Transmission, (5) SCV remotes, 60 GPM hyd. Pump, (12) Front weights, (1) pair 625kg & (1) pair of 150kg rear wheel weights, Active Seat, Firestone 480/80R/46 rear duals, 420/90R/30 front tires w/fenders, Quick hitch, hammer strap, 1000 PTO, 10" Display, 1,860 hrs, *1RW7230RKDD013330*
- **1991 John Deere 4955 MFWD Tractor**, PS Transmission, New PS transmission in Dec. 2021 at 6,244 hrs, (3) SCV remotes, (20) Front weights, (1) set of rear wheel weights, 18.4R42 rear duals, 16.9R28 front tires w/fenders, Quick hitch, hammer strap, 540/1000 pto, 6,349 hrs, *Very sharp, *RW4955P007155**
- **2006 John Deere 6715 MFWD Tractor**, Power Quad Transmission 16F/16R, 740 JD Classic loader w/bucket, Left-Hand Reverser, foot throttle, Goodyear 380/85R28 fronts & 480/80R/38 rears, Open Station, (2) SCV Remotes, 540/1000 pto, *showing 1,405 hrs (believed to have 2,500± total hrs), *L06715D496263**
- **1976 INTERNATIONAL 1066 Black Strip Tractor**, 2wd, (2) hyd. Remotes, dual 540/1000 pto, (4) sets of split rear wheel weights per side, 20.8-38 rears, 11.00-16SL steer tires, *2610178U058882*
- **IH suitcase weights**, Various wheel weights of different makes
- **20.8-38 Duals**

JD GATOR - FORKLIFT

- **2013 John Deere 825i XUV Gator**, 4x4, gas, power-steering, hydraulic dump bed, front and rear windows, Premium bucket seats, *Only 295 hrs*
- **TOYOTA Fork Truck**, Model 52-FGU30, 3 stage mast, gas, 6,000 lb



COMBINES & HEADERS

- **2013 John Deere S680 4WD Combine**, Power fold hopper, ProDrive Transmission, ContourMaster Feederhouse w/ Command Touch 5 speed drive 22.5' unload auger, Chopper, 10" display on armrest, 1250/45/32 Flotation drive & 750/65R/26 steer tires, 2348 Engine / 1582 Separator hrs, *1H0S680STD0757665*
- **2011 John Deere 9870 4WD Combine**, Command touch Multi-speed Drive System, ContourMaster Feederhouse w/reverser, 22.5' unload auger, Bin extensions, Chopper, 7" display on armrest, Cab Camera System, 1250/45/32 Flotation drive & 28L-26 steer tires, 2719 Engine / 1857 Separator hrs, *1H09870SKB0740691*
- **2018 John Deere 640FD 40' Hydra-Flex DRAPER**, flip-over reel, poly skid plates, stubble lights, *only 4000 acres, *1H0640FDHJ0800815**
- **John Deere 635F 35' Hydra-Flex auger head**, flip-over reel, poly skid plates, new poly lining, stubble lights, field ready, 3" rock dam, *1H0635FJA0740242*
- **JD 612C 12 x 30" ROW CORN HEAD**, Hydraulic deck plates, w/stalk stompers, field ready, *1H00612CVEX766340*
- **JD 1293 12 x 30" ROW CORN HEAD**, Hydraulic deck plates, w/stalk stompers, field ready, *H01293X700759*
- **CRARY 35' Air Reel • 12- Row Corn Reel**
- **J & M 42' HEAD CART 4WS15**, all wheel steer, lights, 235/85R/16 tires, extendable tongue
- **Unverferth HT-36 HEAD CART**, extendable tongue
- **Unverferth HT-30 HEAD CART**, extendable tongue
- **EZ-Trail 680 HEAD CART**, extendable tongue



JD PLANTERS - SEED TENDER

- **2020 JOHN DEERE 1775NT 12R30 PLANTER**, Corn Planter, MaxEmerge 5 package, 2 pt. hitch, single disc fertilizer, Red Ball liquid indicator, 3 bushel seed boxes, Pneumatic down pressure, half-width disconnect, pro-shaft drive, 1 cast & 1 rubber tire closing wheels, *excellent, ONLY 2,499 acres, *1A01775YTNM795516**
- **2018 John Deere 1990 CCS 30' Air Drill**, 7 1/2" spacing, rubber seed firmer / (1) steel closing wheel, *excellent iron, 4,714 acres, *1A81990DC-JF775164**
- **JOHN DEERE 1590 No-till Drill** w/markers, 15' 7 1/2" spacings, JD markers, *NO15190X701261
- **AG SYSTEMS AG6300 11-Knife 28% Applicator**, Hydraulic drive, Knife injectors, Red Ball indicators w/ John Deere Green Star rate controller, 320/85R/38 tires, 1000 gallon tank, *1739*
- **LANDOLL 25' Tillage**, walking tandem main frame, 3 bar spike tooth harrow, flat bar rolling baskets, one-pass tool
- **GLENCO Soil Saver Disc Chisel**, 9-shank, good iron

SEMIS - HOPPER BOTTOM - TRUCKS - TRAILERS

- **2005 MACK Vision Day Cab, CXN 613**, Eaton Fuller 10 speed transmission, aluminum outer rims and new steer tires, *648K miles*
- **2002 VOLVO Day Cab**, ISM 425hp engine, Eaton Fuller 9 speed transmission, Wet Kit, all Aluminum inner and outer rims and new steer tires, 11R22.5 tires, 40:145 axle ratio, *563K miles*, aluminum fuel tanks & full fenders, VIN#4V4K-C9UH52N317853
- **2020 EBY "Generation" Hopper Bottom**, Ag hoppers, 40'x96"x66", electric tarp, electric hopper gates, *Excellent, 1 Owner*
- **2006 DODGE RAM 3500**, 4x4, dually, flatbed, fifth-wheel hitch, *200,560 miles*
- **2006 RICE Flatbed trailer**, 14k lb. tandem axle, 25' (20'+5' dovetail), fold-down ramps, 23.5/85R/16 tires, spare tire, VIN#-4RWDB25247N034448
- **1986 FREIGHTLINER Tri-axle Grain Truck**, Air brakes, w/Scott LL3000 level lift hoist, 800± bu. Steel bed
- **1984 FRUEHAUF Aluminum Dump Trailer**, 30', air brakes, poly-lined

SPRAY TRAILER - NURSE TANK - POLY TANKS

- **1977 HYSTER C35TA Flat deck trailer**, tandem axle duals, removable ramps, Sold with 3,200 gallon banded tank, inducer tank, Honda 3" transfer pump with all hoses
- **CLARK 1,000 gallon Nurse tank** on tandem axle gear, pin hitch, Snyder Industries poly tank, Honda transfer pump
- **(5) 2,500 gallon SII Poly Tanks**
- **(2) 2,500 gallon yellow Poly Tanks**
- **(2) 1,600 gallon yellow Poly Tanks**
- **(4) Transfer Pumps**

MOWER - BUSH HOG - MISC.

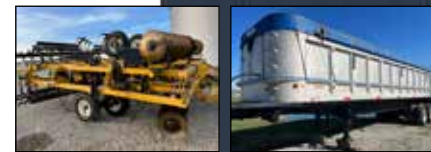
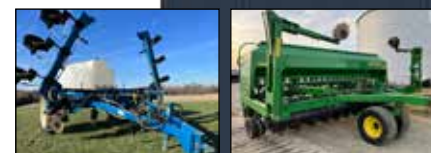
- **LANDPRIDE Plainsman RCR3515 ROTARY CUTTER**, 15' front chains, (6) solid rubber tires, 540 pto
- **JD 8' Grader Blade**, hydraulic adjusting
- **ARTS-WAY 2400 Plane land leveler**, Mod. V2400, extra 3pt. attachment spacer for clearance, *AWV2400013677*

JD TECHNOLOGY - RECEIVERS

- **John Deere GS 2630 display**, FS2, Autosteer
- **John Deere GS 2630 display**, FS1, Section control, auto-steer
- **(2) JD 3000 Globes**

GRAIN CART - AUGERS

- **KILLBROS 1950 Grain Cart**, Roll Tarp, Hydraulic adjust spout, 1050/50R/32 tires, Poly-lined unload auger, new bottom augers & clean-out door, 1000 rpm, *D52130108*
- **KSI Belt Conveyor Model 1208-32**, Honda GX270 engine, very nice, *9997*
- **Harvest International 1070 Swing-away Auger**, new flighting in 2021, hyd. Lift
- **BRANDT 1070 Swing-away Auger**, Hyd. Lift, hydraulic hopper wheels w/remote, *nice, *101058*
- **MAYRATH 52' x 6" Straight auger**, hydraulic lift, pto drive
- **SHOP EQUIPMENT - MORE**
- **Nice selection of shop equipment**, chains, binders, Ferguson Trencher, Smith Industrial Air compressor on trailer, more (watch website for updates)



NOTE: Eric and Tammy Welch have farmed together for over 40 years. They have recently made the decision to retire and rent out their ground. This is an EXCELLENT line of clean equipment that has always been stored inside. Plan now to participate in this auction. Both "In-person" and "Online" Bidding available.



LIVE INTERNET BIDDING
Visit SchraderAuction.com for Details
or call 800-451-2709.

800-451-2709 • SchraderAuction.com

OWNERS: Heritage Hill Farms, Inc. (Eric & Tammy Welch),
Equipment Questions: Eric 812-599-2520 | AUCTION MANAGER: Andy Walther 765-969-0401