

Equipment located at Various Places!
Reference Our Online catalog for exact locations!



Virtual **EQUIPMENT** AUCTION

CORPORATE OFFICE:
950 N. Liberty Dr., Columbia City, IN 46725
email: auctions@schraderauction.com

AUCTION MANAGERS:
Eric Ott, 260-413-0787
Robert Mishler, 260-336-9750
Mark Schroeder, 260-564-0570

AC63001504, AU11600071, AU08701553, AU12300016

TERMS: Cash or Check w/proper ID. 3% surcharge fee for credit cards. Announcements made the day of the auction take precedence over any printed material. Not responsible for accidents.

*Internet Buyers' Premium is 2.5% capped at USD \$750 per lot for Virtual Auction Items.

*10% Buyer's Premium per lot on Timed Online Items.

Follow us on:

800-451-2709

www.SchraderAuction.com



AUGUST 2025						
SUN	MON	TUE	WED	THU	FRI	SAT
					1	2
3	4	5	6	7	8	9
10	11	12	13	14	15	16
17	18	19	20	21	22	23
24	25	26	27	28	29	30
31						

• VIRTUAL BEGINS at 10AM EST •
• TIMED ONLINE - LOTS START CLOSING at 5PM EST •

ONLINE/VIRTUAL BID BY PHONE ABSENTEE BID

Virtual **EQUIPMENT** AUCTION

THURSDAY, AUGUST 7TH - 10 AM EST



Misc Items
Timed Online Only
LOTS START CLOSING:
Thurs., Aug. 7th
at 5:00 pm EST
See website for details



Virtual **EQUIPMENT** AUCTION

ONLINE/VIRTUAL BID BY PHONE ABSENTEE BID
THURSDAY, AUGUST 7TH - 10 AM EST

800-451-2709
SchraderAuction.com
See Website for more Information



And Timed Online Only AUCTION

LOTS START CLOSING AT 5PM EST

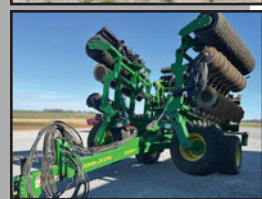
800-451-2709 • SchraderAuction.com • Schrader.Nextlot.com

Virtual **EQUIPMENT** AUCTION

THURSDAY, AUGUST 7TH - 10 AM EST

ONLINE/VIRTUAL BID BY PHONE / ABSENTEE BID

Equipment located at Various Places! Reference Our Online catalog for exact locations!



GARY PARKER ESTATE - (AG CRAWLER TRACTORS)

• CAT D4 crawler, diesel, 4 remotes, pto, runs • Oliver OC3 AG Crawler, gas, runs • CAT 30 AG crawler, gas, sand blasted & painted, runs • IH TD-8 AG crawler, diesel, pto, runs • CAT 22 AG crawler, gas, pto, needs magneto work • CAT 10 AG crawler, gas • Oliver 6H AG crawler, gas, rear winch, runs • CAT 60 snow crawler, complete engine rebuild • CAT 15 AG crawler, non-running • ATC crawler forklift, American Tractor Company built in Churubusco, IN, non-running • ATC Terra Trac GT 30 crawler, American Tractor Company built in Churubusco, IN • Cletrac Crawler tractor, non-running • CAT 15 AG crawler, non-running • CAT D2 AG crawler, diesel, non-running • IH TD-6 AG dozer, pto, diesel, gas pony motor, runs

TRACTORS

• 2022 JD 9R 390 4WD tractor, 3pt, pto, 5 remotes, (2) power beyond, Heat-ed/cooled seat, refrigerator, command center, 480/80R46 duals, 562 hrs, like new • JD 9370R tractor, 4WD, powershift, 5 remotes, hi flo hydraulics, large 1000 pto, Gen 4 Command Center w/ activations, leather seats, w/ Starfire 6000 globe, 620/7042 tires • 1997 JD 8300 tractor, MFWD, powershift, 3 remotes, big 1000 pto, 3pt w/ quick hitch, hammer strap, buddy seat, 14 suitcase weights, 20.8R42 rears & hub duals, 16.9R30 steers, 5395 hrs • 2016 JD 8245R tractor, powershift, 4 remotes, 5648 hrs • 2016 Kubota MX5200 4x4 compact tractor, 3 range hydro, 540 pto, 3pt, folding ROPS, 319 hrs • White 2-155 tractor, 2 remotes, small 1000 pto, duals, (9) suitcase weights, 5151 hrs showing • CIH 5250 loader tractor • Case 2294 tractor, small 1000 pto, ept, 2 remotes, 6 suitcase weights, partial powershift, LED lights, 18.4-38 rears & hub duals, 5050 hrs showing • Farmall Super M tractor • Allis Chalmers WD tractor, narrow front, 540 pto, snap on coupler

COMBINES - HEADS - PICKER

• 2015 JD 5680 combine, 4x4, power tail board, contour master, power bin, long unload auger, single point hookup, refrigerator in cab, camera on rear & on unload auger, JD 3000 globe & JD 2630 w/ full auto steer included, 650/85R38 duals, 750/65R26 steers, 3604 engine/2656 separator, inspected annually by JD dealer, excellent maintenance & up keep • 2012 CIH 7130 combine, straddle duals, rock trap, chopper, AG Leader ready, 4483 engine/3328 separator • 40' 2011 MacDon 2162 flex draper • 42' Unverferth AWS header cart • 2012 Geringhoff North Star Elite XL corn head, 8 row 30" • 24' Shelbourne Reynolds RX72 stripper head, Gleaner R/S series hookup, hydraulic raise hood, single point hookup • 31' Killbros UT130 header cart, extendable tongue, lights • Unverferth AWSP-30 All-Wheel steer head cart, suspension, lights, Firestone 320 tires, excellent condition • JD adapter face plate • CIH 2388 adapter face plate for Geringhoff • CIH flagship adapter face plate for Geringhoff • JD 7720 combine • JD 653 row crop head • 20' JD 920 grain table w/ homemade head cart, sprocket hookups • JD 4400 combine, chopper, diesel, needs batteries, radiator has been fixed & needs put back in the combine, barn kept, 4510 hrs • New Idea 327 2 row 30" corn picker, 12 roll husking bed, hydraulic swing tongue, extremely low acres

DRYER - AUGERS - GRAIN CARTS - GRAIN CLEANER

• Brock Sper B SD500V grain dryer, single phase, LP gas, Quantum touch screen computer controller, stainless steel, been under roof its whole life, meticulously maintained & cleaned, 6465 hrs, it is unhooked & ready to be loaded on your trailer, 1 owner • HandLair 566 grain vac, 60' hose & pipe, small 1000 pto • Killbros 490 grain cart • Brandt drive over pit, hydraulic drive, belt conveyors, manual grain flaps, 1 owner, excellent condition • Westfield MK 100-61 swing away auger, 10"x61', 540 pto • 8"x56' Westfield WR 80-56 grain auger, 10hp 220 electric motor w/ push button start/stop, top drive, excellent lighting, very little use, stored inside • Farm King 1036 unload auger, 10"x36', 15hp Baldor electric motor, very low use • Hutchinson 10"x71' swing away auger • Westfield MK130-91 Plus swing away auger • Westfield 130-71 swing away auger • Westfield 10"x62' swing away auger • Westfield 8"x62' swing away auger • Snowco grain cleaner w/ load auger & hopper • 28' x 8' Federal transport auger, 7 1/2 hp, 1 ph

TILLAGE

• 25' JD 2680H high speed disc, rubber roller conditioner, less than 2000 acres, always shedded • Sunflower 5055-50 field cultivator w/ 5 bar spike harrow, 50', spring cushion shanks w/ knock on sweeps & shank protectors, rear hitch & hydraulics, newer 320/70R16 walking tandem tires on main frame, gauge wheels, well maintained • 42' Landoll 9650 field cultivator, knock on shovels, 3 bar harrow, rolling basket, gauge wheels • Unverferth Zone Builder 132 5 shank inline ripper, 3pt, lights, gauge wheels, spring reset • 25' 2010 Sunflower 6333 soil finisher, chopping basket, knock on shovels, walking tandem on main frame & wings, 6 bar spike harrow, hydraulic disc gang, rear hitch & hydraulics • 30' 2018 Unverferth 1245D rolling harrow, lights, solid rear packer, gooseneck hitch, diagonal bar leveler • 2020 JD 2430 13 shank chisel plow, lights, dual gauge wheels, 12" spacing • 42' DMI crumbler, 5 section fold • 42' Rite Way land roller, 42"x5/8" drums • 30' Brillion XL Series X fold solid packer • Krause 9 shank Dominator 3650 disc ripper, new points, extremely low acres, excellent blades, well maintained • Blu-Jet 7 shank inline ripper, 3pt, gauge wheels, toggle trip, very good points & shins • Bush Hog 9 shank disc chisel • JD 7 shank V-plow • Brillion 6 row 30" row crop cultivator • 4x16 White 508 moldboard plow, mounted, hydraulic tail wheel, single buster bar harrow • 12' Blu-Jet compact disc w/ rolling baskets • 36' Kongskilde field cultivator, walking tandems on main frame & wings • 37' Unverferth 1225 rolling harrow • 25' IH 490 disc, rear hitch & hydraulics, excellent blades & bearings • 15' 3pt S-tine field cultivator w/ rolling baskets & buster bar • Case 513 7 shank V-ripper • Hiniker 30' 3pt rotary hoe, flat fold • IH 7 shank deep ripper, wear bars • Unverferth Zone Builder 5 shank spring reset, 3pt • Glencoe 9 shank disc chisel, rear hitch • M&W 1465 disc ripper w/ ridge leveler • IH 720 6 bottom plow, auto reset

VISIT SCHRADER.NEXTLOT.COM TO VIEW PHOTOS & BIDDING INSTRUCTIONS



PLANTING - CROP CARE

• JD 1790 16/31 split row planter, 1000 acres on row unit rebuild, JD XP row units, GBGI parallel arms, GBGI double disc openers, GBGI gauge wheel arms, 400 gallon fertilizer tank, Martin row cleaners on all rows, wing weights, 2020 Gen 3 monitor, Wave Vision seed tubes, furrow jets, conceal on corn rows, conceal brackets on bean rows, V-set V-drive meters, Delta down force, auto row by row furrow force closing system, Vapply section control on furrow jets, Vapply HD on corn rows for the conceal, Precision Planting air compressor for the furrow force, loaded planter, excellent condition • Meridian 225-RST seed tender, 2 compartment, fold over brush auger w/ spout control, Honda motor, tandem axle, good roll tarp, always stored inside • Parker Seed Chariot 3620 seed tender, scales, w/ digital head, electric swing belt conveyor, auto talc dispenser, 2 compartments, Honda 270 motor w/ electric start, very nice • 18' liquid tender bed for semi, 2500 gallon black poly banded tank, 13hp motor w/ electric start, 3" pump, 30 gallon inductor, wood plank deck, very nice • Yield 360 tractor tanks for JD 8R tractor, all hardware included, (2) 350 gallon tanks • 13 shank DMI 3250 NH3 applicator, 3pt, Hiniker rate control system (no monitor), (2) removable knife extensions, new hydraulic shut off, disc closers, gauge wheels • 13 shank DMI 5250 Nutri-placer NH3 toolbar, Raven single cooler, Raven 440 controller, up-to-date hoses, heavy duty spring shanks, disc sealers, set up to side dress, have wings & hydraulics to make it a 15 shank • (2) Blu Jet GDI 200 ground drive NH3 pumps, 1 season on rebuilt pumps • 11 knife liquid applicator, 1000 gallon tank • Ground drive John Blue LM4455 pump • Kinze 2000 20' planter frame, markers, 15 row units including (7) pusher units, brush meters, boxes • JD 7000 6 row planter, finger pickup, liquid fertilizer, row cleaners, HD down pressure springs, spiked closing wheels • Killbros seed wagon on Kory 6872 running gear, 18' J&M poly seed auger, tarp, 8hp Honda augermate • Parker 2600 seed wagon, hydraulic drive seed auger, tarp, extendable tongue • 1000 gallon poly tank w/ metal cradle, 2" banjo valves

TRUCKS - TRAILERS - BUS - AUTOS - CAMPER

• 2019 Kenworth W900L semi tractor, 565 X15 Cummins, 18 speed, air ride, 3.36 rear end gear ratio, sleeper, Kubota diesel APU heating & cooling unit, (10) new tires 5000 miles ago, 410243 miles, very nice • 2022 42' Eby hopper bottom, AG hoppers, air ride, electric tarp, 66" sides, less than 10000 miles, 1 owner, excellent condition • 2019 42' Timpte hopper bottom, AG hoppers, air ride, electric tarp, 66" sides, (4) brand new tires, low mileage trailer, excellent condition • 2016 40' Timpte hopper bottom, AG hoppers, air ride, DuraBrite aluminum rims, full stainless front & rear, 2 rows of 9 LED lights, front & rear ladders, roll tarp, only 25634 total miles, farmer owned & only used during harvest, never been in salt or snow, always kept in side, like new • 2009 Mack Pinnacle CXU613 tandem axle day cab semi, 395hp MP7 engine, 10 speed auto, spring ride, 383575 miles • 2004 Kenworth T300 single axle truck w/ 14' low pro dump bed, auto • 2006 IH 8600 grain truck w/ 18' aluminum grain bed, like new tarp & tires • 2009 IH Prostar day-

cab semi, ISX 450hp, 10 speed manual, 664472 miles • 2011 IH Prostar daycab semi, ISX 400hp, 10 speed manual, 618361

miles • 1981 IH F2674 tandem axle w/ air tag grain truck, N14 Cummins, 9 speed manual, 24'x90"x78" bed, air brakes, spring ride, 702960 miles showing • 1997 Jet 34' tandem axle hopper bottom trailer, 60" sides, 920 bushel capacity, new tarp & brakes 2 years ago, spring ride • 1994 22' single axle hopper bottom trailer • 2012 Ford F550XL Odyssey 14 passenger bus, V10 gas engine, auto, refrigerator, microwave, AC, 32750 miles, Nice • 1997 Galbreath 22' dump trailer, frameless barrel dump trailer, spring ride • 2006 IH 4300 box truck, DT466, Allison 3000 RDS w/ pto provision, Morgan 24' box w/ roll up door & Opac roof, 517135 miles • 2003 Ford F550 service truck, powerstroke, auto, 5000# crane w/ controller, engine driven VMAC air compressor, 255076 miles • 1998 Freightliner FL70 spotter truck, CAT 3126, auto, pto, hydra lift 5th wheel • 2019 Chevrolet 6500 box truck, Duramax diesel, Allison auto, Morgan 18' box w/ side door & rear roll up door, non CDL, 152053 miles • 2018 Hino 338 reefer truck, diesel, auto, Great Dane 20'6" reefer box w/ Thermo King diesel cooling unit w/ electric backup, 158691 miles • 2009 Kenworth T-3 cab-n-chassis, PX6 6.7 Cummins, auto, non CDL, 227762 miles • 2007 IH 4300 cab-n-chassis, DT466, Allison auto, 375650 miles • 2014 Freightliner M2 single axle semi, Cummins 8.3, Allison 3000 HS, air ride, 239875 miles • 2008 Peterbilt 384 single axle semi, 400hp CAT C9 motor, 10 speed Eaton, 563406 miles • 2011 20' tandem hopper bottom, spring ride, roll tarp • 1983 IH 51900 tandem axle grain truck, 20'x90"x66" grain bed w/ roll tarp, DT466 motor, 10 speed Eaton, air brakes, 470093 miles • 2017 GMC Acadia SLT SUV, AWD, 55000 miles • 2016 Ford Transit T-250, 200k miles, non-running • 2012 Ford F350 pickup, 4x4, V8 gas, needs transmission work • 24' 2000 Corn Pro gooseneck livestock trailer, electric brakes, center cut gate, nice • 9' Alum Line aluminum truck flatbed • 2005 Wildwood LE 28B camper, electric jack, new awning 3 years ago, AC

HAY & FORAGE EQUIPMENT

• 2021 John Deere C500 16' discbine, 2pt hitch, rubber rolls, small 1000 pto, hydraulic tilt head • Kuhn 10 bale grapple w/ skid steer hookup • Gehl 970 forage wagon w/ Gehl tandem running gear, hydraulic drive • Linquist Claas chopper adapter to JD corn head • CIH 8340 9' haybine, steel/rubber rolls • New Holland 2 basket tedder • Miller Pro 1100 rotary rake • CIH 8430 round baler, 540 pto, string tie, bale ramps • New Holland 489 haybine • New Holland 65 hay rake • New Idea 9' haybine

SKID STEERS - MANLIFT - FORKLIFT

• 2014 New Holland L216 skid steer, hand/foot controls, cab w/ heat & radio, hydraulic quick tach, 2240 hrs • Bobcat 753 skid steer • 2007 JLG 450AJ Series II manlift, 4x4 • Steel tracks for JD 320 skid steer • 2018 Toyota 8FGU15 forklift, LP

FARM MISC

• Jaylor 3425 vertical TMR mixer w/ scales, excellent condition • Edge 60" side discharge skid loader bucket • (20) 14hp Briggs Vanguard motors, unused • (4) Mitas 800/65R32 tires mounted on 10 bolt rims • (4) Goodyear LSW 1250/35R46 tires on 12 bolt rims • (24) Sunco row cleaners • New Idea 12A ground drive manure spreader • Farm Star 3pt bale

• WE WILL BE CALLING BIDS ON EACH ITEM FROM A REMOTE LOCATION •

- 1) Bid online at SchraderAuction.com
- 2) Bid by phone during the auction. Call no later than **WED., AUG. 6th, 12pm** to schedule your call.
- 3) Bid by submitting an absentee bid on the item that you are interested in. Absentee bids need to be turned in no later than **WED., AUG. 6th, 12pm.**

spear, nice • cattle oiler • (2) hydraulic cylinders • Cast iron closers & firmers for JD 750 drill • 14.5' log chain, 3/8", hooks on both ends • crow bar • Farmex hay moisture tester • Dickey John GAX mini plus grain moisture tester • 18.4-38 clamp on duals • 18.4-38 duals on 9 bolt rims • Vermeer Crust Buster rock picker • Farm Hand 817 grinder mixer hydra drive • fuel truck bed • Vermeer #12 pto trencher • MF suitcase weights • IH wheel weights • manure bucket for skid steer • 30"x18" T tile fitting • 30" 22 degree bend tile fitting • (2) 28" rims for MF 3000 series tractor, fits 14.9-28 tires • Haybuster rock picker, hydraulic drive • Gravity box on IH 30 running gear • (2) spare wagon tires on 8 bolt rims • Smidley 2 ton steer stuffer self feeder • (2) Tarter round bale feeders, good condition • JD 1065 running gear, extendable tongue • (6) 205kg JD wheel weights • (4) 72kg JD wheel weights • high lift hog trailer • 2 post vehicle lift, 1 cylinder needs repacked • transmission jack • (2) electric pickup cranes • (2) pneumatic bumper/frame jacks • AGT adjustable pallet forks • (3) AGT post hole augers, 9", 12" & 18" augers w/ hex drive • 12"x20' livestock or storage building • skid steer buckets • AGT trencher • AGT articulated loader • soil screen • New canopies, various sizes • Cab Cam camera system, 2 cameras & 1 7" color digital monitor

GUIDANCE/TECHNOLOGY

• JD Starfire 3000 receiver w/ RTK 450 radio

LIVESTOCK TRAILERS - SHOW CATTLE EQUIPMENT

• 2017 Eby 8'x24' aluminum livestock trailer, electric brakes, roof vents, floating swinging gate, fixed rear cut gate that swings w/ a slider in it, outside lower tie rails, driver side escape door, passenger side fold down ramp, aluminum rims, electric jack, plexiglass w/ storage tray, spare tire, 1 owner, very nice trailer • 2006 8'x28' C&C aluminum livestock trailer, electric over hydraulic brakes, roof vents, front wall vents, floating front cut gate swings & has a slider in it, fixed rear cut gate swings & has a slider in it, outside lower tie rails, driver side escape door w/ ramp, floating bull cut gate, wheel simulators, 17.5 14 ply tires w/ new spare tire, rear hay rack that mounts on the roof, rubber floor mats, plexiglass, 8k axles, 1 owner, very low use the last several years, very well maintained • (2) Sullivan's Air Express double blowers on carts • 7' Sullivan's aluminum chute • (2) half chutes • Double fan stand • (2) single fan stands • (2) Sullivan stall fan brackets • (2) Sullivan stay straight bars • aluminum fan cage • aluminum calf divider gate • steel calf divider gate • cooler mister pump • farm sign holder for cage • (4) 5' stall mats • set of Sullivan fitting mats • cattle pump • (5) 24" Schafer fans • (14) 24" Sullivan Turbo fans • large assortment of combs & plastic scrubbers • (3) black Phantom halters • 12'x24' pop up tent w/ sides • (9) show halters • Weaver mister • Sullivan & Weaver soaper • water softener only used in show barn • (3) show harness • (4) Porter Cable lights • (12) Sullivan Smart feed pans • Digital scales w/ full cage w/ swing gates on both ends • Tru Test digital scales & platform • (3) sets of 2 speed clippers • lots of clipper blades & guards • (6) large hanging feeders • (6) small hanging feeders • (22) rope halters • (5) neck ties • (2) window air conditioners • Makita hoof grinder • (2) Eskimo cooling collars • black neck sweat collar • Sullivan water filter • 12000 watt generator • (2) Sullivan's Y-hoses for double blowers • fan stand • (6) neck ties • rabbit cage • (4) aluminum trash cans

For updates &

800-451-2709

Bidding Instructions

visit our website: www.SchraderAuction.com

SELLERS: VARIOUS | AUCTION MANAGERS: Eric Ott, 260-413-0787 • Robert Mishler, 260-336-9750 • Mark Schroeder, 260-564-0570

