

SCHRADER
Real Estate and Auction Company, Inc.

CORPORATE HEADQUARTERS:
950 N. Liberty Dr.,
Columbia City, IN 46725

AUCTION MANAGERS:
ARDEN SCHRADER
260-229-2442
JIM HAYWORTH
765-427-1913

AC63001504, AU01050022, AU08700434

TERMS: Cash or Check w/proper ID. 3% surcharge fee for credit cards. Announcements made the day of the auction take precedence over any printed material. Not responsible for accidents.

*2.5% Buyer's Premium capped at \$750.00 added to all winning bids.

All items are sold "AS IS", without any warranty of any kind. Payment is due by the end of the 2nd business day after the auction.

Get our iOS App Follow us on: YouTube

800-451-2709
SchraderAuction.com
Schrader.Nextlot.com

FARM EQUIPMENT AUCTION

PULASKI COUNTY, IN

LIVE INTERNET BIDDING
Visit SchraderAuction.com for Details or call 800-451-2709.



AUGUST 2025						
SUN	MON	TUE	WED	THU	FRI	SAT
					1	2
3	4	5	6	7	8	9
10	11	12	13	14	15	16
17	18	19	20	21	22	23
24	25	26	27	28	29	30
31						

PULASKI COUNTY, IN

6481 S 1600 W, Francesville, IN 47946



FARM EQUIPMENT AUCTION

Tuesday, August 26th • 10:30am EST

Tractors • Combine
Heads • Semi-Tractors
Trailers • Trucks
Planting & Tillage
Augers • Wagons
Motorcycle • Go-Kart
Farm Related Items



FARM EQUIPMENT AUCTION

PULASKI COUNTY, IN

Tractors • Combine
Heads • Semi-Tractors
Trailers • Trucks
Planting & Tillage
Augers • Wagons
Motorcycle • Go-Kart
Farm Related Items



6481 S 1600 W,
Francesville, IN 47946

LIVE INTERNET BIDDING
Visit SchraderAuction.com for Details or call 800-451-2709.

800-451-2709 • SchraderAuction.com • Schrader.Nextlot.com

Tuesday, August 26th • 10:30am EST



LIVE INTERNET BIDDING
Visit SchraderAuction.com for Details or call 800-451-2709.

800-451-2709 • SchraderAuction.com • Schrader.Nextlot.com

PULASKI COUNTY, IN

FARM EQUIPMENT AUCTION

Tuesday, August 26th • 10:30am EST

LOCATED: 6481 S 1600 W, Francesville, IN 47946

From the intersection of US 421 and CR 500 S in Francesville: Take CR 500 S West 1 mile to CR 1600 W then South 1 1/2 miles to the auction.



- CAT CHALLENGER MT 765 TRACTOR
- JOHN DEERE 4850 MFWD TRACTOR
- JOHN DEERE 3020 TRACTOR • CASE IH AFX 8010 RWD COMBINE • 12X30 GERINGHOFF ROTO-DISC CORN HEAD • 40' CASE IH 2162 DRAPER HEAD • UNVERFERTH HT42 & HT30 HEAD CARTS • (2) KENWORTH T-600 SEMI TRACTORS • 41' WILSON HOPPER BOTTOM TRAILER • 34' EAST ALUM DUMP TRUCK • FORD F-800 GRAIN TRUCK • FORD 4X4 EXCURSION • FORD F-250 4X4 PICKUP
- 2002 CAT Challenger MT 765 tractor, 16sp powershift, auto steer, pto, 5 remotes, LED lights, 10 front weights, (New 18" tracs spring of '23), 5217 hrs
- 1983 John Deere 4850 MFWD tractor, powershift, 18.4R42 hub duals, 16.9-28 fronts, fenders, quick hitch, pto, 3 remotes, 20 front weights, 50 hrs on in-frame overhaul in 2024, 7580 hrs
- 1969 John Deere 3020 tractor, WF, diesel, 16.9-34 tires, side console, quick hitch, pto, dual remotes, 5107 hrs
- 2004 Case IH AFX 8010 RWD combine, 20.8R42 duals, 600/65R28 rears, chopper, chaff spreader, bin ext, rebuilt rotor & cage, transition cone, vertical auger, clean grain tank seal 2 seasons ago, Pro 600 monitor, Yield Tracker, 2340 eng, 1545 sep
- 2011 12x30 Geringhoff Roto-disc RD 1200/B corn head, hyd deck plates, power end cones, corn reel, Head Insight, Head Truesight, 1 owner

- Unverferth HT30 head cart, lights
- 2010 40' Case IH 2162 draper head, flip over reel, fore & aft, 1 owner, ONLY harvested 1200 acres
- Unverferth HT42 head cart, 11L-15 tires, lights
- 1994 Kenworth T-600 semi, CAT 425hp, 9sp, air ride, 285/75R24.5 tires, alum rims, 830,000 miles
- 1987 Kenworth T-600 semi, Cummins 400 hp, big cam, 9sp, air ride, 285/75R24.5 tires, wet kit, 972,530 miles
- 2006 41' Wilson DWH-550 alum hopper bottom trailer, air ride, good 24.5 tires, roll tarp
- 1990 34' East alum dump trailer, tri-axle, 72" sides, 11R22.5 tires, roll tarp, litter tarp, liner
- 1979 Ford F-800 straight truck, 370-HV gas, 5sp 2sp, 16' Knapheide steel bed, cargo doors, rear hitch, 1 owner, 56,111 miles
- 2000 Ford Excursion, 4x4, 7.3 diesel, LT265/75R16 tires, rear tires like new, dual batteries, leather, 3 row bench, 175,160 miles
- 1988 Ford F-250 pickup, 4x4, 460, 5sp, extra low 1st gear, Ziebarted, side tool box w/hand tools, 1 owner, 71,092 miles



AUCTIONEER'S NOTE: This is a line of well maintained, clean equipment with several 1 owner pieces. Don't Miss This Auction!

LOAD OUT: Loader available sale day. After sale day by appointment. Items to be removed from auction site by Friday, September 5th, 2025.

- Not Responsible For Accidents
- Lunch Available

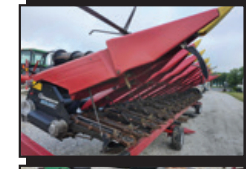


INSPECTION DATE: Monday, August 25th • 9am - 4pm EST

- 7 SHANK KRAUSE 4855 DOMINATOR • 27' LANDOLL 7431 VT DISC • 27' KRAUSE TL 6020 SOIL FINISHER • UNVERFERTH 8250 GRAIN CART • 20,000 GAL & 11,500 GAL LIQUID STORAGE TANKS • 3000 GAL & 2200 GAL CONE BOTTOM LIQUID TANKS • 95'X13" FARM KING/BUHLER AUGER • AUGERS & BIN FAN • 1000 GAL SS NURSE TRAILER • 7' JD 709 ROTARY MOWER • 8' JD GRADER BLADE • (2) PARKER GRAVITY WAGONS
- 2015 Krause 4855 Dominator disc ripper, 7 shanks, hyd front gang & leveling
- 2012 27' Landoll 7431 VT Plus disc, 1200 acres on New blades & bearings in '24
- 27' Krause TL 6200 soil finisher, 3 bar tine harrow & reel, New 20" blades & bearings in '24
- Unverferth 8250 grain cart, 30.5-32 Firestone tires, corner auger, hyd spout, roll tarp, 1 owner
- 20,000 gal glass lined horizontal tank, 12' diameter, 2 Stir-Ators, 4" load
- 11,500 gal fiberglass cone bottom tank, insulated, Stir-Ator
- **Tanks must be removed in 90 days at buyer's expense, can assist in loading arrangements
- 3000 gal & 2200 gal cone bottom poly tanks, SS valves
- 2007 95'x13' Farm King Buhler transport swing away auger, hyd raise, power swing away w/2 remotes, 1000 pto
- 70' x 10" Farm King transport swing away auger, hyd raise
- 55' x 10" transport auger
- Patriot flipper for 13" auger, hyd drive motor
- GSI 24" DF-10-1 aeration fan, 1ph w/ starter
- 1000 gal SS nurse tank on Clark tandem trailer, sparge tube
- 7' John Deere 709 rotary mower, 3pt
- 8' John Deere HD grader blade, hyd angle & tilt, 3pt
- (2) Parker 300 bu gravity wagons, NI gears, ext tongues, 10.00-20 tires



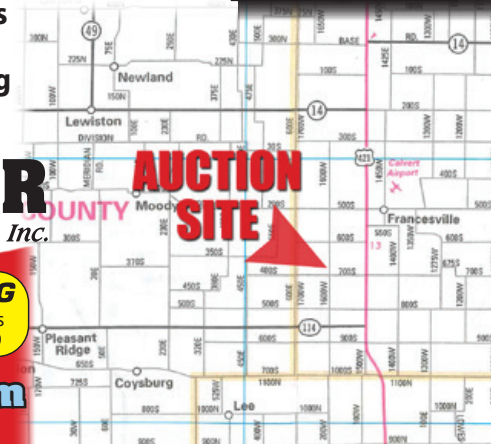
- KAWASAKI LTD 550 MOTORCYCLE • GO KART
- NEW STEEL SIDING • TRACTOR WEIGHTS
- FARM RELATED ITEMS
- Kawasaki LTD 550 motorcycle (non-running)
- Manco Deuce Go Kart, 2 passenger, roll cage, 12hp Tecumseh (non-running)
- Go Kart chassis
- Bachtold weed mower, Wisconsin motor
- Yard Machines lawn tractor, mower deck, needs battery
- 10 1/2' x 6' flat rack steel bed wagon, hyd dump
- 4'x8' single axle trailer, expanded metal floor
- (17) New 34'9" white metal siding/roofing
- (13) New assorted lengths metal siding & roofing
- 2" oak & pine, 2" assorted lumber
- 9 bolt dual hubs
- (2) heavy thick JD rear wheel weights
- (3) JD wheel weights
- JD 20 series starter weights
- IH circle & split weights
- Hyd cylinders
- Motorola FM radios
- (2) New 11R22.5 tires, (1) New 11R24.5 tire
- Assorted used tires
- Tire dolly
- Single used trac for CAT Challenger
- 200 gal poly shuttle tanks
- Banjo fittings, screens & plumbing
- Fertilizer hoses
- Stihl 075 chain saw, 34" bar, needs starter rope
- 100 gal fuel tank
- (2) oil reservoirs • Torch cart
- Twisted shovel points • Assorted roller chain
- 3pt rock box • Used bin ladders
- Nylon tow straps
- (2) 3 door lockers • Alum wiring
- Farm related misc items



SCHRADER COUNTY AUCTION SITE
Real Estate and Auction Company, Inc.



LIVE INTERNET BIDDING
Visit SchraderAuction.com for Details
or call Arden Schrader 800-451-2709



OWNERS: Jan Gutwein & Val Gutwein • Jan Gutwein 219-204-3349 (leave msg)
AUCTION MANAGERS: Arden Schrader 260-229-2442 | Jim Hayworth 765-427-1913

800-451-2709 • SchraderAuction.com • Schrader.Nextlot.com