

LENAWEE COUNTY, MICHIGAN

Land Auction



147+ Acres

Offered in 5 Tracts

TRACTS 3-5

- Productive Tillable Farmland
- Pattern Tiled
- Great Hunting
- Potential Timber Value
- Large Storage Shed



TRACT 3

Monday, September 29th • 6pm
at The Centre - Adrian

SOIL TEST INFORMATION BOOKLET



3% Buyer's Premium



800-451-2709 • SchraderAuction.com

DISCLAIMER:

This information booklet includes information obtained or derived from third-party sources. Although believed to be accurate and from reliable sources, such information is subject to verification and is not intended as a substitute for a prospective buyer's independent review and investigation of the property. Prospective buyers are responsible for completing their own due diligence.

THIS PROPERTY IS OFFERED "AS IS, WHERE IS". NO WARRANTY OR REPRESENTATION, STATED OR IMPLIED, IS MADE CONCERNING THE PROPERTY. Without limiting the foregoing, Owner and Auction Company and their respective agents and representatives, assume no liability for (and disclaim any and all promises, representations and warranties with respect to) the information and reports contained herein.

OWNER: Welden Family

AUCTION COMPANY: Schrader Real Estate and Auction Company, Inc.

Kevin Ray Jordan, 6502397357

Jonathan Aiden Shaw, 6501458992

Schrader Real Estate and Auction Company Inc., 6505397356



SCHRADER REAL ESTATE & AUCTION CO., INC.

950 N. Liberty Dr., Columbia City, IN 46725

260-244-7606 or 800-451-2709

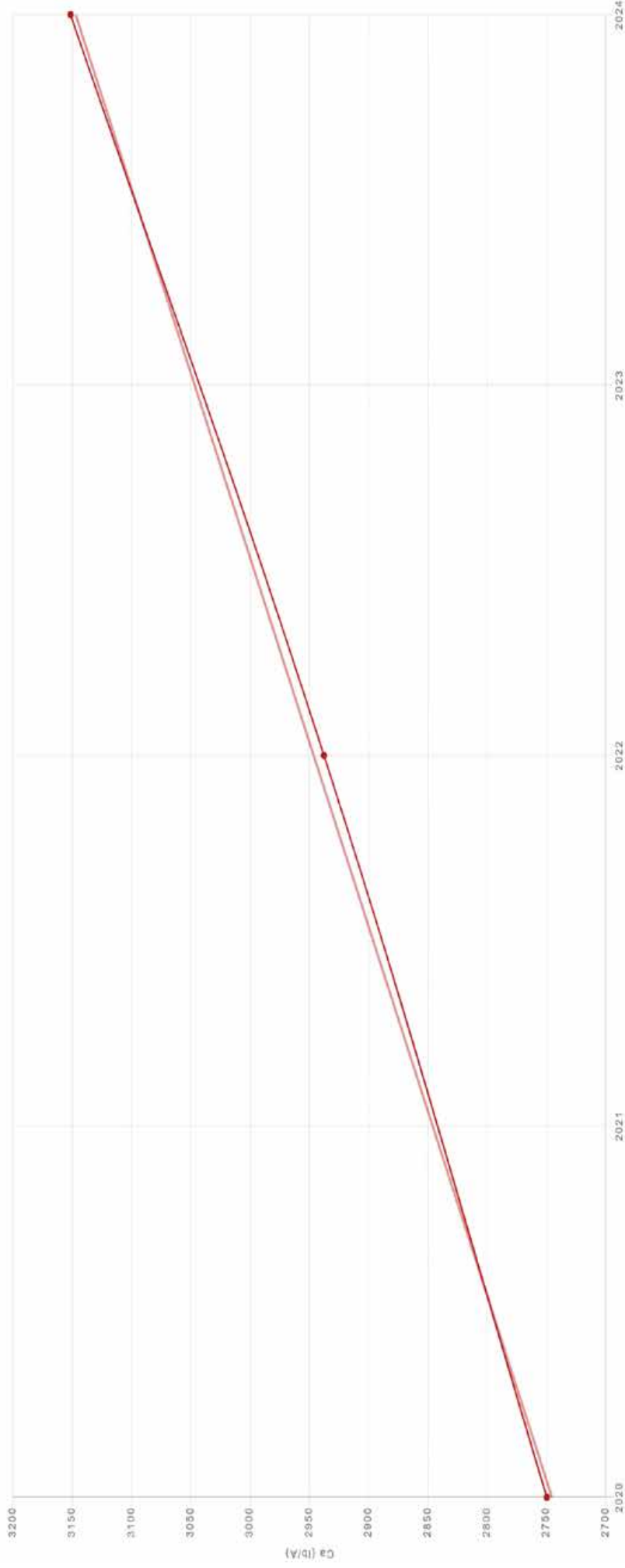
SchraderAuction.com

Adrian 31
53 Schneider
Soil Test 2020-2025

Farm	Field	Sample	Year	TEC	pH	OM	Sulfur	P2O5	Ca_lb/a	Mg_lb/a	K_lb/a	Na_lb/a	Ca_%	Mg_%	K_%	H_%	B_ppm	Mnppm	Cuppm	Znppm
Adrian 31	53 Schne	1	2025	11.04	6.5	2.12	10	128	2954	462	222	34	66.89	17.44	2.58	7.5	0.36	58	2.26	1.46
Adrian 31	53 Schne	1	2024	11.04	6.5	2.12	10	128	2954	462	222	34	66.89	17.44	2.58	7.5	0.36	58	2.26	1.46
Adrian 31	53 Schne	1	2023	11.47	6.4	2.74	9	115	3064	452	182	40	66.78	16.42	2.03	9	0.37	63	1.87	2.49
Adrian 31	53 Schne	1	2022	11.47	6.4	2.74	9	115	3064	452	182	40	66.78	16.42	2.03	9	0.37	63	1.87	2.49
Adrian 31	53 Schne	1	2021	12.37	5.8	2.59	8	87	2792	436	152	28	56.43	14.69	1.58	21	0.4	66	1.9	1.99
Adrian 31	53 Schne	1	2020	12.37	5.8	2.59	8	87	2792	436	152	28	56.43	14.69	1.58	21	0.4	66	1.9	1.99
Adrian 31	53 Schne	2	2025	10.63	6.4	2.08	11	142	2750	420	358	28	64.68	16.46	4.32	9	0.49	68	2.23	1.78
Adrian 31	53 Schne	2	2024	10.63	6.4	2.08	11	142	2750	420	358	28	64.68	16.46	4.32	9	0.49	68	2.23	1.78
Adrian 31	53 Schne	2	2023	9.53	6.5	2.48	9	151	2538	376	296	28	66.58	16.44	3.98	7.5	0.25	61	1.8	2.33
Adrian 31	53 Schne	2	2022	9.53	6.5	2.48	9	151	2538	376	296	28	66.58	16.44	3.98	7.5	0.25	61	1.8	2.33
Adrian 31	53 Schne	2	2021	8.7	5.7	2.17	10	115	1838	260	286	22	52.82	12.45	4.21	24	0.33	66	1.62	2.3
Adrian 31	53 Schne	2	2020	8.7	5.7	2.17	10	115	1838	260	286	22	52.82	12.45	4.21	24	0.33	66	1.62	2.3
Adrian 31	53 Schne	3	2025	11.52	6.7	2.42	11	101	3260	430	350	32	70.75	15.55	3.9	4.5	0.63	72	2.26	1.97
Adrian 31	53 Schne	3	2024	11.52	6.7	2.42	11	101	3260	430	350	32	70.75	15.55	3.9	4.5	0.63	72	2.26	1.97
Adrian 31	53 Schne	3	2023	10.61	6.4	2.73	8	87	2816	394	300	28	66.35	15.47	3.63	9	0.45	74	1.69	2.23
Adrian 31	53 Schne	3	2022	10.61	6.4	2.73	8	87	2816	394	300	28	66.35	15.47	3.63	9	0.45	74	1.69	2.23
Adrian 31	53 Schne	3	2021	10.19	7.2	2.63	6	73	2878	516	270	32	70.61	21.1	3.4	0	0.82	119	2.27	2.32
Adrian 31	53 Schne	3	2020	10.19	7.2	2.63	6	73	2878	516	270	32	70.61	21.1	3.4	0	0.82	119	2.27	2.32
Adrian 31	53 Schne	4	2025	13.27	7.1	2.77	11	78	3828	644	286	36	72.12	20.22	2.76	0	0.83	106	2.5	1.7
Adrian 31	53 Schne	4	2024	13.27	7.1	2.77	11	78	3828	644	286	36	72.12	20.22	2.76	0	0.83	106	2.5	1.7
Adrian 31	53 Schne	4	2023	10.54	5.8	2.39	10	60	2388	344	194	28	56.64	13.6	2.36	21	0.36	80	1.93	1.55
Adrian 31	53 Schne	4	2022	10.54	5.8	2.39	10	60	2388	344	194	28	56.64	13.6	2.36	21	0.36	80	1.93	1.55
Adrian 31	53 Schne	4	2021	11.09	6.3	2.69	7	55	2872	450	180	34	64.74	16.91	2.08	10.5	0.53	103	1.54	1.51
Adrian 31	53 Schne	4	2020	11.09	6.3	2.69	7	55	2872	450	180	34	64.74	16.91	2.08	10.5	0.53	103	1.54	1.51
Adrian 31	53 Schne	5H	2025	11.72	6.6	2.65	12	82	3306	422	286	30	70.52	15	3.13	6	0.54	86	1.72	1.57
Adrian 31	53 Schne	5H	2024	11.72	6.6	2.65	12	82	3306	422	286	30	70.52	15	3.13	6	0.54	86	1.72	1.57
Adrian 31	53 Schne	5H	2023	12.43	5.7	3.32	10	87	2830	310	216	26	56.92	10.39	2.23	24	0.37	75	1.45	1.82
Adrian 31	53 Schne	5H	2022	12.43	5.7	3.32	10	87	2830	310	216	26	56.92	10.39	2.23	24	0.37	75	1.45	1.82
Adrian 31	53 Schne	5H	2021	12.51	6.5	2.84	8	64	3420	496	214	32	68.35	16.52	2.19	7.5	0.54	82	1.53	1.66
Adrian 31	53 Schne	5H	2020	12.51	6.5	2.84	8	64	3420	496	214	32	68.35	16.52	2.19	7.5	0.54	82	1.53	1.66
Adrian 31	53 Schne	6L	2025	13	7.1	2.98	9	137	3718	644	308	32	71.5	20.64	3.04	0	0.79	77	2.92	2.1
Adrian 31	53 Schne	6L	2024	13	7.1	2.98	9	137	3718	644	308	32	71.5	20.64	3.04	0	0.79	77	2.92	2.1
Adrian 31	53 Schne	6L	2023	12.31	6.7	3.34	8	92	3348	592	216	28	67.99	20.04	2.25	4.5	0.39	103	1.75	2.48
Adrian 31	53 Schne	6L	2022	12.31	6.7	3.34	8	92	3348	592	216	28	67.99	20.04	2.25	4.5	0.39	103	1.75	2.48
Adrian 31	53 Schne	6L	2021	13.1	6.6	3.39	8	119	3414	652	270	40	65.15	20.74	2.64	6	0.73	69	2.07	2.17
Adrian 31	53 Schne	6L	2020	13.1	6.6	3.39	8	119	3414	652	270	40	65.15	20.74	2.64	6	0.73	69	2.07	2.17
Adrian 31	53 Schne	7H	2025	9.19	7.0	2.76	8	78	2544	478	284	30	69.21	21.67	3.96	0	0.64	66	1.3	1.76
Adrian 31	53 Schne	7H	2024	9.19	7.0	2.76	8	78	2544	478	284	30	69.21	21.67	3.96	0	0.64	66	1.3	1.76
Adrian 31	53 Schne	7H	2023	11.04	7.3	2.61	7	55	3166	562	218	24	71.69	21.21	2.53	0	0.52	75	1.42	1.52
Adrian 31	53 Schne	7H	2022	11.04	7.3	2.61	7	55	3166	562	218	24	71.69	21.21	2.53	0	0.52	75	1.42	1.52
Adrian 31	53 Schne	7H	2021	10.48	6.3	2.81	9	82	2656	444	214	38	63.36	17.65	2.62	10.5	0.53	71	1.19	1.9
Adrian 31	53 Schne	7H	2020	10.48	6.3	2.81	9	82	2656	444	214	38	63.36	17.65	2.62	10.5	0.53	71	1.19	1.9
Adrian 31	53 Schne	8L	2025	12.35	6.8	3.03	14	115	3534	522	254	34	71.54	17.61	2.64	3	0.74	48	2.03	1.89
Adrian 31	53 Schne	8L	2024	12.35	6.8	3.03	14	115	3534	522	254	34	71.54	17.61	2.64	3	0.74	48	2.03	1.89
Adrian 31	53 Schne	8L	2023	13.65	6.9	3.35	10	115	3808	686	280	42	69.74	20.94	2.63	1.5	0.72	46	2.01	1.76
Adrian 31	53 Schne	8L	2022	13.65	6.9	3.35	10	115	3808	686	280	42	69.74	20.94	2.63	1.5	0.72	46	2.01	1.76
Adrian 31	53 Schne	8L	2021	10.82	6.4	2.69	8	78	2738	506	224	28	63.26	19.49	2.65	9	0.53	64	1.69	1.69
Adrian 31	53 Schne	8L	2020	10.82	6.4	2.69	8	78	2738	506	224	28	63.26	19.49	2.65	9	0.53	64	1.69	1.69
Adrian 31	53 Schne	9H	2025	9.96	6.2	2.12	12	82	2468	394	284	32	61.95	16.48	3.66	12	0.43	76	1.23	1.16
Adrian 31	53 Schne	9H	2024	9.96	6.2	2.12	12	82	2468	394	284	32	61.95	16.48	3.66	12	0.43	76	1.23	1.16
Adrian 31	53 Schne	9H	2023	9.39	6.5	2.24	8	101	2480	388	252	38	66.03	17.22	3.44	7.5	0.54	70	1.04	1.44
Adrian 31	53 Schne	9H	2022	9.39	6.5	2.24	8	101	2480	388	252	38	66.03	17.22	3.44	7.5	0.54	70	1.04	1.44
Adrian 31	53 Schne	9H	2021	9.78	5.9	2.1	7	60	2138	426	232	26	54.65	18.15	3.04	18	0.46	73	1.17	1.56
Adrian 31	53 Schne	9H	2020	9.78	5.9	2.1	7	60	2138	426	232	26	54.65	18.15	3.04	18	0.46	73	1.17	1.56

Soil Trend Graph

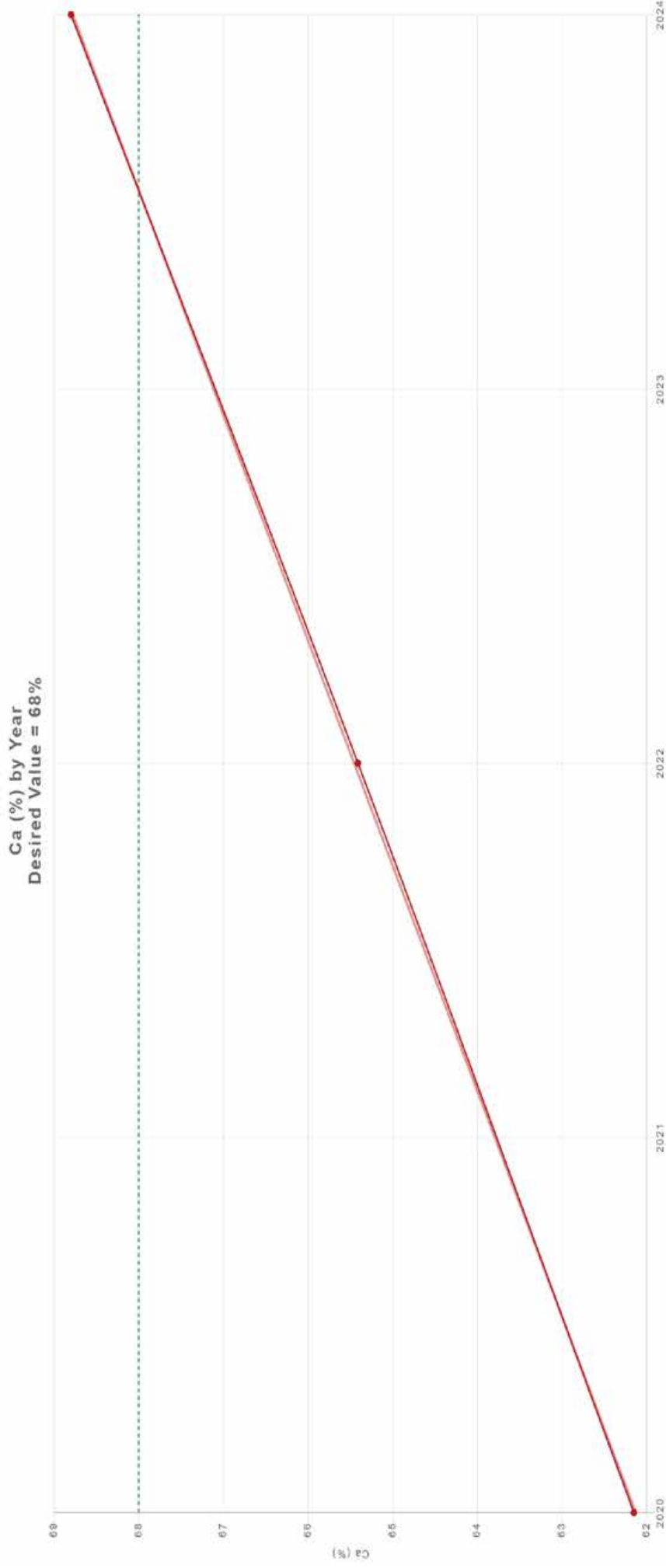
Ca (lb/A) by Year



■ Welden Farms|Adrian 31|53 Schneider (m: 100.44...)

August 19, 2025 10:35 AM

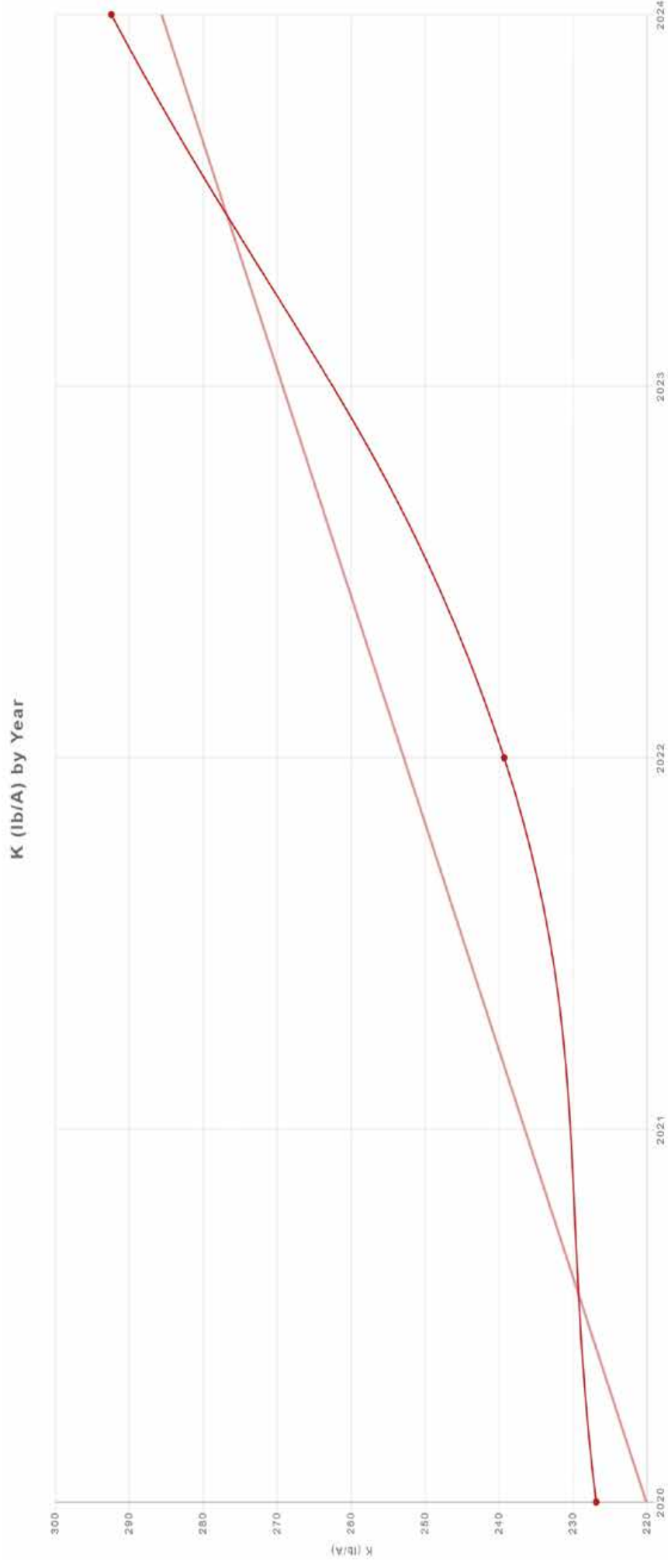
Soil Trend Graph



■ Welden Farms|Adrian 31|53 Schneider (m: 1.66)

August 19, 2025 11:15 AM

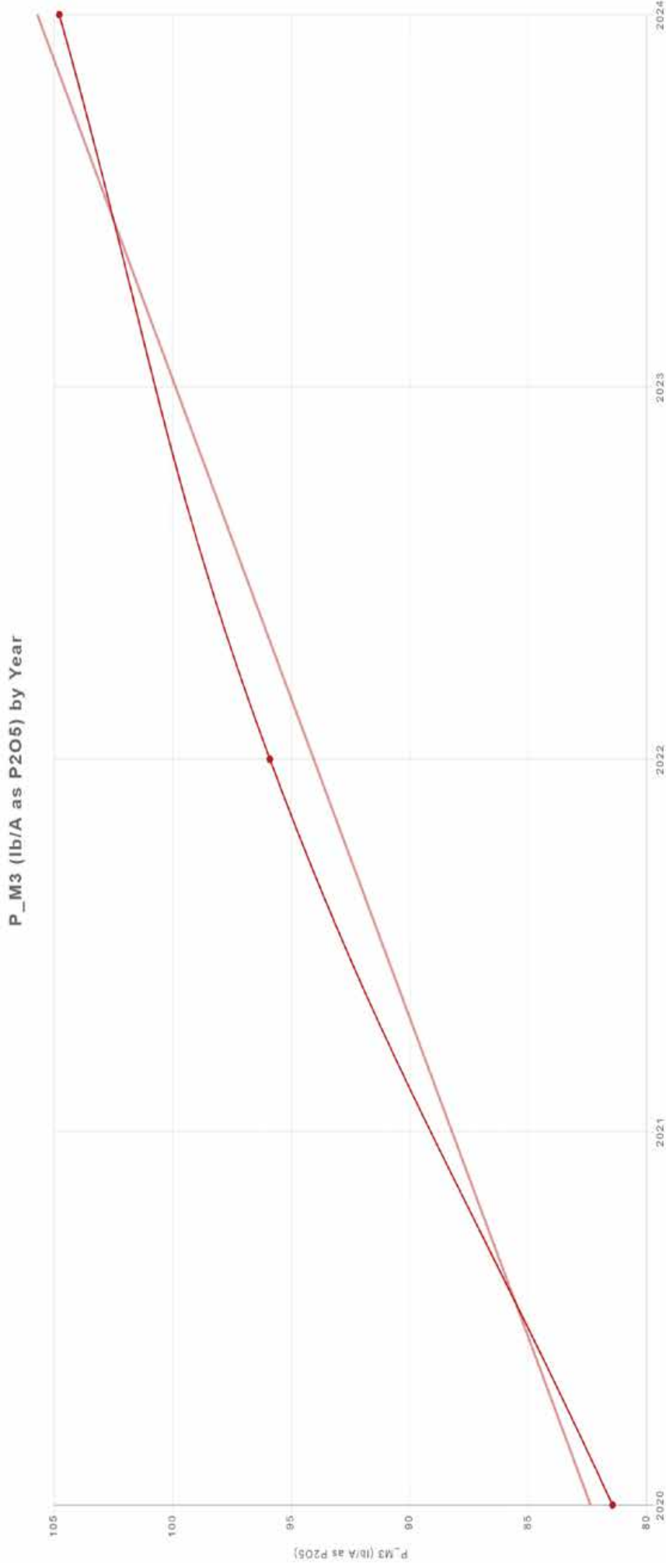
Soil Trend Graph



■ Welden Farms|Adrian 31|53 Schneider (m: 16.39)

August 19, 2025 11:10 AM

Soil Trend Graph

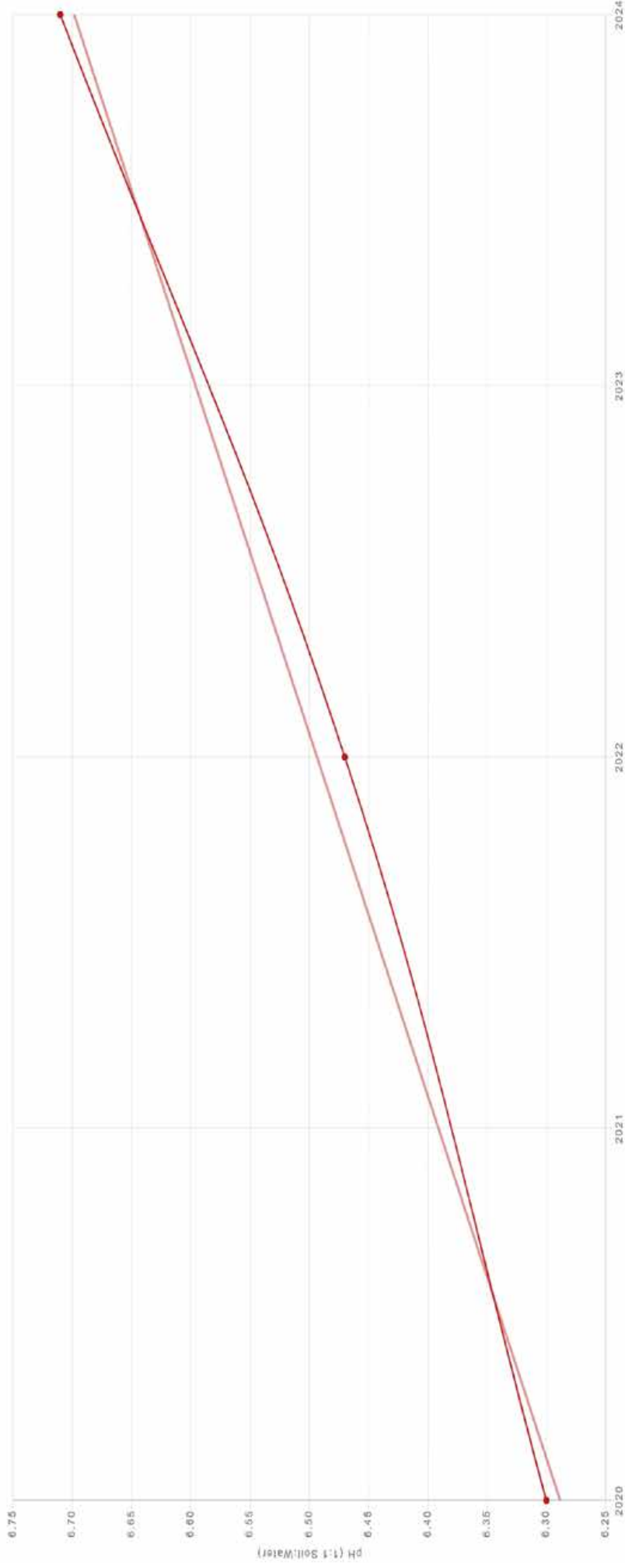


■ Welden Farms|Adrian 31|53 Schneider (m: 5.83)

August 19, 2025 11:12 AM

Soil Trend Graph

pH (1:1 Soil:Water) by Year



Welden Farms|Adrian 31|53 Schneider (m: 0.10)

August 19, 2025 11:07 AM

Rx Lime and Fertilizer Summary

2018 BLEND 2 - 60% Potash, 39% MAP & 1% Borate
2019 BLEND 2 - 60% Potash, 39% MAP & 1% Borate
2020 BLEND 2 - 57% Potash, 42% MAP & 1% Borate
2021 BLEND 2 - 57% Potash, 42% MAP & 1% Borate
2022 BLEND 2 - 57% Potash, 42% MAP & 1% Borate
2023 BLEND 1 - 50% Potash, 48.5% MAP & 1.5% Borate
2024 BLEND 1 - 50% Potash, 48.5% MAP & 1.5% Borate

Crop History

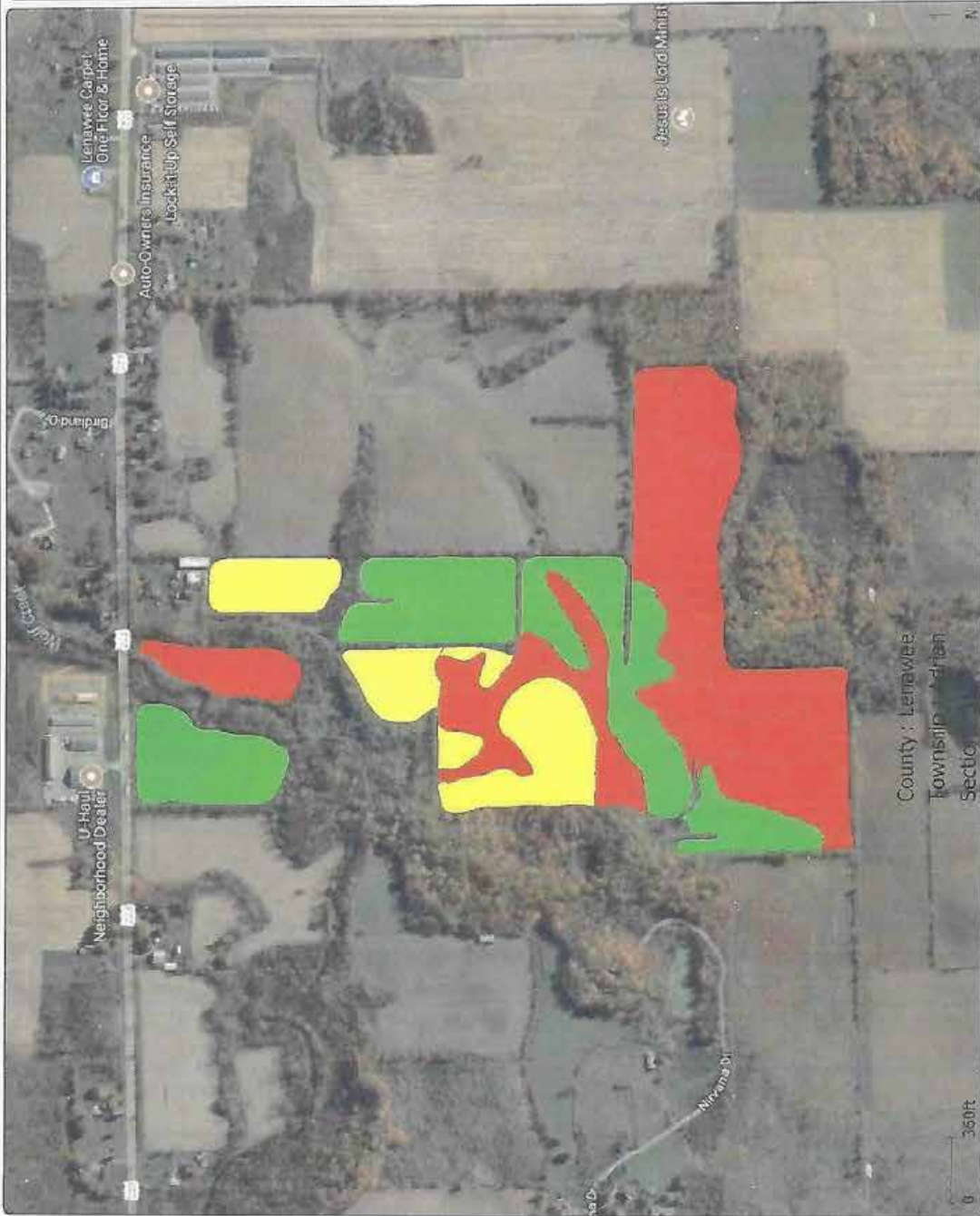
2018 = Soybean
2019 = Corn
2020 = Soybean
2021 = Corn
2022 = Soybean
2023 = Corn
**2024 = Edible Dry
Black Beans**
2025 = Corn

TILE MAP



Rx Lime and Fertilizer Application Maps - 2018

53 Schneider A31 Blend 2 - 2018



Grower : Welden Farms

Farm : 53 Schneider

Field : A31

Year : 2018

Operation : Fertilizing Prescription (Dry)

Crop / Product : Blend 2

Area : 94.8 ac

Total Amount : 22929.5 lb

Average Rate : 241.9 lb/ac

Minimum Rate : 200.0 lb/ac

Maximum Rate : 300.0 lb/ac

Target Rate (Mass)
(lb/ac)

- 300.0 (31.1 ac)
- 250.0 (17.4 ac)
- 200.0 (46.5 ac)

419 553-7970



Rx Lime and Fertilizer Application Maps - 2018

1b/A

BROOKSIDE LABORATORIES, INC. SOIL AUDIT AND INVENTORY REPORT

54849-24

Name Welden Farms City _____ State _____

Independent Consultant B. & M Crop Consulting, Inc. Date 5/8/2018

Sample Location			53 SCHNEIDER	A31	A31	A31	A31	A31
Sample Identification				1	2	3	4	5H
Lab Number				0646-1	0647-1	0648-1	0649-1	0650-1
Total Exchange Capacity (ME/100 g)				9.82	8.42	10.52	11.39	10.13
pH	Buffer (SMP/Sikora)			7.1	7.1	NA	7.3	7.5
	H ₂ O (1:1)			6.4	5.7	7.1	6.5	6.9
Organic Matter (humus) %				2.42	2.22	2.32	2.27	2.58
Estimated Nitrogen Release			lb/A	68	64	66	65	72
ANIONS	SOLUBLE SULFUR*		ppm	7	8	5	5	6
	PHOSPHORUS	MEHLICH III	lb/A P as P ₂ O ₅ ppm of P	82	110	73	37	55
		BRAY II	lb/A P as P ₂ O ₅ ppm of P	18	24	16	8	12
	OLSEN	lb/A P as P ₂ O ₅ ppm of P						
EXCHANGEABLE CATIONS	CALCIUM*		lb/A ppm	2462 1231	1708 854	2952 1476	2994 1497	2854 1427
	MAGNESIUM*		lb/A ppm	464 232	266 133	534 267	510 255	474 237
	POTASSIUM*		lb/A ppm	180 90	302 151	258 129	188 94	216 108
	SODIUM*		lb/A ppm	58 29	58 29	60 30	60 30	62 31
BASE SATURATION PERCENT								
Calcium			%	62.68	50.71	70.15	65.72	70.43
Magnesium			%	19.69	13.16	21.15	18.66	19.50
Potassium			%	2.35	4.60	3.14	2.12	2.73
Sodium			%	1.28	1.50	1.24	1.15	1.33
Other Bases			%	5.00	6.00	4.30	4.90	4.50
Hydrogen			%	9.00	24.00	0.00	7.50	1.50
EXTRACTABLE MINORS								
Boron* (ppm)				0.42	0.28	0.71	0.48	0.52
Iron* (ppm)				148	154	136	109	118
Manganese* (ppm)				64	60	89	67	62
Copper* (ppm)				2.11	1.55	2.04	1.48	1.40
Zinc* (ppm)				1.79	1.76	2.15	1.39	1.60
Aluminum* (ppm)				647	687	544	595	606
OTHER TESTS	Soluble Salts (mmhos/cm)							
	Chlorides (ppm)							

* Mehlich III Extractable

Rx Lime and Fertilizer Application Maps - 2018

1b/A

BROOKSIDE LABORATORIES, INC. SOIL AUDIT AND INVENTORY REPORT

54849-24

Name Weiden Farms City _____ State _____

Independent Consultant B & M Crop Consulting, Inc. Date 5/8/2018

Sample Location	53 SCHNEIDER	A31	A31	A31	A31
Sample Identification		6L	7H	8L	9H
Lab Number		0651-1	0652-1	0653-1	0654-1
Total Exchange Capacity (ME/100 g)		16.07	12.59	12.44	8.84
pH	Buffer (SMP/Stokora)	7.3	NA	7.4	7.4
	H ₂ O (1:1)	6.8	7.2	6.5	6.4
Organic Matter (humus) %		3.53	2.43	2.68	2.11
Estimated Nitrogen Release	lb/A	85	69	74	62

ANIONS	SOLUBLE SULFUR*		ppm	7	6	7	5	
	PHOSPHORUS	MEHLICH III	lb/A P as P ₂ O ₅	ppm of P	119	55	87	87
					26	12	19	19
		BRAY II	lb/A P as P ₂ O ₅	ppm of P				
	OLSEN	lb/A P as P ₂ O ₅	ppm of P					
EXCHANGEABLE CATIONS	CALCIUM*		lb/A	4322	3618	3174	2174	
			ppm	2161	1809	1587	1087	
	MAGNESIUM*		lb/A	830	620	604	416	
			ppm	415	310	302	208	
	POTASSIUM*		lb/A	348	224	240	236	
		ppm	174	112	120	118		
SODIUM*		lb/A	66	68	62	62		
		ppm	33	34	31	31		

BASE SATURATION PERCENT

Calcium	%	67.24	71.84	63.79	61.48
Magnesium	%	21.52	20.52	20.23	19.61
Potassium	%	2.78	2.28	2.47	3.42
Sodium	%	0.89	1.17	1.08	1.52
Other Bases	%	4.60	4.20	4.90	5.00
Hydrogen	%	3.00	0.00	7.50	9.00

EXTRACTABLE MINORS

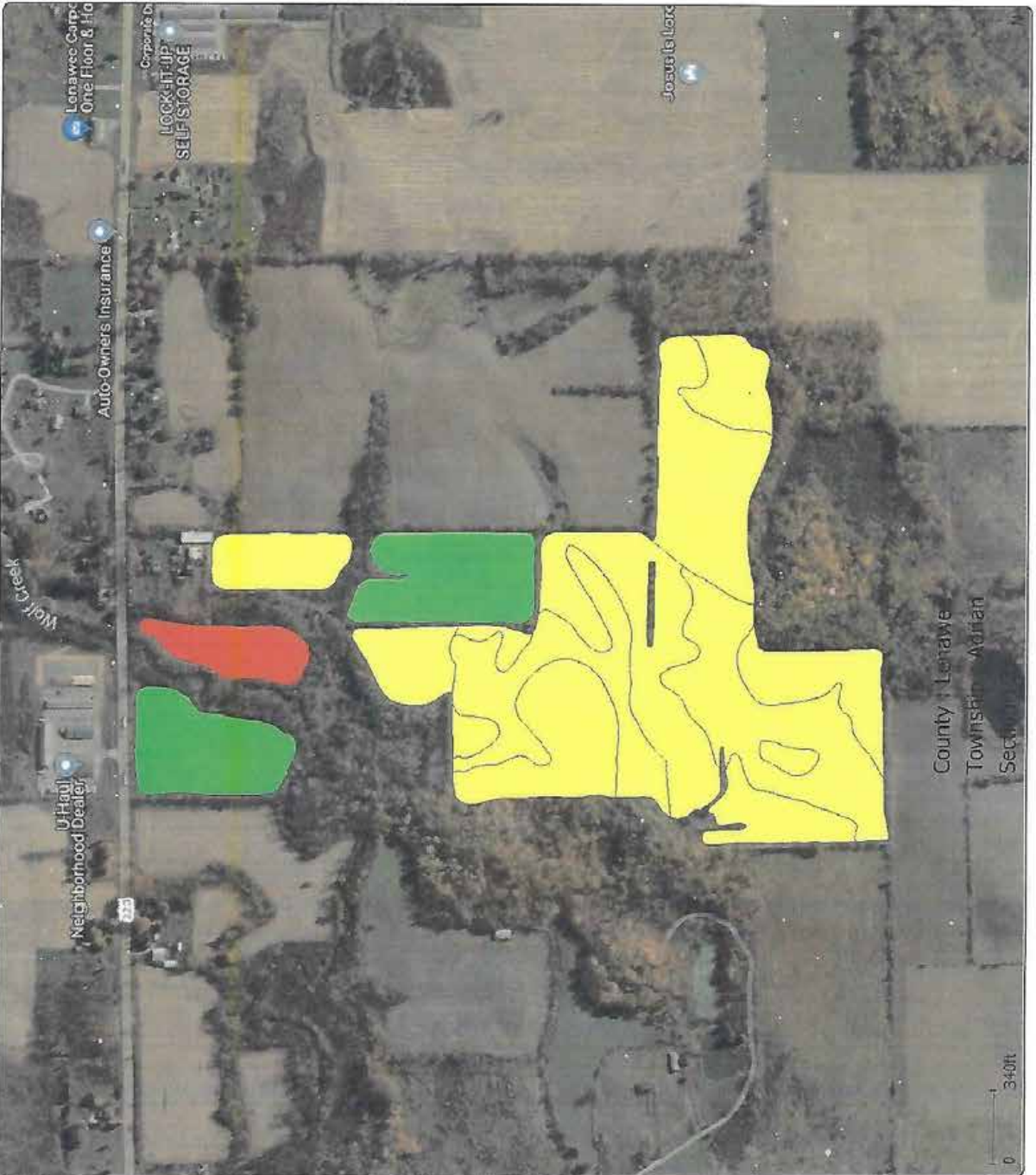
Boron* (ppm)	0.83	0.67	0.55	0.49
Iron* (ppm)	154	108	151	115
Manganese* (ppm)	72	50	74	63
Copper* (ppm)	2.57	1.34	1.89	1.03
Zinc* (ppm)	3.45	1.67	1.75	1.46
Aluminum* (ppm)	687	553	661	575

OTHER TESTS	Soluble Salts (mmhos/cm)				
	Chlorides (ppm)				

* Mehlich III Extractable

Rx Lime and Fertilizer Application Maps - 2019

53 Schneider A31 Blend 2 - 2019



Grower : Welden Farms
 Farm : 53 Schneider
 Field : A31
 Year : 2019
 Operation : Fertilizing Prescription (Dry)
 Crop / Product : Blend 2
 Area : 95.1 ac
 Total Amount : 29137.1 lb
 Average Rate : 306.3 lb/ac
 Minimum Rate : 250.0 lb/ac
 Maximum Rate : 350.0 lb/ac

Target Rate (Mass)
 (lb/ac)

■	350.0 (16.1 ac)
■	300.0 (75.3 ac)
■	250.0 (4.0 ac)

419 553-7970

B&M
C R O P
Consulting

Rx Lime and Fertilizer Application Maps - 2020

53 Schneider A31 Blend 2 - 2020



Grower : Weiden Farms
 Farm : 53 Schneider
 Field : A31
 Year : 2020
 Operation : Fertilizing Prescription (Dry)
 Crop / Product : Blend 2
 Area : 95.1 ac
 Total Amount : 32880.4 lb
 Average Rate : 345.7 lb/ac
 Minimum Rate : 300.0 lb/ac
 Maximum Rate : 350.0 lb/ac

Target Rate (Mass)
 (lb/ac)
■ 350.0 (87.1 ac)
■ 300.0 (8.3 ac)

419 553-7970

B&M
C R O P
Consulting

Rx Lime and Fertilizer Application Maps - 2020

lb/A

BROOKSIDE LABORATORIES, INC. SOIL AUDIT AND INVENTORY REPORT

54849-34

Name Welden Farms City _____ State _____

Independent Consultant B & M Crop Consulting, Inc. Date 5/29/2020

Sample Location	53 SCHNEIDER	A31	A31	A31	A31	A31	
Sample Identification		1	2	3	4	5H	
Lab Number		0281-1	0282-1	0283-1	0284-1	0285-1	
Total Exchange Capacity (ME/100 g)		12.37	8.70	10.19	11.09	12.51	
pH(H ₂ O 1:1)		5.8	5.7	7.2	6.3	6.5	
Organic Matter (360°C LOI) %		2.59	2.17	2.63	2.69	2.84	
Estimated Nitrogen Release lb/A		72	63	73	74	77	
ANIONS	SOLUBLE SULFUR* ppm	8	10	6	7	8	
	PHOSPHORUS	MEHLICH III lb/A P as P ₂ O ₅ ppm of P	87	115	73	55	64
		BRAY II lb/A P as P ₂ O ₅ ppm of P	73	82	119	60	60
	OLEFIN	lb/A P as P ₂ O ₅ ppm of P	16	18	26	13	13
EXCHANGEABLE CATIONS	CALCIUM* lb/A ppm	2792	1838	2878	2872	3420	
	MAGNESIUM* lb/A ppm	436	260	516	450	496	
	POTASSIUM lb/A ppm	218	130	258	225	248	
	SODIUM* lb/A ppm	76	143	135	90	107	
		14	11	16	17	16	
BASE SATURATION PERCENT							
Calcium %		56.43	52.82	70.61	64.74	68.35	
Magnesium %		14.69	12.45	21.10	16.91	16.52	
Potassium %		1.58	4.21	3.40	2.08	2.19	
Sodium %		0.49	0.55	0.68	0.67	0.56	
Other Bases %		5.80	6.00	4.20	5.10	4.90	
Hydrogen %		21.00	24.00	0.00	10.50	7.50	
EXTRACTABLE MINORS							
Boron* (ppm)		0.40	0.33	0.82	0.53	0.54	
Iron* (ppm)		147	159	160	119	128	
Manganese* (ppm)		66	66	119	103	82	
Copper (ppm)		1.90	1.62	2.27	1.54	1.53	
Zinc* (ppm)		1.99	2.30	2.32	1.51	1.66	
Aluminum* (ppm)		663	680	549	618	654	
OTHER TESTS	Soluble Salts (mmhos/cm)						
	Chlorides (ppm)						

* Mehlich III Extractable

Rx Lime and Fertilizer Application Maps - 2020

lb/A

BROOKSIDE LABORATORIES, INC. SOIL AUDIT AND INVENTORY REPORT

54849-34

Name Welden Farms City _____ State _____

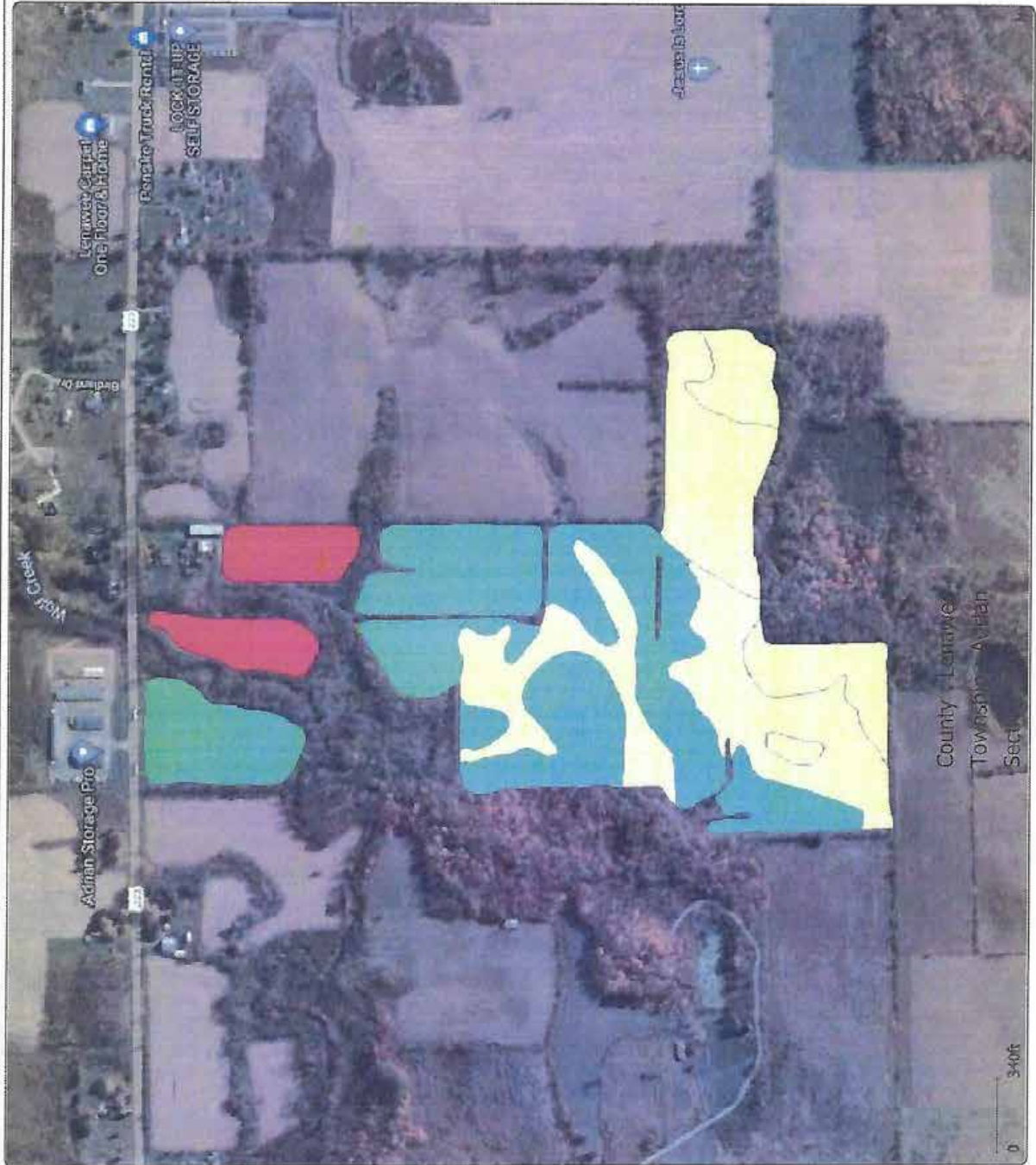
Independent Consultant B & M Crop Consulting, Inc. Date 5/29/2020

Sample Location		53 SCHNEIDER	A31	A31	A31	A31	
Sample Identification			6L	7H	8L	9H	
Lab Number			0286-1	0287-1	0288-1	0289-1	
Total Exchange Capacity (ME/100 g)			13.10	10.48	10.82	9.78	
pH (H ₂ O 1:1)			6.6	6.3	6.4	5.9	
Organic Matter (360°C LOI) %			3.39	2.81	2.69	2.10	
Estimated Nitrogen Release lb/A			84	76	74	62	
ANIONS	SOLUBLE SULFUR*	ppm	8	9	8	7	
	MEHLICH III	lb/A P as P ₂ O ₅	119	82	78	60	
		ppm of P	26	18	17	13	
	BRAY II	lb/A P as P ₂ O ₅	206	82	87	60	
ppm of P		45	18	19	13		
	OLSEN	lb/A P as P ₂ O ₅					
		ppm of P					
EXCHANGEABLE CATIONS	CALCIUM*	lb/A	3414	2656	2738	2138	
		ppm	1707	1328	1369	1069	
	MAGNESIUM*	lb/A	652	444	506	426	
		ppm	326	222	253	213	
POTASSIUM*	lb/A	270	214	224	232		
	ppm	135	107	112	116		
	SODIUM*	lb/A	40	38	28	26	
		ppm	20	19	14	13	
BASE SATURATION PERCENT							
	Calcium	%	65.15	63.36	63.26	54.65	
	Magnesium	%	20.74	17.65	19.49	18.15	
	Potassium	%	2.64	2.62	2.65	3.04	
	Sodium	%	0.66	0.79	0.56	0.58	
	Other Bases	%	4.80	5.10	5.00	5.60	
	Hydrogen	%	6.00	10.50	9.00	18.00	
EXTRACTABLE MINORS							
	Boron* (ppm)		0.73	0.53	0.53	0.46	
	Iron* (ppm)		152	131	162	114	
	Manganese* (ppm)		69	71	64	73	
	Copper* (ppm)		2.07	1.19	1.69	1.17	
	Zinc* (ppm)		2.17	1.90	1.69	1.56	
	Aluminum* (ppm)		608	567	617	588	
OTHER TESTS	Soluble Salts (mmhos/cm)						
	Chlorides (ppm)						

* Mehlich III Extractable

Rx Lime and Fertilizer Application Maps - 2021

53 Schneider A31 Blend 2 - 2021



Grower : Weiden Farms
 Farm : 53 Schneider
 Field : A31
 Year : 2021
 Operation : Fertilizing Prescription (Dry)
 Crop / Product : Blend 2
 Area : 95.1 ac
 Total Amount : 30350.2 lb
 Average Rate : 319.1 lb/ac
 Minimum Rate : 250.0 lb/ac
 Maximum Rate : 350.0 lb/ac

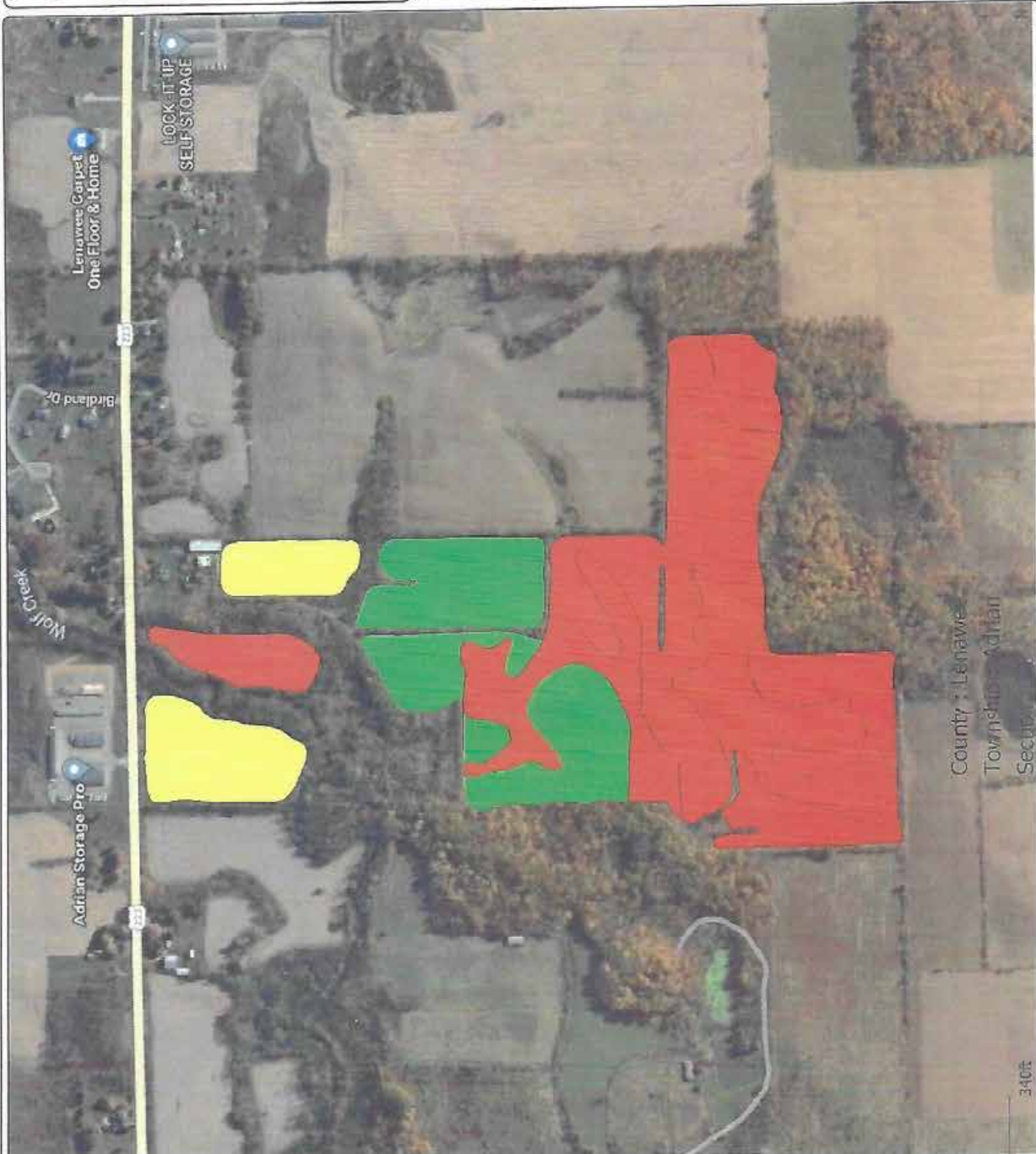
Target Rate (Mass)
 (lb/ac)
■ 350.0 (44.6 ac)
■ 300.0 (42.5 ac)
■ 250.0 (8.3 ac)

419 553-7970

B&M
C R O P
Consulting

Rx Lime and Fertilizer Application Maps - 2022

53 Schneider A31 Dundee Lime - 2022



Grower : Welden Farms
 Farm : 53 Schneider
 Field : A31
 Year : 2022
 Operation : Fertilizing Prescription (Dry)
 Crop / Product : Dundee Lime
 Area : 95.1 ac
 Total Amount : 110313.0 lb
 Average Rate : 1159.7 lb/ac
 Minimum Rate : 0.0 lb/ac
 Maximum Rate : 4000.0 lb/ac

Target Rate (Mass)
(lb/ac)

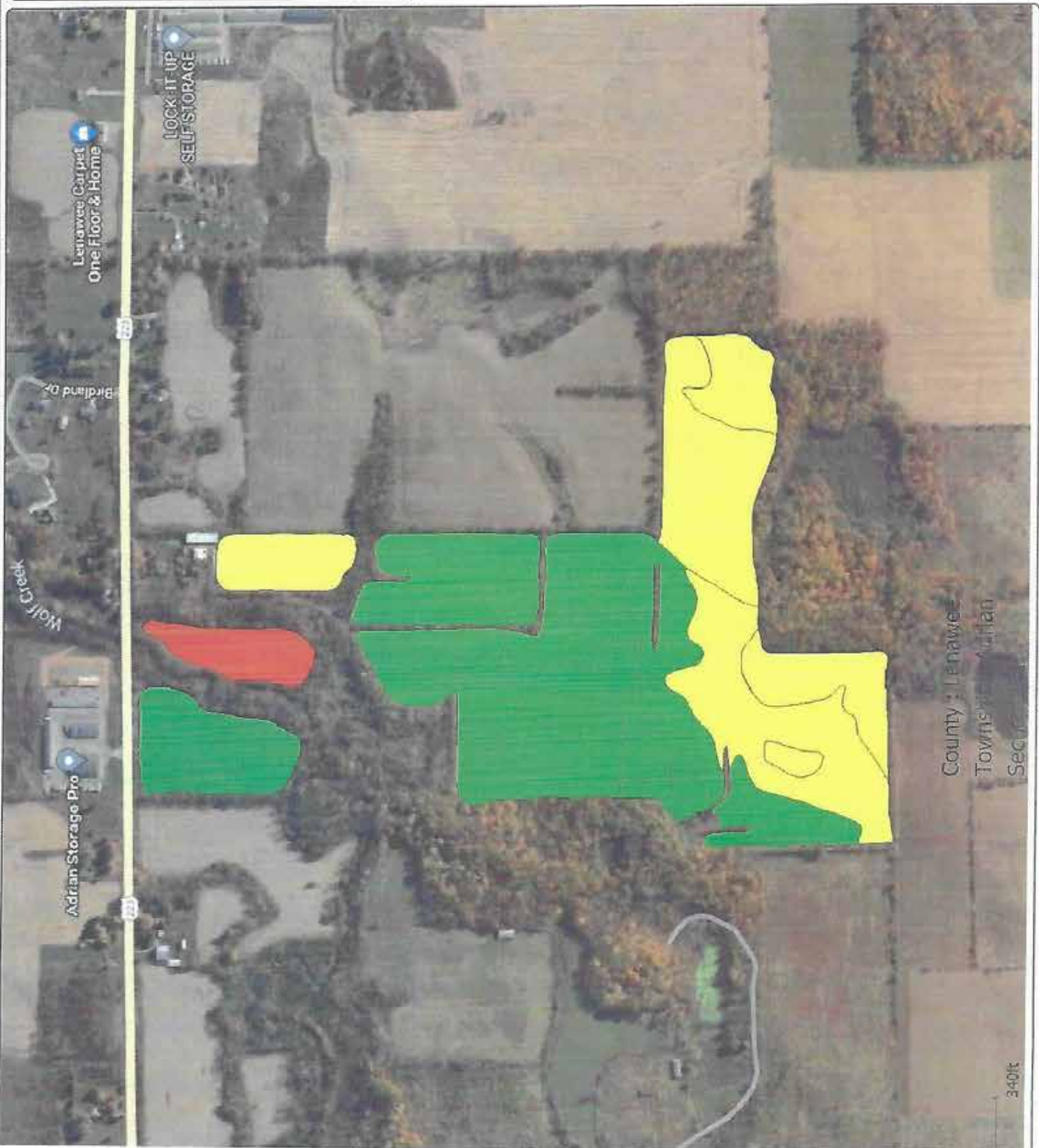
■	4,000.0 (21.8 ac)
■	2,000.0 (11.7 ac)
■	0.0 (61.9 ac)

419 553-7970

B&M
CONSULTING

Rx Lime and Fertilizer Application Maps - 2022

53 Schneider A31 Blend 2 - 2022



Grower : Welden Farms

Farm : 53 Schneider

Field : A31

Year : 2022

Operation : Fertilizing Prescription (Dry)

Crop / Product : Blend 2

Area : 95.1 ac

Total Amount : 26304.1 lb

Average Rate : 276.5 lb/ac

Minimum Rate : 200.0 lb/ac

Maximum Rate : 300.0 lb/ac

Target Rate (Mass)
(lb/ac)

- 300.0 (54.7 ac)
- 250.0 (36.7 ac)
- 200.0 (4.0 ac)

419 553-7970



Rx Lime and Fertilizer Application Maps - 2022



lb/A

BROOKSIDE LABORATORIES, INC.

54849-38

SOIL AUDIT AND INVENTORY REPORT

Name Welden Farms City _____ State _____

Independent Consultant B & M Crop Consulting, Inc. Date 6/16/2022

Sample Location		A31	A31	A31	A31	A31	
53 SCHNEIDER							
Sample Identification		1	2	3	4	5H	
Lab Number		0274-1	0275-1	0276-1	0277-1	0278-1	
Total Exchange Capacity (ME/100 g)		11.47	9.53	10.61	10.54	12.43	
pH (H ₂ O 1:1)		6.4	6.5	6.4	5.8	5.7	
Organic Matter (360°C LOI) %		2.74	2.48	2.73	2.39	3.32	
Estimated Nitrogen Release lb/A		75	70	75	68	83	
ANIONS	SOLUBLE SULFUR*	ppm	9	9	8	10	10
	MEHLICH III	lb/A P as P ₂ O ₅	115	151	87	60	87
		ppm of P	23	33	19	13	19
	BRAY-II	lb/A P as P ₂ O ₅	92	137	119	50	87
		ppm of P	20	30	26	11	19
OLSEN	lb/A P as P ₂ O ₅						
	ppm of P						
EXCHANGEABLE CATIONS	CALCIUM*	lb/A	3064	2538	2816	2388	2830
		ppm	1532	1269	1408	1194	1415
	MAGNESIUM*	lb/A	452	376	394	344	310
		ppm	226	188	197	172	155
	POTASSIUM*	lb/A	182	296	300	194	216
		ppm	91	148	150	97	108
	SODIUM*	lb/A	40	28	28	28	26
		ppm	20	14	14	14	13
BASE SATURATION PERCENT							
Calcium	%	66.78	66.58	66.35	56.64	56.92	
Magnesium	%	16.42	16.44	15.47	13.60	10.39	
Potassium	%	2.03	3.98	3.63	2.36	2.23	
Sodium	%	0.76	0.64	0.57	0.58	0.45	
Other Bases	%	5.00	4.90	5.00	5.80	6.00	
Hydrogen	%	9.00	7.50	9.00	21.00	24.00	
EXTRACTABLE MINORS							
Boron*	(ppm)	0.37	0.25	0.45	0.36	0.37	
Iron*	(ppm)	136	138	135	125	147	
Manganese*	(ppm)	63	61	74	80	75	
Copper*	(ppm)	1.87	1.80	1.69	1.93	1.45	
Zinc*	(ppm)	2.49	2.33	2.23	1.55	1.82	
Aluminum*	(ppm)	560	584	536	607	691	
OTHER TESTS	Soluble Salts (mmhos/cm)						
	Chlorides (ppm)						

* Mehlich III Extractable

Rx Lime and Fertilizer Application Maps - 2022

lb/A

BROOKSIDE LABORATORIES, INC. SOIL AUDIT AND INVENTORY REPORT

54849-38

Name Welden Farms City _____ State _____

Independent Consultant B & M Crop Consulting, Inc. Date 6/16/2022

Sample Location	53 SCHNEIDER	A31	A31	A31	A31
Sample Identification		6L	7H	8L	9H
Lab Number		0279-1	0280-1	0281-1	0282-1
Total Exchange Capacity (ME/100 g)		12.31	11.04	13.65	9.39
pH (H ₂ O:1:1)		6.7	7.3	6.9	6.5
Organic Matter (360°C LOI) %		3.34	2.61	3.35	2.24
Estimated Nitrogen Release lb/A		83	72	84	65

ANIONS	SOLUBLE SULFUR*		ppm				
	PHOSPHORUS	MELILICH III	lb/A P as P ₂ O ₅	92	55	115	101
			ppm of P	20	12	25	22
		BRAY II	lb/A P as P ₂ O ₅	105	101	105	78
			ppm of P	23	22	23	17
	OLSEN	lb/A P as P ₂ O ₅					
		ppm of P					
EXCHANGEABLE CATIONS	CALCIUM*		lb/A	3348	3166	3808	2480
			ppm	1674	1583	1904	1240
	MAGNESIUM*		lb/A	592	562	686	388
			ppm	296	281	343	194
	POTASSIUM*		lb/A	216	218	280	252
			ppm	108	109	140	126
	SODIUM*		lb/A	28	24	42	38
			ppm	14	12	21	19

BASE SATURATION PERCENT

Calcium	%	67.99	71.69	69.74	66.03
Magnesium	%	20.04	21.21	20.94	17.22
Potassium	%	2.25	2.53	2.63	3.44
Sodium	%	0.49	0.47	0.67	0.88
Other Bases	%	4.70	4.10	4.50	4.90
Hydrogen	%	4.50	0.00	1.50	7.50

EXTRACTABLE MINORS

Boron* (ppm)	0.39	0.52	0.72	0.54
Iron* (ppm)	130	124	183	145
Manganese* (ppm)	103	75	46	70
Copper* (ppm)	1.75	1.42	2.01	1.04
Zinc* (ppm)	2.48	1.52	1.76	1.44
Aluminum* (ppm)	561	548	641	640

OTHER TESTS	Soluble Salts (mmhos/cm)				
	Chlorides (ppm)				

* Mehlich III Extractable

Rx Lime and Fertilizer Application Maps - 2023

Adrian 31 53 Schneider Blend 1 - 2023



Grower : Weiden Farms

Farm : Adrian 31

Field : 53 Schneider

Year : 2023

Operation : Fertilizing Prescription (Dry)

Crop / Product : Blend 1

Area : 95.1 ac

Total Amount : 28602.4 lb

Average Rate : 300.7 lb/ac

Minimum Rate : 250.0 lb/ac

Maximum Rate : 350.0 lb/ac

Target Rate (Mass)
(lb/ac)

- 350.0 (21.8 ac)
- 300.0 (53.1 ac)
- 250.0 (20.5 ac)

419 553-7970



Rx Lime and Fertilizer Application Maps - 2024

Adrian 31 53 Schneider Dundee Lime - 2024

Grower : Welden Farms
Farm : Adrian 31
Field : 53 Schneider
Year : 2024
Operation : Fertilizing Prescription (Dry)
Crop / Product : Dundee Lime
Area : 96.9 ac
Total Amount : 40635.9 lb
Average Rate : 419.3 lb/ac
Minimum Rate : 0.0 lb/ac
Maximum Rate : 2000.0 lb/ac

Target Rate (Mass)
(lb/ac)
2,000.0 (20.4 ac)
0.0 (76.8 ac)

419 553-7970



B&M
C R O P
Consulting



Rx Lime and Fertilizer Application Maps - 2024

Adrian 31 53 Schneider Blend 1 - 2024



Grower : Weiden Farms
 Farm : Adrian 31
 Field : 53 Schneider
 Year : 2024
 Operation : Fertilizing Prescription (Dry)
 Crop / Product : Blend 1
 Area : 96.9 ac
 Total Amount : 28405.5 lb
 Average Rate : 293.1 lb/ac
 Minimum Rate : 250.0 lb/ac
 Maximum Rate : 300.0 lb/ac

Target Rate (Mass)
 (lb/ac)

300.0	(78.8 ac)
275.0	(10.1 ac)
250.0	(8.4 ac)

419 553-7970

B&M
C R O P
Consulting

Rx Lime and Fertilizer Application Maps - 2024

1b/A

BROOKSIDE LABORATORIES, INC. SOIL AUDIT AND INVENTORY REPORT

54849-41

Name Welden Farms City _____ State _____

Independent Consultant B & M Crop Consulting, Inc. Date 3/19/2024

Sample Location	Adrian 31	53 Schne	53 Schne	53 Schne	53 Schne	53 Schne
Sample Identification		1	2	3	4	5H
Lab Number		2372-1	2373-1	2374-1	2375-1	2376-1
Total Exchange Capacity (ME/100 g)		11.04	10.63	11.52	13.27	11.72
pH (H ₂ O 1:1)		6.5	6.4	6.7	7.1	6.6
Organic Matter (360°C LOI) %		2.12	2.08	2.42	2.77	2.65
Estimated Nitrogen Release	lb/A	62	62	68	75	73

ANIONS	SOLUBLE SULFUR*		ppm	10	11	11	11	12
	PHOSPHORUS	MEHLICH III	lb/A P as P ₂ O ₅	128	142	101	78	82
ppm of P			28	31	22	17	18	
BRAY II		lb/A P as P ₂ O ₅	124	124	110	87	78	
		ppm of P	27	27	24	19	17	
OLSEN	lb/A P as P ₂ O ₅							
		ppm of P						
EXCHANGEABLE CATIONS	CALCIUM*		lb/A	2954	2750	3260	3828	3306
			ppm	1477	1375	1630	1914	1653
	MAGNESIUM*		lb/A	462	420	430	644	422
			ppm	231	210	215	322	211
	POTASSIUM*		lb/A	222	358	350	286	286
			ppm	111	179	175	143	143
	SODIUM*		lb/A	34	28	32	36	30
			ppm	17	14	16	18	15

BASE SATURATION PERCENT

Calcium	%	66.89	64.68	70.75	72.12	70.52
Magnesium	%	17.44	16.46	15.55	20.22	15.00
Potassium	%	2.58	4.32	3.90	2.76	3.13
Sodium	%	0.67	0.57	0.60	0.59	0.56
Other Bases	%	4.90	5.00	4.70	4.30	4.80
Hydrogen	%	7.50	9.00	4.50	0.00	6.00

EXTRACTABLE MINORS

Boron* (ppm)	0.36	0.49	0.63	0.83	0.54
Iron* (ppm)	152	162	155	139	138
Manganese* (ppm)	58	68	72	106	86
Copper* (ppm)	2.26	2.23	2.26	2.50	1.72
Zinc* (ppm)	1.46	1.78	1.97	1.70	1.57
Aluminum* (ppm)	686	779	642	715	657
OTHER TESTS	Soluble Salts (mmhos/cm)				
	Chlondes (ppm)				

* Mehlich III Extractable

Rx Lime and Fertilizer Application Maps - 2024

1b/A

BROOKSIDE LABORATORIES, INC. SOIL AUDIT AND INVENTORY REPORT

54849-41

Name Welden Farms City _____ State _____

Independent Consultant B & M Crop Consulting, Inc. Date 3/19/2024

Sample Location			53 Schne	53 Schne	53 Schne	53 Schne
Adrian 31						
Sample Identification			6L	7H	8L	9H
Lab Number			2377-1	2378-1	2379-1	2380-1
Total Exchange Capacity (ME/100 g)			13.00	9.19	12.35	9.96
pH (H ₂ O 1:1)			7.1	7.0	6.8	6.2
Organic Matter (360°C LOI) %			2.98	2.76	3.03	2.12
Estimated Nitrogen Release lb/A			80	75	80	62
ANIONS	SOLUBLE SULFUR* ppm		9	8	14	12
	PHOSPHORUS	MEHLICH III lb/A P as P ₂ O ₅	137	78	115	82
		ppm of P	30	17	25	18
	BRAY II	lb/A P as P ₂ O ₅	206	73	151	69
		ppm of P	45	16	33	15
OLSEN	lb/A P as P ₂ O ₅					
	ppm of P					
EXCHANGEABLE CATIONS	CALCIUM*		3718	2544	3534	2468
	ppm		1859	1272	1767	1234
	MAGNESIUM*		644	478	522	394
	ppm		322	239	261	197
	POTASSIUM*		308	284	254	284
	ppm		154	142	127	142
	SODIUM*		32	30	34	32
	ppm		16	15	17	16
BASE SATURATION PERCENT						
Calcium %			71.50	69.21	71.54	61.95
Magnesium %			20.64	21.67	17.61	16.48
Potassium %			3.04	3.96	2.64	3.66
Sodium %			0.54	0.71	0.60	0.70
Other Bases %			4.30	4.40	4.60	5.20
Hydrogen %			0.00	0.00	3.00	12.00
EXTRACTABLE MINORS						
Boron* (ppm)			0.79	0.64	0.74	0.43
Iron* (ppm)			209	139	208	147
Manganese* (ppm)			77	66	48	76
Copper* (ppm)			2.92	1.30	2.03	1.23
Zinc* (ppm)			2.10	1.76	1.89	1.16
Aluminum* (ppm)			674	599	658	800
OTHER TESTS	Soluble Salts (mmhos/cm)					
	Chlorides (ppm)					

* Mehlich III Extractable