

# Online Only PERSONAL PROPERTY AUCTION

Lots Start Closing at 7:00pm **Sunday, November 2**

24212 River Rd  
Woodburn, IN 46797  
Near St Rd 101 & Notestine Rd

**EXCELLENT SELECTION OF QUALITY AND CLEAN ITEMS!**



**2012 FORD F-150 XLT**  
4x4 pick up, 5.0L, 150k miles  
clean, bed liner, chrome bumper  
& running boards



**ANTIQUES & COLLECTIBLES:**  
Ornate A B Chase pump organ and organ stool  
Ornate dresser with mirror  
Weber antique wood box farm wagon, excellent condition  
Horse drawn Selby corn planter  
Primitives: hay trolley, push cultivator, barn pulleys, horse drawn plow  
Large selection of Longaberger baskets, many Collectors Club and Anniversary Editions  
Dazey glass jar butter churn  
Woodburn Items: Larry & El's satin jacket & opener  
Woodburn wood building cut outs  
Pioneer Seed corn 12" thermometer  
Landmark metal thermometer  
Zane Grey novel hardback book set  
Hand tied comforters  
Retro GTE push button phone



**LAWN & GARDEN-TOOLS:**

61" Husqvarna M-ZT zero turn mower 27 HP  
48" lawn roller  
John Deere metal dump garden cart  
Lawn tools  
28' aluminum extension ladder  
Assorted hand tools  
Aluminum patio bistro set  
Metal park benches  
4 person fiberglass paddle boat



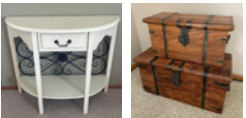
**MISCELLANEOUS:**

Large quantity of modern décor items, vases, urns and pottery  
Pots and pans  
Ping pong table  
Flat screen televisions-60"  
Definitive Technology tower speakers  
Large collection of Indiana University Sports Memorabilia: signs, balls, posters, pictures, Steve Alford & Keith Smart autographs and so much more!  
HP printer



**FURNITURE:**

Clauser country style china hutch-NICE  
Several accent and entry tables  
Oak sofa table  
Windsor style wood bench  
Large ornate entertainment 5 section wall unit  
Cable Nelson spinet piano  
3 matching bar stools  
Quality oak office desk and chair

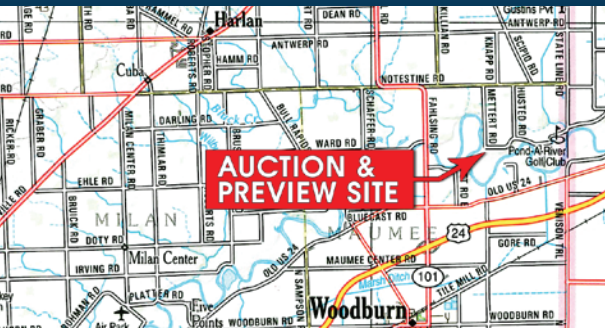


**FARM AND BARN ITEMS:**

Nice wood box flat wagon with hoist, John Deere gear 8 row Noble cultivator, folding 5 section John Deere drag harrow 3 point 22' harrow/cultivator 4' x 8' wood trailer



**PREVIEW:** Thursday October 30, 4:00-6:00 pm  
**LOAD OUT:** Tuesday November 4, Noon-5:30 pm



*Sellers:* Dick & Doris Zirkelbach

*Auction Mgr:* Mike Roy • 260.437.5428

**TERMS:** 12% Buyer's Premium on all purchases except the truck, which is 8%. All items sold "As-Is". The credit card you register with Hibid will be processed at the conclusion of the auction unless arrangements have been made with auction manager prior to the end of the auction. Payments on the truck can be cash, checks or transfers. To use a credit card on the truck will be a 3% fee.

**866.340.0445 • 260.749.0445**  
**SchraderFortWayne.com**



AC63001504, RC25-426  
Michael L. Roy, AU08602044 | Schrader Real Estate and Auction Company, Inc.