

Three Rivers, MI



LIVE INTERNET BIDDING  
Visit [SchraderAuction.com](http://SchraderAuction.com) for Details  
or call 800-451-2709.

- Tractors
- Harvest Equipment
- Planting
- Crop Care
- Technology
- Farm Equipment  
& Related Items
- Trucks & Trailers
- Farm Related &  
Attachments

# EQUIPMENT AUCTION

*Pace Family Farms*



**INVENTORY  
REDUCTION!**



**SCHRADER**  
Real Estate and Auction Company, Inc.

800.451.2709  
[SchraderAuction.com](http://SchraderAuction.com)

**Monday, December 8 • 10am**

Three Rivers, MI



LIVE INTERNET BIDDING  
Visit [SchraderAuction.com](http://SchraderAuction.com) for Details  
or call 800-451-2709.

# EQUIPMENT AUCTION

## Pace Family Farms



### Tractors

- 2024 Case IH 645 QUADTRAC, 36" Tracs, PTO, AFS Connect Receiver & Screen, Leather, Loaded, Hammer Strap, 6 Remote, 434 Hrs, before harvest, S# JEEZC645LRF514423
- 2024 Case IH 645 QUADTRAC, 36" Tracs, PTO AFS Connect Receiver & Screen, Leather, Loaded, Hammer Strap, 6 Remote, 654 Hrs, before harvest, S# JEEZ645CRF5144
- 2023 Case IH 540 QUADTRAC, 30" Tracs, 3 Pt. Coupler, PTO, AFS Connect Receiver & Screen, 6 Remote, Leather, Loaded, Hammer Strap, 1117 Hrs, before harvest S# JEEZC540HPF510675
- 2023 Case IH 540 QUADTRAC, 30" Tracs, 3Pt. Coupler, PTO, AFS Connect Receiver & Screen, 6 Remote, Leather, Loaded, Hammer Strap, 967 Hrs, before harvest, S# JEEZC540JPF10670
- T623 Case IH 290 Magnum, CVT, AFT, EP, 480/80R50 Duals, 380/80R38 Duals, 3pt. Coupler, 1000 PTO 5 Remote Power Beyond, Hammer Strap, Receiver & Screen, 18 Front Wts. 3955 Hrs, S# ZDRD09333
- T631 Case IH 290 Magnum, CVT, AFT, EP, 480/80R50 Duals, 380/80R38 Duals, 3pt. Coupler, 1000 PTO, 4 Remote Power Beyond, Hammer Strap, Receiver & Screen, Leather, 10 Front Wts. 4748 Hrs, S# ZDRD08427
- JD 6605 w/Loader, 4x4, ROPS, 460/85R34, 320/85R28, 3Pt. 2 Remote, PTO JD 740 QT Loader, Mat. Bucket, 2480 Hrs, S# L06605M307295
- Frontier Fork Att. Adj. Forks, AXFAP-12CJ0005427
- Frontier Bale Spear Att.
- JD 700H LPG Dozer, ROPS w/ Brush Gard, 30" tracks, 11' 6- way Blade, Rear Hitch 6667 Hrs,
- Root Rake Att. For JD 700H Dozer
- JD 310SJ Backhoe, Extend A Hoe, 4X4, Cab, 16.5-24, 13.5/80-18, Mat. Bucket, 30" Hoe Bucket, 2359 Hrs, S# T0310TJ118868
- IH 350 Farmall, Gas, Wide Front, 13.6x38, Fast Hitch, Spin Out Wheels, PTO Fenders

Inspection Dates: Fri, Dec. 5 • 10am-2pm & Sat, Dec. 6 • 10am-2pm

**SCHRADER**  
Real Estate and Auction Company, Inc.

800.451.2709  
[SchraderAuction.com](http://SchraderAuction.com)

# Monday, December 8 • 10am



**LIVE INTERNET BIDDING**  
Visit [SchraderAuction.com](http://SchraderAuction.com) for Details  
or call 800-451-2709.

**Auctioneer's Note:** Be on time! Bring a friend as we will be running two rings. Excellent line of late model, low houred equipment. Don't miss this auction! Go to [SchraderAuction.com](http://SchraderAuction.com) for online bidding plus more photos and information!



- ### Harvest Equipment
- 2023 Case IH 9250 Combine, Chrome edition w/extended wear, tracs, RWA, Loaded, Leather, Spreaders. AFS Connect, Receiver & Screen, 644 Hrs, before Harvest, S# HAJF9N4NHPG256633
  - 2023 Case IH 9250 Combine, Chrome edition w/extended wear, Duals, RWA, Loaded, Leather, AFS Connect, Receiver & Screen, 798 Hrs, before Harvest, S# HAJF9N4MCP253989
  - 2023 Case IH 4412F Folding Corn Head, 12x30", Chopping, Hyd. Fold, S# KTNKHCF2VP7920078
  - 2023 Case IH 4412F Folding Corn Head, 12x30", Chopping, Hyd. Fold S# KTNKCF2JP7920079
  - Horst Header Cart, Rear Steer, S# 1404833
  - Horst Header Cart, Rear Steer, S# 1405415
  - Unverferth AWS 42 Header Cart, 42' Rear Steer
  - Westfield WR100-31 Transport Auger, 10"x31", Electric Motor
  - Brent 1186 Grain cart, 1050/50R32, 1000 PTO Roll Tarp, S# B34770126
  - J&M 1150 GRAIN STORM Grain Cart, 1250/45-32, 1000 PTO Roll Tarp, S# 1407322

- ### Planting & Crop Care
- T632 2023 Case IH 2150 High Speed Planter w/high speed sensors, Early Riser, 24x30" AFS, Agronomic Design, Hyd. Clean Sweep Row Cleaners, Liq. Fert. 500 Gal. S# CBJY2150HNS10532
  - T633 2023 Case IH 2150 High Speed Planter w/high speed sensors, Early Riser, 24x30" AFS, Agronomic design, Hyd. Clean Sweep Row Cleaners, Liq. Fert. 500 Gal. S# CBJY2150LNS105325
  - JD 7200 Planter, Vac, 6x30" No Fert, Insect Att. S# A07200E200799
  - JD 600R Spreader Truck, VF420/95R50 Tires, New Leader DS 30 SS Box, Roll Tarp, 863 Hrs, S# 1N0600RXJP0230602
  - (4) JD Floater Wheels & Tires, 710/65R46, for JD Spreader Truck
  - 1200 Gal. Hagie SS Tank
  - 3600 Gal. Poly Horizontal Leg Tank

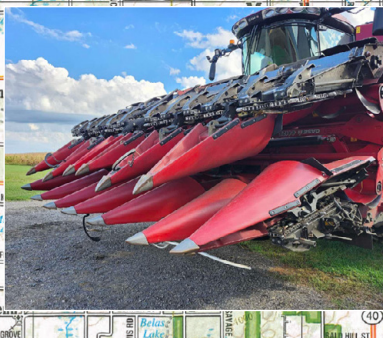
**Inspection Dates:** Fri, Dec. 5 • 10am-2pm  
& Sat, Dec. 6 • 10am-2pm

**OWNERS:** Pace Family Farms  
August • 269.214.7695  
Jacky • 269.744.4716

**AUCTION MANAGERS:**  
Ed Boyer • 574.215.7653  
Email: [ed@boyerpig.net](mailto:ed@boyerpig.net)  
& Ted Boyer • 574.215.8100

**SCHRADER**  
Real Estate and Auction Company, Inc.

800.451.2709  
[SchraderAuction.com](http://SchraderAuction.com)



**Auction Location:** 15691 North St. Three Rivers, MI 49093 • North of Three Rivers 7.5 mi. on US 131 OR South of Schoolcraft 3.5 mi. on US 131 to Flowerfield Rd. Go west to sale site.

# EQUIPMENT AUCTION

## *Pace Family Farms*



### *Technology*

- Ag Leader 6500 Base Station
- Ag Leader Screen
- Clean Sweep Controller, Planter
- (5) Ag Leader RTK Radios
- (2) Hagie 4600 Screens
- (3) Precision Planting Gen. 3 20/20 Screens

### *Farm Equipment & Related Items*

- Degelman Pro-till 40 High Speed Disc, 40' 600/50R22.5 Tires, Rear Rubber Rollers, S# PTL3468
- Degelman Pro-till 36 High Speed Disc, 36' 600/50R22.5 Tires, Rear Rubber Rollers, S# PTL4676
- Degelman 6000 Rock Picker, Rotary PU, 16.5L-16.1SL Tires
- JD 825 XUV Gator, 4X4, Diesel, Grill Gard, Windshield, Cage, Tilt Box, 765 Hrs, S# 1M0825GSH8M023821
- Polaris 500 Ranger, Pro Star, 4X4, Roof, Tilt Box, 517 Hrs, 6454 Miles, S# 3NSRCA572GG531148
- JD Z665 Zero Turn Mower, E-Z Trak, 27Hp. Gas, 320 Hrs, S# 1M0Z665X-HCM121049
- JD Z645 Zero Turn Mower, E-Z Trak, Gas, 60" Mower, 423 Hrs, S# M0Z645E040287
- Bush Hog 12815 Wing Fold Rotary Cutter, 15', Stump Jumpers, Laminated Wheels, 1000 PTO, S# 1200909
- Unverferth 325 GW, w/ Roll Tarp, 20" Rubber, Auger 7 Power Unit

### *Trucks & Trailers*

- T646 2016 Freightliner 113, Day Cab, DD 15 Eng, 10 Sp. 295/75R22.5 Air Ride, 434K Miles, VIN# F8915
- T647 2016 Freightliner 113, Day Cab, DD Eng, 10 Sp. 295/75R22.5 Alum Wheels, Air Ride, 513K Miles, VIN# F1814
- T645 2016 Freightliner 113, Day Cab, DD Eng. 10 Sp. 295/75R22.5, Air Ride, 469K Miles, VIN# F1811

- T643 2012 Freightliner 113, Day Cab, White, DD13 Eng, Auto Trans. 11R22.5, Air Ride, VIN# D9421
- T644 2012 Freightliner 113, Day Cab, White, DD13 Eng. Auto Trans, 11R22.5 Air Ride, VIN# D9418
- T651 2016 Kenworth T880, Day Cab, Blue, Paccar Eng. 9 Sp. 11R22.5, Alum. Wheels, Air Ride, 485K Miles, VIN# GJ116575
- T648 2011 Kenworth T800, Day Cab, Red, Cat. Eng. 9 Sp. Wet Kit, 295/75R22.5, Air Ride, VIN# BJ288863
- T649 2011 Kenworth T800, Day Cab, Red, Cat. Eng. 9 Sp. 295/75R22.5, Air Ride, VIN# BJ1288808
- T650 2008 Kenworth T800, Day Cab, Red, Cat. Eng. 9 Sp. 295/75R22.5, Air Ride, VIN# BJ1236092
- T652 2007 Peterbilt, Day Cab, Cat. Eng. 9 Sp. 11R22.5, Air Ride, Alum. Wheels, VIN# 733384
- T636 2023 Prestige Conveyor Hopper Bottom Trailer, 11R22.5 Alum. Wheels, Air Ride, Shur-Lok Roll Tarp, Fenders, VIN# 206496
- T635 2023 Prestige Conveyor Hopper Bottom Trailer, 11R22.5 Alum. Wheels, Fenders, Shur-Lok Electric Roll Trap, VIN# 206474
- T661 1988 SS 6000 Gal. Tanker Trailer, 11R22.5 tires, 3" Transfer Pump, VIN# 101147
- T660 1995 SS 4800 Gal. Tanker Trailer, 11R22.5 Tires, Alum Wheels, 3" Transfer Pump, VIN# 017216
- T639 2017 Wilson Pace Setter Alum. Hopper Bottom, 41', 11R22.5, Air Ride, Alum. Wheels, Shur-Lok Roll Tarp, VIN# 13008
- T638 2017 Wilson Pace Setter Alum. Hopper Bottom, 41', 11R22.5, Air Ride, Alum. Wheels, Shur-Lok Roll Tarp, VIN# 12645
- T634 2015 Wilson Alum. Pace Setter Hopper Bottom, 40', 11R22.5 Air Ride, Alum. Wheels, Shur-Lok Roll Tarp, VIN# 08094
- T640 2015 Wilson Alum. Pace Setter Hopper Bottom, 40', 11R22.5, Air Ride, Alum. Wheels, Shur-Lok Roll Tarp, VIN# 08089
- T641 2012 Timpe Alum. Super Hopper Bottom, 40', 11R22.5. Air Ride, Alum. Wheels, Thunder Roll Tarp, VIN# 143809

**Monday, December 8 • 10am**



- **T642 2012 Timpe Alum. Super Hopper Bottom, 40', 11R22.5, Air Ride, Alum. Wheels, Shur-Lok, Roll Tarp, VIN# 143808**
- **T637 2010 Wilson Alum. Pace Setter Hopper Bottom, 41', 11R22.5, Air Ride, Alum. Wheels, Shur-Lok Roll Tarp, VIN# 15147**
- **2019 Ford F250 Super Duty, STX, 4X4, Power Stroke, 4 Door, Air, Tilt, Cruise, Cloth Seats, 117K Miles before harvest, Gooseneck/5thWheel Package, VIN# G47924**
- **2019 Ford F250 Super Duty, STX, 4X4, Power Stroke, 4 Door, Air, Tilt, Cruise, Cloth Seats, 116K before harvest, Goose-neck/5thWheel Package, VIN# G47932**
- **2015 Ford F250 4X4, Power Stroke, 4 Door, Air Tilt, Cruise, Leather, Bradford Steel Flat Bed, 179K before harvest, VIN# B82542**
- **2012 Ford F250 Super Duty, FX4 Reg. Cab, 4x4, Air, Tilt, Cruise, 170K, VIN# 14538**
- **2009 GMC 2500 Sierra PU, Duramax, 4X4, 4 Door, Air, Tilt, Cruise,**
- **2004 Ford F 150 Triton SXT PU, Ext. Cab, 4X4, Air, Cruise, VIN# B09289**
- **2002 Ford Ranger Reg. Cab PU, 4X4, 4 Sp. Air Tilt, Cruise, 206K VIN# A54610**
- **Western 8.6 MVP3 Ultra V Blade Snowplow, w/ Ultra Mount 2**
- **2001 Chevy C6500 Truck, Cat. Diesel, Auto Trans, 245/70R16.5 Single Axle, 123K**
- **Dynaweld Eager Beaver Tandem Axle Trailer, 20' Deck 5' Beaver Tail, Ramps, Wood Floor, 9.50-16.5 Tires**

### *Farm Related & Attachments*

- **(8) Case IH 2100 Planter on Row Hoppers**
- **Case IH SS Fert. Tubes for 1200 Planter**
- **Case IH 1200 Series on Row Hoppers**
- **(2) Case IH 1200 Row Units**
- **Case IH 2100 Row Unit**
- **Case IH Concaves**
- **Precision Mini Hoppers**
- **(2) Hagie Row Feelers**
- **(3) Hagie Floater Wheels and Tires**
- **1000 Gal. Fuel Wagon**
- **(3) 1000 Gal. Fuel Tanks, on Skids**
- **500 Gal. Fuel Tank, w/ Pump**
- **100 Gal. L shape Fuel Tank**
- **100 Gal. Sq. Fuel Tank**
- **Crossover Toolboxes**
- **(3) Air Compressors**
- **100 Hp. Turbine Well Motor**
- **Irrigation Gearboxes**
- **Irrigation Pump**
- **TNL Gearboxes**
- **TNL Point Control**
- **(4) Small Gas Engines**
- **12K Generator**
- **Small Inductor**
- **Large Inductor**



Three Rivers, MI



Schrader Real Estate and Auction Company, Inc.  
Corporate Headquarters: 950 N Liberty Dr, PO Box 508  
Columbia City, IN 46725 #6505397356



December	SU	M	TU	W	TH	F	SA
		1	2	3	4	5	6
7	8	9	10	11	12	13	
14	15	16	17	18	19	20	
21	22	23	24	25	26	27	
28	29	30	31				

**AUCTION MANAGERS:**

Ed Boyer • 574.215.7653 #6505261770

Email: ed@boyerpig.net

& Ted Boyer • 574.215.8100 #6501225192

Follow Us On:



Get Our iOS App:



**TERMS:** Cash or Check w/proper ID. 3% convenience fee for credit cards. Announcements made the day of the auction take precedence over any printed material and oral statements made.



800.451.2709 • Schraderauction.com

# EQUIPMENT AUCTION

*Pace Family Farms*

## Monday, December 8 • 10am

Three Rivers, MI



- Tractors
- Harvest Equipment
- Planting
- Crop Care
- Technology
- Farm Equipment & Related Items
- Trucks & Trailers
- Farm Related & Attachments



800.451.2709  
SchraderAuction.com

# EQUIPMENT AUCTION

*Pace Family Farms*

**INVENTORY REDUCTION!**



## Monday, December 8 • 10am