

Coville FARM EQUIPMENT AUCTION

KALAMAZOO COUNTY, MI • 6537 E. T AVE. VICKSBURG, MI



**TRACTORS & TRUCKS
PLANTING & CROP CARE
HARVEST EQUIP. & GRAIN DRYING EQUIP.
FARM RELATED**

Monday, February 9 • 10am

LIVE INTERNET BIDDING
Visit SchraderAuction.com or
call 800-451-2709 for details.

Coville FARM EQUIPMENT AUCTION

Monday, February 9 • 10am

KALAMAZOO COUNTY, MI • 6537 E. T AVE. VICKSBURG, MI



**TRACTORS & TRUCKS
PLANTING & CROP CARE
HARVEST EQUIP. & GRAIN DRYING EQUIP.
FARM RELATED**

SCHRADER Coville FARM EQUIPMENT AUCTION

SCHRADER
Real Estate and Auction Company, Inc.
PO Box 508 • 950 N Liberty Dr
Columbia City, IN 46725
800.451.2709 • 260.244.7606
#AC63001504 • RC26-499



Follow Us and Get Our Schrader App:
Facebook, YouTube, App Store

Auction Managers
ED BOYER • 574.215.7653
ED@BOYERPIG.NET
TED BOYER • 574.215.8100



Monday, February 9 • 10am

LIVE INTERNET BIDDING
Visit SchraderAuction.com or
call 800-451-2709 for details.

FEBRUARY	Sun	MON	Tue	Wed	Thu	Fri	Sat
	1	2	3	4	5	6	7
	8	9	10	11	12	13	14
	15	16	17	18	19	20	21
	22	23	24	25	26	27	28

Terms: Additional 3% surcharge if you pay by credit card. All items are sold "AS IS", without any warranty of any kind. Payment is due by the end of the 2nd business day after the auction.

800.451.2709
SchraderAuction.com



800.451.2709
SchraderAuction.com

LIVE INTERNET BIDDING
Visit SchraderAuction.com or
call 800-451-2709 for details.

Coville FARM EQUIPMENT AUCTION

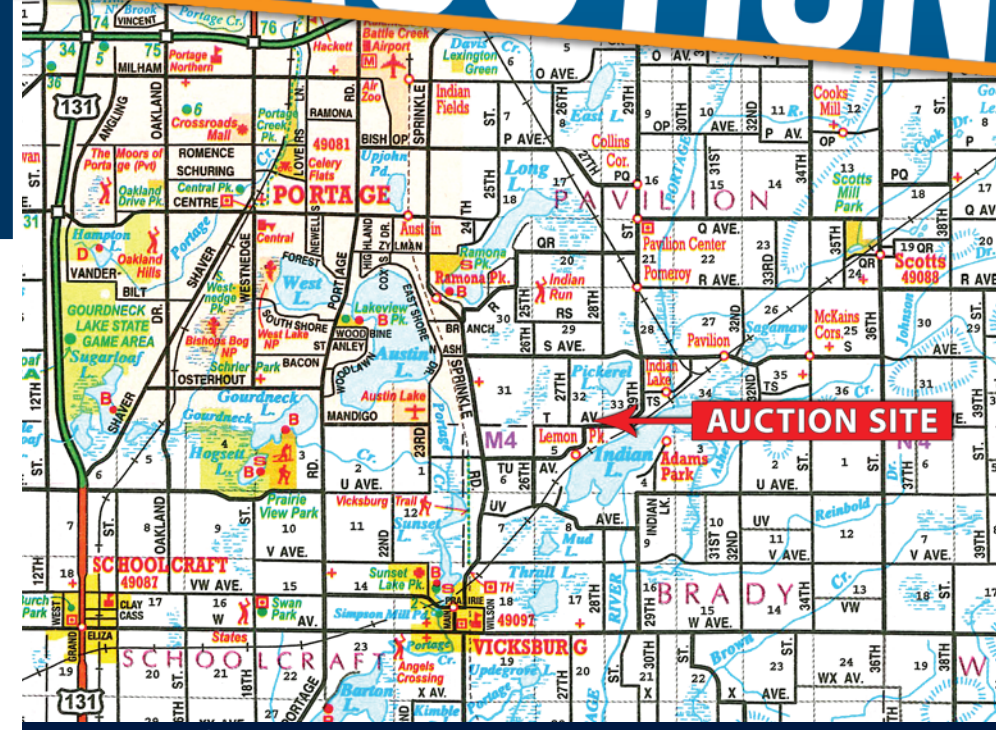


KALAMAZOO COUNTY, MI • 6537 E. T AVE. VICKSBURG, MI

Monday, February 9 • 10am

LIVE INTERNET BIDDING
Visit SchraderAuction.com or call 800-451-2709 for details.

AUCTION DIRECTIONS: FROM VICKSBURG: go north on Springle Rd. (24th St.) 1-1/2 Miles to TU Ave.
FROM KALAMAZOO AT I-94: go south on Springle Rd. 7-1/2 miles to TU Ave. Go east 3/4 mile to 26th St., then go north 1/2 mile to T Ave, and go east 1/2 mile to Auction Site.



TRACTORS & TRUCKS

- 2009 JD 8130 MFWD, PS, 18.4R46 Duals, 420/90R30 Frt. 3Pt. Coupler, 540/1000 PTO, 4 Remote Power Beyond, Green Star ready, Hammer Strap, Right Side Step, 12 Frt. Wts. 5363 Hrs. S# P047364 New Hyd. Pump
- 1979 JD 4440, QR, 18.4R38 Snap on Duals, 3Pt. Coupler, 540/1000 PTO, 2 Remote, 6700 Hrs. Approx. 200 Hrs. on Engine OH
- 2001 Ford F350 XL Flat Bed, 4X4, Dually, 7.3L Diesel, 5 Sp. Front Tow Hitch Adj. 94K Miles, Fuel Tank and Toolbox don't sell w/Truck
- L Shape Steel Fuel Tank w/ Fill-Rite Pump 20 gal. Elect.
- 1996 Ford L 9000 Grain Truck, 20' Reiter Inc. Alum. Box, Cargo Doors w/ 3 Slide Gates, SRT Roll Tarp, Cummins L10 Diesel, 9 Sp. 295/75R22.5 Tandem, 390K Miles
- 1984 Freightliner FL70 Grain Truck, 18' Midland steel Box, Cargo Doors w/ 3 Slide Gates, Shur-Lok Roll Tarp, Cummins L 8.3 Diesel, 6 Sp. 11R22.5
- 2017 Peterbilt 579 Day Cab, Paccar MX-13 Eng. Set at 380 Hp. Eaton 10 Sp. Air Ride, Deluxe Seats, 337K Miles, VIN #1XPBPD9X3HD410834 Nagel



PLANTING & CROP CARE

- JD 1790 CCS 12/23 Corn & Bean Planter, 12x30" 23x15", Complete Precision Update, Clean Sweep, Delta Force, Swath Module, V-Set, 6 Rows w/ WaveVision, Flow Sence, Furrow Jet, vApply, HD, Gen 2 20/20 Monitor
- ADS Bulk Seed Buggy Seed Tender Trailer, 2 Box Cap. Auger Load, Tandem Axle, Honda Eng. S# 5665
- Michigan Chief Liq. Tender Trailer, 1200 gal. Poly Tank, Tandem Axle, Transfer Pump
- Blu- Jet AT-3000 Fert. Applicator w/ 1000 gal. Poly Tank, 11 Shank Disks, Pull Type, 12.4-38, Gauge Wheels, 2- Hitches
- 2021 5000 gal. Endura Plas Poly Tank, Vertical, Black, 3" Banjo, LOCATED at 10238 1 1/2 Mile Rd. East LeRoy, MI. Calhoun Co.
- JD 630 Transport Disk, 24' 6 Wheel, Hyd. Fold, Scrapers, Rear Hitch
- J&M TF 212 Torsion Flex Rolling Basket, 28' Double Twist, Double Baskets, Spike Levelers, Adj. Hitch
- Glencoe Soil Saver, Disk Chisel, 9 shank, Furrows Levelers



HARVEST EQUIPMENT & GRAIN DRYING EQUIPMENT

- 2016 JD S660 Combine, RWA, 620/85R42 Duals, 28L-26 Rears, Green Star Ready, Contour Master, Chopper, Spreader, Copperhead Concaves, 2858 Eng. Hrs./2105 Sep. Hrs., S# G0786203
- 2017 JD 712FC Corn Head, 12x30" Folding, Inner Mesh Rolls
- JD 630F Flex Head, Hydro Flex, 30' Auger, SS Deck
- Unverferth HT 30 Head Mover, 30' Red
- Unverferth HT 30 Head Mover, 30' Green
- J&M 750-18 Grain Cart, 750 Bu. L 1000 PTO, 30.5L-32 Tires
- Killbros 385 G. Wagon, Hyd. Auger, Shur-Lok Roll Tarp, 20" Wheels, Adj. tongue
- 2023 AGI Mayrath HK2 10-63 Transport Auger, 10"x63' Electric Swing Hopper, Hyd. Lift, Pto.

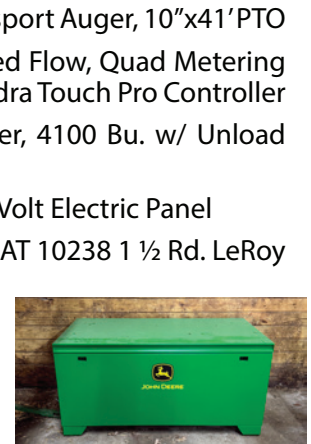


Inspection Dates: **FRIDAY, FEBRUARY 6 & SATURDAY, FEBRUARY 7 • 10AM - 1PM**

- 2023 AGI Mayrath 10-41, Transport Auger, 10"x41' PTO
- 2023 Sukup T 121 Dryer, Mixed Flow, Quad Metering Rolls, 220V Single Phase, Quadra Touch Pro Controller
- 2023 Sukup V Bottom Hopper, 4100 Bu. w/ Unload Auger Electric
- 2023 Square D 400 Amp. 240 Volt Electric Panel
- Sukup Dryer Equip. LOCATED AT 10238 1 1/2 Rd. LeRoy MI. Calhoun Co.

FARM RELATED

- JD 6000 Receiver
- JD 2630 Screen
- JD Steel Box, 24"x28"x72"
- DICKEY-john mini GAC 2500 Moisture
- New Trailer Saver BD3 5th Wheel Hitch
- Ag Pro Generator, PTO, 15 K
- Plus Misc. Items parts & supplies



Auction Managers:
ED BOYER • 574.215.7653
TED BOYER • 574.215.8100

Owners:
LYNN & STACEY COVILLE
Lynn 269.998.3144

Auctioneers Note:
Lynn and Stacey have a nice line of well-maintained equipment.
Be on time, very few smalls. The sale will be over before Noon.

800.451.2709 • SchraderAuction.com