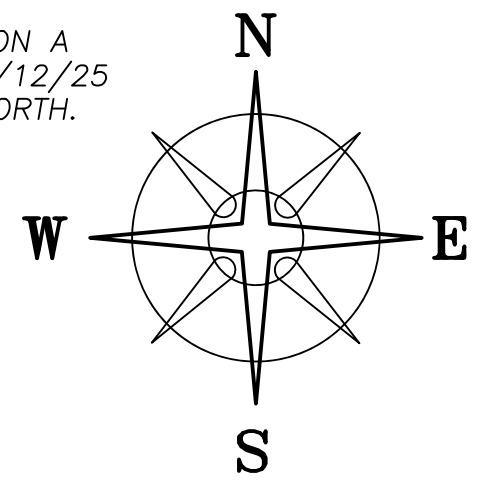
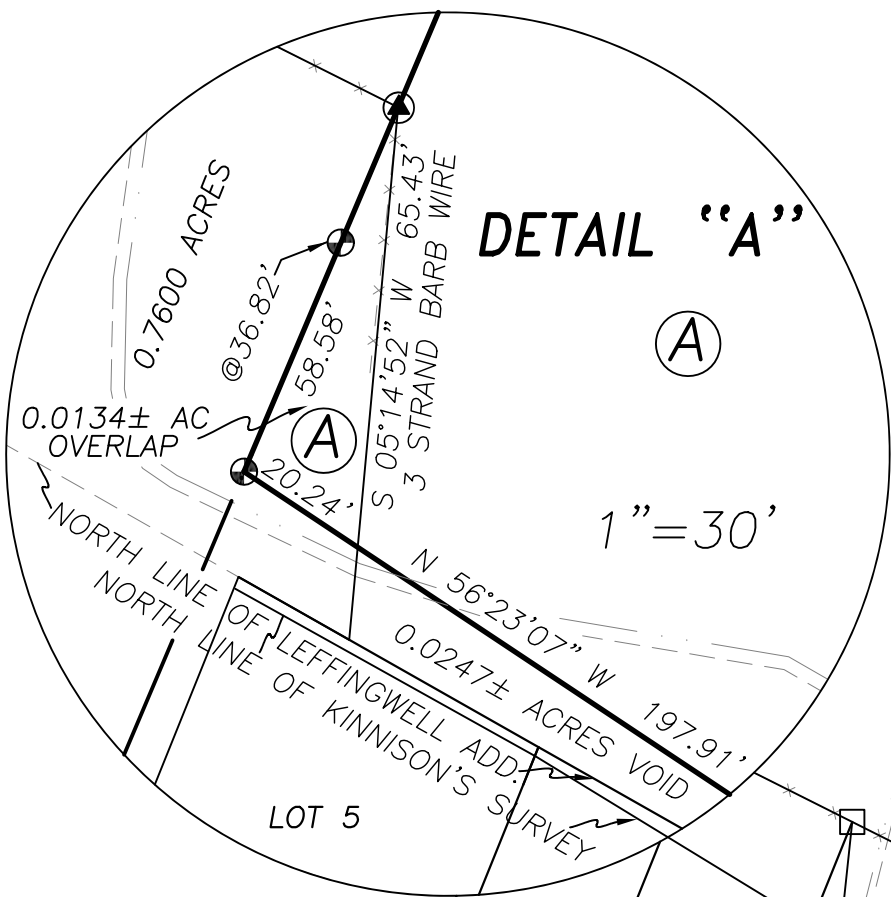


DEED REFERENCE
CROP PRODUCTION SERVICES, INC
 OR 354 PG 767
 PARCEL No. 060807107000
 (A) 8.117 ACRES

BEARINGS ARE BASED ON A
 GPS OBSERVATION ON 02/12/25
 WGS 1984 GEODETIC NORTH.



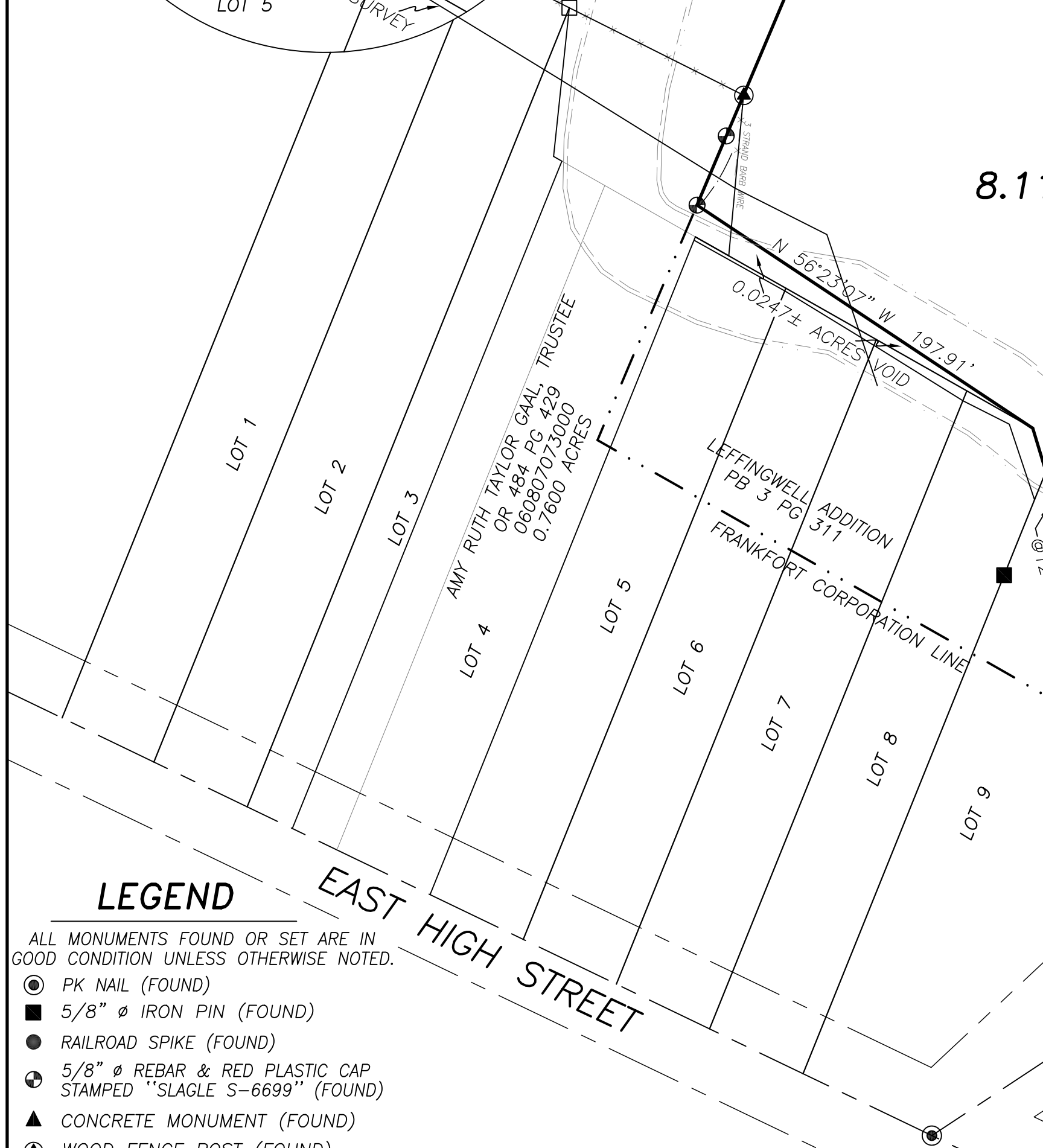
J L SCOTT METZGER &
 JILL CORY SMITH, TRUSTEE
 OR 551 PG 4718
 164.380 ACRES



RAMONA HAMMOND
 OR 498 PG 1924
 5.510 ACRES

FRANKFORT CORPORATION LINE

8.1165± ACRES (A)



WESTFALL ROAD (CR 101) (R/W VARIES)



I HEREBY CERTIFY THAT THIS PLAT DEPICTS
 AN ACTUAL FIELD SURVEY PERFORMED BY
 NATHAN L. COTTRILL, P.S. #8821
 DATE: 02/17/26

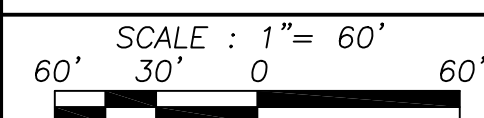
LEGEND

- ALL MONUMENTS FOUND OR SET ARE IN GOOD CONDITION UNLESS OTHERWISE NOTED.
- PK NAIL (FOUND)
- 5/8" Ø IRON PIN (FOUND)
- RAILROAD SPIKE (FOUND)
- 5/8" Ø REBAR & RED PLASTIC CAP STAMPED "SLAGLE S-6699" (FOUND)
- ▲ CONCRETE MONUMENT (FOUND)
- ▲ WOOD FENCE POST (FOUND)
- 1" Ø IRON PIPE (FOUND)
- 1/2" Ø IRON PIN (FOUND)

COTTRILL SURVEYING, INC

James R Cottrill, PS Nathan Cottrill, PE PS
 15882 US Route 62 NE, Mt. Sterling, Ohio 43143
 Office: (740) 869-3811 www.cottrillsurveying.com

**RESURVEY OF 8.1165± ACRES,
 CONCORD TOWNSHIP,
 ROSS COUNTY, STATE OF OHIO.
 SURVEYED FOR CROP PRODUCTION**



JOB No. S260202 CREW: MW,BC
 SURVEYED 02/16/26 DWN BY: NC
 DRAWN 02/17/26 CHECK: RC