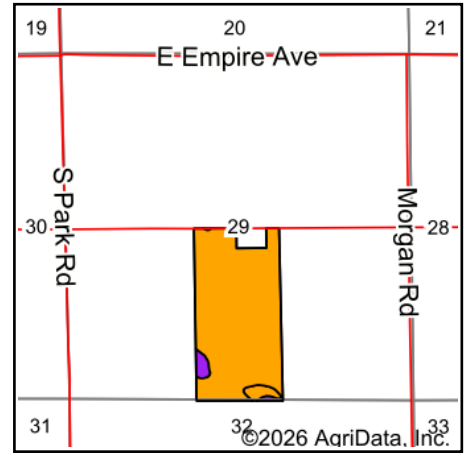
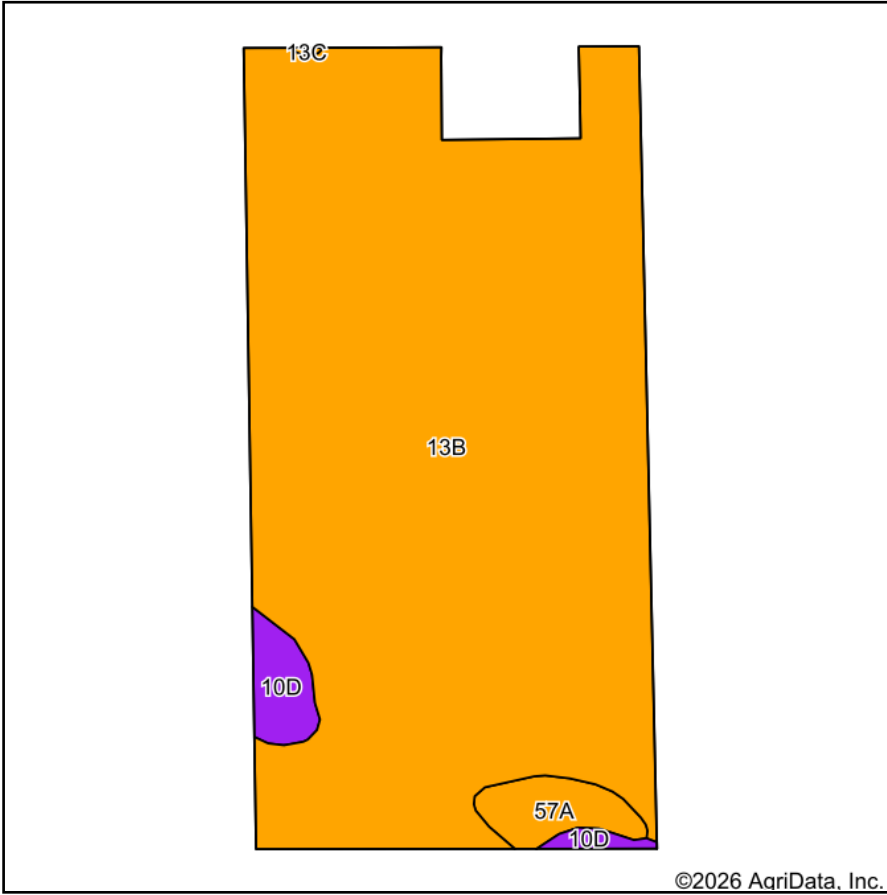


# Soils Map



State: **Michigan**  
 County: **Berrien**  
 Location: **29-4S-17W**  
 Township: **Bainbridge**  
 Acres: **77.5**  
 Date: **1/14/2026**



Area Symbol: MI021, Soil Area Version: 20

Code	Soil Description	Acres	Percent of field	Non-Irr Class Legend	Non-Irr Class	Irr Class	Corn Bu	Corn Irrigated Bu	Corn silage Tons	Corn silage Irrigated Tons	Oats Bu	Soybeans Bu	Soybeans Irrigated Bu	Winter wheat Bu
13B	Spinks loamy fine sand, 0 to 6 percent slopes	73.28	94.6%		III s	III s								
57A	Thetford loamy sand, 0 to 2 percent slopes	2.12	2.7%		III w		85	148	14	22	65	32		35
10D	Oakville fine sand, lake moderated, 6 to 18 percent slopes	2.10	2.7%		VIs									
<b>Weighted Average</b>					<b>3.08</b>	<b>*-</b>	<b>2.3</b>	<b>4</b>	<b>0.4</b>	<b>0.6</b>	<b>1.8</b>	<b>0.9</b>	<b>*-</b>	<b>1</b>

\*- Irr Class weighted average cannot be calculated on the current soils data due to missing data.