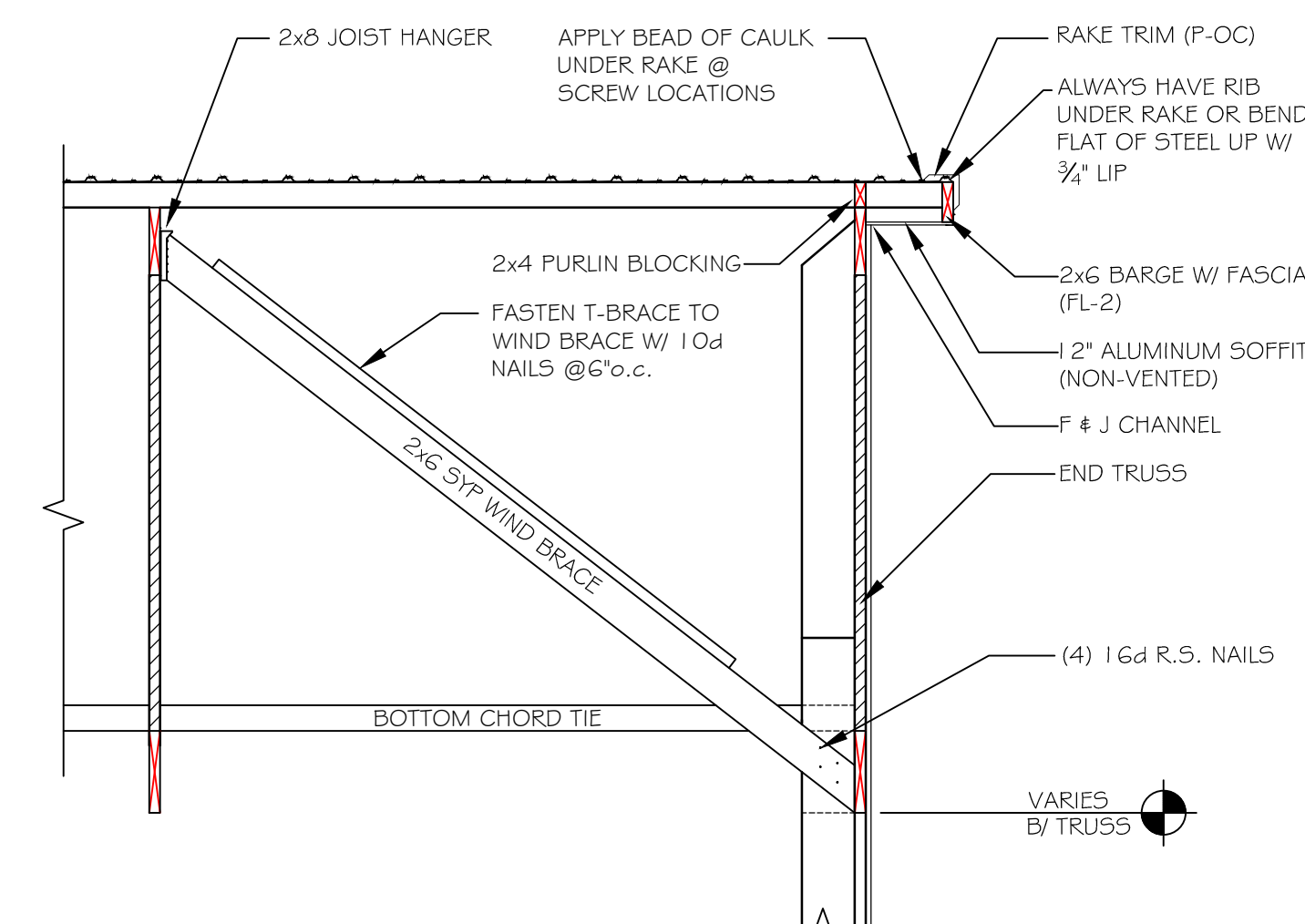
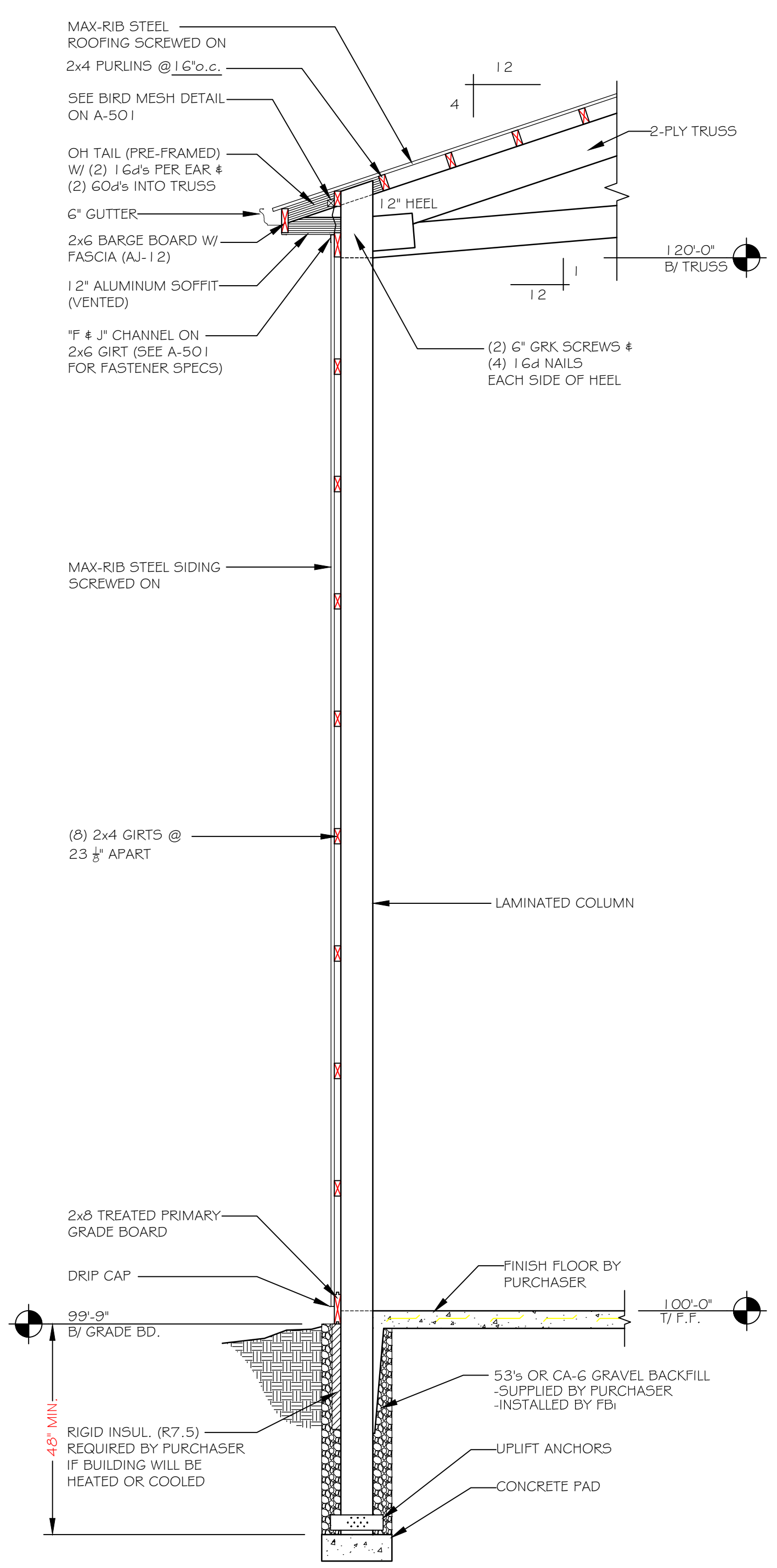


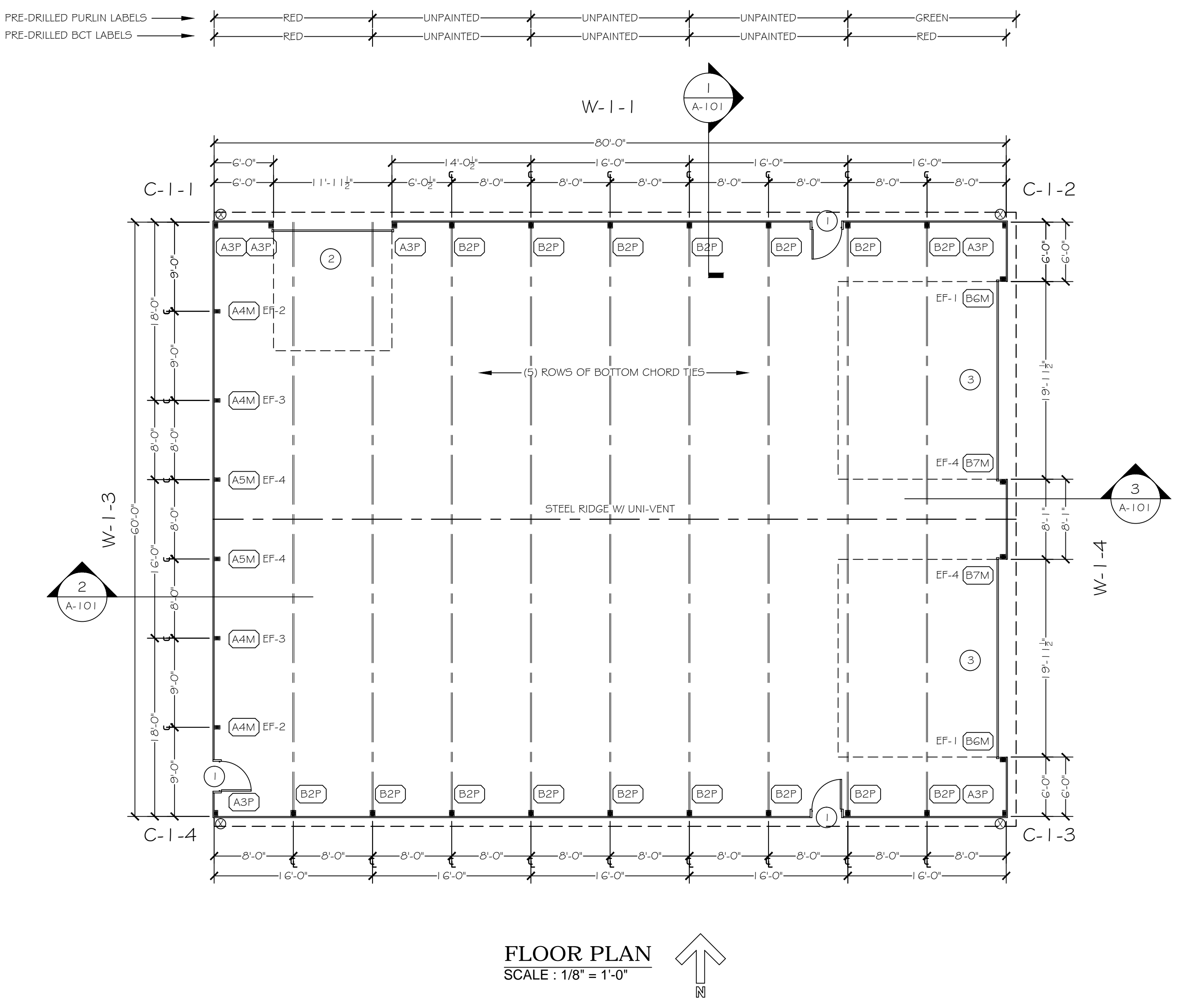
**2 WEST GABLE END SECTION**  
A-101 SCALE: 1/2" = 1'-0"



**3 EAST GABLE END SECTION**  
A-101 SCALE: 1/2" = 1'-0"



**1 WALL SECTION**  
A-101 SCALE: 1/2" = 1'-0"



**FLOOR PLAN**  
SCALE: 1/8" = 1'-0"

- Wood:**
- Design and construction of all structural wood members shall be in accordance with the current or referenced issue of AF&PA-NDS with supplement.
  - Minimum grades of all wood members shall be as follows unless noted otherwise:
    - Girts, purlins, studs & bracing - (2x4) #2 SYP or better - (2x6) purlins #2 SYP or better
    - Columns - (2x6) #1 SYP treated & non-treated
    - Truss webs, chords, headers, joist, rafters & all other framing material #1 or #2 SYP - (2x4 & 2x6)
    - Select Structural SYP - (2x8)
    - M3R 2400 SYP - (2x10 & 2x12)
    - 2.OE F<sub>b</sub> = 3,100psi - (LVL)
  - All members in contact with soil or concrete shall be treated to min 0.6 #/c.f. retention.
  - Plywood and OSB, when shown on construction documents shall be AFA rated.
  - Stud wall corners and intersections shall be framed with a min. of three or more studs.
  - Load-bearing headers in a stud wall shall have a min. of one cnpple under each end of the header and be fastened securely to full length studs immediately beside header.
  - Deflections of wood members shall be limited to the model building code-specified minimums.

- Standard Connection Details:**
- Nails shall be called out on drawings by penny weight. The following fasteners & specs have been used in design & shall be used in construction:
    - 10d x 1-1/2" - .148" x 1 1/2"
    - 10d - .120" x 3" threaded pneumatic
    - 16d - .162" x 3 1/2" common
    - 16d R.S. - .148" x 3 1/2" threaded hardened-steel
    - 20d - .177" x 4" threaded hardened-steel
    - 60d - .177" x 6" threaded hardened-steel
    - 80d - .207" x 8" threaded hardened-steel
  - Substitution of fasteners shall not be permitted without the written consent of the design engineer except as follows:
    - 10d nails may be used to replace 16d or 16d R.S. nails where specified at a 2:1 ratio.
    - 16d or 16d R.S. nails may be used to replace 10d nails where specified at a 2:3 ratio.
  - Unless noted otherwise all nails shall be evenly distributed over the connection area, placed in an orderly straight pattern, and shall be driven into the center of the narrow face of 2x members when applicable. Edge distances, end distances and spacings for nails shall be sufficient to prevent splitting of the wood. Nails that do not make a solid connection (inaccurate placement, driven between plies of lumber, etc) shall be removed and replaced or compensated with extra nails that meet the required specs.
  - Fasteners in pressure treated lumber must be hot-dipped galvanized or stainless steel.
  - All light-gauge metal connectors shall be fastened per manufacturer's specs.

**COLUMN SCHEDULE**

FULL COLUMNS OR STUBS							
LABEL	STUB / COL. SIZE	LENGTH	UPLIFT ANCHORS	UPLIFT ANCHOR FASTENERS	COMMENTS	BRACKET TYPE	STUB / COL. DEPTH
A	3-PLY 2x8	11'-0"	(2) 1 1/2" TR. BLOCKS	(10) 10d's PER BLOCK	TREATED STUB	N/A	4'-0"
B	4-PLY 2x8	13'-0"	(2) 1 1/2" TR. BLOCKS	(10) 10d's PER BLOCK	TREATED STUB	N/A	4'-0"

**COLUMN TOP SCHEDULE**

TIP-UP COLUMN TOPS		
LABEL	COLUMN SIZE	COMMENTS
2	4-PLY 2x8	SIDE TOP
3	3-PLY 2x8	DOOR / CORNER TOP
4	3-PLY 2x8	END TOP (20'-0")
5	3-PLY 2x8	END TOP (22'-0")
6	4-PLY 2x8	END TOP (20'-0")
7	4-PLY 2x8	END TOP (22'-0")

**PAD SIZE / TYPE**

LABEL	PAD SIZE	TYPE	MISCELLANEOUS NOTES
M	14" Ø x 4"	PRE-CAST	N/A
P	20" Ø x 8"	P.I.P.	N/A

**END FILL SCHEDULE**

LABEL	COLOR / LENGTH
EF-1	RED
EF-2	GREEN
EF-3	YELLOW
EF-4	ORANGE

**PRE-CUT GIRTS SCHEDULE**

GIRT LENGTH (-1/16")	COLOR
18'-0"	RED
16'-0"	GREEN
14'-0 1/2"	YELLOW
8'-1"	ORANGE
8'-0"	PURPLE
6'-0"	BLUE

**OPENINGS SCHEDULE**

LABEL	TYPE	MFR/MODEL	SIZE	ROUGHOUT	ACCESSORIES	HEADER SIZE	DETAIL LOCATION / COMMENTS
1	WALKDOOR	AJ #5600 SERIES	30G8	40 3/16" x 81 1/8"	SOLID PANEL, TEMPORARY LOCKSET BY FBI		
2	OVERHEAD	BY FBI SUBCONTRACTOR	12' x 12'	11'-11 1/2" x 11'-11 1/2"	SEE SUPPLIER'S QUOTE	(4) 2x12 BLKD	SEE DOOR #2 DETAIL ON A-501
3	OVERHEAD	BY FBI SUBCONTRACTOR	20' x 16'	19'-11 1/2" x 15'-11 1/2"	SEE SUPPLIER'S QUOTE	2x8 / 2x8 / 2x8	SEE DOOR #3 DETAIL ON A-501

**MISCELLANEOUS NOTES**

SIDING SCREW PATTERN NOTE:  
LAP SCREW (THROUGH RIB) CANNOT BE LEFT OUT AT DRIP CAP, Z-TRIM (IF INCLUDED), AND EAVE LOCATIONS

⊗ = 4' x 3' DOWNSPOUT LOCATION

DIAGONAL: (60'-0" x 80'-0") = 100'-0"

**MISCELLANEOUS PRE-CUT SCHEDULE**

LENGTH	COLOR	COMMENTS
7'-8 7/8"	RED	2x2 BIRD NET BOARD
7'-8-7/8"	GREEN	2x4 FALSE PURLINS

NO.	DATE	BY	DESCRIPTION

**Hop Head Farms - Picker Building**  
6090 Napier Rd.  
Benton Harbor, MI 49023

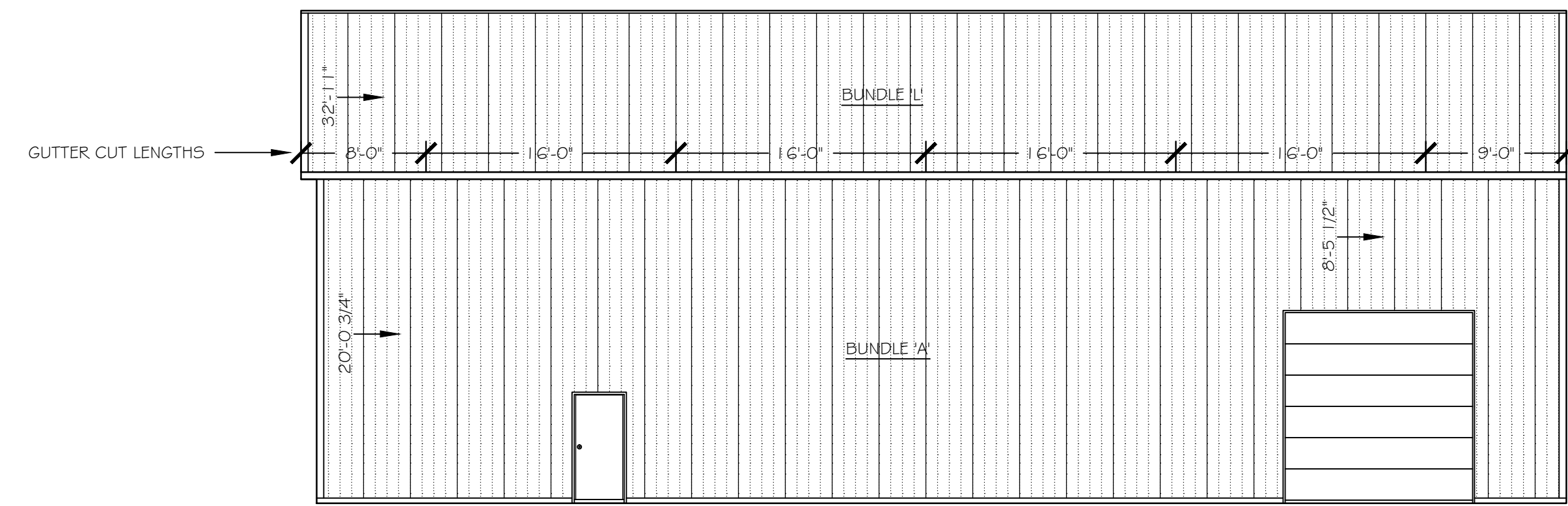
SHEET TITLE:  
**FLOOR PLAN**

**FBI Buildings**  
fbibuildings.com • (800) 552-2981

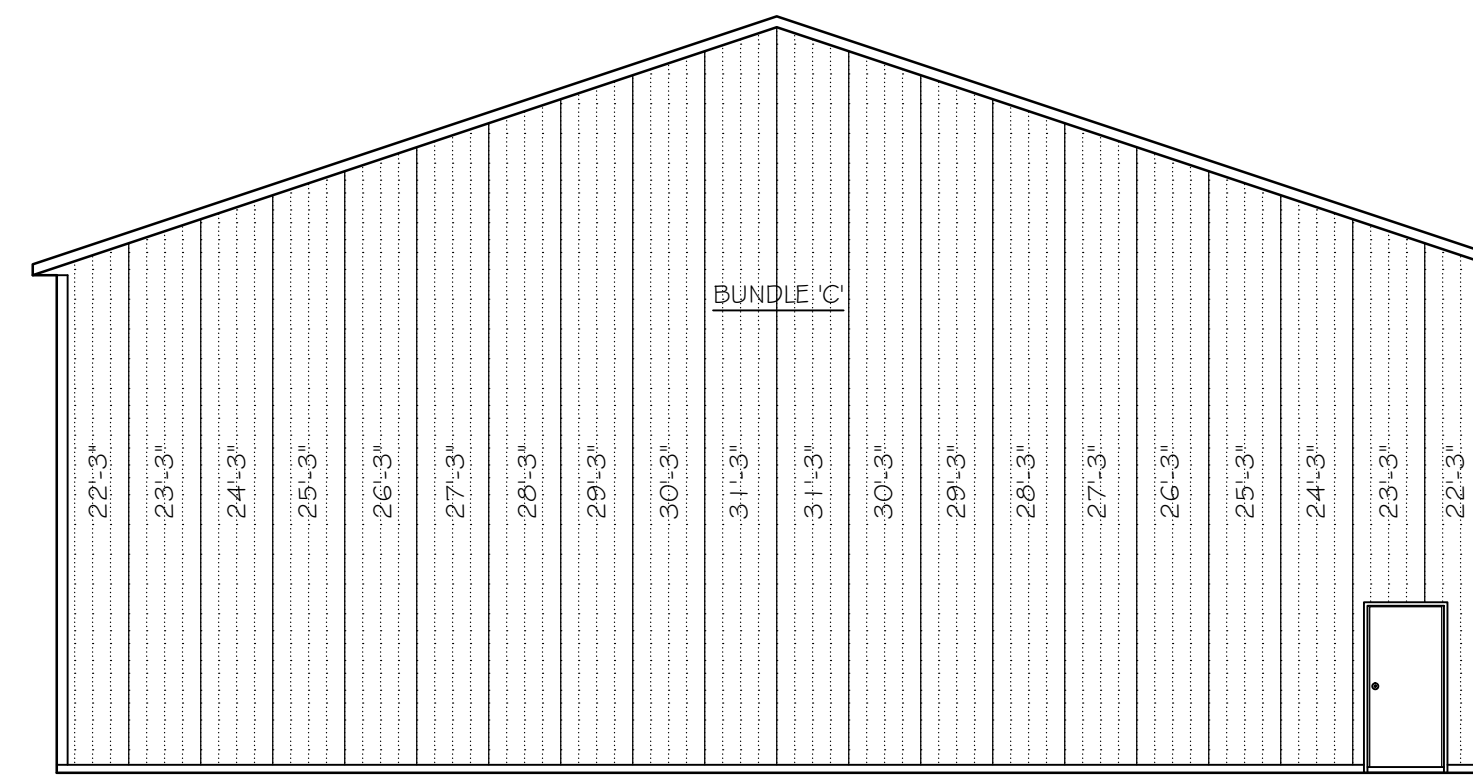
DRAWN BY:			
MTO BY:			
PSC:			
SHEET:			

**A-101**

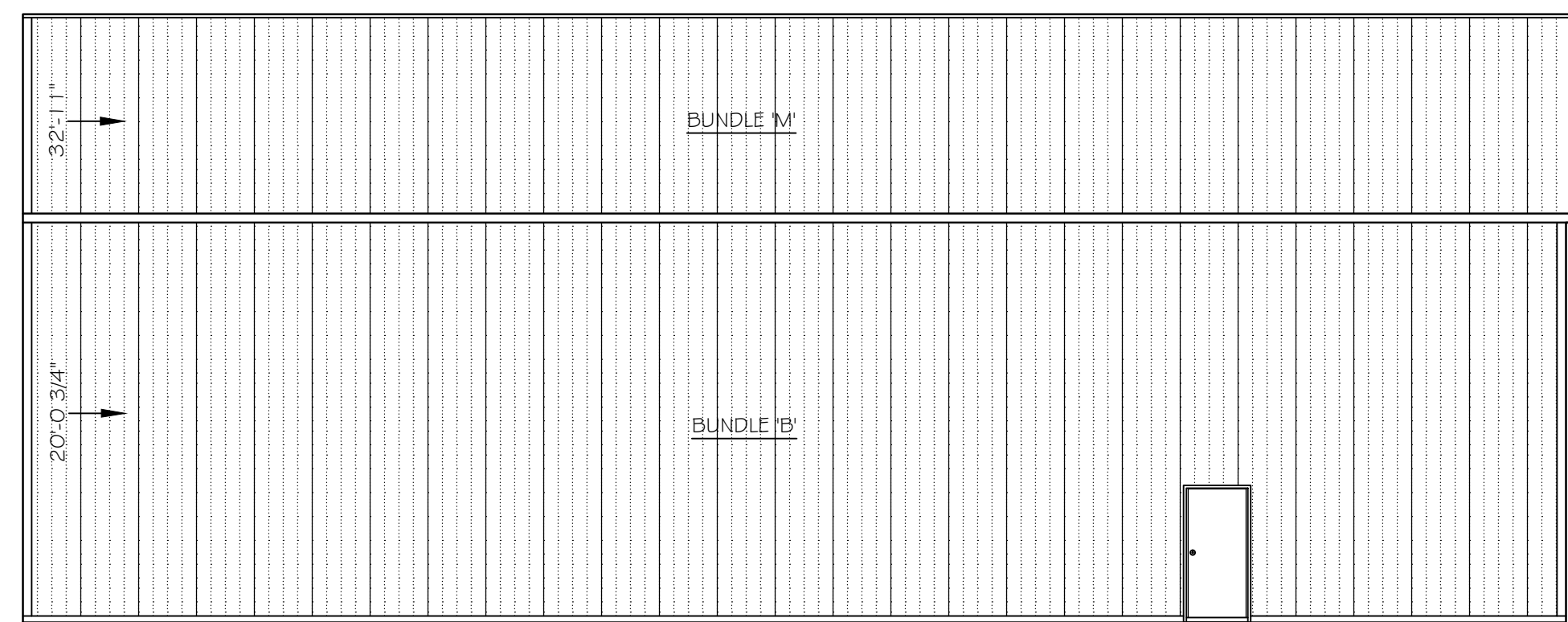
FBI PROJECT #: 12520



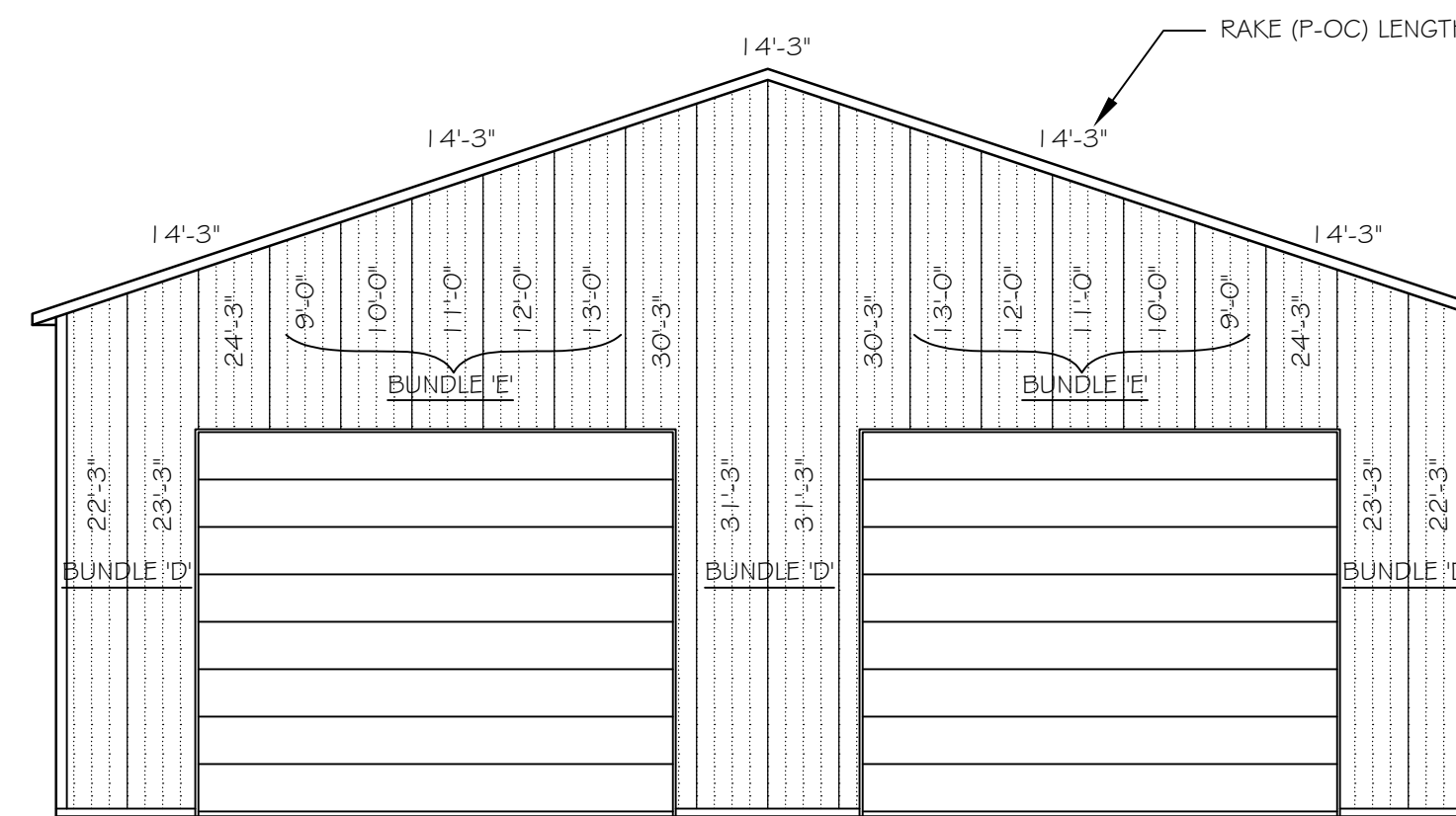
**NORTH SIDE ELEVATION**  
SCALE: 1/8" = 1'-0"



**WEST END ELEVATION**  
SCALE: 1/8" = 1'-0"



**SOUTH SIDE ELEVATION**  
SCALE: 1/8" = 1'-0"



**EAST END ELEVATION**  
SCALE: 1/8" = 1'-0"

FINISH GRADE ELEVATION AT BUILDING PERIMETER TO BE BELOW STEEL SIDING DRIP CAP AND ABOVE THE BOTTOM OF THE PRIMARY GRADE BOARD.

SEAL

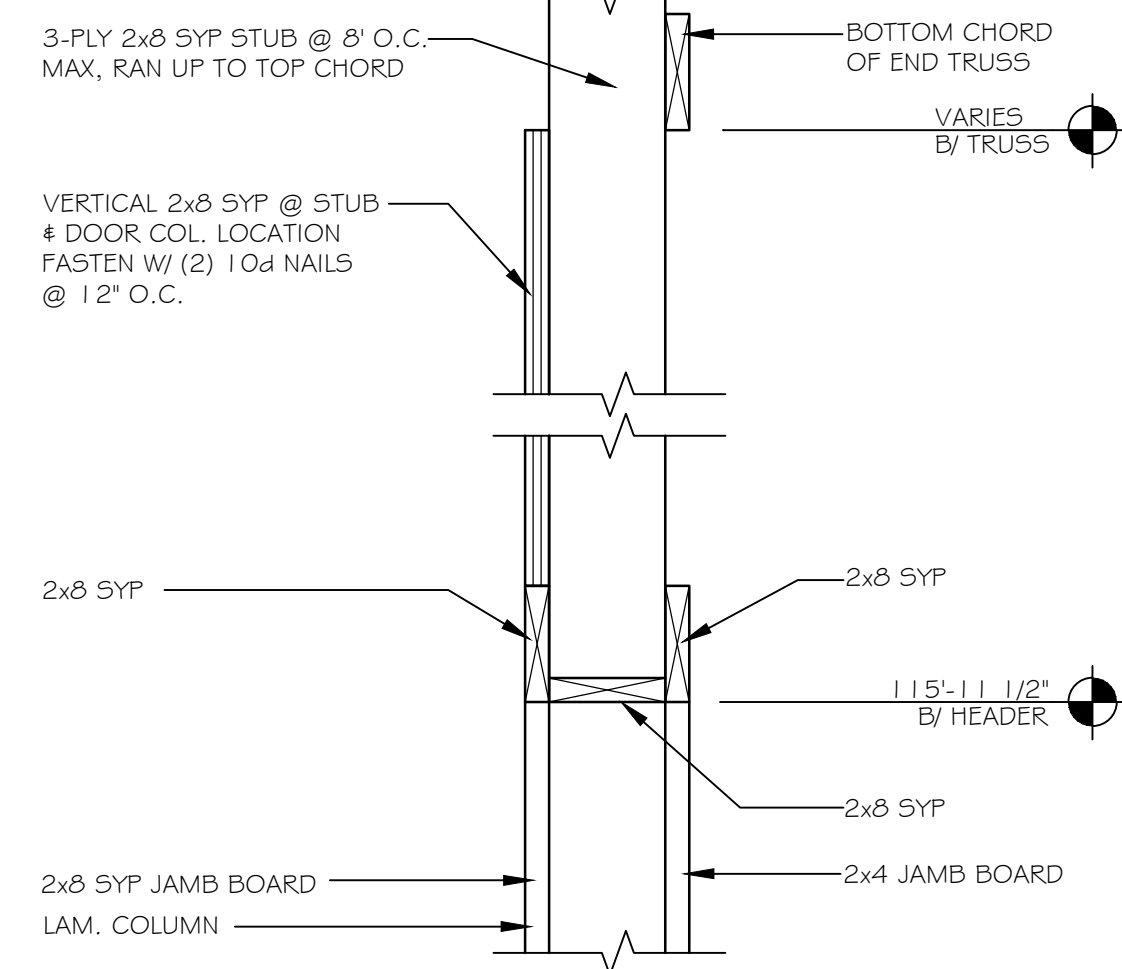
**Hop Head Farms - Picker Building**  
6090 Napier Rd.  
Benton Harbor, MI 49023

SHEET TITLE:  
BUILDING ELEVATIONS

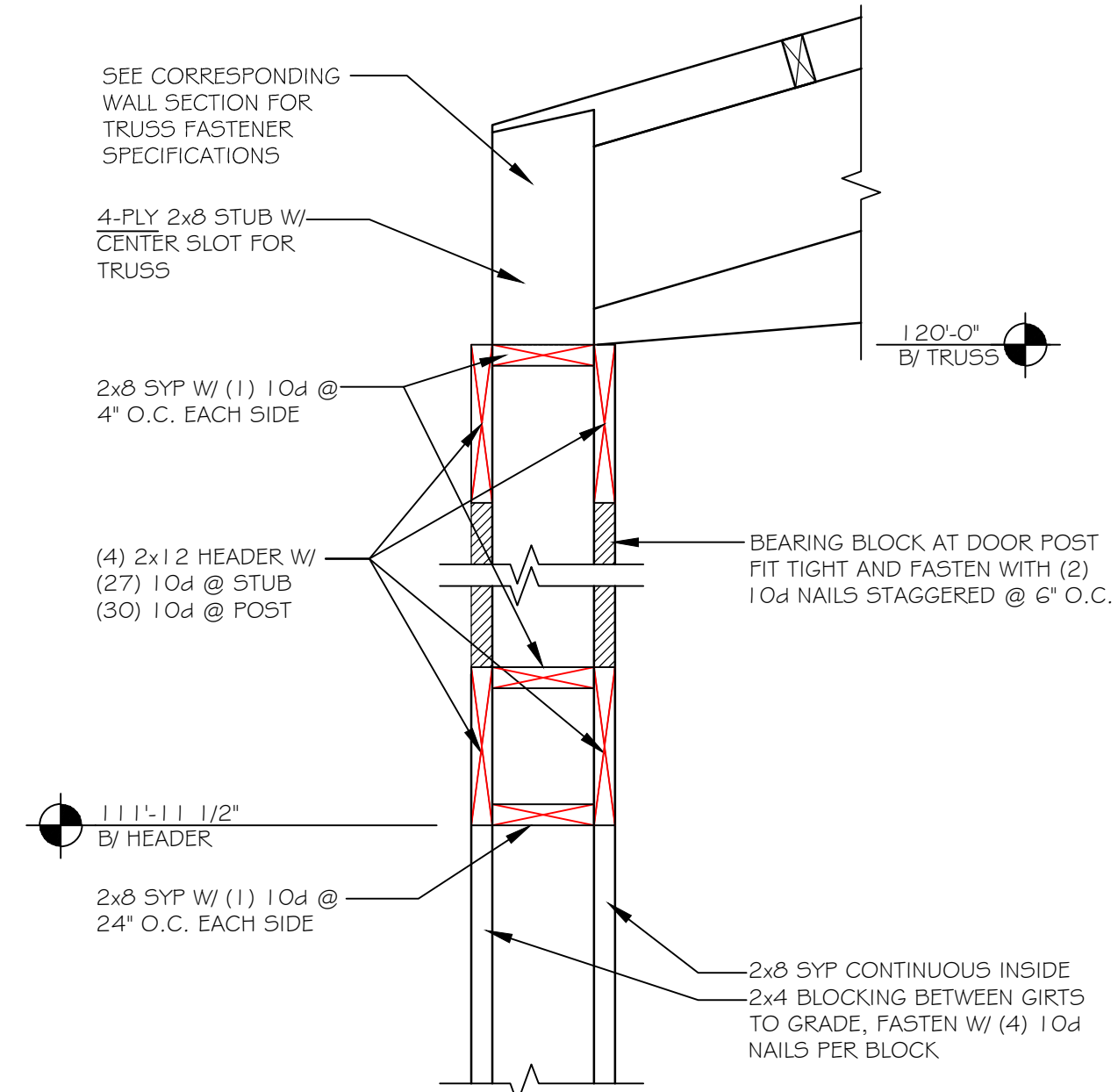
**FBI Buildings**  
fbbuildings.com • (800) 552-2981

DRAWN BY:	BILL B
MTD BY:	XX
PSC:	KEN KOSINSKI
SHEET:	<b>A-201</b>
FBI PROJECT #:	125320

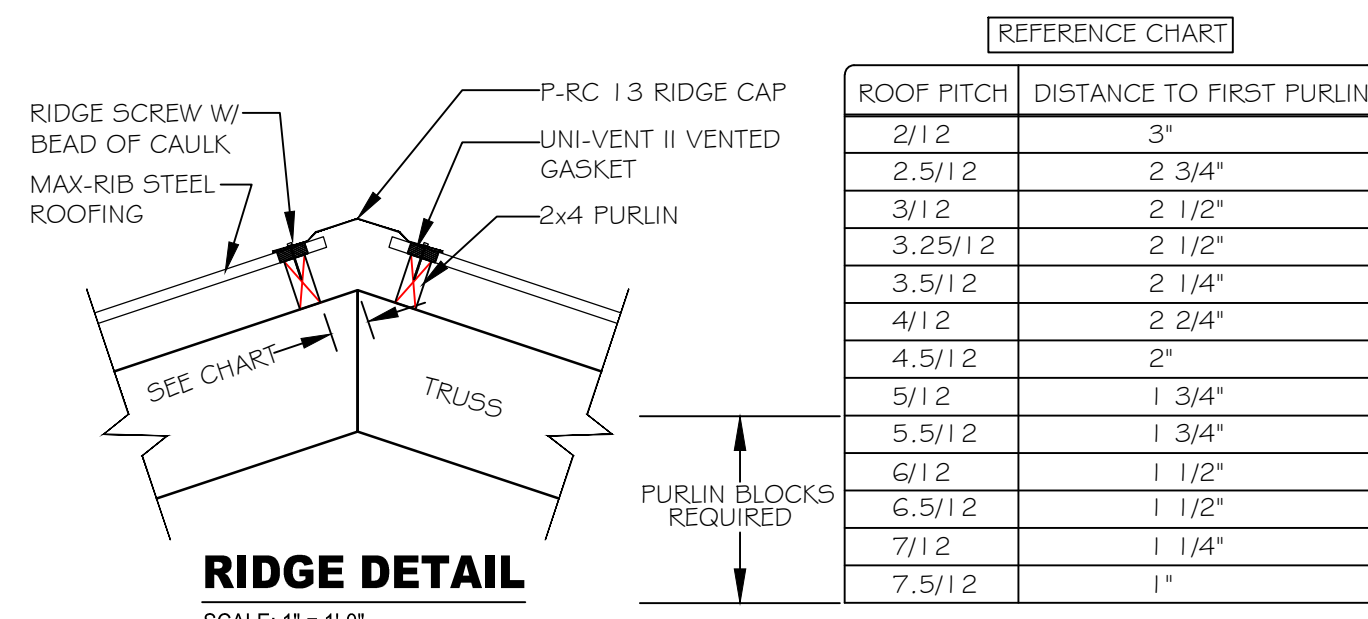
NO.	DATE	BY	DESCRIPTION
06-01-16	06-01-16	BILL B	Comments Set
06-01-16	06-01-16	BILL B	PERMIT SET



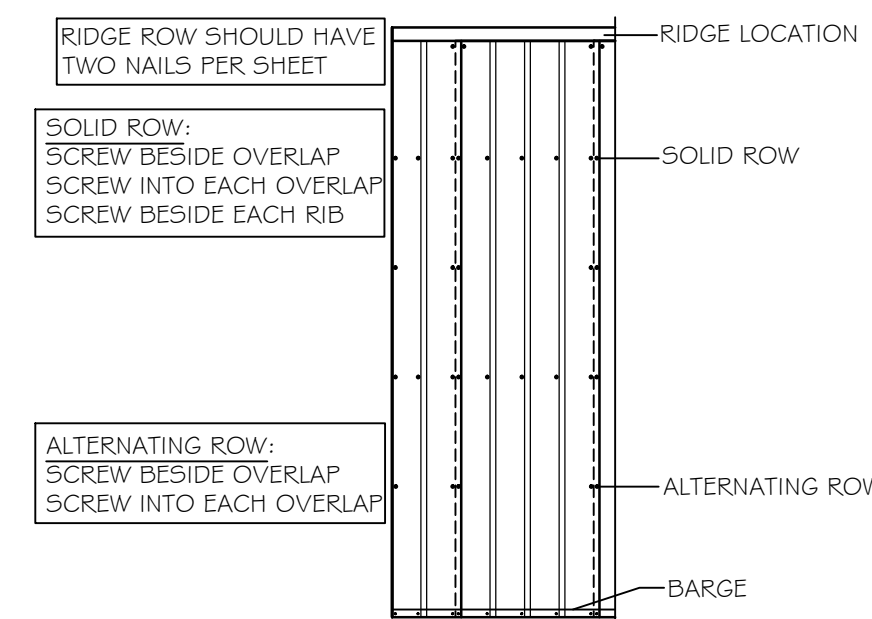
**DOOR #3 HEADER DETAIL**  
SCALE: 1" = 1'-0"



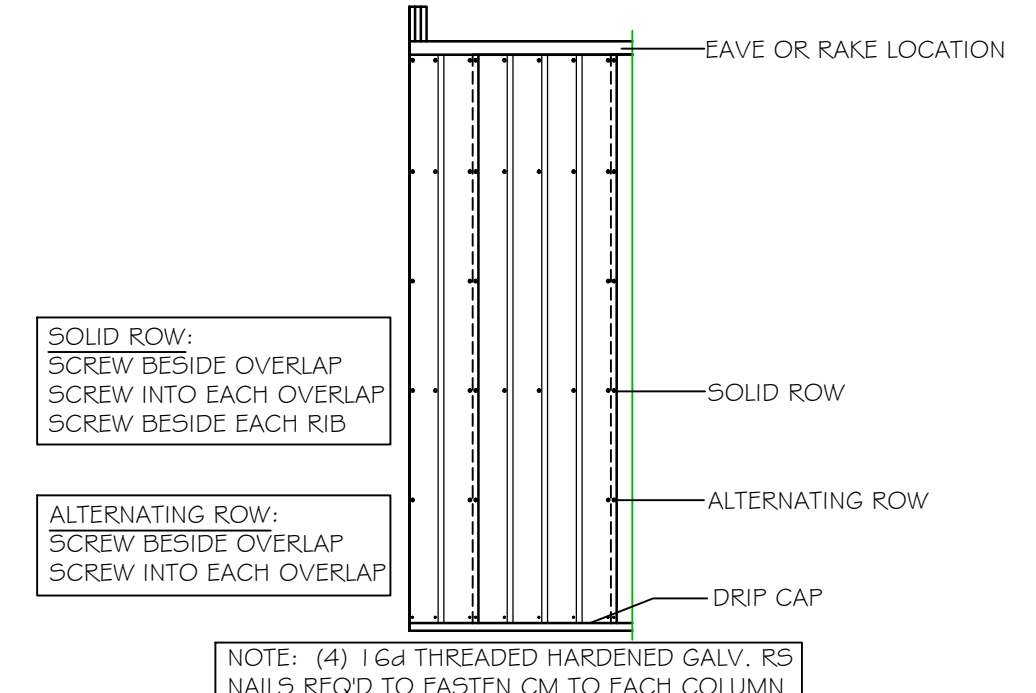
**DOOR #2 HEADER DETAIL**  
SCALE: 1" = 1'-0"



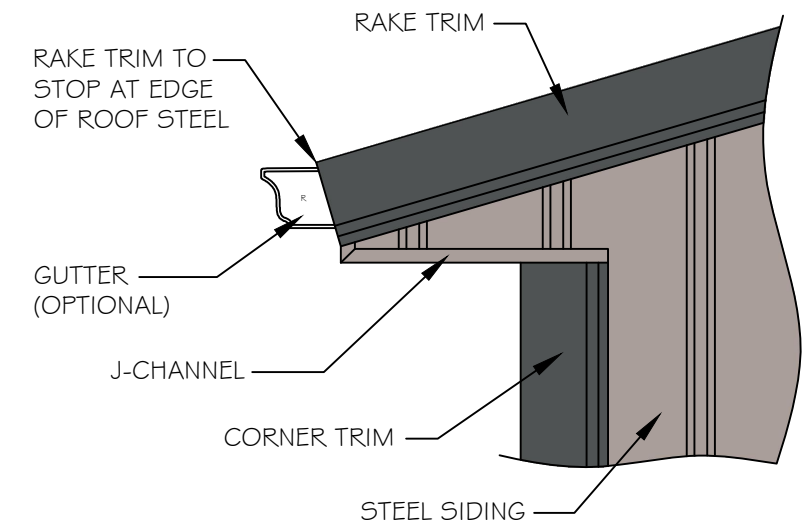
**RIDGE DETAIL**  
SCALE: 1" = 1'-0"



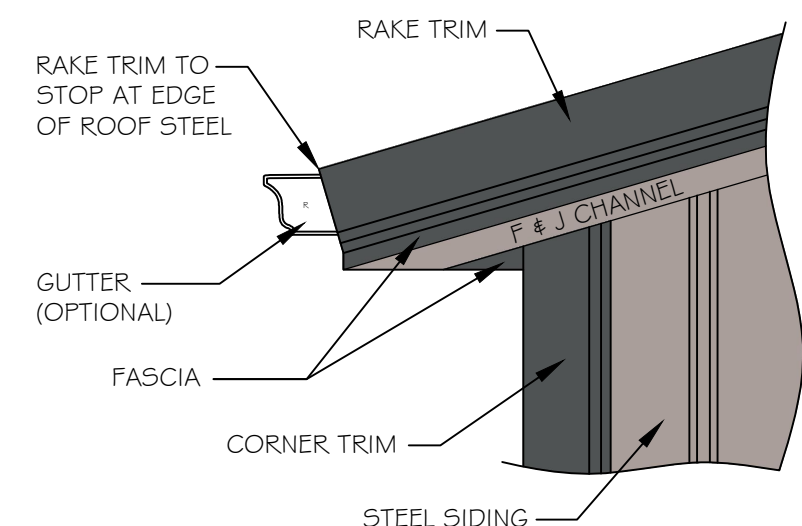
**ALTERNATING SCREW PATTERN (ROOF)**  
SCALE: 1/4" = 1'-0"



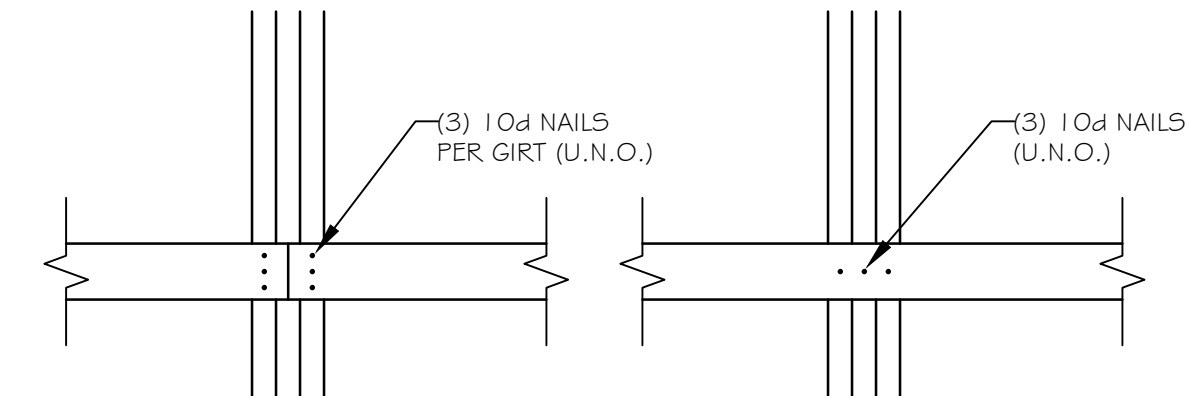
**ALTERNATING SCREW PATTERN (WALL)**  
SCALE: 1/4" = 1'-0"



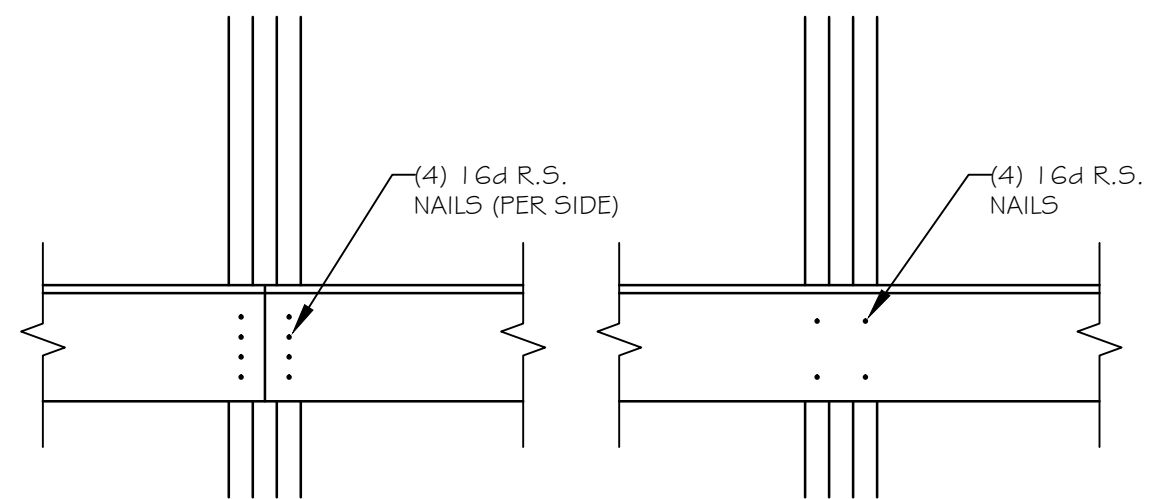
**RAKE FINISH DETAIL**  
SCALE: 1" = 1'-0"



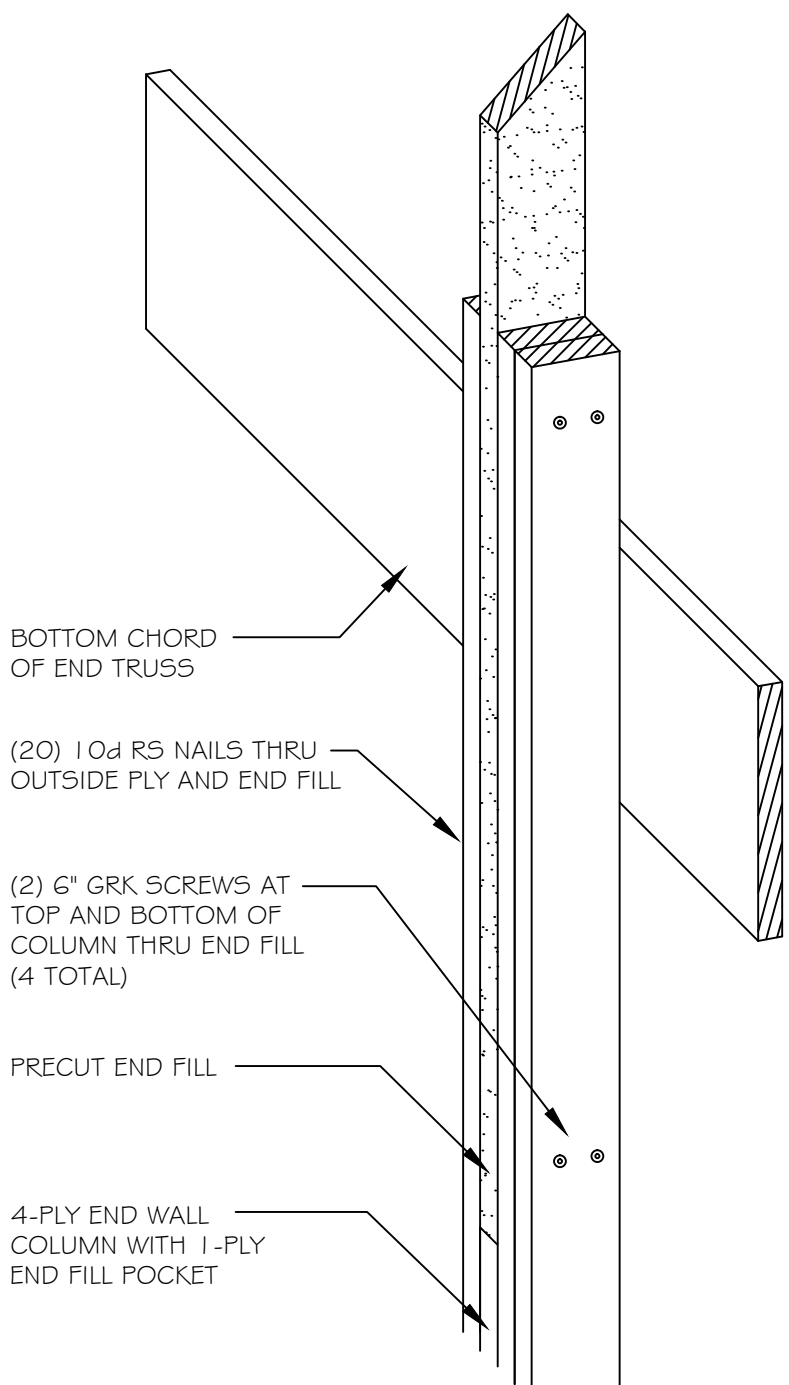
**RAKE FINISH DETAIL**  
SCALE: 1" = 1'-0"



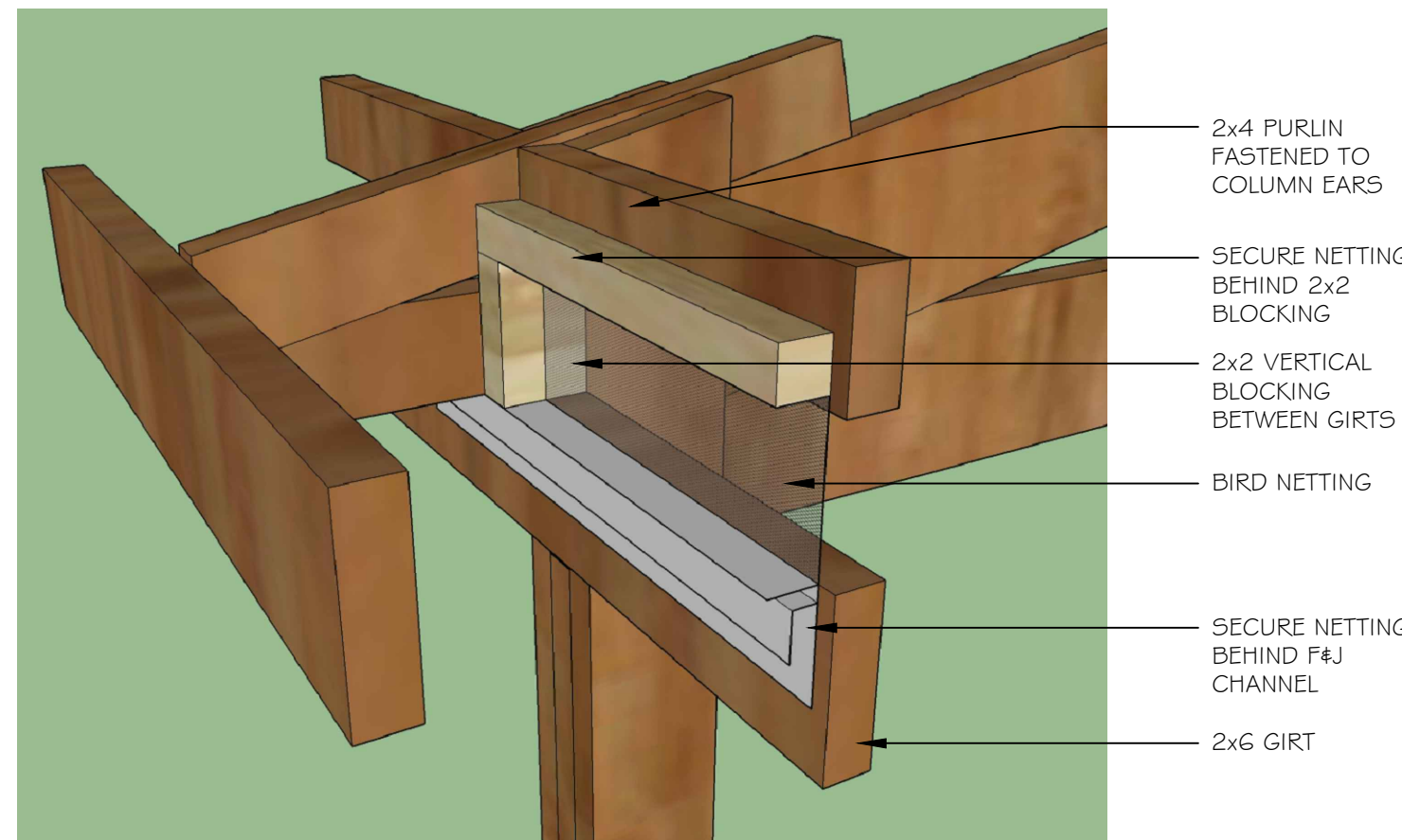
**GIRT TO COLUMN CONNECTION**  
SCALE: 1" = 1'-0"



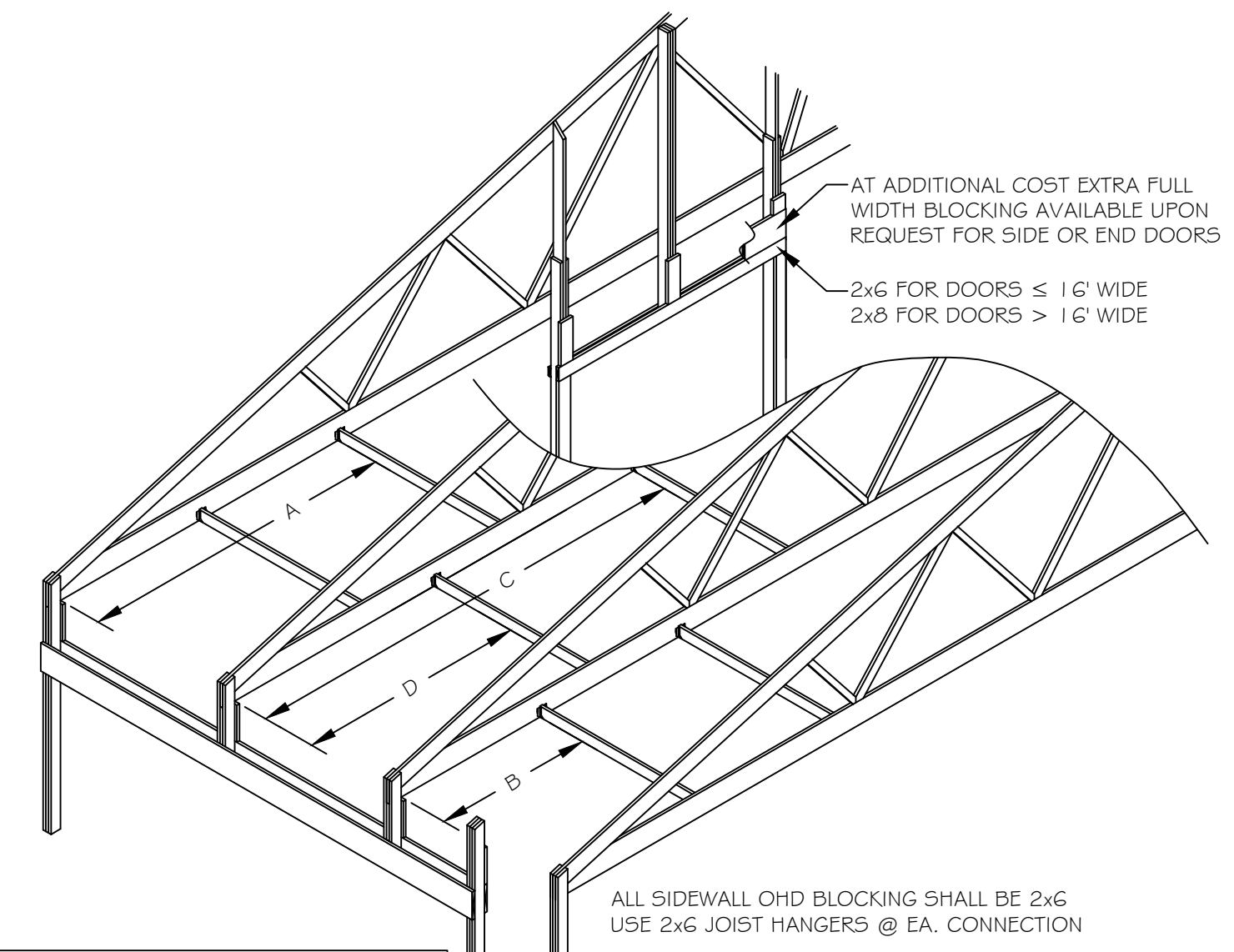
**GRADE BOARD TO COLUMN CONNECTION**  
SCALE: 1" = 1'-0"



**4-PLY COLUMN END FILL**  
SCALE: 1" = 1'-0"

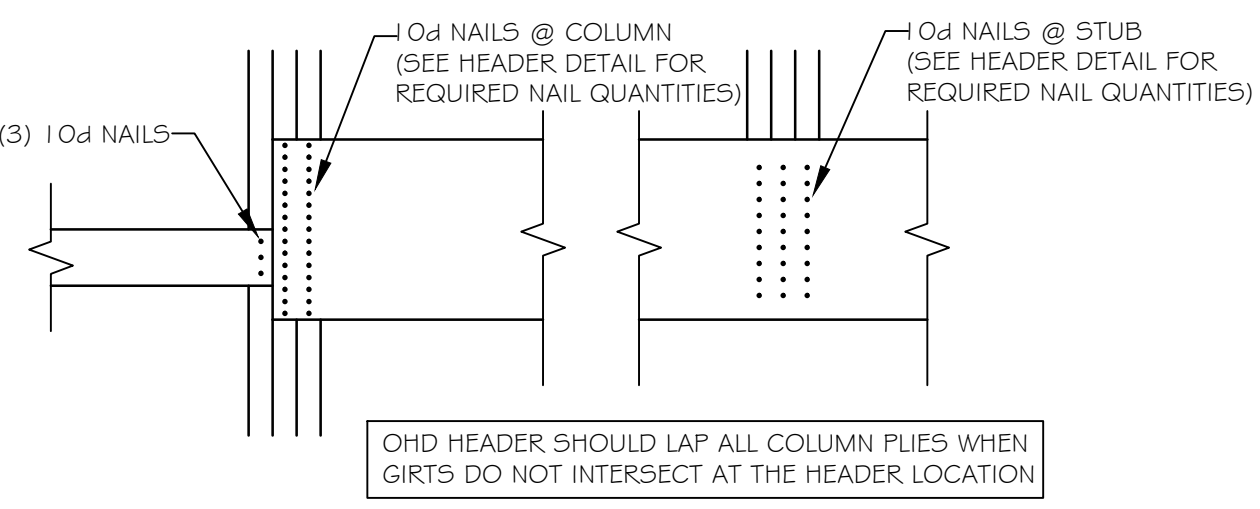


**BIRD MESH DETAIL**  
SCALE: N.T.S.

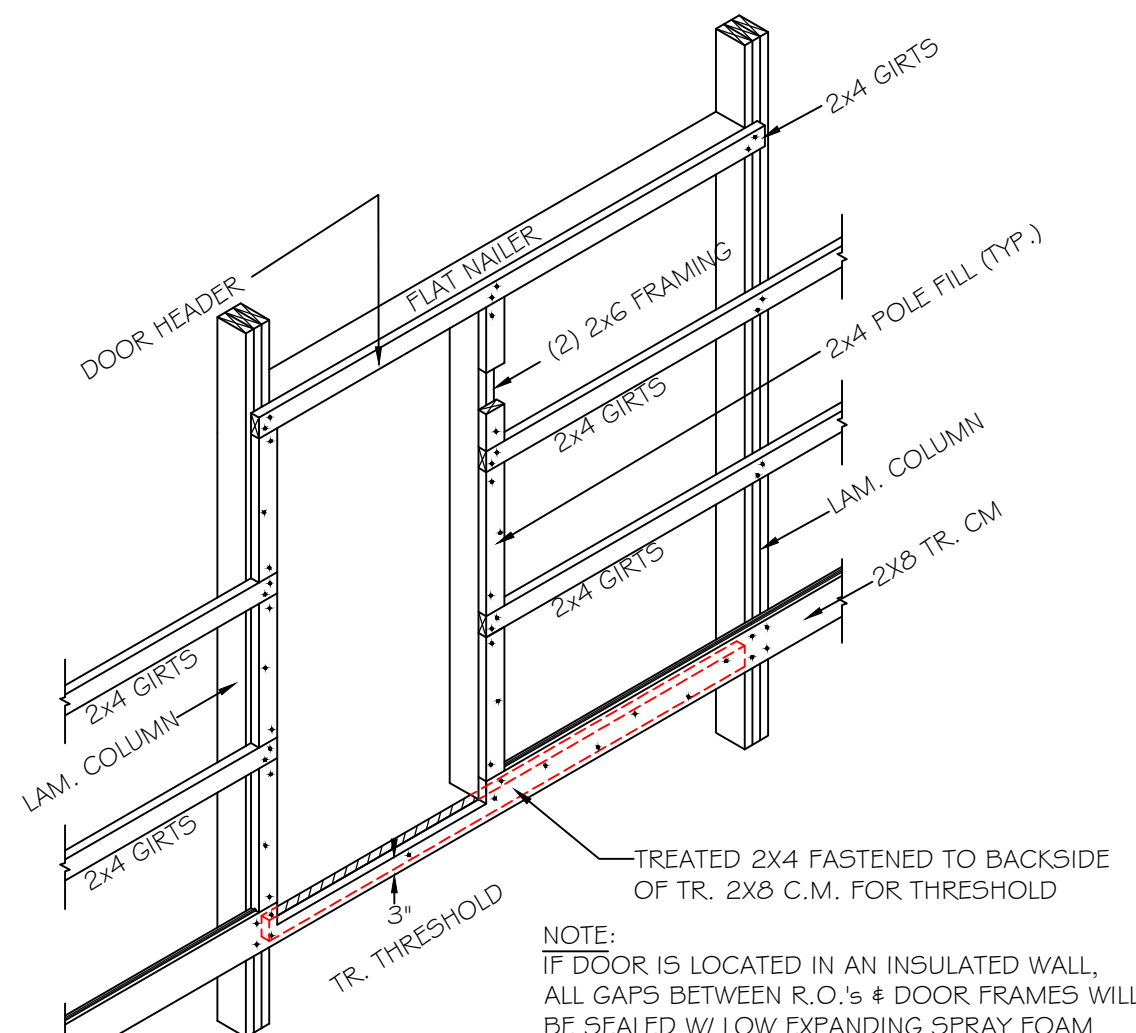


CREW NOTE: STANDARD OHD BLOCKING TO BE INSTALLED UNLESS INFORMED OTHERWISE BY THE PURCHASER

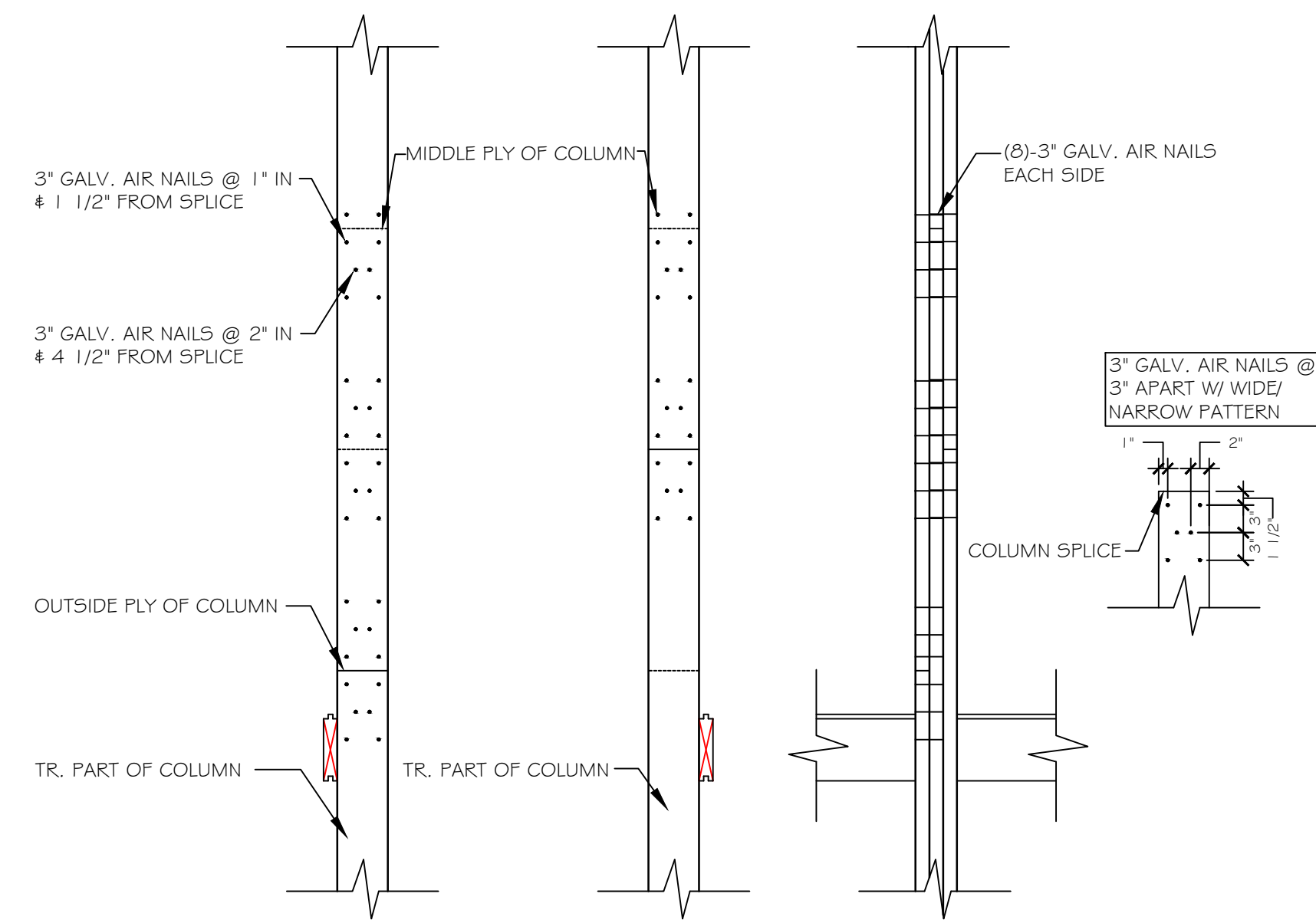
**TYPICAL OHD BLOCKING DETAIL**  
(TYPICAL 24" HEADROOM TRACK ONLY)  
SCALE: N.T.S.



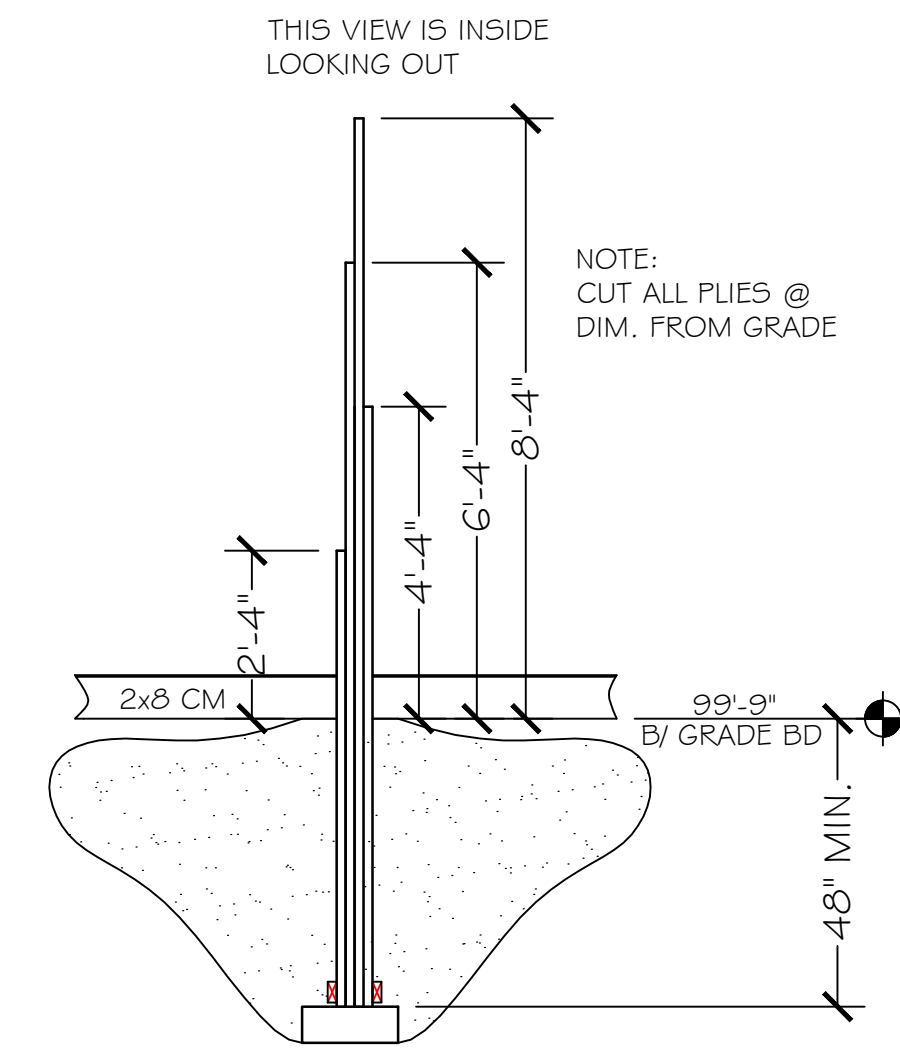
**WOOD HEADER FASTENER PATTERN AT DOOR OPENING**  
SCALE: 1" = 1'-0"



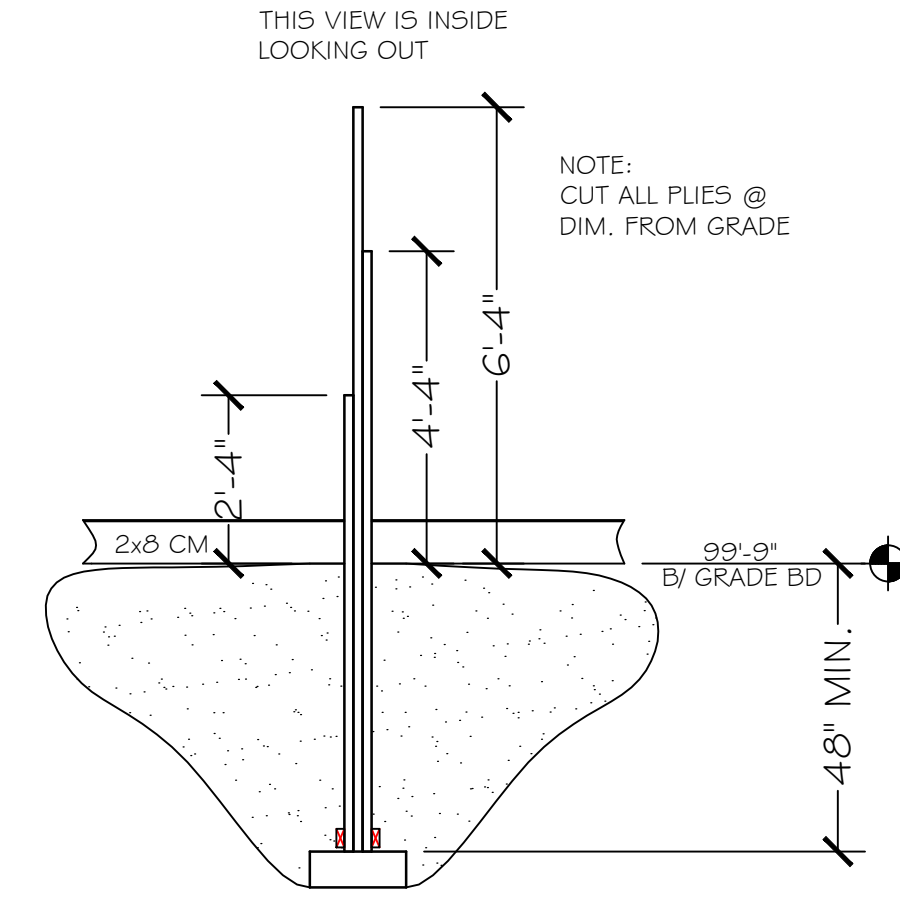
**WALK DOOR FRAME OUT DETAIL**  
SCALE: N.T.S.



**(TIP-UP) NAIL PATTERN**  
SCALE: 1" = 1'-0"



**4-PLY TILT-UP STUB DETAIL**  
SCALE: 3/8" = 1'-0"



**3-PLY TILT-UP STUB DETAIL**  
SCALE: 3/8" = 1'-0"

NO.	DATE	BY	DESCRIPTION

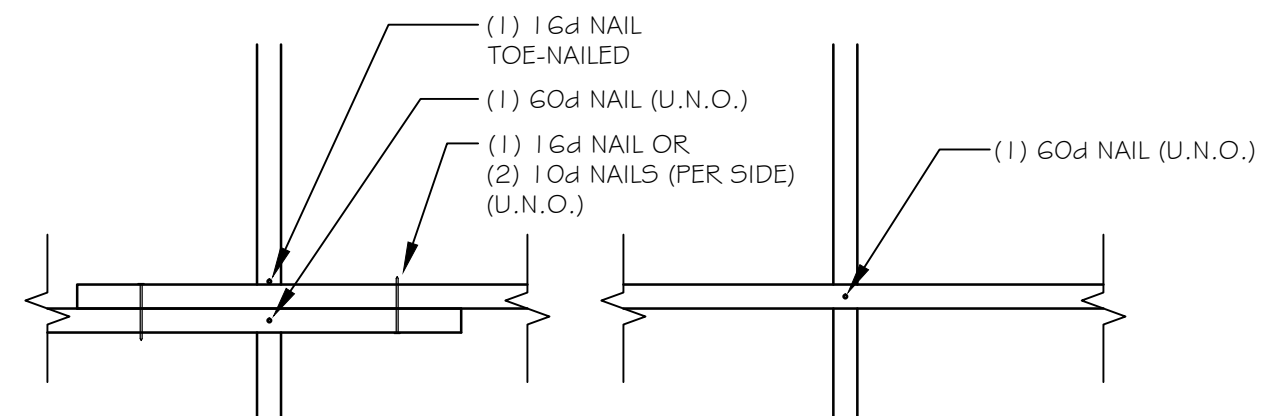
SEAL

**Hop Head Farms - Picker Building**  
6090 Napier Rd.  
Benton Harbor, MI 49023

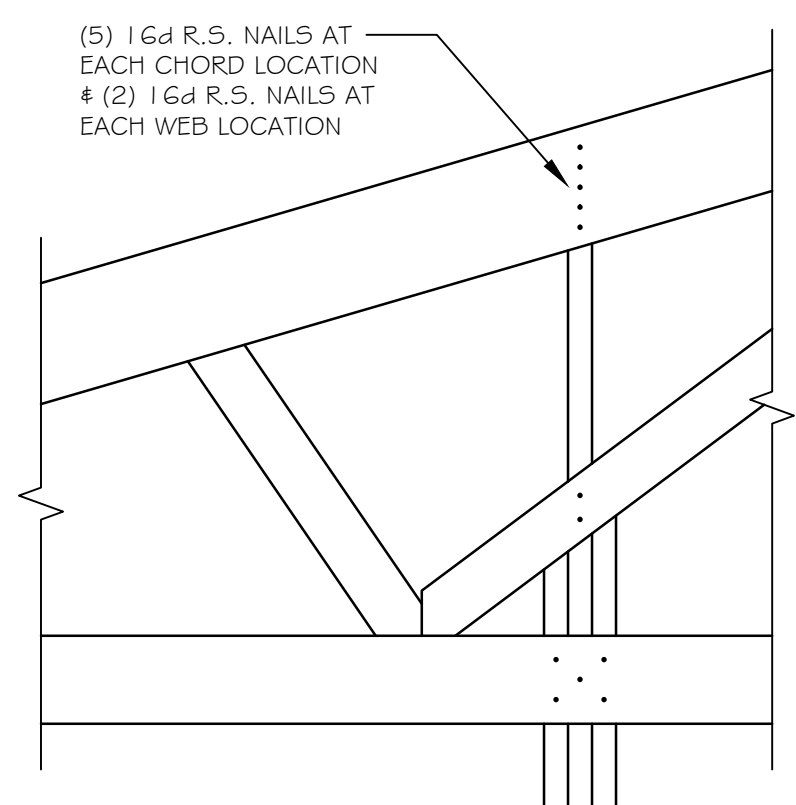
SHEET TITLE: MISC DETAIL

**FBI Buildings**  
fbbuildings.com • (800) 552-2981

DRAWN BY: BILL B  
MTO BY: XX  
PSC: KEN KOSINSKI  
SHEET: **A-501**  
FBI PROJECT #: 125320



**PURLIN CONNECTION DETAILS**  
SCALE: 1" = 1'-0"



**END TRUSS TO COLUMN CONNECTION**  
SCALE: 1" = 1'-0"

(125320-Hop Head Farms - Benton Harbor - Picker Bldg - \*\* - T1)  
Top chord 2x10 SP 2400r-2.0E  
Bot chord 2x8 SP SS-138  
Webs 2x4 SP #1-138 -W1, W7 2x4 SP #2-138:  
:W3, W5 2x8 SP SS-138:

Lumber grades designated with "138" use design values approved 1/30/2013 by ALSC

(\*\*) 2 plates designated with "138" use design values approved 1/30/2013 by ALSC

Lumber grades designated with "138" use design values approved 1/30/2013 by ALSC

Calculated horizontal deflection is 0.54" due to live load and 0.15" due to dead load.

Deflection meets L/240 live and L/240 total load.

Calculated vertical deflection is 1.23" due to live load and 0.33" due to dead load at X = 30'-0".

**WARNING:** Furnish a copy of this **DWG** to the installation contractor. Special care must be taken during handling, shipping and installation of trusses. See **"WARNING"** note below.

**2 COMPLETE TRUSSES REQUIRED**

Nail Schedule: 0.128"x3" min. nails  
Top Chord: 1 Row @ 5.75" o.c.  
Bot Chord: 1 Row @ 12.00" o.c.  
Webs: 1 Row @ 4" o.c.  
Use equal spacing between rows and stagger nails in each row to avoid splitting.  
4" o.c. spacing of nails perpendicular and parallel to grain required in area over bearings greater than 4"

Truss designed for unbalanced snow load based on Pg=50.00 psf. Ct=1.20, Ce=0.90, CAT 1 & Pf=30.24 psf.

In lieu of structural panels or rigid ceiling use purlins to brace TC @ 24" OC, BC @ 120" OC.

Trusses to be spaced at 96.0" OC maximum.

PLT TYP. 18 Gauge SS. WAVE  
Design Grit: CUSTOM/TPI-2002(STD)  
ET (R/S-TOR(CK)/S(O))  
Scale = 1/32" = 1'-0"

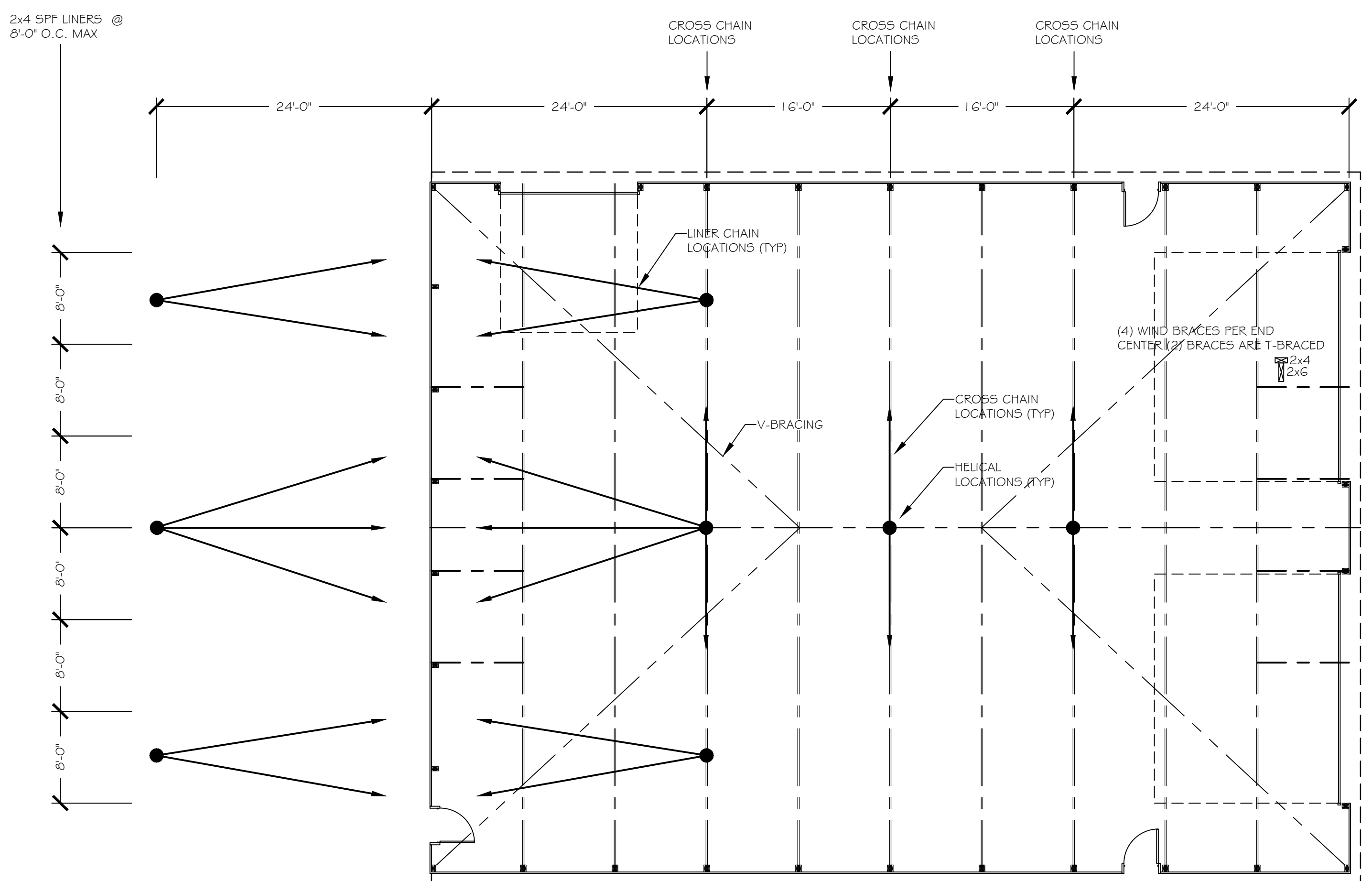
TC LL	29.0 PSF	REF	R7069-37781
TC DL	4.0 PSF	DATE	06/02/16
BC DL	4.0 PSF	DRW	MHS87069 16154003
BC LL	0.0 PSF	MO-ENG	BAF/BAF
TOT. LD.	37.0 PSF	SEQN-	40243
DUR. FAC.	1.15	FROM	MLH
SPACING	96.0"	JREF-	1VR7069Z03

**TRUSS DRAWING**  
SCALE: N.T.S.

**TRUSS HANGING AND BRACING GENERAL NOTES**

1. THE FBI TRUSS HANGING AND BRACING MANUAL (HEREAFTER CALLED "BRACING MANUAL") LATEST EDITION SHALL BE USED IN CONJUNCTION WITH THE DETAILS ON THIS BRACING PLAN.
2. OPERATORS MUST BE FAMILIAR WITH THEIR EQUIPMENT AND TRUSS HANGING PROCEDURES FOUND IN THE BRACING MANUAL.
3. BUILDING MUST BE TEMPORARILY BRACED IN ACCORDANCE WITH THE BRACING MANUAL PRIOR TO ERECTION OF ANY TRUSSES.
4. CONNECTIONS OF ALL TYPES MUST MEET OR EXCEED THAT WHICH IS FOUND IN THE BRACING MANUAL OR THIS BRACING PLAN.
5. SPECIFIC DETAILS ON CHAINING AND BRACING SYSTEMS SPECIFIED ON THIS BRACING PLAN MUST BE FOLLOWED PER THE BRACING MANUAL.
6. ANY UNFORESEEN OR CHANGING CIRCUMSTANCES SHOULD BE ADDRESSED WITH ENGINEER AND/OR CREW MANAGER.

IT IS ACCEPTABLE TO HANG (9) TRUSSES BEFORE PURLINS AND V-BRACES MUST BE INSTALLED ON THAT SECTION OF THE ROOF.



**BRACING PLAN**  
SCALE: 1/8" = 1'-0"

NO.	DATE	BY	DESCRIPTION

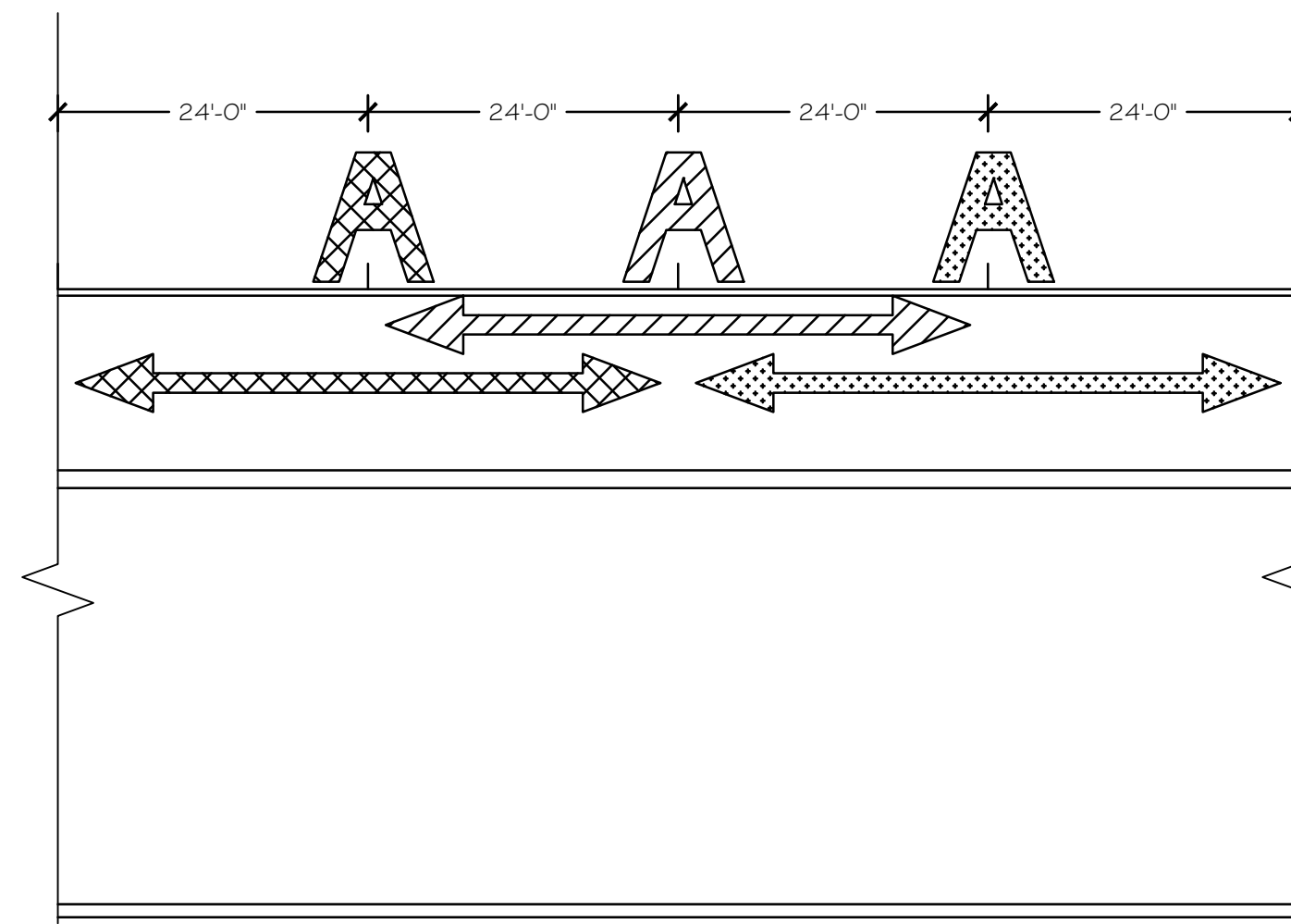
SEAL

**Hop Head Farms - Picker Building**  
6090 Napier Rd.  
Benton Harbor, MI 49023

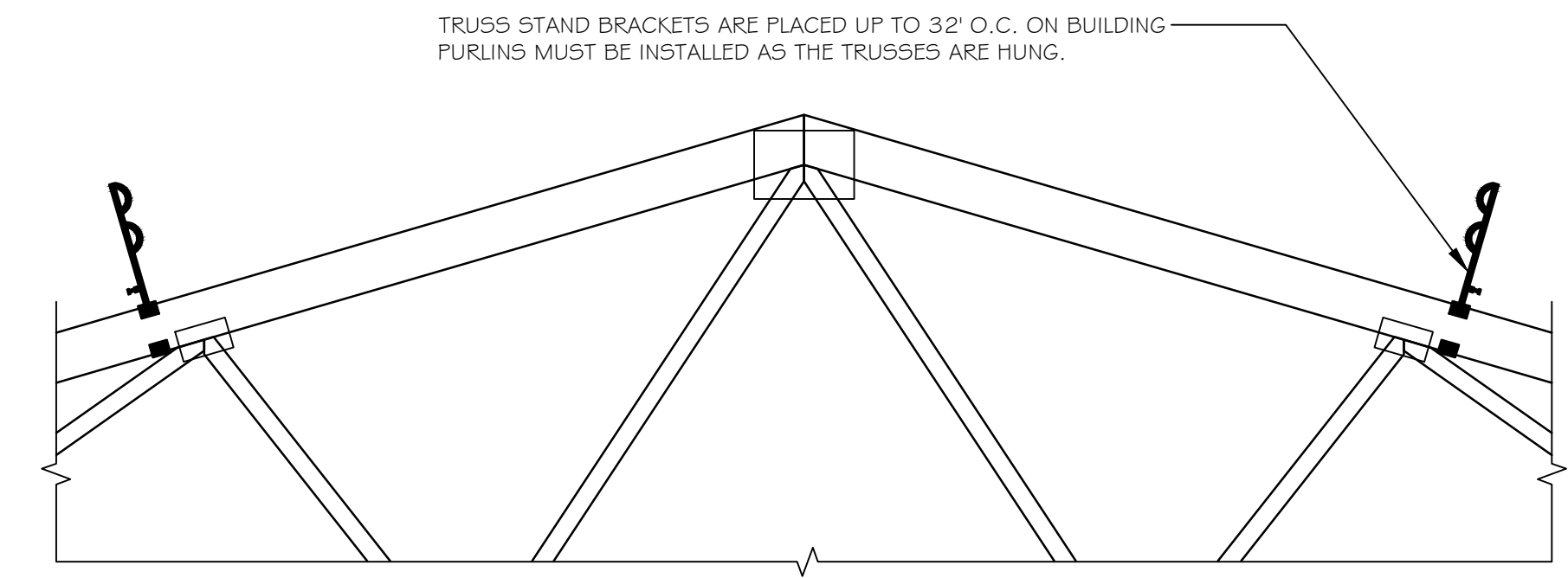
SHEET TITLE:  
BRACING PLAN

**FBI Buildings**  
fbibuildings.com • (800) 552-2981

DRAWN BY:	BILL B
MTO BY:	XX
PSC:	KEN KOSINSKI
SHEET:	B-101
FBI PROJECT #:	125320



**SWING FACTOR DIAGRAM FOR HORIZONTAL TRAVEL DISTANCE**  
SCALE: N.T.S.



TRUSS STAND BRACKETS ARE PLACED UP TO 32' O.C. ON BUILDING PURLINS MUST BE INSTALLED AS THE TRUSSES ARE HUNG.

**TRUSS STAND BRACKET LOCATION**  
SCALE: N.T.S.

INTERIOR CLEARANCE	DISTANCE FROM EAVE STRAIGHT UP TO THE ANCHOR POINT ON THE SKI												
	10	12.5	15	17.5	20	22.5	25	27.5	30	32.5	35		
8	5	5	6	6	7	7	7	8	8	8	9		
10	8	9	10	11	12	12	13	13	14	15	15		
12	11	12	13	14	15	16	17	18	18	19	20		
14	14	15	16	17	18	19	20	21	22	23	24		
16	16	18	19	20	21	22	23	24	25	26	27		
18	19	20	22	23	24	25	26	27	28	29	30		
20	21	23	24	25	27	28	29	30	31	32	33		
22	23	25	26	28	29	30	32	33	34	35	36		
24	25	27	29	30	32	33	34	36	37	38	39		

ROOF SKIS SHOULD ONLY BE CONSIDERED ON MULTIPLE PIECE ROOFING APPLICATION

**ANCHOR POINTS LOCATION FROM EAVE AND ALLOWABLE HORIZONTAL TRAVEL**



**SIDE WALL ANCHOR POINT HEIGHT/ HORIZONTAL TRAVEL DISTANCE**  
SCALE: N.T.S.

NO.	DATE	BY	DESCRIPTION
	06/01/16	Ken L. Kosinski	Construction Set
	06/01/16	Bill B.	PERMIT SET

SEAL

**Hop Head Farms - Picker Building**

6090 Napier Rd.  
Benton Harbor, MI 49023

SHEET TITLE:  
MISC DETAIL

**FBI Buildings**  
fbbuildings.com • (800) 552-2981

DRAWN BY:	BILL B
MTD BY:	XX
PSC:	KEN KOSINSKI
SHEET:	
<b>FBI</b>	
FBI PROJECT #:	125320