

LOT FOR SALE

*Platteville, Wisconsin
• Grant County •*

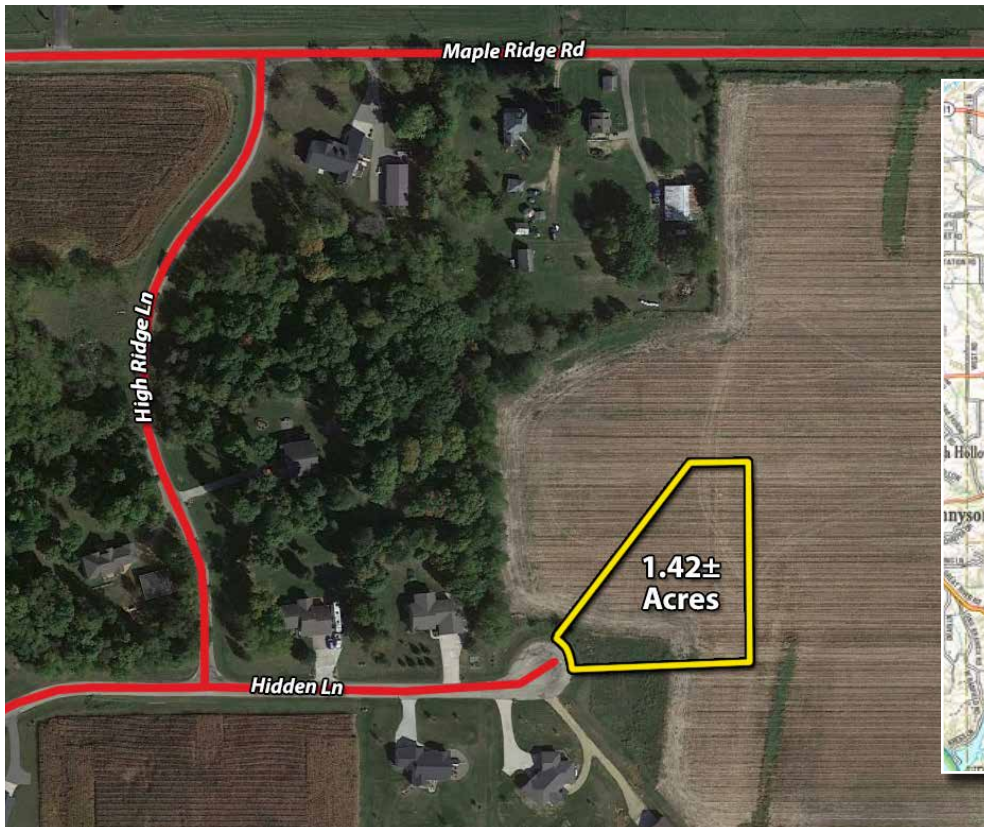
1.42± Acres

PRICE:
\$78,900

- 1.7 Miles from Highway 151
- 6 Minutes from Platteville
- 19 Minutes to Dubuque
- 1.7 Miles to Biking/Walking Trail

LOT 12

Just outside of Platteville at the end of a quiet cul-de-sac you will find this 1.42± deeded acre lot waiting for that perfect home. The lot sits on Hidden Lane which perfectly describes the location of this isolated neighborhood while at the same time giving the feel of country living. The location offers quick and easy access to Highway 151 making traveling to Platteville, Dubuque or Madison a cinch.



Parcel # 050-00900-0117



The information on this sheet is subject to verification and no liability for errors or omissions is assumed by the Schrader Agency.

LAZARUS - CH07G-WI

SCHRADER
Real Estate and Auction Company, Inc.

800-451-2709
schraderauction.com/listings

Listing Agent:
CHRIS HOFFMAN
608-885-0005 • chris@schraderauction.com