

Whitley County, IN

ONLINE ONLY - PERSONAL PROPERTY



Auction

Lots Start Closing: Thursday, June 11th @ 6pm

Preview: Thursday, June 11th • 2pm-4pm

Location: 4310 E SR 205, Columbia City, IN 46725.

Directions: From the Intersection of US 30 & SR 205: take SR 205 North approximately 3.5 miles, property on East (Right) side of road.

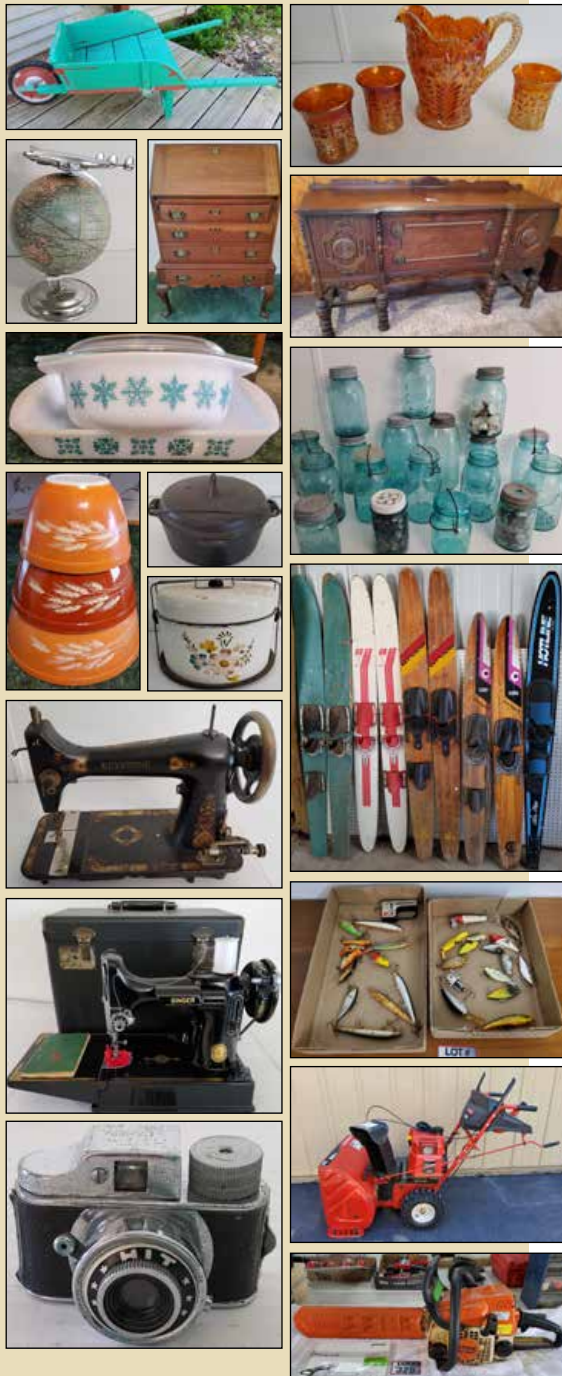
ANTIQUES/HOUSEHOLD/ COLLECTIBLES

- Antique Wood Wheelbarrow • Weber Costello Co. Airplane Globe • Glass & Galvanized Chicken Waterers • Antique Compact, Brooches, Hair Comb • **Glassware:** Vaseline, St. Clair Carnival Pear Paperweight, Carnival, Pressed/Cut Glass • Lynn's, Noritake, Japanese Tea Sets • Buck 703 Pocket Knife • Lane Cedar Jewelry Chest • **Cameras:** HIT Mini Spy Camera w/Leather Case, Polaroids, Sony DSC-HX1 & Olympus Super Zoom 330 • **Cast Iron:** Dutch Oven w/Lid, Lodge US 909, 10 1/2" Skillets, Dachshund Stand & 2 Stainless Bowls, Lodge No. 5 8 1/8" Skillet w/Lid • **Sewing Machines:** Keystone, Singer Model 221-1 Portable Electric, Singer Pro Finish Model 14CG754, Singer Professional 14U12 & Singer Treadle Sewing Machine • Insulators • McCoy Cream & Sugar Set • Crock Bowls • Anchor Hocking 3PC Honey Gold Chip Dip • 2 Pc. Pedestal Glass Punch Bowl • Anchor Hocking/Fire King Wheat Pattern 8" & 1 1/2 QT Baking Dishes • Porcelain/Enamel Coffee Pot, Bowl, Colander & Refrigerator Dish • 4PC Vintage Cheinco Canister Set • 3PC Pyrex Autumn Harvest Nesting Bowls • Glasbake 2 1/2 QT Casserole & Pyrex 1 1/2 QT Snowflake Covered Baking Dishes • Corningware Blue Cornflower, Floral Bouquet, Cherry & Spice of Life Baking Dishes • Vintage Tupperware • Marbles • Oil Lamps • Mantle Clock • Blue/Clear Canning Jars • Universal No. 2 Chopper • Aviation/Military & Misc. Books • Die cast Cars & Trucks • First-Alert Safe • GE Microwave • Zero

- Zone, Walls & Northeast Outfitters Coveralls • W. Zeller Southwestern Oil Painting • Office Supplies • HP Printers • LA-Z-BOY Recliner • Taylor Jamestown Cherry Secretary • Oak Claw Foot Glass Front Lighted Curio • Oak File Cabinets • Roll Top Desk & Chair • Kling Colonial Kitchen Table & 4 Spindle Back Chairs • Cedar Chest • Oak Glider • Antique Sideboard Buffet • Kenmore Chest Freezer • **Fishing:** Poles, Lures, Tackle Boxes, J. Marttiini Finland, American Angler Fillet Knives, Lowrance Depth Finder • **Auto Repair Manuals:** Chilton's, Ford, Chevy, VW & Misc. • **Records:** Johnny Cash, Willie Nelson, Loretta Lynn & Misc. • Crosley Record Player • Lionel Train Set & Accessories • Christmas, Halloween, Fall, Easter Decorations • **Blow Molds:** Ghost, Easter Bunnies, Santa & Snowman • TJ Rampit Convalescent Ramp • Roadmaster Wagon

SHOP/LAWN & GARDEN

- Husky 200 PSI Upright Air Compressor • Craftsman Roll Around Tool Box • Craftsman Socket Sets, Wrenches, Ratchets S&K Wrenches • Snap-On 1/2" Drive Impact Socket Set • Pipe Wrenches • 2-Ton Hydraulic Jack • Mack 2 1/2 Ton Hydraulic Quick-Lift • Larin 2-Ton & 3-Ton Jack Stands • Sears 3-Ton Hydraulic Jack • Haier Mini Fridge • Power Puller, Chain Binder, Ratchet Straps, Bungee Cords • Bench Grinder on Stand • Antique American Grinder Mfg. Co Hand Crank Bench Grinder/Sharpener • Step Ladders, Werner 8' Fiberglass, 6' Wood, Extension Ladders • Coolers • Splitting Maul & Wedge • Yard Tools • Organizers • Pullman Metal



AUCTIONEERS NOTE: A Quality Auction That Warrants Your Attention, Don't Miss This Opportunity to Bid on Vehicles, Camper, Golf Cart, Shed, Shop/Lawn & Garden, Sporting, Antiques, Collectibles, Household & More!

Seller(s): Beverly Bennett | Auction Manager: Phil Wolfe, 260-248-1191

800-451-2709 | SchraderAuction.com | equipment.schraderauction.com

AU19900139, AC63001504



Whitley County, IN

ONLINE ONLY - PERSONAL PROPERTY



Auction

Lots Start Closing: Thursday, June 11th @ 6pm

Industrial Step Stool • Campbell Hausfeld/Snap-On Air Impact Wrenches & Ratchet • Wood/Metal Ramps • 2-Wheel Dolly • Portable Sprinkler Set • **Water Ski's:** Go Go Lake Region, Water Bee Cut'N Jump, Cypress Gardens Dick Pope III, Hotline Ultra Class Kidder Slalom & Ski Ropes • Reese Receiver w/Out-fitter Bike Rack • T-Posts, Garden Stakes • Mr. B-Q Grill Portable Gas Grill & Tank • Coleman Stove • Aero-Motive Cable Reel • Diehard Battery Charger/Engine Starter • Craftsman Bench Vise • Truck Club Steering Wheel & Universal Wheel Locks • 16 Gallon Heavy Duty Shop-Vac • Lawn Chairs • Wheelbarrow • Fuel Cans • Garden Hoses • Campbell Hausfeld 5 Gallon Portable Air Tank • Reddy Heater • Workmate 225 Folding Workbench • R&R Mfg. Concrete Base Mailbox • Green Metal Glider • Round Patio Table & 4 Chairs • Shepherds Hooks • Kendall Gear Lube Advertising Drum • Antique Plow/Cultivator

GMC SIERRA TRUCK/FORD EDGE/KEYSTONE CAMPER

• **2006 GMC Sierra SLE 2500 HD Truck**, shows 184,995, 4 Door Cab; Crew, 4WD, V8, 6.6L; Turbo, Diesel, VIN #: 1gthk23d96f184321, Indiana Title & Bill of Sale • **2018 Ford Edge SEL**, shows 68,137, 4 Door Wagon, FWD, L4, 2.0L; Turbo; EcoBoost, Gas, VIN #: 2FMPK3J91JBC01490, Indiana Title & Bill of Sale, Stored Inside • **2022 Keystone Bullet Crossfire Camper**, Model BL1850RB22, 22', 1 Slide Out, Awning, GE AC, LCI Electric Tongue Jack, PSx1 Power Stabilizer Jacks, sleeps 4, Solar Power, Walkable Roof, w/Accessories Carpet, Sewer Related, Cords, Hose, VIN # 4YDTBLH11NT435246, 1 Owner, Used Locally Approximately 6 Times, Indiana Title & Bill of Sale • **RV SUPPLIES:** Tote Along Grey Wa-

ter Tank, Lynx RV Levelers, RV/220V Power Cords, Connectors & More

JD GARDEN TRACTOR/TORO ZERO TURN/HONDA 50 MOPED/CLUB GOLF CART

• **JD GX 345 Garden Tractor**, Hyd. Drive, shows 853 Hrs, 20 hp Liquid Cooled V-Twin Motor, S/N M0G345E123031, w/54" Mower Deck, JD 42" Snowblower, Chains, JD 48" Push Blade, Extra Belts, Filters Oil, Manuals, Running Condition, All Stored Inside • **Toro Timecutter Zero Turn Mower**, Mfg. 06-22, 50" Deck, My Ride Suspension System, Commercial V-Twin 24.5hp Motor, 2 Spare Front Tires/Rims, Running/Mowing Condition, Stored Inside • **Honda 50 Moped**, Parts/Restoration, Motor Free, shows 3624 Miles, C100-N012075, Stored Inside • **Club Car Golf Cart**, w/Veevor Battery System Upgrade, 51-2V 105AN, Rear Seat, Lights, New Cover, Direct 110 Plug in For Charging, Working Condition, Stored Inside

PUSH MOWERS/TILLERS/GENERATORS/SNOWBLOWER/LAWN & GARDEN

• Generac Power Boss 4500 Generator • Honda EU2200i Inverter • Troy-Bilt Storm 7524 Self-Propelled Snowblower • Agri-Fab 10 Cu. Ft. Lawn Trailer • Quality Farm & Fleet 14 Gallon Pull Behind Sprayer • Stihl MS 180C Mini Boss Chainsaw • Toro Self-Propelled Push Mower • Huskee 21" Self-Propelled Push Mower • Scotts Deluxe Garden Seeder • Worx 20V Battery Operated Weed-eater • Stihl FS 45 Weed-eater • Montgomery Wards Front Tine Tiller • Stihl MM 55C Tiller • Craftsman 27cc Blower/Vac • Devilbiss 1400 PSI Power Washer

SHED

• **Tan & Green Wood Shed** w/Shingled Roof, 10' x 10' x 10', Buyer Responsible for Removal



ONLINE PAYMENT: Payments may be made Online in the form of Credit Card (3% CC Surcharge Applies), **Friday, June 12th & Saturday, June 13th** or by Calling our Main Office @ 260-244-7606 @ Normal Business Hours, **Friday June 12th 8am-5pm or Saturday June 13th 8am-12 Noon.** (Office Closes at Noon Saturday, EST)

ONSITE PAYMENTS: **Friday, June 12th • 2pm-6pm & Saturday, June 13th • 9am-12 Noon.** Cash, Check or Credit Card (3% CC Surcharge Applies). **ALL Payments to be Made by Saturday, June 13th • 12 Noon. NO EXCEPTIONS!!**

10% Buyers Premium Applies

LOAD OUT: 2 Day Load Out!! Friday, June 12th • 2pm-6pm & Satur-

day, June 13th • 9am-12 Noon! Bring Help.

NOTE: Plan accordingly, Staff is Limited / Come Prepared / Auction Company does not provide Boxes, Packing, Hand Trucks or provide staff for loading. Staff will not be responsible for loading Buyers Items. Come Prepared!

SHIPPING: Shipping is available through 3rd Party Shipper, Columbia City Goin Postal, 1080 Spartan Drive Suite A, Columbia City, IN, 46725. 260-248-8608 Call for Quote Prior to Bidding. *ALL Shipping & Handling costs are the responsibility of the Buyer & Goin Postal, Not the Auction Company.*

800-451-2709 | SchraderAuction.com | equipment.schraderauction.com

