

STEUBEN COUNTY, IN

Lots Start Closing:

Thursday, June 18th • 6pm

PREVIEW:

THURSDAY, JUNE 18TH • 10AM-12 NOON

Location: 1350 E 300 N, Fremont, IN 46737

Directions: From the intersection of N SR 827 & E 300 N, Fremont, IN: Take E 300 N East approximately .1 mile, property on North (left) side of road.



Online Only

AUCTION

PERSONAL PROPERTY

ANTIQUES/HOUSEHOLD COLLECTIBLES

- **Native American** Arrowheads • **Vintage Diamond Wizard** Turnbuckle Display • **Vintage Dinnerware Sets:** Taylor Smith 2501 Moss Rose, Style House Fine China Platinum Ring & National China • **Costume Jewelry, Women's Watches:** Bulova, Gruen Precision, Seiko, Elgin, Watches Fobs: 12K Gold Filled & Illinois, Sterling/German Silver, 10K & 14K Women's Rings • **Oil Lamps:** P&A Mfg. Finger Lamp, P&A Mfg. Green Base/Milkglass Hobnail Shade, P&A Mfg. Cut Glass, Aladdin Corinthian Pink Oil Lamp • **1907 Pan-American Letter Opener** • **Ofuna 3X10 Theatre/Opera** Binoculars • **Community & EPIC Silverplate** Silverware Sets • **Antique Victor Talking Machine** Model VV-VIII 125103, Colonial Phonograph & Atwater Model H Radio & Horn • **Gilbert Gingerbread Mantle** Clocks • **Medio-Fino Violins** • **Antique Wicker** Doll Carriage/Stroller • **Wedding Ring** & Patchwork Quilts • **Antique Spinning Wheel** • **Antique Oak Doll** Dresser • **Antique Croquet Set** • **1950's Yankee Clipper Sled** Model F024 • **Milk Can** • **Oxen Yolk** • **Radio Controlled Golden Arrow** Buggy • **Moor Man's Livestock Equipment** Division Bracket • **1885 History of Steuben County, Indiana** Book • **10" & 11 3/4" Wagner's 1891 Cast Iron** Skillets & Cast Iron #8 Dutch Oven • **No. 1 Cast Dinner Bell** • **Chef Trade Mark Berdan Co.** & Queen Wide Mouth Quart Jars • **Toothpick Holders, Salt & Pepper Shakers** • ***NEW* 4 QT Elite Gourmet Ice Cream Maker** • **Floor Lamp** • **Lane Cedar** Chests • **Soundesign Model 4454B Stereo** Receiver, Record Player & Speakers • **Vintage Cameras:** Minol-

ta 7000, Canon Sure Shot, Polaroid Automatic 320, Vintage Petri 7 S • **Willow Tree & Snow White/Seven Dwarfs** Figurines • **Replugle World Globe** • **1940's-1970's Key**, Vistula, Bittersweet Yearbooks • **Carnival/Marigold Footed Bowl** • **Brass Cannon's** • **Glass Rolling Pins** • **Vera Bradley** Purses • **Corningware Blue Cornflower** & Spice of Life Baking Dishes • **Metal Folding Chairs** • **Antique/Modern Furniture:** Roll Top Desk & Chair, Antique Side Table w/Casters, Oak Drop Leaf Table, Antique 3PC Victorian Style Loveseat & Chairs, Antique Platform Rocker/Glider, Antique Empire Dresser, Sligh Furniture Kidney Shaped Desk, Oak VHS Cabinet, Coffee Table, Child's Chair & High Chair, Modern 4 Door Glass Front Bookcases, Vintage Accordion Sewing Box • **Records:** Elvis, Johnny Cash, Hank Williams, Doris Day, Bill Cosby, Cat Stevens & More

COINS

- **2003 1 Oz. .999 Silver** Coin • **Sterling Silver Postmaster** Coin • **(2) 1925 & 1936 Buffalo Nickels** & (1) 1887 Indian Head Penny • **(2) Golden Buffalo Nickels** • **Copper Coins:** Walking Liberty, Incuse Indian, Zoo & Misc. • **Ike Dollar** & Kennedy Halves • **Oversized 1913 V Nickel** Copy • **2018, 2019, 2020 Uncirculated Quarters** • **Foreign Coins** & Currency • **1938 Jefferson** Nickels • **National Park Quarters** • **2009 Veterans Day** Commemorative Coins

PISTOL/LONG RIFLES/AMMO

- **Ruger .22 LR Automatic Pistol**, 1 Mag. w/ Leather Holster, S/N 404657 • **Wards Westernfield Model 35 .16 Ga.** Pump, S/N U94903 • **Stevens Mod 15-A .22, .22 S, L or LR, Bolt Ac-**

tion, Single Shot, S/N Unknown • **Springfield Mod 944 Series A .12 Ga.**, Single Shot, S/N P757083 • **Ruger 10/22 Carbine**, .22 LR, w/Tasco 3-7x20 Scope, 1 Mag. S/N 132585 • **Coast to Coast Master-Mag Mod. CC660 .410 Pump**, 2 3/4"/13" Shells, 26" Barrel, S/N 6702526 • **Remington Fieldmaster Mod 572 .22 Pump**, .22 S, L & LR, S/N Unknown • **Winchester Mod 37 .16 Ga.**, 2 3/4 Shells, Single Shot, S/N Unknown • **Remington 9mm, .357 Magnum** Lugar Cartridges & 12 Ga. Shotgun Shells • **Winchester & Remington .22 Golden Bullet** Value Pack • **Remington .410 Shotgun** Shells • **Weaver V22 Scope** & Rings

SHOP/LAWN & GARDEN

- **Central Machinery 5 Spd Tabletop Drill Press** • **Atlas Lathe** • **Lincoln AC 225 Amp Arc Welder** & Rods • **Tradesman 8" Bench Grinder** on B & D Workmate • **Craftsman 10" Bench Saw** • **Torch Set** on Stand • **Campbell Hausfeld 1/2" Drive** Set • **Tekton Socket Set** • **Rockwood 3/4" Drive Socket/Wrench** Set • **6"-18" Pipe Wrenches** • **Black & Decker Air Impact Wrench** • **Craftsman, Powr-Kraft, Craftsman, Truecraft, Great Neck** & Misc. Adjustable Crescent/Wrenches • **Corded/Battery Operated Tools** • **3,000 LB Capacity Heavy Duty Mobile Crane** • **Cen-Tech Digital Photo Sensor Tachometer**



AUCTIONEER'S NOTE: A Great Opportunity to Bid on Tractors, Implements, Truck, Shop, Lawn & Garden, Antiques, Sporting Related, Collectibles, Household & More!

Seller(s): McCarthy
Auction Manager: Phil Wolfe,
260-248-1191 (AU19900139, AC63001504)

800-451-2709 | SchraderAuction.com | equipment.schraderauction.com

STEUBEN COUNTY, IN

Lots Start Closing:

Thursday, June 18th • 6pm

PREVIEW:

THURSDAY, JUNE 18TH • 10AM-12 NOON

Location: 1350 E 300 N, Fremont, IN 46737

Directions: From the intersection of N SR 827 & E 300 N, Fremont, IN: Take E 300 N East approximately .1 mile, property on North (left) side of road.

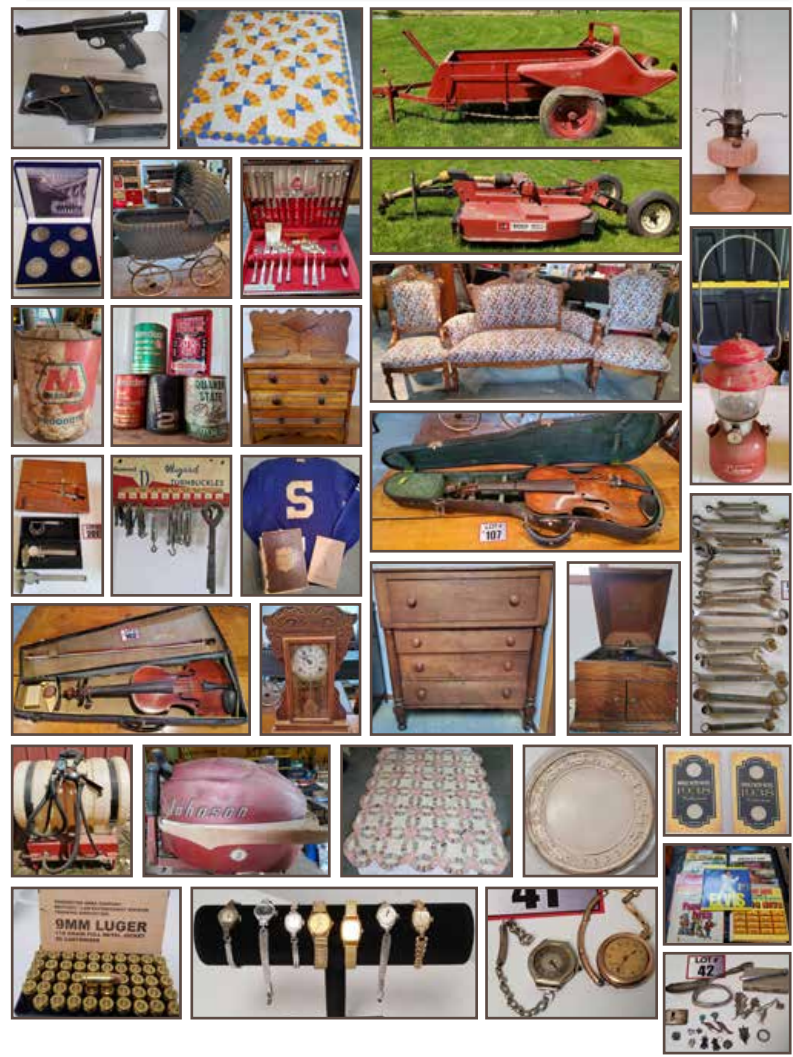
SHOP/LAWN & GARDEN - Continued

• Craftsman, Kennedy, Williams, Montgomery Ward Toolboxes • Pittsburgh 2-Ton Hydraulic Jack • MVP Floor Jack • MVP 3-Ton Jack Stands • Handy Jack Hi-Lift Model HL-485 • Starrett, Enco & Misc. Calipers/Micrometers • SunJoe Electric Pole Saw • Red 2-Wheel Dolly • Mobil, Quaker State, Valvoline, Polaris Oils • Traveller Gear/Transmission Oil/Fluid • Baler Twine • Patio Chairs • Coleman Lanterns • Wheel Horse Garden Tractor w/Snowblower, 48" Deck, Shows 1643 Hrs. Rear Weights • Kuker & Snyder 25 Gallon Pull Type Sprayers • Ironton 5 Gallon Sprayer • David Bradley 1 Bottom Garden Tractor Plow • 5' Seed Easy Pull Type Seeder • JD Pull Type Yard Thatcher • Agri-Fab Yard Cart • Ariens 4hp Tiller • Swisher T-40 Pull Type Mower • WinPower Pull Type Generator • Husqvarna 124C Weedeater • Vintage Johnson Seahorse 3 Boat Motor, Model JW 12 • Fishing: Minn Kota 35 Trolling Motor, Great Lakes, Zebco, Shakespeare, Daiwa & Misc. Fishing Reels, Basket, Jitterbug, Hula Popper, Heddon & Misc. Lures, Plano/My Buddy Tackle Boxes • Sears Model 529-261631 Garden Planter • Huffy Marker & Genesis Overkill Mountain Bikes • Razor Scooters & Skateboard • 11 Gallon Campbell Hausfeld Portable Air Tank • Electrical Cords • Red Wagon • Double Wash Stand • Craftsman Portable Craft Center • Wilton 5" Anvil Vise w/Welding Table • 125 Rapid Bench Vise • Fuel Cans • 3-Bay Lockers

TRACTORS/IMPLEMENTS

• 1955 Massey Ferguson TO35 Tractor, 3 Pt., Draw Bar, shows 5051 Hrs. Rear Weights, New 12V Battery 05-26, Newer Alternator, S/N 143603, Running Condition, Stored Inside
• 1944 IH Farmall M, NF, 149-38 Rears, 6.00-16 Fronts, Draw Bar/Hitch, Points Cleaned 05-26, S/N FBK-79890, Running Condition, Stored Inside
• 1962 IH 504, 3 Pt. 540 PTO, Drawbar Hitch, 1 Remote, shows 3456 Hrs. 13.6-28 Rears, 6.00-16 Fronts, 60" Loader Bucket, Rear Weights, New Battery 05-26, S/N 3294-J-FF, Stored Inside, Running Condition
• 1989 Ford F150 XLT Lariat, shows 44356 Miles, Mastercraft LT235/75R15 Tires, Manual Shift, Fuel Tank, Spare & Bumper, Plow Blade Included, New Battery 09-24, Running/Driving Condition, Stored Inside, VIN# IFTEF14Y1KLB43681, Indiana Title & Bill of Sale
• Bush Hog 3210 Rotary Cutter/Mower, Pull Type, 10', Chain Shielding, 540 PTO, S/N 12-03294, Stored Inside • Tuffy 3 Pt. 6' Grader Box • Tuffy 3 Pt. 6' Rake • Fimco 3 Pt 50 Gallon Boom Sprayer • Pull Type Gear Drive Manure Spreader, 6' x 3', Dual Beater Bar, Stored Inside • 3 Pt. 2 Bottom Plow

Online Only
AUCTION
PERSONAL PROPERTY



PAYMENT: Payments may be made Online in the forms of Credit Card (3.0% CC Surcharge): **Friday, June 19th & Saturday, June 20th** Or by Calling our Main Office: 260-244-7606 during Business Hours: Friday, June 19th • 8am-5pm & Saturday, June 20th • 8am-12 Noon EST (Office Closes at Noon, Eastern Time)
ONSITE PAYMENTS: **Saturday, June 20th • 9am-1pm**, Cash, Check or Credit Card (3.0% CC Surcharge) • **ALL Payments to be made by Saturday, June 20th • 1PM! • NO EXCEPTIONS!!** • 10% Buyer's Premium Applies
LOAD OUT: 1 Day Load Out!! **Saturday, June 20th • 9am-1pm**
NOTE: Bring Help - Loader Tractor Reserved & Available for 3 Pt. Equipment • 9am-11am Only!! Plan accordingly! Staff is Limited/Come Prepared/Auction Company Does Not provide Boxes, Packing, Hand Trucks or provide Staff for Loading. Staff Will Not Be Responsible for Loading Buyers Items. Come Prepared!
FIREARMS: All Firearms (Excluding Black Powder/BB/Pellet) will be handled by: Auburn Arms, 401 West Auburn Dr, Auburn, IN 46706 • (260) 413-6148. \$25 Transfer Fee (Per Gun) Applies - Paid to Auburn Arms at Time of Pickup. Call/Check Website for Current Hrs. **You Must Have Your Paid Receipt When Picking Up Firearms! NO EXCEPTIONS!**
SHIPPING: Shipping is available through 3rd Party Shipper, Columbia City Goin Postal, 1080 Spartan Drive Suite A, Columbia City, IN, 46725. 260-248-8608 Call for Quote Prior to Bidding. **ALL Shipping & Handling costs are the responsibility of the Buyer & Goin Postal, Not the Auction Company.**