

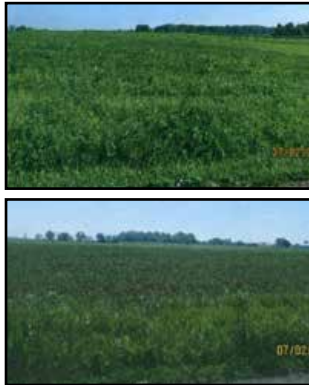
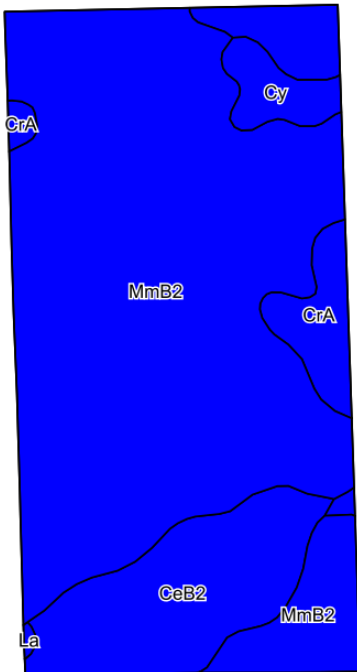
FOR SALE

81.5± acres

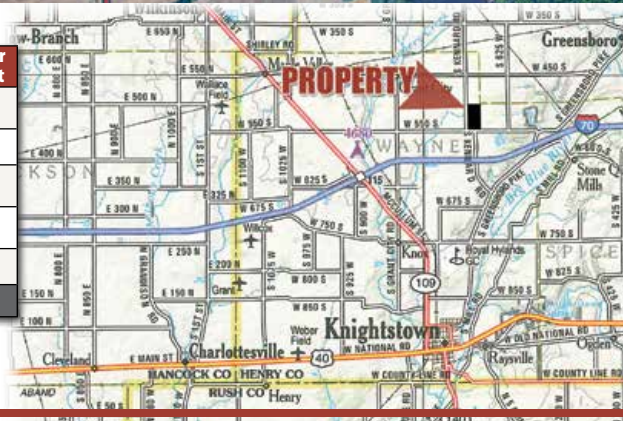
■ \$16,500/Acre ■

FEATURES:

- **Location:** 4 miles north of Knightstown IN.
From I-70 and Hwy 109 north on Hwy 109 to Co Rd 550 S then east 2 1/2 miles at Co Rd 550 S and Kennard Rd.
- **79.54± crop acres.** Soybeans now
- **1/2 mile North of I-70**
- **1/2 mile frontage on Kennard Rd and 1/4 mile on Co Rd 550 S**
- **Taxes \$33.49/acre or \$2730/yr**
- **County Drainage \$63.06/yr**
- **Possession at closing subject to 2026 crop rights.**



Code	Soils	Acres	% of Field	Corn	Beans	Winter Wheat
MmB2	Miamian silt loam, New Castle Till Plain, 2-6% slopes	60.64	74.4	127	45	57
CeB2	Celina silt loam, 2-6% slopes	11.94	14.6	125	40	52
CrA	Crosby silt loam, New Castle Till Plain, 0-2% slopes	6.48	7.9	142	52	55
Cy	Cyclone silty clay loam, 0-2% slopes	2.42	3.0	185	65	75
La	Landes loam, rarely flooded	0.12	0.1	115	37	58
Weighted Average				129.6	45.5	56.6



The information on this sheet is subject to verification and no liability for errors or omissions is assumed by the Schrader Agency. LOCKER - SS66H